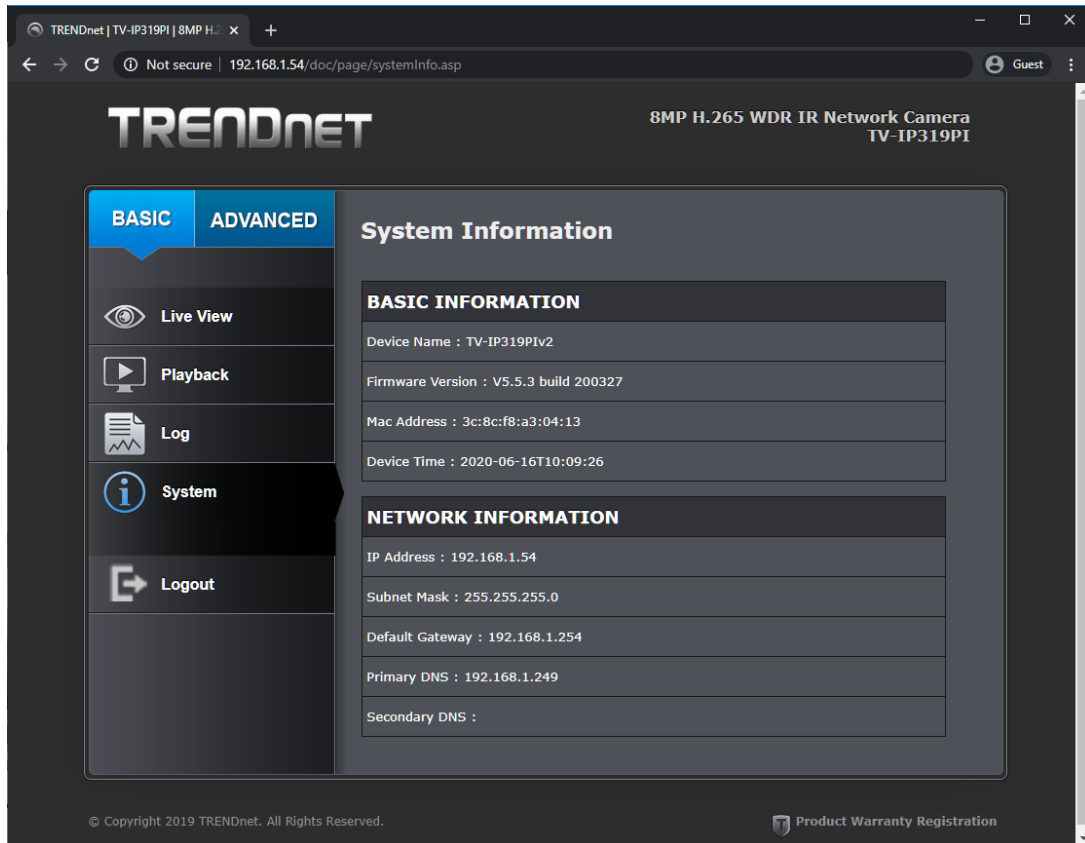


Mira Instructions for legacy cameras

1. Visit <http://www.trendnet.com/mira> for compatible cameras, hardware versions, latest firmware, app and software.
2. Please make sure the cameras have the Mira compatible firmware loaded. Firmware information can be found under Basic / System information section.



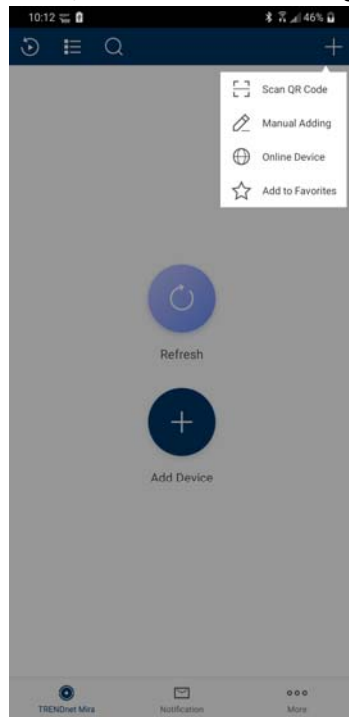
The screenshot displays the web interface for a Trendnet camera. The browser address bar shows the URL `192.168.1.54/doc/page/systemInfo.asp`. The page title is "8MP H.265 WDR IR Network Camera TV-IP319PI". The interface is divided into a left sidebar and a main content area. The sidebar has two tabs: "BASIC" (selected) and "ADVANCED". Under the "BASIC" tab, there are five menu items: "Live View", "Playback", "Log", "System" (highlighted), and "Logout". The main content area is titled "System Information" and contains two sections: "BASIC INFORMATION" and "NETWORK INFORMATION".

BASIC INFORMATION	
Device Name :	TV-IP319PIv2
Firmware Version :	V5.5.3 build 200327
Mac Address :	3c:8c:f8:a3:04:13
Device Time :	2020-06-16T10:09:26

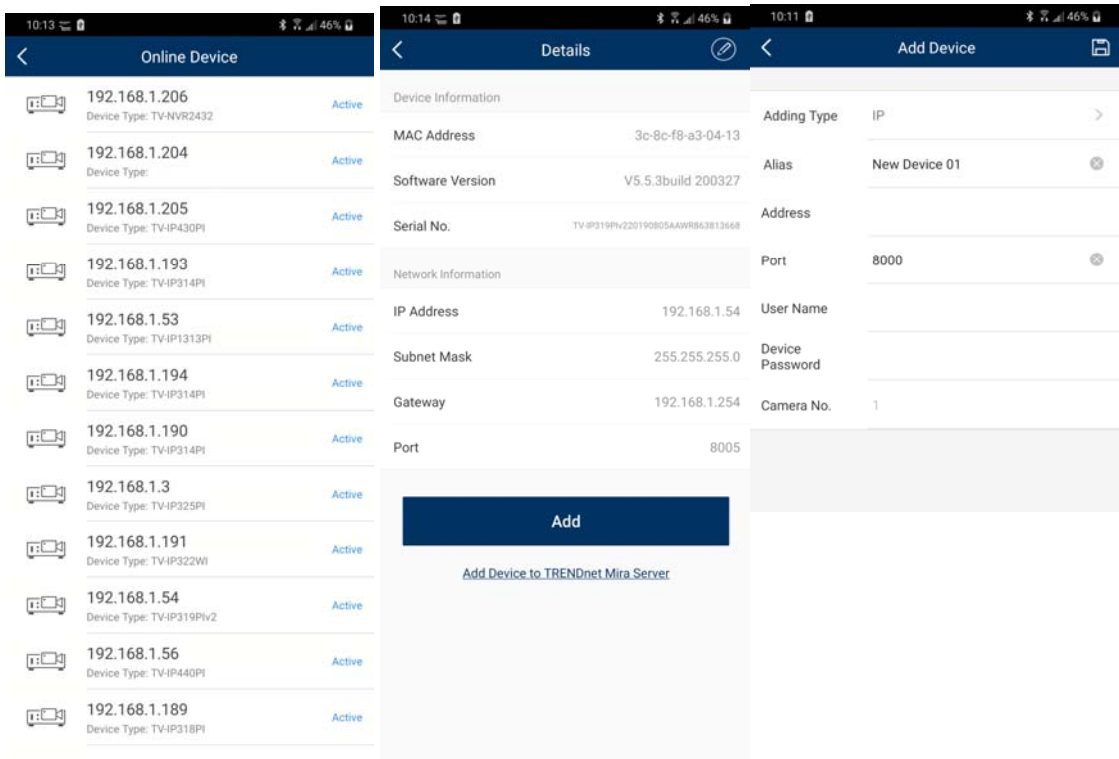
NETWORK INFORMATION	
IP Address :	192.168.1.54
Subnet Mask :	255.255.255.0
Default Gateway :	192.168.1.254
Primary DNS :	192.168.1.249
Secondary DNS :	

© Copyright 2019 TRENDnet. All Rights Reserved. Product Warranty Registration

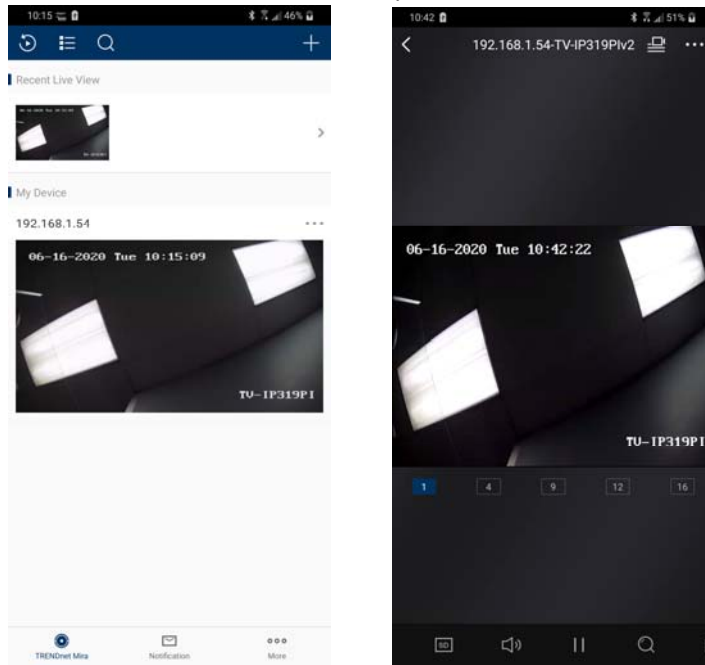
- Open Mira app on your phone, click on the + sign and select Online Device to find the camera that you would like to add, this is for local viewing only.



- Find the camera and tap on it from the list. Click on the Add button in the next screen, fill in the information and tap the disk icon to save.



5. Camera is added to the main window, tap the screen to access the live view.



6. For accessing the camera remotely, please setup the camera/router first with port forwarding/DDNS settings. Then use the Manual Adding option in the app to add the camera. Please refer to camera and router's user manuals for detail instructions.