





Quick Installation Guide  

TPL-304E
TPL-304E2K
1.01

Table of Contents

English	1
1. Before You Start	1
2. How to Install	2
3. Using the Utility	4
.....	
Troubleshooting	7



Package Contents

- TPL-304E / TPL-304E2K
- CD-ROM (Utility and User's Guide)
- Multi-Language Quick Installation Guide
- Cat.5 Ethernet Cable (1.8m/6ft.)

System Requirements

- CD-ROM Drive
- A desktop or laptop PC with a network adapter installed
- Existing 10/100Mbps wired network when TPL-304E is used as a bridge device

Software Requirements

Supported Operating Systems	CPU	Memory
Windows 7 (32/64-bit)	1GHz or above	1GB RAM or above
Windows Vista (32/64-bit)	800MHz or above	512MB RAM or above
Windows XP (32/64-bit)/2000	300MHz or above	256MB RAM or above

2. How to Install

Note:

1. DO NOT install the TPL-304E until instructed to do so.
2. DO NOT plug the TPL-304E into a surge protector.
3. Avoid connecting the TPL-304E into an outlet that has appliances (e.g. refrigerators, washer and dryer machines) plugged in.
4. In order for the TPL-304E to see each other, each unit must be on the same circuit breaker box.
5. A maximum of 8 TPL-304E can be networked.

1. Plug a TPL-304E into an available power outlet.

2. Connect an Ethernet cable from the TPL-304E to an available LAN port on your router (e.g. TEW-673GRU).

3. Then connect an Ethernet cable from an available LAN port on your router to your computer.

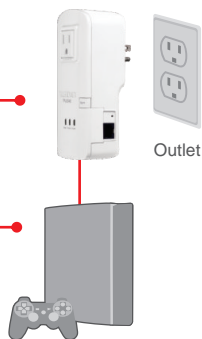
4. Plug a second TPL-304E into an outlet where your remote PC or network appliance is located.



Note:

Remote TPL-304E refers to the TPL-304E that is connected to your remote PC or network appliance.

5. Connect a CAT 5 cable from the TPL-304E into your remote PC or network appliance.



6. Verify that the Power, P-Link (blinking), and E-Link (blinking) LEDs are lit green on all TPL-304Es.

Your installation is now complete

For detailed information regarding the TPL-304E/TPL-304E2K configuration and advanced settings, please refer to the Troubleshooting section, User's Guide on the Utility CD-ROM, or TRENDnet's website at <http://www.trendnet.com>.

Register Your Product

To ensure the highest level of customer service and support, please take a moment to register your product Online at: www.trendnet.com/register

Thank you for choosing TRENDnet

For Windows Users

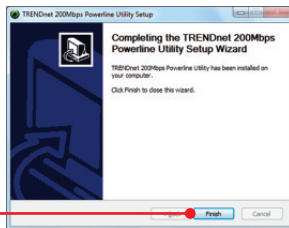
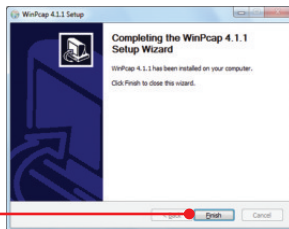
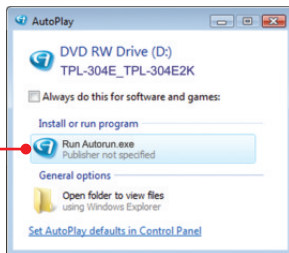
1. Insert the Utility CD-ROM into your computer's CD-ROM Drive .

2. Click Autorun.exe (Windows 7 / Vista).

3. Click Install Utility.

4. Follow the WinPCap Setup Wizard instructions and then click Finish.

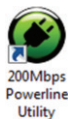
5. Follow the 200Mbps Powerline Utility instructions and then click Finish.



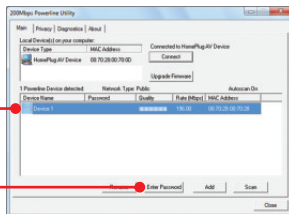
6. Copy down the 16 digit device password for each TPL-304E.



7. Double-click the 200Mbps Powerline Utility icon on your desktop.



8. Select the remote TPL-304E and click Enter Password.

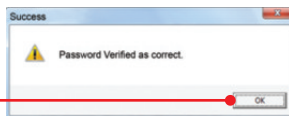


Note: Remote TPL-304E refers to the TPL-304E that is connected to your remote PC or network appliance.

9. Enter the remote TPL-304E's 16-digit password and click OK. See step 6 to find the remote TPL-304E's password.



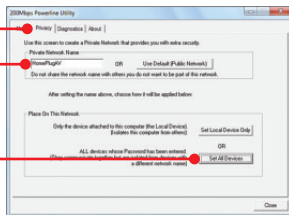
10. Click OK.



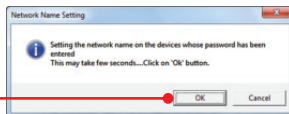
- Repeat steps 8-10 for additional remote TPL-304E's.

Note: The default network name is HomePlugAV. If the network name of your existing Powerline network is NOT HomePlugAV, you must change this in the utility.

- Click the Privacy tab. If you would like to change the Private Network Name, enter the desired Private Network Name, then click Set All Devices.



- Click OK.



Your configuration is now complete

Troubleshooting

1. I inserted the TPL-304E CD-ROM into my computer's CD-ROM Drive and the installation menu does not appear automatically. What should I do?

1. For Windows 7, if the installation menu does not appear automatically, click on the Windows icon on the bottom left hand corner of the screen, click the "Search programs and files" box, and type D:\Autorun.exe, where "D" in "D:\Autorun.exe" is the letter assigned to your CD-ROM Drive, and then press the ENTER key on your keyboard.
2. For Windows Vista, if the installation menu does not appear automatically, click Start, click the Start Search box, and type D:\Autorun.exe where "D" in "D:\Autorun.exe" is the letter assigned to your CD-ROM Drive, and then press the ENTER key on your keyboard.
3. For Windows XP/2000, if the installation menu does not appear automatically, click Start, click Run, and type D:\Autorun where "D" in "D:\Autorun.exe" is the letter assigned to your CD-ROM Drive, and then press the ENTER key on your keyboard.

2. I have verified that my Powerline device is connected to my workstation, but I cannot detect other Powerline devices. What should I do?

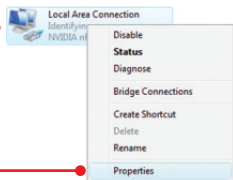
1. Verify that you are using Cat 5e or Cat. 6 Ethernet cables.
2. Press the Sync button on your TPL-304E's for 3 seconds then let go.
3. Open up the 200Mbps Powerline Utility and click scan.
4. Verify the network name of your Powerline network. Then go to the Privacy tab in the 200Mbps Powerline Utility, type in the network name and click Set Local Device Only.
5. Verify that the power outlet the TPL-304E is plugged into is on the same electrical power distribution and/or circuit breaker box.
6. Reset your TPL-304Es. Take a pin or paperclip and press the reset button for 15 seconds. The reset button is located on the side of the TPL-304E.

3. I can detect my Powerline devices on my Powerline network, but I cannot connect to the Internet. What should I do?

1. Make sure you are not connected the device into a surge protector.
2. Make sure that your Router is connected to the Internet.
3. Make sure your TCP/IP settings are set to Obtain an IP address automatically (see the steps below).

Windows 7

1. Go into the Control Panel, click Network and Internet, click Network and Sharing Center, click Change Adapter Settings and then right-click the Local Area Connection icon and then click Properties.



Obtain an IP address automatically

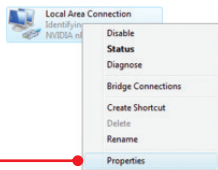
Use the following IP address:

IP address:	<input type="text"/>
Subnet mask:	<input type="text"/>
Default gateway:	<input type="text"/>

2. Click Internet Protocol Version 4(TCP/IPv4) and then click Properties. Then click on Obtain an IP address automatically.

Windows Vista

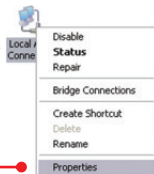
1. Go into the Control Panel, click Network and Internet, click Network and Sharing Center, click Manage Network Connections and then right-click the Local Area Connection icon and then click Properties.



2. Click Internet Protocol Version 4(TCP/IPv4) and then click Properties. Then click on Obtain an IP address automatically.

Windows XP/2000

1. Go into the Control Panel, double-click the Network Connections icon and then right-click the Local Area Connection icon and then click Properties.



2. Click Internet Protocol (TCP/IP) and then click Properties. Then click on Obtain an IP address automatically.

4. I tried changing the Private Network Name and applying it to all of my TPL-304E devices, but "Some devices could not be added to your network" error appears. I can no longer see any of the remote TPL-304Es. What should I do?

1. Open up the TRENDnet Powerline Utility, click the Privacy tab, click Use Default (Public Network) and then click Set Local Device Only.
2. Make sure to add each remote TPL-304E's password. See step 12 in Section 2 (How to Install).

5. I have a HomePlug 1.0 or HomePlug Turbo network. Can I use this with my network?
The TPL-304E is not backwards compatible with HomePlug 1.0 or HomePlug Turbo.

6. Do I need to reconfigure my TPL-304E after I hit the reset button.
The TPL-304E will automatically connect with each other once both units are reset to default settings.

If you still encounter problems or have any questions regarding the TPL-304E/TPL-304E2K, please refer to the User's Guide included on the Utility CD-ROM or contact TRENDnet's Technical Support Department.

Declaration of Conformity



Company Information:

Company Name:

TRENDnet, Inc.

Company Address:

20675 Manhattan Place

Torrance, CA 90501

USA

Product Information:

Product Description:

200MbpsPowerline AV Adapter with Bonus Plug

Model Number:

TPL-304E

Brand name:

TRENDnet



Technical Standards:

EN 55022 : 2006 + A1 : 2007

CISPR/1/XX /CDV Opt B

EN 55024 : 1998 + A1 : 2001 + A2 : 2003

EN 61000-3-2 : 2006

EN 61000-3-3 : 2008

EN 50412-2-1 : 2005

Declaration:

The product is herewith confirmed to comply with the requirements of Directive 1999/5/EC of the Council (European Parliament) on the radio and telecommunications terminal equipment.

I hereby declare that the products and devices mentioned above are consistent with the standards and provisions of the guidelines.

Sonny Su

Full Name

August 16, 2010

Date

Director of Technology

Position / Title

Signature

Certifications

This equipment has been tested and found to comply with FCC and CE Rules.

Operation is subject to the following two conditions:

- (1) This device may not cause harmful interference.
- (2) This device must accept any interference received. Including interference that may cause undesired operation.



Waste electrical and electronic products must not be disposed of with household waste. Please recycle where facilities exist. Check with you Local Authority or Retailer for recycling advice.



NOTE: THE MANUFACTURER IS NOT RESPONSIBLE FOR ANY RADIO OR TV INTERFERENCE CAUSED BY UNAUTHORIZED MODIFICATIONS TO THIS EQUIPMENT. SUCH MODIFICATIONS COULD VOID THE USER'S AUTHORITY TO OPERATE THE EQUIPMENT.

ADVERTENCIA

En todos nuestros equipos se mencionan claramente las características del adaptador de alimentación necesario para su funcionamiento. El uso de un adaptador distinto al mencionado puede producir daños físicos y/o daños al equipo conectado. El adaptador de alimentación debe operar con voltaje y frecuencia de la energía eléctrica domiciliar existente en el país o zona de instalación.



TRENDnet[®]

Product Warranty Registration

Please take a moment to register your product online.
Go to TRENDnet's website at <http://www.trendnet.com/register>