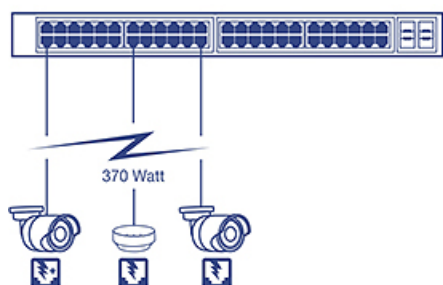


48-Port Gigabit PoE+ Managed Layer 2 Switch with 4 shared SFP slots

TL2-PG484 (v1.0R)

- Command Line interface management supported
- SNMP (v1, v2c, v3), 802.1X, RSTP, and MSTP support
- Supports Port Trunking, Mirroring, IGMP, Static and Dynamic VLAN, and RMON
- Private / Voice VLAN, QoS, and bandwidth controls
- 24 x Gigabit PoE+ ports
- 24 x Gigabit ports
- 4 x shared SFP slots and a console port
- 96 Gbps switching capacity
- Smart fans reduce energy consumption

TRENDnet's 48-Port Gigabit PoE+ Managed Layer 2 Switch with 4 shared SFP slots, model TL2-PG484, has 24 x Gigabit PoE+ ports, 24 x Gigabit ports, and 4 x shared SFP slots, a console port, a PoE Power budget of 370 Watts, and an advanced Layer 2 management feature set. This IPv6 ready switch offers traffic management, troubleshooting, access control, and monitoring features.



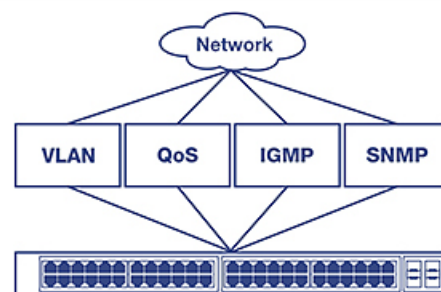
Power over Ethernet

The 370 W PoE power budget supplies PoE+ (up to 30 W) to ports 1-24 along with PD (powered device) auto classification and over current/short circuit protection.



Smart Fans

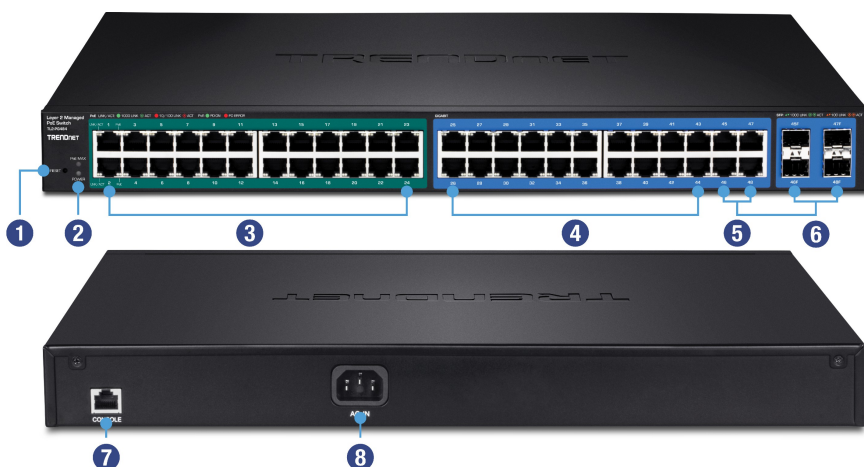
Smart fans save energy and reduce operating noise by varying fan speed and usage based on real-time cooling needs.



Integration Flexibility

Managed features include access control lists, VLAN, IGMP snooping, QoS, RMON, SNMP trap and syslog for monitoring and flexible network integration.

Networking Solution



- 1 Reset button
- 2 LED indicators
- 3 Gigabit PoE+ ports
- 4 Gigabit ports
- 5 Gigabit ports (shared)
- 6 SFP slots (shared)
- 7 Console port
- 8 Power port



Hardware Design

Provides 24 x Gigabit PoE+ ports, 24 x Gigabit ports, 4 x shared SFP slots, a console port, and includes rackmount brackets.



Smart Fan

Smart fan saves energy by varying fan speed and use based on cooling needs



IPv6 Ready

This switch supports IPv6 configuration and IPv6 neighbor discovery.



Traffic Management

A broad range of network configurations are supported by: 802.3ad link aggregation, Asymmetric VLAN, 802.1Q VLAN, Voice VLAN, Private VLAN, Bandwidth Controls, GVRP, IGMP v1-v3, 802.1p Class of Service (CoS), Spanning Tree (STP, RSTP, and MSTP), and QoS queue scheduling.



Troubleshooting

Real time traffic comparison charts, error group charts, and a convenient cable diagnostic test aid in rapid troubleshooting.



Access Controls

Features such as ACL, SSL, MAC / port filtering, Denial of Service controls, 802.1X, TACACS+, and RADIUS are compatible with layered network access controls.



Monitoring

RMON, SNMP, SNMP Trap, and Port Mirroring support administrator monitoring solutions.

Specifications

Standards

- IEEE 802.1d
- IEEE 802.1p
- IEEE 802.1Q
- IEEE 802.1s
- IEEE 802.1w
- IEEE 802.1X
- IEEE 802.1ab
- IEEE 802.3
- IEEE 802.3u
- IEEE 802.3x
- IEEE 802.3z
- IEEE 802.3ab
- IEEE 802.3ad
- IEEE 802.3af (15.4 Watts / port)
- IEEE 802.3at (30 Watts / port)
- IEEE 802.3az

Device Interface

- 24 x Gigabit PoE+ ports
- 24 x Gigabit ports
- 4 x shared Gigabit SFP slots
- 1 x RJ-45 console port
- LED indicators
- Reset button

Data Transfer Rate

- Ethernet: 10 Mbps (half duplex), 20 Mbps (full duplex)
- Fast Ethernet: 100 Mbps (half duplex), 200 Mbps (full duplex)
- Gigabit Ethernet: 2000 Mbps (full duplex)

Performance

- Switch fabric: 96 Gbps
- RAM buffer: 1 MB
- MAC Address Table: 16K entries
- Jumbo Frames: 10 KB
- HOL Blocking Prevention
- Forwarding rate: 71.4 Mpps (64-byte packet size)

Management

- CLI (Console / Telnet / SSHv2)
- HTTP / HTTPS (SSL v2 / 3 TLS) Web based GUI
- SNMP v1, v2c, v3
- RMON v1
- Static Unicast MAC Address
- Enable / disable 802.3az Power Saving
- LLDP
- Virtual Cable Test
- IPv6: IPv6 Neighbor Discovery, IPv6 Static IP, DHCPv6, Auto configuration

MIB

- MIB II RFC 1213
- Bridge MIB RFC 1493
- Bridge MIB Extension RFC 2674
- SNMPv2 MIB RFC 1907

- Ethernet Interface MIB RFC 1643
- Ethernet-like MIB RFC 2863
- Interface Group MIB RFC 2233
- MIB Traps Convention RFC 1215
- RMON MIB RFC 1757, RFC 2819
- 802.1p MIB RFC 2674
- RADIUS Client Authentication MIB RFC 2618
- LLDP-MIB IEEE 802.1ab
- Ping MIB RFC 2925, RFC 4560

Spanning Tree

- IEEE 802.1D STP (Spanning Tree protocol)
- IEEE 802.1w RSTP (Rapid Spanning Tree protocol)
- IEEE 802.1s MSTP (Multiple Spanning Tree protocol)

Link Aggregation

- Static Link Aggregation
- 802.3ad Dynamic LACP

Quality of Service (QoS)

- 802.1p Class of Service (CoS)
- DSCP (Differentiated Services Code Point)
- Bandwidth Control per port
- Queue Scheduling: Strict Priority, Weighted Round Robin (WRR)

VLAN

- Multiple management VLAN assignment
- Asymmetric VLAN
- 802.1Q Tagged VLAN
- Dynamic GVRP
- Up to 256 VLAN groups, ID Range 1-4094
- Private VLAN (Protected Ports)
- Voice VLAN (10 user defined OUIs)

Multicast

- IGMP Snooping v1, v2, v3
- Static Multicast Address
- Up to 256 multicast entries
- MLD Snooping v1, v2

Port Mirror

- RX, TX, or Both
- One to one
- Many to one

Access Control

- 802.1X Port-Based Network Access Control, RADIUS, TACACS+
- Local Dial In User Authentication
- DHCP Snooping
- Loopback Detection
- Duplicated Address Detection
- Trusted Host
- Denial of Service (DoS)

ACL IPv4 L2-L4 & IPv6

- MAC Address

- VLAN ID
- Ether Type (IPv4 only)
- IP Protocol 0-255
- TCP / UDP Port 1-65535
- 802.1p
- DSCP (IPv4 only)
- IPv6 Address (IPv6 only)

Management Utility

- Windows® 10, 8.1, 8, 7, Vista, XP, Windows® 2003 / 2008 Server

Special Features

- PoE+ ports

Power

- Input: 100 – 240 V AC, 50/60 Hz, internal power supply
- Consumption: 425.6 W (max.)

PoE

- PoE budget: 370 W
- 802.3at: Up to 30 W per port (ports 1-24)
- Mode A: Pins 1,2 for power(+) and pins 3,6 for power(-)
- PD auto classification
- Over current / short circuit protection

Smart Fan / Acoustics

- Quantity: 4
- Noise Level: 56 dB(A) (max.)

MTBF

- 318,350 hours

Operating Temperature

- 0 – 45°C (32 – 113°F)

Operating Humidity

- Max. 90% non-condensing

Dimensions

- 440 x 430 x 44.45 mm (17.3 x 16.93 x 1.75 in.)
- Rack mountable 1U height

Weight

- 6.61 kg (14.57 lbs.)

Certifications

- CE
- FCC
- UL

Warranty

- 3 year limited

Package Contents

- TL2-PG484
- Quick Installation Guide
- CD-ROM (Utility & User's Guide)
- Power cord (1.8 m / 6 ft.)
- RJ-45 to RS-232 console cable (205.74 cm / 6.75 feet)
- Rack mount kit

