

# TFU-H33PI

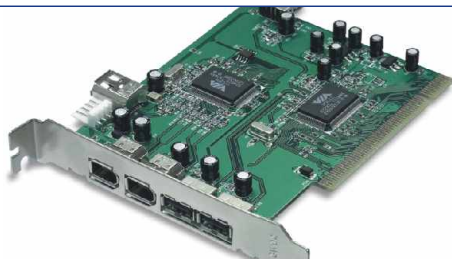
**USB 2.0/FireWire Combo PCI Adapter  
Quick Installation Guide**

**Guide d'installation rapide de  
l'ensemble USB 2.0/adaptateur PCI FireWire**

**Anleitung zur Schnellinstallation des  
USB-2.0/FireWire-Combo PCI-Adapters**

**Guía de instalación rápida de  
un adaptador PCI Combinado FireWire/USB 2.0**

**Version 09.24.04**



**TRENDnet**<sup>®</sup>  
TRENDware, USA  
**What's Next in Networking**

# Table of Contents

|                                   |    |
|-----------------------------------|----|
| English .....                     | 1  |
| 1. Prepare for Installation ..... | 1  |
| 2. Product Detail .....           | 2  |
| 3. Hardware Installation .....    | 3  |
| 4. Driver Installation .....      | 4  |
| 5. Verify Installation .....      | 13 |
| Troubleshooting .....             | 16 |

# English QIG

## 1. Prepare for Installation

Thank you for purchasing the TRENDnet TFU-H33PI USB 2.0/FireWire Combo PCI Adapter.

This guide will assist you to set up the TFU-H33PI 6-port USB 2.0/FireWire Combo PCI Adapter. Following the installation should be easy and trouble-free. If you experience any problems, please refer to the Troubleshooting section. If you need further technical assistance, please visit [www.TRENDNET.com](http://www.TRENDNET.com) or contact technical support by phone.

### Verify Package Contents

Please make sure you have everything in the box:

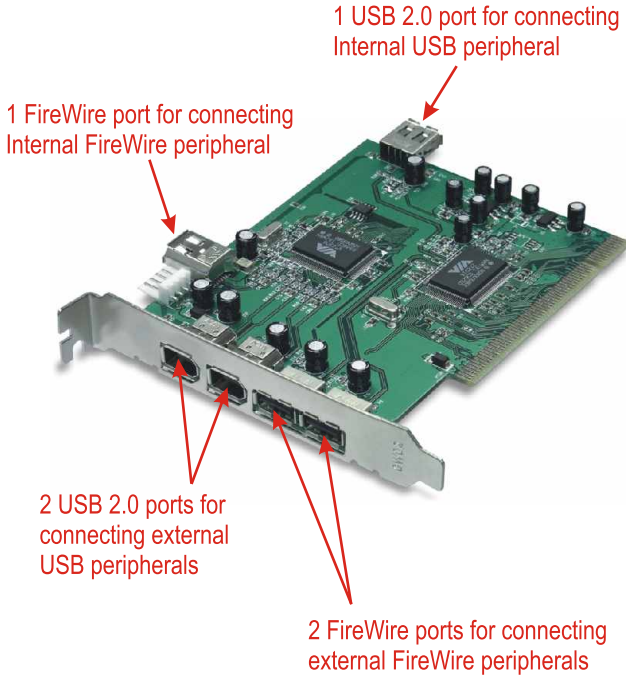


### Minimum System Requirements

1. Pentium 233Mhz or faster with at least 64MB RAM
2. Computer with an available 32-bit PCI slot
3. Microsoft Windows 98SE, ME, 2000 with Service Pack 4, or Windows XP with Service Pack 1 installed

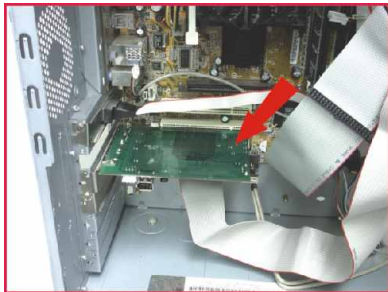
## 2. Product Detail

The TFU-H33PI high-speed USB 2.0/FireWire Combo PCI Adapter has 3 USB and 3 FireWire ports.



## 3. Hardware Installation

1. Shut down your computer and make sure the power is completely off.
2. Open your computer case to reveal the motherboard and expansion slots. (Please refer to your computer's user manual if you need help opening the case)
3. Insert the TFU-H33PI PCI card into one of free PCI slots. Press down firmly and evenly on the card until it snaps into place.



4. Close your computer case, and power up your system.
5. Please go to the specific section for the operating system installed on your system.

## 4. Driver Installation

### Windows 98SE/ME/2000/XP

If you are using Windows 2000, make sure that you have installed Service Pack 4. If you are using Windows XP, make sure that you have installed Service Pack 1. Then proceed to the instructions below.

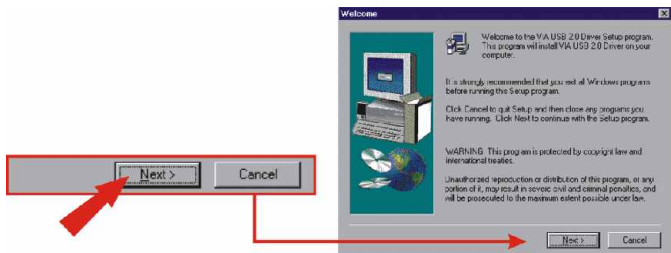
After your computer reboots, the “Found New Hardware” will appear.

**Note:** Click the cancel button on all Plug-and-Play messages displayed on the screen, and follow the procedure below.

1. Insert the TFU-H33PI Driver CD-ROM into your computer's CD-ROM drive.
2. Double-click the **“My Computer”** icon on your Windows desktop.
3. Double-click the **“CD ROM”** drive, and double click the **“VIAUSB2V258”** Folder.
4. Double-click the **“Setup.exe”** icon to install the drivers for windows.

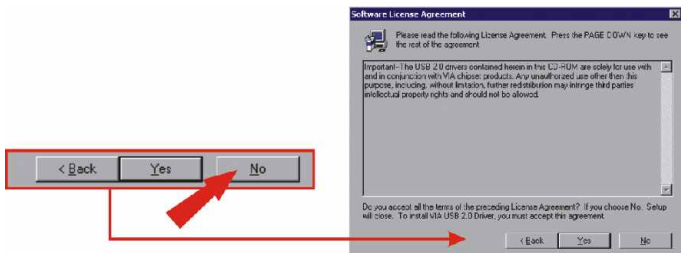


5. Click **Next**.

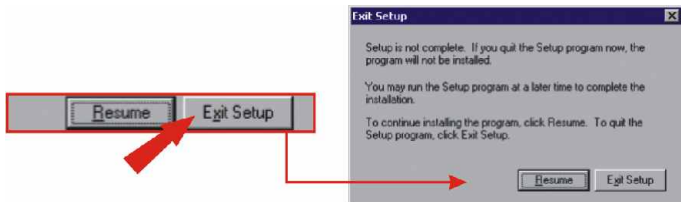


5a. If you did not install Service Pack 4 for Windows 2000, you will get this Window:

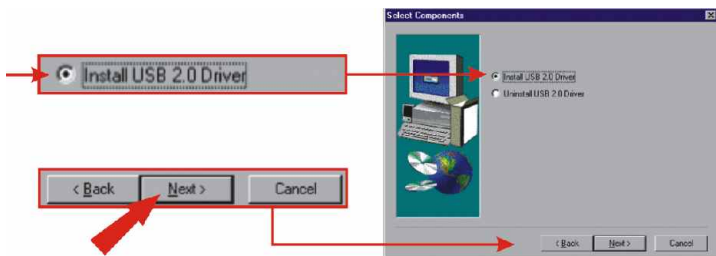
5b. Click **No**.



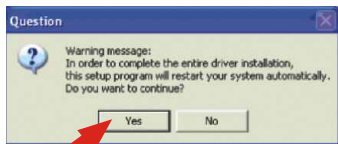
5c. Click **Exit Setup**. Install Service Pack 4 before installing the driver.



6. Make sure **Install USB 2.0 Driver** is selected, click **Next**.



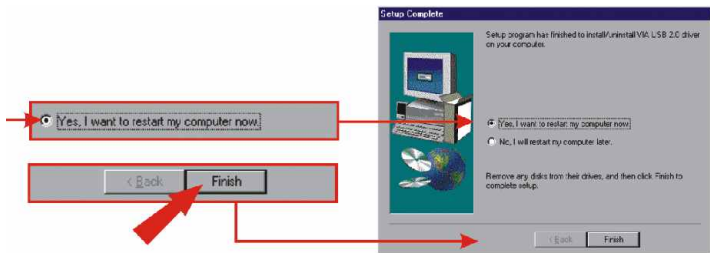
7. For Windows 2000/XP, click **Yes**.



THE DRIVER INSTALLATION FOR WINDOWS 2000/XP IS COMPLETE! PLEASE ALLOW YOUR COMPUTER TO REBOOT.

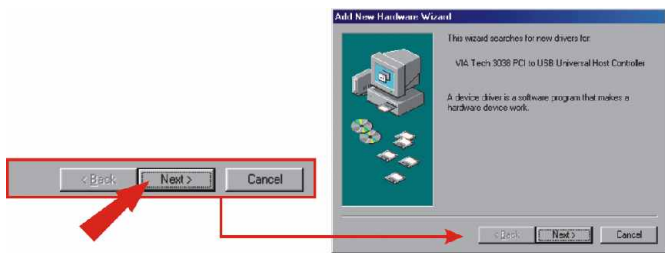
**Note:** If you would like to verify the TFU-H33PI has been installed properly for your windows, go to the Verify Installation section.

For Windows 98SE/Me, choose “**Yes, I want to restart my computer now**”, and click **Finish**, and continue with step 8 after your computer reboots.

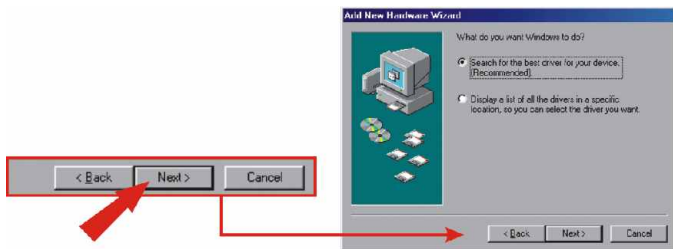




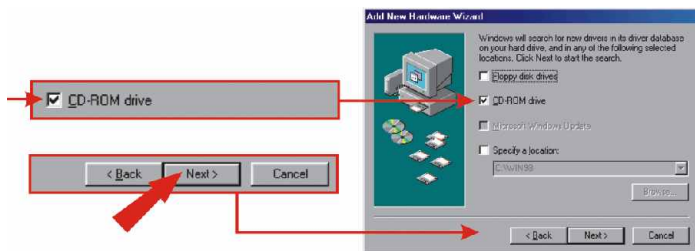
8. Click **Finish** to restart your system.
9. After your system reboots, the Add New Hardware Wizard message appears.
10. Click **Next**.



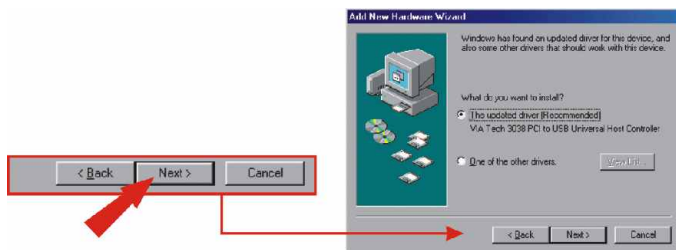
11. Click **Next**.



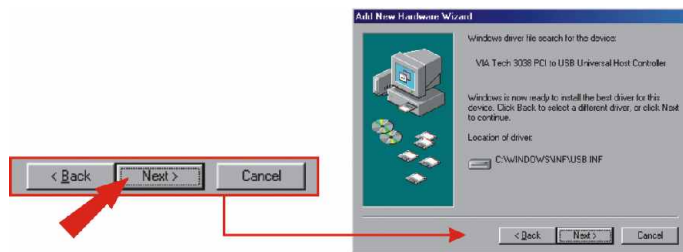
12. Make sure the **CD-ROM drive** box is checked, and click **Next**.



13. Click **Next**.



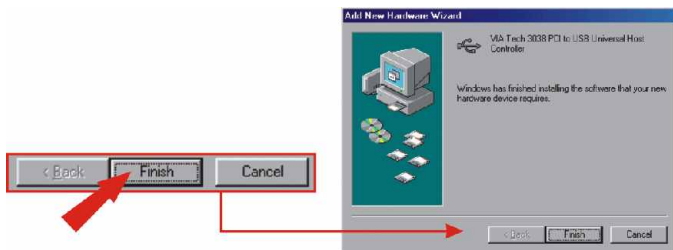
14. Click **Next**.



15. If your system asks for Windows 98SE/ME CD-ROM, please insert the CD into your computer's CD-ROM drive. Click **OK**.

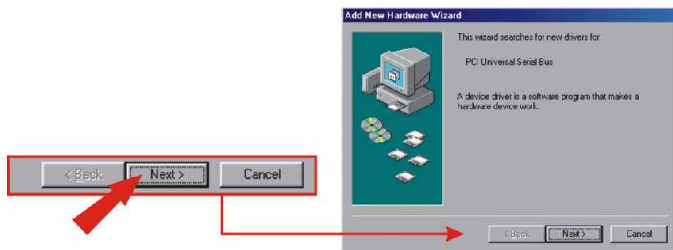


16. Click **Finish**.

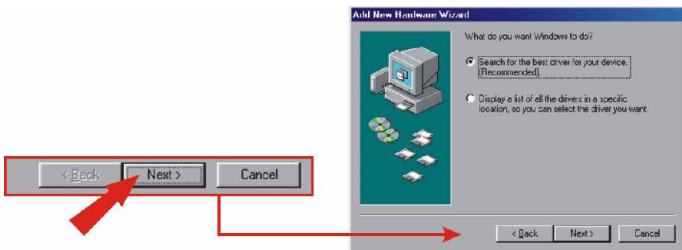


17. You will need to install another **VIA Tech 3038 PCI to USB Universal Host Controller**. Please repeat Steps 10-16.

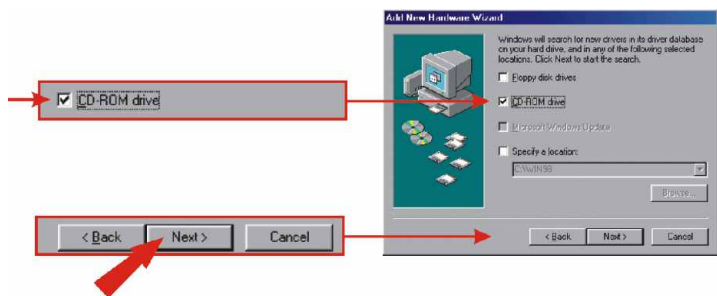
18. Click **Next**.



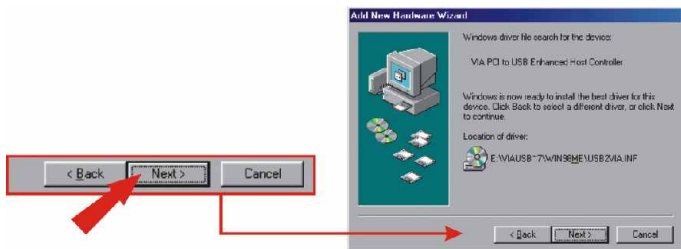
19. Click **Next**.



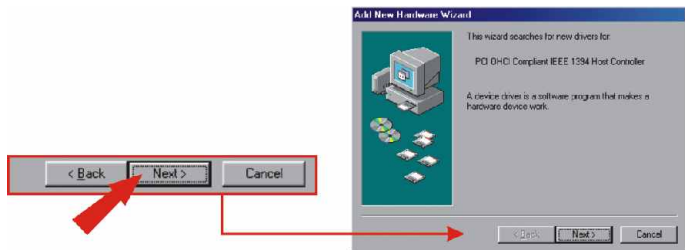
20. Make sure **CD-ROM drive** is selected, and click **Next**.



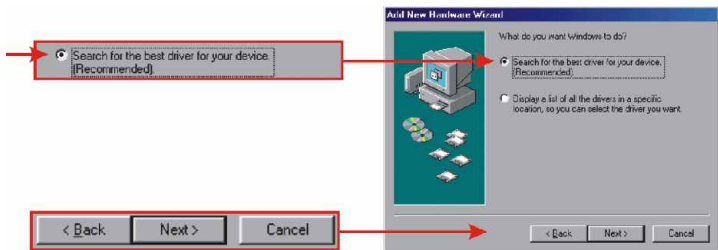
21. Click **Next**.



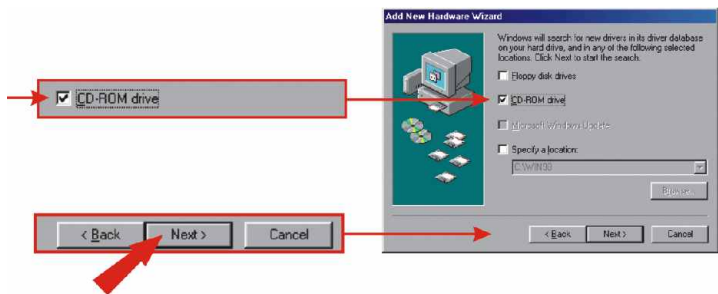
22. Click **Next**.



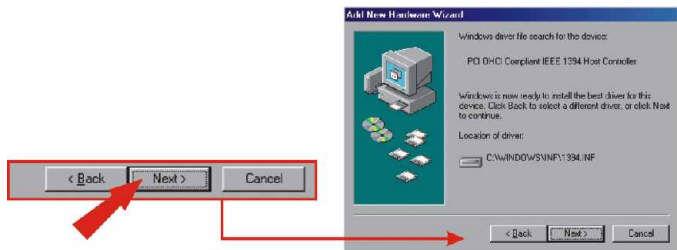
23. Make sure **Search for the best driver for your device (Recommended)** is selected, and click **Next**.



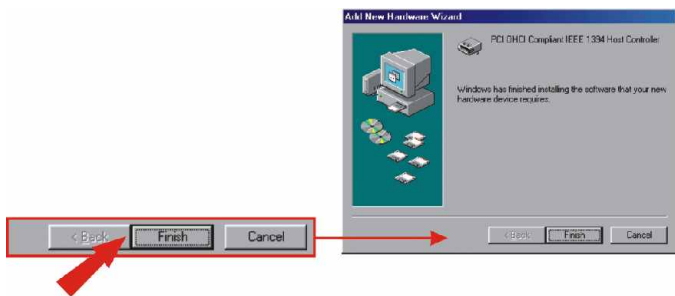
24. Make sure the **CD-ROM drive** box is checked, and click **Next**.



25. Click **Next**.



26. Click **Finish**.



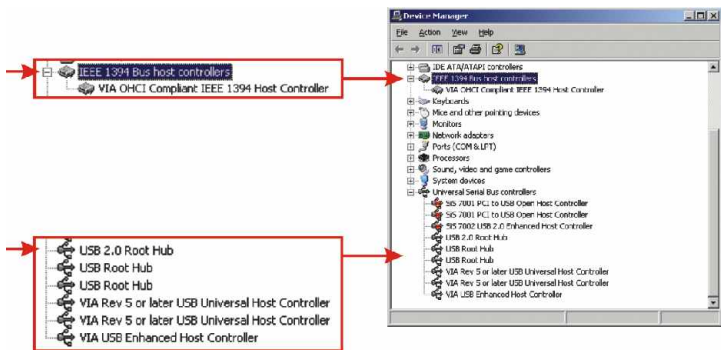
Congratulations!  
Installation is now complete.

**NOTE:** Restart your computer for the new setting to take effect. If you would like to verify the TFU-H33PI has been installed properly for your windows, go to the Verify Installation section.

# 5. Verify Installation

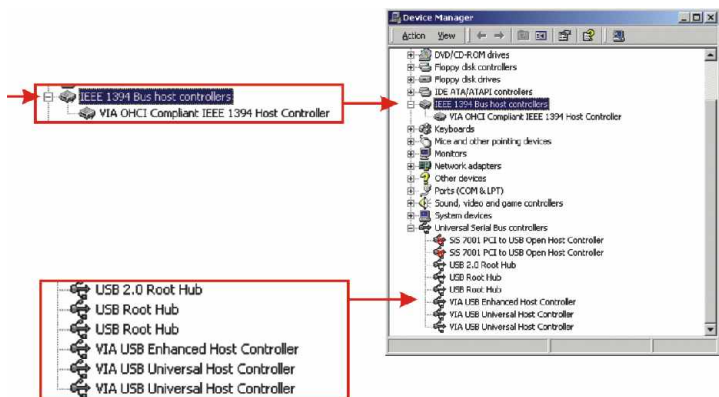
## Windows XP

1. Click **Start**, and then click **Control Panel**.
2. Double-click the **System** icon. On the **Hardware** tab, and click **Device Manager** button.
3. Expand the “**IEEE 1394 Bus host controllers**” heading to verify that the **VIA OHCI Compliant IEEE 1394 Host Controller** has been installed.
4. Expand the “**Universal Serial Bus controllers**” heading to verify that the **VIA USB Enhanced Host Controller, VIA Rev 5 or later USB Universal Host Controller** and **USB 2.0 Root Hub** have been installed.



## Windows 2000

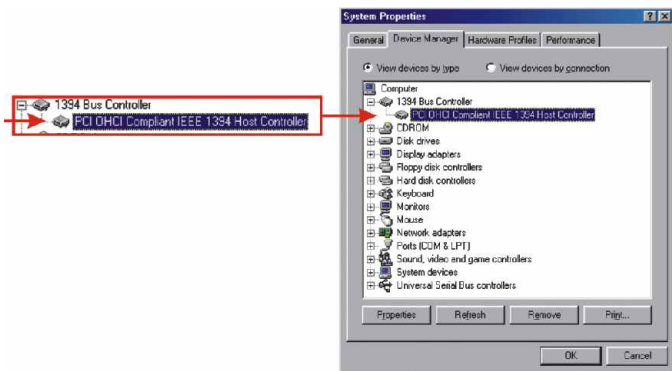
1. Click **Start**, and then click **Control Panel**.
2. Double-click the System icon. On the **Hardware** tab, click **Device Manager** button.
3. Expand the “**IEEE 1394 Bus host controllers**” heading to verify that the **VIA OHCI Compliant IEEE 1394 Host Controller** has been installed.
4. Expand the “**Universal Serial Bus controllers**” heading to verify that the **VIA USB Enhanced Host Controller**, **VIA USB Universal Host Controller** and **USB 2.0 Root Hub** have been installed.



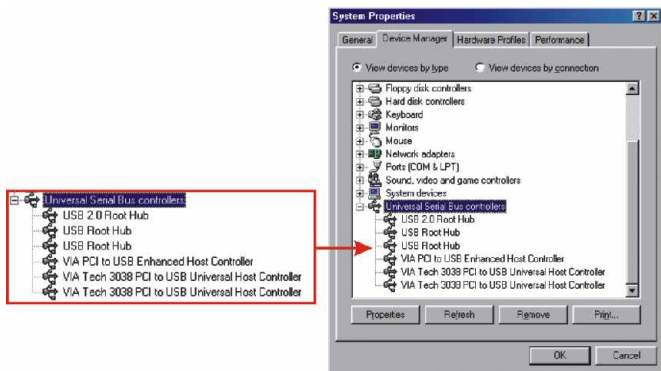


## Windows 98SE/ME

1. Click **Start**, select **Settings**, then click on **Control Panel**.
2. Double-click the **System** icon, and click **Device Manager** tab.
3. Expand the “**1394 Bus Controller**” heading to verify that the **PCI OHCI Compliant IEEE 1394 Host Controller** has been installed.



4. Expand the “**Universal Serial Bus controllers**” heading to verify that the **VIA PCI to USB Enhanced Host Controller** and **USB 2.0 Root Hub** have been installed.



# Troubleshooting

**Q1. Can I connect or disconnect USB or FireWire devices while the computer is on?**

**A1.** Yes, you can connect or disconnect any external USB or FireWire devices while the computer is on because the USB and FireWire interfaces are Plug-and-Play compliant and hot-pluggable.

**Q2. I have a USB 1.1 cable. Can it work with USB 2.0 devices?**

**A2.** Yes, it works but it may cause problems for connecting high-speed USB 2.0 external peripherals. It is recommended that you use a certified USB 2.0 cable for USB 2.0 devices.

**Q3. After successful installation of the TFU-H33PI USB 2.0/FireWire Combo PCI Card, I connect my external USB/FireWire device to the USB/FireWire port, but it doesn't seem to work. What should I do?**

**A3.** Most external USB/FireWire devices require their own power source. Make sure your USB/FireWire device is connected with an external AC power adapter and the device is powered on. If your USB/FireWire device requires a software driver, please make sure the driver is properly installed.

If you have any questions regarding the TFU-H33PI USB 2.0/FireWire Combo PCI Card, please contact Trendware Technical Support Department.

## Certifications

This equipment has been tested and found to comply with Part 15 of the FCC Rules. Operation is subject to the following two conditions:

- (1) This device may not cause harmful interference.
- (2) This device must accept any interference received.  
Including interference that may cause undesired operation.

This equipment is in compliance with the requirements of the following regulations: EN 55 022: CLASS B



## Contact Technical Support

Telephone: +1-310-626-6252  
Fax: +1-310-626-6267  
Website: [www.TRENDNET.com](http://www.TRENDNET.com)  
E-mail: [support@trendware.com](mailto:support@trendware.com)

## Technical Support Hours

7:00AM ~ 6:00PM, Monday through Friday  
Pacific Standard Time (except holidays)

# TRENDnet<sup>®</sup>

TRENDware, USA

**What's Next in Networking**

## Product Warranty Registration

Please take a moment to register your product online.  
Go to TRENDware's website at <http://www.TRENDNET.com>

**TRENDware International, Inc.**  
3135 Kashiwa Street  
Torrance, CA 90505

**<http://www.TRENDNET.com>**