

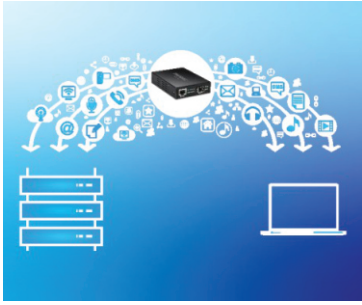


10GBASE-T to SFP+ Fiber Media Converter

TFC-10GSFP (v1.0R)

- 1 x 10G RJ-45 port
- 1 x 10G SFP+ Slot
- LFPT support (Link Fault Pass Through)
- SFP slot accommodates multimode or single-mode modules
- Auto-MDIX RJ-45 port supports full-duplex mode
- Functions as a standalone converter
- NDAA / TAA compliant (U.S. and Canada only)

TRENDnet's compact 10GBASE-T to SFP Fiber Media Converter, model TEG-10GSFP, converts a 10GBASE-T (Copper 10Gbps) ethernet connection to 10G BASE-SX/LX (Fiber) SFP media connection, and vice versa. The 10GBASE-T RJ-45 port on the 10G SFP+ transceiver supports a full-duplex 10G connection at wire speed. The SFP slot supports both multimode (SX) or single-mode (LX) SFP modules.



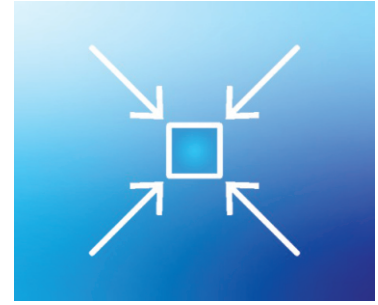
Multi-Gig Slot

The SFP and RJ-45 ports support 10G, 5G, and 1G speeds.



Power Adapter

A power adapter is included with the 10G SFP+ transceiver for standalone use.



Compact

Compact and lightweight metal housing design provides greater installation flexibility.

FEATURES



Multi-Gig Ethernet

1 x 10G/5G/2.5G/1G Ethernet port



Multi-Gig SFP

1 x 10G/5G/1G SFP+ slot



Fanless

Fanless design on the 10G SFP+ media converter lowers energy consumption and eliminates operating noise



Compact Design

Small, compact, and lightweight metal housing of the 10GbE SFP+ transceiver provides greater installation flexibility



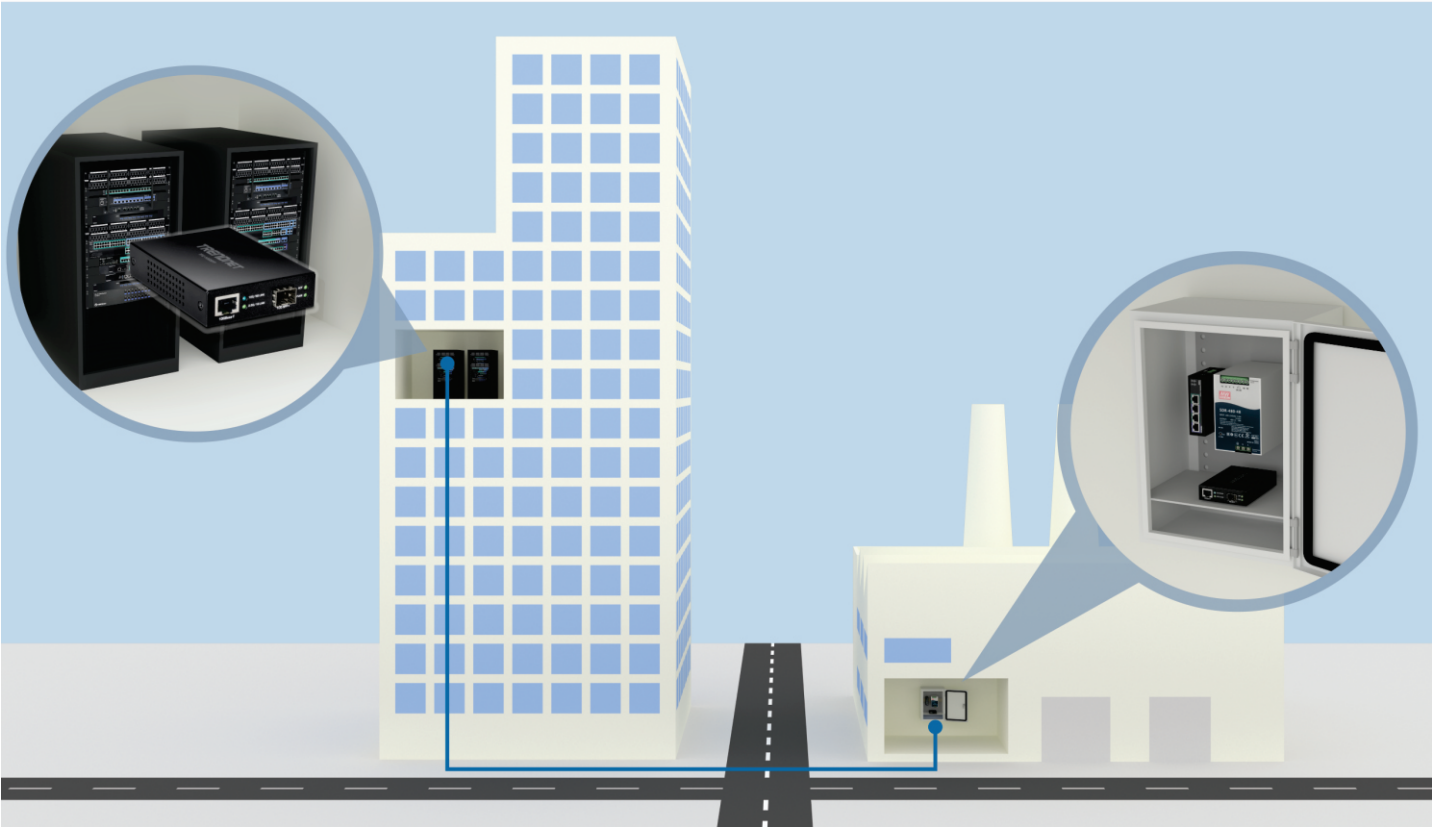
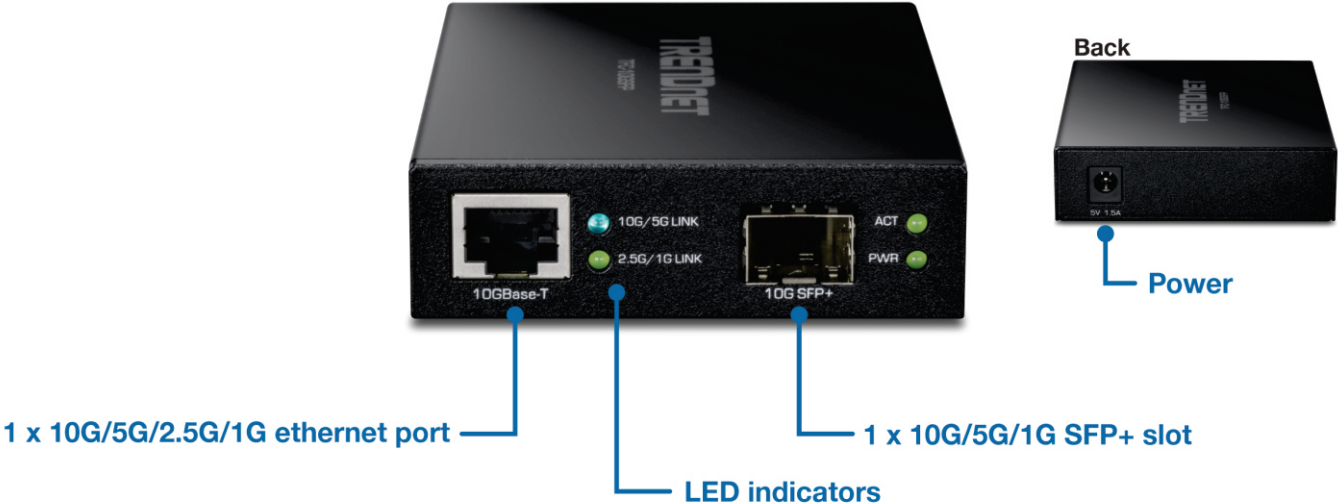
LED Indicators

LED indicators convey port status



Fiber Wavelength

The 10G SFP+ transceiver is compatible with multi-mode and single mode transmissions



SPECIFICATIONS

Standards

- IEEE 802.3
- IEEE 802.3u
- IEEE 802.3ab
- IEEE 802.3an
- IEEE 802.3bz
- IEEE 802.3z

Device Interface

- 1 x 10G/5G/2.5G/1G ethernet port
- 1 x 10G/5G/1G SFP+ slot
- LED indicators

Data Transfer Rate

- Gigabit: 2000Mbps (full duplex)
- 2.5G: 5000Mbps (full duplex)
- 5G: 10Gbps (full duplex)
- 10G: 20Gbps (full duplex)

Special Features

- Supports Link Fault Pass-Through (LFPT)
- SFP slot supports Multimode and Single mode Modules

Power

- Input: 110 – 240 V AC, 50/60 Hz 0.5A
- Output: 5V DC, 1.5A
- Max. consumption: 4W

Operating Temperature

- 0° C – 50° C (32° F – 122° F)

Operating Humidity

- Max. 90% non-condensing

Dimensions

- 105 x 75 x 22 mm (4.13 x 2.95 x 0.86 in.)

Weight

- 188 g (6.63 oz.)

Certifications

- CE
- FCC

Warranty

- 3 year

Package Contents

- TFC-10GSFP
- Quick Installation Guide
- Power Adapter (5V DC, 1.5A)

All references to speed are for comparison purposes only. Product specifications, size, and shape are subject to change without notice, and actual product appearance may differ from that depicted herein.