



Quick Installation Guide



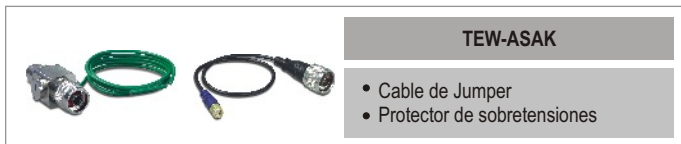
Indoor / Outdoor Antenna,
Antenna Cable & Surge Arrestor

Table of Contents

Español	1
1. Instalación de la antena exterior	1
2. Cómo instalar un protector de sobretensiones	4
3. Cinta adhesiva a prueba de agua para instalació exterior	5
4. Instalación de antena interior	6

1. Instalación de la antena exterior

Antes de la instalación, compruebe que tiene los productos requeridos y que el contenido de cada producto está completo.



Una de las siguientes antenas:

TEW-AO080	TEW-AO100	TEW-AO09D	TEW-AO14D	TEW-AO19D
				

1. Desconecte la antena dipolo por defecto de su punto de acceso interior o enrutador.



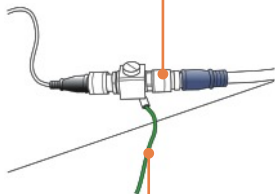
2. Conecte el manguito azul (SMA inverso) del cable de jumper a su dispositivo Wi-Fi.



3. Conecte el manguito negro (tipo N) del cable de jumper al protector de sobretensiones. *Por favor consulte la sección 2 "Cómo instalar un protector de sobretensiones"*



4. Conecte la parte restante del protector de sobretensiones al manguito azul (tipo N) del cable de antena. (TEW-L406/TEW-L412)



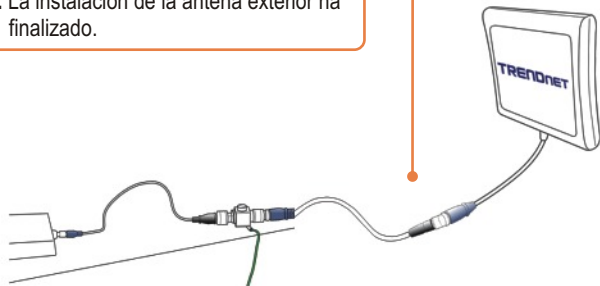
5. Conecte el cable verde al objeto de tierra.
1. Elemento conductor
2. Sistema eléctrico de puesta a tierra
3. Base de instalación



6. Conecte la parte restante del manguito negro (tipo N) del cable de antena a la antena.

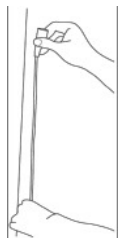


7. La instalación de la antena exterior ha finalizado.



2. Cómo instalar un protector de sobretensiones

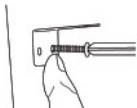
1. Antes de instalar la antena, compruebe que el cable exterior de pérdida baja (TEW-L406/TEW-L412) puede alcanzar la ubicación del punto de acceso o enrutador. Conecte el manguito azul del adaptador de cable incluido al dispositivo Wi-Fi (SMA inverso) y el manguito negro de los adaptadores de cable (tipo N) al protector de sobretensiones.



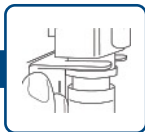
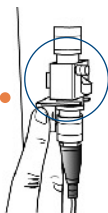
2. Tome el tornillo de metal tipo L y marque su lugar de fijación en la pared.



3. Fíjelo a la pared.



4. Coloque el protector dentro del soporte de sujeción.



Coloque la arandela



Enrosque la tuerca



3. Cinta adhesiva a prueba de agua para instalación exterior

Si su protector de sobretensiones se instala en exteriores, recuerde envolver firmemente ambos conectores con la cinta adhesiva a prueba de agua incluida.



4. Instalación de antena interior

Antes de la instalación, compruebe que tiene los productos requeridos y que el contenido de cada producto está completo.



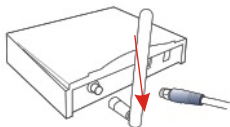
Una de las siguientes antenas:



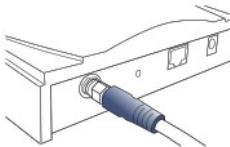
Nota: Las siguientes antenas interiores vienen con cables o se conectan directamente a su dispositivo Wi-Fi. No requieren cables adicionales para el ensamblado:



1. Desconecte la antena dipolo de su punto de acceso o enrutador.



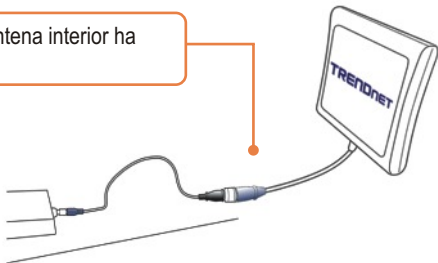
2. Conecte directamente el manguito azul (SMA inverso) del cable interior (TEW-L202/TEW-L208) al dispositivo WiFi.



3. Conecte la parte restante del manguito negro (tipo N) del cable de antena al manguito azul de la antena (tipo N).



4. La instalación de antena interior ha finalizado.



Limited Warranty

TRENDnet warrants its products against defects in material and workmanship, under normal use and service, for the following lengths of time from the date of purchase.

TEW-ASAK, TEW-L202, TEW-L208, TEW-L406, TEW-L412 - 3 Year Warranty
TEW-AO08O, TEW-AO10O, TEW-AO09D, TEW-AO14D, TEW-AO19D- 3 Year Warranty

If a product does not operate as warranted above during the applicable warranty period, TRENDnet shall, at its option and expense, repair the defective product or part, deliver to customer an equivalent product or part to replace the defective item, or refund to customer the purchase price paid for the defective product. All products that are replaced will become the property of TRENDnet. Replacement products may be new or reconditioned.

TRENDnet shall not be responsible for any software, firmware, information, or memory data of customer contained in, stored on, or integrated with any products returned to TRENDnet pursuant to any warranty.

There are no user serviceable parts inside the product. Do not remove or attempt to service the product by any unauthorized service center. This warranty is voided if (i) the product has been modified or repaired by any unauthorized service center, (ii) the product was subject to accident, abuse, or improper use (iii) the product was subject to conditions more severe than those specified in the manual.

Warranty service may be obtained by contacting TRENDnet office within the applicable warranty period for a Return Material Authorization (RMA) number, accompanied by a copy of the dated proof of the purchase. Products returned to TRENDnet must be pre-authorized by TRENDnet with RMA number marked on the outside of the package, and sent prepaid, insured and packaged appropriately for safe shipment.

WARRANTIES EXCLUSIVE: IF THE TRENDnet PRODUCT DOES NOT OPERATE AS WARRANTED ABOVE, THE CUSTOMER'S SOLE REMEDY SHALL BE, AT TRENDnet'S OPTION, REPAIR OR REPLACEMENT. THE FOREGOING WARRANTIES AND REMEDIES ARE EXCLUSIVE AND ARE IN LIEU OF ALL OTHER WARRANTIES, EXPRESSED OR IMPLIED, EITHER IN FACT OR BY OPERATION OF LAW, STATUTORY OR OTHERWISE, INCLUDING WARRANTIES OF MERCHANTABILITY AND FITNESS FOR A PARTICULAR PURPOSE. TRENDnet NEITHER ASSUMES NOR AUTHORIZES ANY OTHER PERSON TO ASSUME FOR IT ANY OTHER LIABILITY IN CONNECTION WITH THE SALE, INSTALLATION MAINTENANCE OR USE OF TRENDnet'S PRODUCTS.

TRENDnet SHALL NOT BE LIABLE UNDER THIS WARRANTY IF ITS TESTING AND EXAMINATION DISCLOSE THAT THE ALLEGED DEFECT IN THE PRODUCT DOES NOT EXIST OR WAS CAUSED BY CUSTOMER'S OR ANY THIRD PERSON'S MISUSE, NEGLIGENCE, IMPROPER INSTALLATION OR TESTING, UNAUTHORIZED ATTEMPTS TO REPAIR OR MODIFY, OR ANY OTHER CAUSE BEYOND THE RANGE OF THE INTENDED USE, OR BY ACCIDENT, FIRE, LIGHTNING, OR OTHER HAZARD.

LIMITATION OF LIABILITY: TO THE FULL EXTENT ALLOWED BY LAW TRENDnet ALSO EXCLUDES FOR ITSELF AND ITS SUPPLIERS ANY LIABILITY, WHETHER BASED IN CONTRACT OR TORT (INCLUDING NEGLIGENCE), FOR INCIDENTAL, CONSEQUENTIAL, INDIRECT, SPECIAL, OR PUNITIVE DAMAGES OF ANY KIND, OR FOR LOSS OF REVENUE OR PROFITS, LOSS OF BUSINESS, LOSS OF INFORMATION OR DATE, OR OTHER FINANCIAL LOSS ARISING OUT OF OR IN CONNECTION WITH THE SALE, INSTALLATION, MAINTENANCE, USE, PERFORMANCE, FAILURE, OR INTERRUPTION OF THE POSSIBILITY OF SUCH DAMAGES, AND LIMITS ITS LIABILITY TO REPAIR, REPLACEMENT, OR REFUND OF THE PURCHASE PRICE PAID, AT TRENDnet'S OPTION. THIS DISCLAIMER OF LIABILITY FOR DAMAGES WILL NOT BE AFFECTED IF ANY REMEDY PROVIDED HEREIN SHALL FAIL OF ITS ESSENTIAL PURPOSE.

Governing Law: This Limited Warranty shall be governed by the laws of the state of California.

AC/DC Power Adapter, Cooling Fan, and Power Supply carry 1 Year Warranty



TRENDnet Technical Support

US • Canada

Toll Free Telephone: 1(866) 845-3673

24/7 Tech Support



Europe (Germany • France • Italy • Spain • Switzerland • UK)

Toll Free Telephone: +00800 60 76 76 67

English/Espanol - 24/7

Francais/Deutsch - 11am-8pm, Monday - Friday MET

Worldwide

Telephone: +(31) (0) 20 504 05 35

English/Espanol - 24/7

Francais/Deutsch - 11am-8pm, Monday - Friday MET

Product Warranty Registration

Please take a moment to register your product online.

Go to TRENDnet's website at <http://www.trendnet.com>

TRENDnet

3135 Kashiwa Street
Torrance, CA 90505
USA