





Quick Installation Guide  

TEW-656BRG

1.01

Table of Contents

English	1
1. Before You Start	1
2. Hardware Installation	3
3. Configure the TEW-656BRG	4
4. LEDs	8
.....	
Troubleshooting	9
Wireless Tips	11



Package Contents

- TEW-656BRG
- CD-ROM (User's Guide)
- Multi-Language Quick Installation Guide
- USB Power Cable
- Power Adapter (5V DC, 1.2A)
- Carrying Case

System Requirements

- A computer with a wireless network adapter properly installed
- Web Browser: Internet Explorer (6.0 or above)
- Valid and activated 3G Internet Service
- 3G USB Adapter*

* For a list of compatible 3G USB Adapters, please go to <http://www.trendnet.com/products/TEW-656BRG>.

Collect Internet Service Provider (ISP) Information

During the installation of the TEW-656BRG, the Setup Wizard will automatically detect your ISP connection type. If the router cannot detect your ISP connection type, you can manually specify the connection type. Please contact your ISP and ensure you have all the information for one of the following connection types:

1. 3G (Auto Detection)

Pin Code (Optional): _____

2. 3G (Manual)

Country: _____

Telecom: _____

3G Network: _____

APN (Optional): _____

Pin Code (Optional): _____

Dialed Number: _____

Account (Optional): _____

Password (Optional): _____

3. iBurst

Account: _____

Password: _____

Primary DNS: _____

Secondary DNS: _____

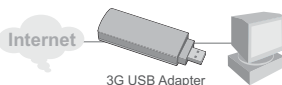
Service Name (Optional): _____

Assigned IP Address (Optional): _____

2. Hardware Installation

1. Verify that you have an Internet connection when connecting the 3G USB adapter to your computer. Open your browser (e.g. Internet Explorer) and type in a URL (e.g. <http://www.trendnet.com>) in the address bar.

Note: You may need to activate your Internet connection. Please contact your ISP for more information.



2. Connect the Mini-USB end of the power adapter to the TEW-656BRG.



3. Connect the power adapter to a power outlet.

4. Connect your 3G USB adapter to the USB port on the TEW-656BRG.



5. Move the Power switch to the On position.



6. Verify that the following panel lights are on: Wireless (Blue) and 3G (USB) (Blue).



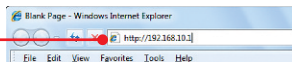
7. Connect your computer wirelessly to the TEW-656BRG. The default SSID (Wireless Network Name) of the TEW-656BRG is TRENDnet656. Contact the manufacturer of your wireless network adapter and make sure the wireless network adapter is configured with the proper SSID.

3. Configure the TEW-656BRG

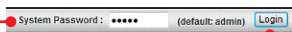
Note:

Gather all information related to your Internet Connection before you start. If necessary, contact your Internet Service Provider (ISP).

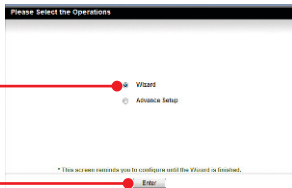
1. Open your web browser, type **http://192.168.10.1** in the Address bar, and then press **Enter**.



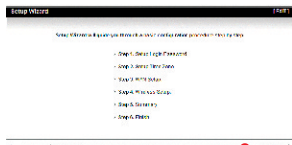
2. Enter the System Password, and then click **Login**. By default:
System Password: **admin**



3. Select **Wizard** and then click **Enter**.



4. Click **Next**.



5. Enter the Old password (By default, the **Password is admin**), enter a **New Password**, reconfirm the **New Password** and then click **Next**.



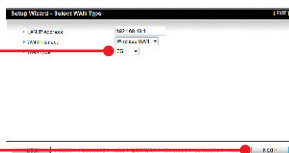
Note:

1. Setting a password prevents other users from accessing the TEW-656BRG configuration.
2. It is recommended that you enter a new password. If you decide to change this setting, please write down the new password.
3. Password is limited to up to 8 characters.

6. Select your Time Zone and then click **Next**.



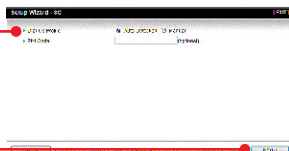
7. Select 3G or iBurst (the example shown is for 3G). Then click **Next**. Configure the settings based on information provided by your ISP. Follow the wizard instructions to complete the configuration. Note: Each WAN type may have different options.



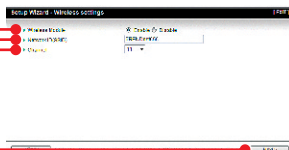
Note:

The example below is for Auto-detection. If the Setup Wizard could not automatically detect your Internet connection, select Manual and input the information provided by your ISP.

8. Select **Auto-Detection** and then click **Next**.



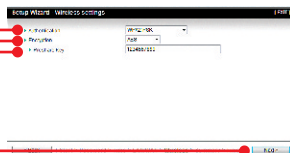
9. You will need to configure the following:
- Wireless Module (Enable/Disable): The default setting (Enable) must be selected.
 - Network ID (SSID): The SSID is the wireless network name of your wireless network (e.g. wireless router or access point). Enter a unique SSID. Do not use anything that would be identifying like "Smith Family Network". Choose something that you would easily identify when searching for available wireless networks.
 - Channel: In most cases, the default setting should be fine.



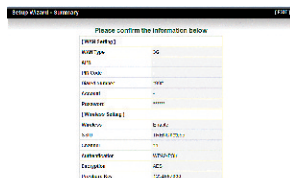
Note:

1. To protect your network from any unauthorized access it is recommended to enable wireless encryption.
2. The example below is for WPA2-PSK (AES) security. If you select WPA-PSK or WPA2-PSK, make sure your wireless adapters support WPA or WPA2. If your wireless adapters do not support WPA or WPA2, then select WEP.

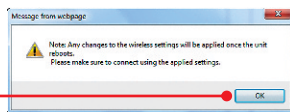
10. Select the desired **Authentication** mode, select the desired **Encryption** type, enter characters for your Pre-Shared key and then click **Next**. For WPA-PSK or WPA2-PSK, the Pre-Shared Key must be between 8 and 63 ASCII or 64 HEX characters. Make sure to copy down the Pre-Shared Key.



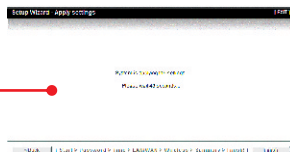
11. Click **Apply Settings**.



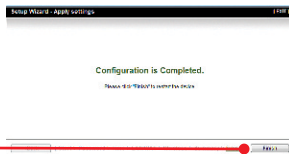
12. Click **OK**.



13. Wait around 40 seconds while the TEW-656BRG reboots.



14. Click **Finish**.



15. Open up your browser and enter in a URL (e.g. www.trendnet.com) to verify that you have Internet connection.



Your Configuration is now complete

For detailed information regarding the **TEW-656BRG**'s configuration and advanced settings, please refer to the Troubleshooting section, User's Guide CD-ROM, or TRENDnet's website at <http://www.trendnet.com>.

Register Your Product

To ensure the highest level of customer service and support, please take a moment to register your product Online at: www.trendnet.com/register

Thank you for choosing TRENDnet

Wireless

Blue (Solid):
Wireless is enabled.

Blue (Blinking):
Activity is occurring from this link.

Not Illuminated:
Wireless is not enabled or no power is being
supplied to the TEW-656BRG.



3G(USB)

Blue (Solid):
3G connection is established

Blue (Blinking):
Activity is occurring from this link

Not Illuminated:
3G connection is not established.

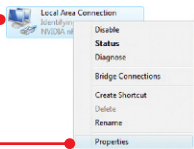


1. I typed `http://192.168.10.1` in my Internet Browser's Address Bar, but an error message says "The page cannot be displayed." How can I get into the TEW-656BRG's web configuration page?

1. Check your hardware settings again by following the instructions in Section 2.
2. Make sure the Wireless light is lit.
3. Enter `http://192.168.10.1` into the browser instead. This is the default IP address of the TEW-656BRG.
4. Make sure your network adapter's TCP/IP settings are set to Obtain an IP address automatically (see the steps below).
5. Reset the TEW-656BRG. To reset the TEW-656BRG, press the WPS button for 20 seconds, then let go. Wait 30 seconds, and then type `192.168.10.1` into your browser.

Windows 7

1. Go into the **Control Panel, Network and Internet**, click **Network and Sharing Center**, click **Change Adapter Settings** and then right-click the **Local Area Connection** icon and then click **Properties**.



Obtain an IP address automatically.

Use the following IP address:

IP address:

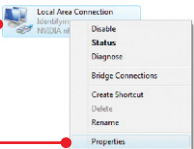
Subnet mask:

Default gateway:

2. Click **Internet Protocol Version 4 (TCP/IPv4)** and then click **Properties**. Then click on **Obtain an IP address automatically**.

Windows Vista

1. Go into the **Control Panel**, click **Network and Internet**, click **Network and Sharing Center**, click **Manage Network Connections** and then right-click the **Local Area Connection** icon and then click **Properties**.



Obtain an IP address automatically.

Use the following IP address:

IP address:

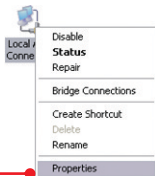
Subnet mask:

Default gateway:

2. Click **Internet Protocol Version 4(TCP/IPv4)** and then click **Properties**. Then click on **Obtain an IP address automatically**.

Windows XP/2000

1. Go into the **Control Panel**, double-click the **Network Connections** icon and then right-click the **Local Area Connection** icon and then click **Properties**.



2. Click **Internet Protocol (TCP/IP)** and then click **Properties**. Then click on **Obtain an IP address automatically**.

2. I am not sure what type of Internet Account Type I have for my Internet connection. How do I find out?

Contact your Internet Service Provider's (ISP) support service for the correct information.

3. I went through the Wizard, but I can not get onto the Internet. What should I do?

1. Verify that you can get onto the Internet by connecting your 3G USB adapter directly to your computer.
2. Contact your ISP and verify all the information that you have in regards to your Internet connection settings is correct.
3. Verify that the 3G USB adapter is firmly connected to the USB port on the TEW-656BRG.
4. Power cycle the TEW-656BRG. Move the power switch to the off position. Wait 30 seconds, then move the power switch back to the on position.

4. I cannot make a wireless connection to the TEW-656BRG. What should I do?

1. Double check that the wireless LED on the TEW-656BRG is lit.
2. Power cycle the TEW-656BRG. Move the power switch to the off position. Wait 30 seconds, then move the power back to the on position.
3. Contact the manufacturer of your wireless network adapter and make sure the wireless network adapter is configured with the proper SSID. The default SSID is TRENDnet656.
4. Please refer to the Wireless tips section if you continue to have wireless connectivity problems.

If you still encounter problems or have any questions regarding the **TEW-656BRG**, please contact TRENDnet's Technical Support Department.

The following are some general wireless tips to help minimize the impact of interference within an environment.

Assign your network a unique SSID

Do not use anything that would be identifying like “Smith Family Network”. Choose something that you would easily identify when searching for available wireless networks.

Do not turn off the SSID broadcast

The SSID broadcast is intended to be on and turning it off can cause connectivity issues. The preferred method of securing a wireless network is to choose a strong form of encryption with a strong and varied encryption key.

Note: after setting up the SSID, encryption type and encryption key/passphrase, please make a note of them for future reference. You will need this information to connect your wireless computers to the wireless router/access point.

Change the channel

Most wireless access points and routers are defaulted to channel 6. If you have a site survey tool that will display the channels you can plan your channel selection around neighboring access points to minimize interference from them. If your site survey tool does not display the channel try using channels 1 or 11.

Change the channel bandwidth

If you are using an 802.11n router or access point you can also make the following changes. Change the channel bandwidth to 20/40MHz. This will provide the highest possible performance using an 802.11n device. Also, if using 802.11n you should be securing the network with WPA2 security.

Note: Due to Wi-Fi certification considerations if you choose WEP, WPA or WPA2-TKIP encryption this device may operate in legacy wireless mode (802.11b/g). You may not get 802.11n performance as these forms of encryption are not supported by the 802.11n specification.

Avoid stacking hardware on top of each other to prevent overheating issues

Maintain enough free space around the hardware for good ventilation and airflow. There should also be plenty of free space around the antennas to allow the wireless signal to propagate. Please also make sure that the wireless hardware is not placed in any type of shelving or enclosures.

There are a number of other environmental factors that can impact the range of wireless devices.

1. Adjust your wireless devices so that the signal is traveling in a straight path, rather than at an angle. The more material the signal has to pass through the more signal you will lose.

2. Keep the number of obstructions to a minimum. Each obstruction can reduce the range of a wireless device. Position the wireless devices in a manner that will minimize the amount of obstructions between them.
3. Building materials can have a large impact on your wireless signal. In an indoor environment, try to position the wireless devices so that the signal passes through less dense material such as dry wall. Dense materials like metal, solid wood, glass or even furniture may block or degrade the signal.
4. Antenna orientation can also have a large impact on your wireless signal. Use the wireless adapter's site survey tool to determine the best antenna orientation for your wireless devices.
5. Interference from devices that produce RF (radio frequency) noise can also impact your signal. Position your wireless devices away from anything that generates RF noise, such as microwaves, HAM radios, Walkie-Talkies and baby monitors.
6. Any device operating on the 2.4GHz frequency will cause interference. Devices such as 2.4GHz cordless phones or other wireless remotes operating on the 2.4GHz frequency can potentially drop the wireless signal. Although the phone may not be in use, the base can still transmit wireless signals. Move the phone's base station as far away as possible from your wireless devices.

If you are still experiencing low or no signal consider repositioning the wireless devices or installing additional access points. The use of higher gain antennas may also provide the necessary coverage depending on the environment.

Declaration of Conformity



Company Information:

Company Name:
TRENDnet, Inc.

Company Address:
20675 Manhattan Place
Torrance, CA 90501
USA

Product Information:

Product Description:
3G Mobile Wireless N Router



Model Number:
TEW-656BRG

Brand name:
TRENDnet

Technical Standards:

EN 300 328 V1.7.1: 10-2006
EN 301 489-1 V1.8.1: 04-2008
EN 301 489-17 V1.3.2: 04-2008
EN 5022 : 2006 + A1 : 2007
EN 61000-3-3 : 1995 + A1 : 2001 + A2 : 2005
EN 55024 : 1998 + A1 : 2001 + A2 : 2003
EN 60950-1 : 2006 + A11 : 2009

Declaration:

The product is herewith confirmed to comply with the requirements of Directive 1999/5/EC of the Council (European Parliament) on the radio and telecommunications terminal equipment and Energy-related products Directive 2009/125/EC.

I hereby declare that the products and devices mentioned above are consistent with the standards and provisions of the guidelines.

Sonny Su

Full Name

February 10, 2011

Date

Director of Technology

Position / Title

Signature

GPL/LGPL General Information

This TRENDnet product includes free software written by third party developers. These codes are subject to the GNU General Public License ("GPL") or GNU Lesser General Public License ("LGPL"). These codes are distributed WITHOUT WARRANTY and are subject to the copyrights of the developers. TRENDnet does not provide technical support for these codes. The details of the GNU GPL and LGPL are included in the product CD-ROM.

Please also go to (<http://www.gnu.org/licenses/gpl.txt>) or (<http://www.gnu.org/licenses/lgpl.txt>) for specific terms of each license.

The source codes are available for download from TRENDnet's web site (http://trendnet.com/downloads/list_gpl.asp) for at least three years from the product shipping date.

You could also request the source codes by contacting TRENDnet.

20675 Manhattan Place, Torrance, CA 90501, USA. Tel: +1-310-961-5500 Fax: +1-310-961-5511

Informations générales GPL/LGPL

Ce produit TRENDnet comprend un logiciel libre écrit par des programmeurs tiers. Ces codes sont sujet à la GNU General Public License ("GPL" Licence publique générale GNU) ou à la GNU Lesser General Public License ("LGPL" Licence publique générale limitée GNU). Ces codes sont distribués SANS GARANTIE et sont sujets aux droits d'auteurs des programmeurs. TRENDnet ne fournit pas d'assistance technique pour ces codes. Les détails concernant les GPL et LGPL GNU sont repris sur le CD-ROM du produit.

Veillez également vous rendre en (<http://www.gnu.org/licenses/gpl.txt>) ou en (<http://www.gnu.org/licenses/lgpl.txt>) pour les conditions spécifiques de chaque licence.

Les codes source sont disponibles au téléchargement sur le site Internet de TRENDnet web site (http://trendnet.com/downloads/list_gpl.asp) durant au moins 3 ans à partir de la date d'expédition du produit.

Vous pouvez également demander les codes source en contactant TRENDnet.

20675 Manhattan Place, Torrance, CA 90501, USA. Tel: +1-310-961-5500 Fax: +1-310-961-5511

Allgemeine Informationen zu GPL/LGPL

Dieses Produkt enthält die freie Software "netfilter/iptables" (© 2000-2004 netfilter project <http://www.netfilter.org>) und die freie Software „Linux „mtd“ (Memory Technology Devices) Implementation (© 2000 David Woodhouse), erstmals integriert in Linux Version 2.4.0-test 3 v. 10.07.2000 (<http://www.kernel.org/pub/linux/kernel/v2.4/old-test-kernels/linux-2.4.0-test3.tar.bz2>), sowie weitere freie Software. Sie haben durch den Erwerb dieses Produktes keinerlei Gewährleistungsansprüche gegen die Berechtigten an der oben genannten Software erworben; weil diese die Software kostenfrei lizenzieren gewähren sie keine Haftung gemäß unten abgedruckten Lizenzbedingungen. Die Software darf von jedermann im Quell- und Objektcode unter Beachtung der Lizenzbedingungen der GNU General Public License Version 2, und GNU Lesser General Public License (LGPL) vervielfältigt, verbreitet und verarbeitet werden.

Die Lizenz ist unten im englischsprachigen Originalwortlaut wiedergegeben. Eine nichtoffizielle Übersetzung in die deutsche Sprache finden Sie im Internet unter (<http://www.gnu.de/documents/gpl-2.0.de.html>). Eine allgemeine öffentliche GNU Lizenz befindet sich auch auf der mitgelieferten CD-ROM.

Sie können Quell- und Objektcode der Software für mindestens drei Jahre auf unserer Homepage www.trendnet.com im Downloadbereich (http://trendnet.com/langen/downloads/list_gpl.asp) downloadend. Sofern Sie nicht über die Möglichkeit des Downloads verfügen können Sie bei TRENDnet.

20675 Manhattan Place, Torrance, CA 90501 -U.S.A.-, Tel.: +1-310-961-5500, Fax: +1-310-961-5511 die Software anfordern.

Información general sobre la GPL/LGPL

Este producto de TRENDnet incluye un programa gratuito desarrollado por terceros. Estos códigos están sujetos a la Licencia pública general de GNU ("GPL") o la Licencia pública general limitada de GNU ("LGPL"). Estos códigos son distribuidos SIN GARANTÍA y están sujetos a las leyes de propiedad intelectual de sus desarrolladores. TRENDnet no ofrece servicio técnico para estos códigos. Los detalles sobre las licencias GPL y LGPL de GNU se incluyen en el CD-ROM del producto.

Consulte también el (<http://www.gnu.org/licenses/gpl.txt>) ó el (<http://www.gnu.org/licenses/lgpl.txt>) para ver las cláusulas específicas de cada licencia.

Los códigos fuentes están disponibles para ser descargados del sitio Web de TRENDnet (http://trendnet.com/downloads/list_gpl.asp) durante por lo menos tres años a partir de la fecha de envío del producto.

También puede solicitar el código fuente llamando a TRENDnet.

20675 Manhattan Place, Torrance, CA 90501, USA. Tel: +1-310-961-5500 Fax: +1-310-961-5511

Общая информация о лицензиях GPL/LGPL

В состав данного продукта TRENDnet входит бесплатное программное обеспечение, написанное сторонними разработчиками. Это ПО распространяется на условиях лицензий GNU General Public License ("GPL") или GNU Lesser General Public License ("LGPL"). Программы распространяются БЕЗ ГАРАНТИИ и охраняются авторскими правами разработчиков. TRENDnet не оказывает техническую поддержку этого программного обеспечения. Подробное описание лицензий GNU GPL и LGPL можно найти на компакт-диске, прилагаемом к продукту.

В пункте <http://www.gnu.org/licenses/gpl.txt> и <http://www.gnu.org/licenses/lgpl.txt> изложены конкретные условия каждой из лицензий.

Исходный код программ доступен для загрузки с веб-сайта TRENDnet (http://trendnet.com/downloads/list_gpl.asp) в течение, как минимум, трех лет со дня поставки продукта.

Кроме того, исходный код можно запросить по адресу TRENDnet.
20675 Manhattan Place, Torrance, CA 90501, USA. Tel: +1-310-961-5500 Fax: +1-310-961-5511

GPL/LGPL informações Gerais

Este produto TRENDnet inclui software gratuito desenvolvido por terceiros. Estes códigos estão sujeitos ao GPL (GNU General Public License) ou ao LGPL (GNU Lesser General Public License). Estes códigos são distribuídos SEM GARANTIA e estão sujeitos aos direitos autorais dos desenvolvedores. TRENDnet não presta suporte técnico a estes códigos. Os detalhes do GNU GPL e do LGPL estão no CD-ROM do produto. Favor acessar <http://www.gnu.org/licenses/gpl.txt> ou <http://www.gnu.org/licenses/lgpl.txt> para os termos específicos de cada licença.

Os códigos fonte estão disponíveis para download no site da TRENDnet (http://trendnet.com/langen/downloads/list_gpl.asp) por pelo menos três anos da data de embarque do produto.

Você também pode solicitar os códigos fonte contactando TRENDnet, 20675 Manhattan Place, Torrance, CA 90501, USA. Tel: +1-310-961-5500, Fax: +1-310-961-5511.

GPL/LGPL üldinformatsioon

See TRENDneti toode sisaldab vaba tarkvara, mis on kirjutatud kolmanda osapoolse poolt. Koodid on allutatud GNU (General Public License) Üldise Avaliku Litsentsi (GPL) või GNU (Lesser General Public License) ("LGPL") Vähem Üldine Avalik Litsentsiga. Koode vahendatakse ILMA GARANTIITA ja need on allutatud arendajate poolt. TRENDnet ei anna koodidele tehnilist tuge. Detailsemat infot GNU GPL ja LGPL kohta leiate toote CD-ROMil. Infot mõlema litsentsi spetsiifiliste terminite kohta leiate (<http://www.gnu.org/licenses/gpl.txt>) või (<http://www.gnu.org/licenses/lgpl.txt>).

Infot mõlema litsentsi spetsiifiliste terminite kohta leiate (<http://www.gnu.org/licenses/gpl.txt>) või (<http://www.gnu.org/licenses/lgpl.txt>). Lähtekoodi on võimalik alla laadida TRENDneti kodulehelt (http://trendnet.com/langen/downloads/list_gpl.asp) kolme aasta jooksul alates toote kättesaamise kuupäevast.

Samuti võite lähtekoodi paluda TRENDnet'ilt, 20675 Manhattan Place, Torrance, CA 90501, USA. Tel: +1-310-961-5500, Fax: +1-310-961-5511.

Certifications

This equipment has been tested and found to comply with FCC and CE Rules.

Operation is subject to the following two conditions:

- (1) This device may not cause harmful interference.
- (2) This device must accept any interference received. Including interference that may cause undesired operation.



Waste electrical and electronic products must not be disposed of with household waste. Please recycle where facilities exist. Check with you Local Authority or Retailer for recycling advice.



NOTE: THE MANUFACTURER IS NOT RESPONSIBLE FOR ANY RADIO OR TV INTERFERENCE CAUSED BY UNAUTHORIZED MODIFICATIONS TO THIS EQUIPMENT. SUCH MODIFICATIONS COULD VOID THE USER'S AUTHORITY TO OPERATE THE EQUIPMENT.

ADVERTENCIA

En todos nuestros equipos se mencionan claramente las características del adaptador de alimentación necesario para su funcionamiento. El uso de un adaptador distinto al mencionado puede producir daños físicos y/o daños al equipo conectado. El adaptador de alimentación debe operar con voltaje y frecuencia de la energía eléctrica domiciliar existente en el país o zona de instalación.



Product Warranty Registration

Please take a moment to register your product online.
Go to TRENDnet's website at <http://www.trendnet.com/register>