



Руководство по быстрой установк 

TEW-650AP  
1.01

# Table of Contents

Русский	1
1. Что нужно сделать в самом начале	1
2. Установка оборудования	2
.....	
Troubleshooting	8



## Содержимое упаковки

- TEW-650AP
- Руководство по быстрой установке на нескольких языках
- CD-ROM (руководство пользователя и служебная программа)
- Адаптер источника питания (12В пост. тока, 0.5А)
- Категория 5 кабель Ethernet (0.6м / 2ft.)

## Требования к установке

- Веб-браузер типа Internet Explorer (6 или выше)
- Компьютер с должным образом установленным сетевым или беспроводным адаптером.
- Маршрутизатор с имеющимся сетевым портом ЛС.
- Доступный сервер DHCP - маршрутизаторы обычно имеют встроенный сервер DHCP.

## 2. Установка оборудования

### Примечание:

1. Выберите удобное место для точки доступа. Лучше всего точку доступа расположить в центре своей сети беспроводной связи.
2. Перед установкой оборудования отключите антивирусные программы и межсетевые экраны.

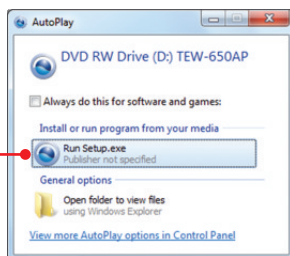
### Пользователям Users

1. Установите **CD-ROM-диск со служебной программой** в дисковод CD-ROM компьютера.

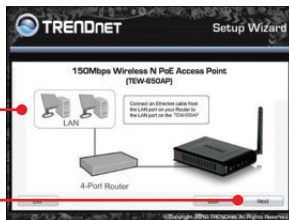
2. Нажмите **Run Setup.exe** (только для Windows 7/ Vista).

3. Выберите **Мастер установки**.

4. Отметьте **Я принимаю условия Лицензионного соглашения** и нажмите на кнопку **Далее**.



5. Подключите прилагаемый кабель RJ-45 к портам LAN маршрутизатора и устройства TEW-650AP. Затем нажмите **Next**.

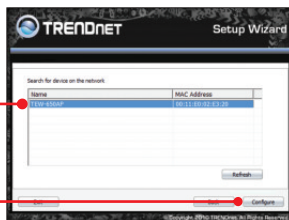


6. Подключите прилагаемый кабель RJ-45 к порту LAN маршрутизатора и порту Ethernet компьютера.

7. Подключите адаптер питания к точке доступа, а затем включите его в розетку. Убедитесь, что выключатель питания находится в положении 'On', а затем нажмите **Next**.



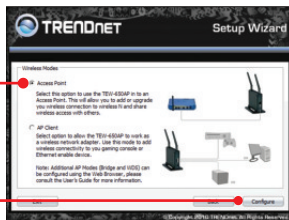
8. Выберите TEW-650AP из списка и нажмите на кнопку **Конфигурировать**.



9. Введите пароль и нажмите на кнопку **Вход**. По умолчанию пароль отсутствует.



10. Выберите **Access Point** и нажмите **Next**.  
Внимание: Чтобы настроить клиент точки доступа, обратитесь к пошаговой инструкции в Руководстве пользователя. Руководство пользователя находится на компакт-диске, входящем в комплект поставки устройства.



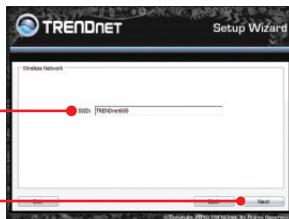
11. Выберите **Dynamic IP Address Configuration** и нажмите **Configure**.



12. Выберите **Ручная настройка** и нажмите на кнопку **Далее**.



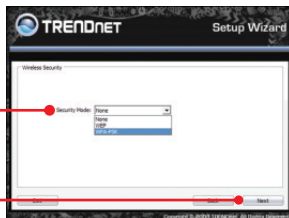
13. Введите SSID и нажмите на кнопку **Далее**.  
По умолчанию SSID таков-**TRENDnet650**.



14. Выберите необходимый режим в разделе **Wireless Mode** и нажмите **Next**.

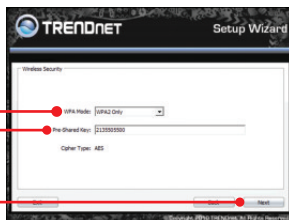


15. Выберите режим безопасности и нажмите на кнопку **Далее** (в примере показан WPA-PSK).

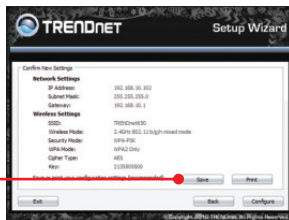


**Внимание:** Для защиты сети от неавторизованного доступа рекомендуется включить шифрование данных.

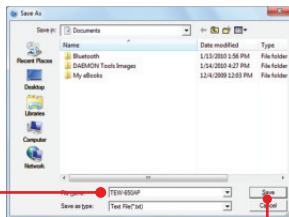
16. Выберите необходимый режим **WPA**, введите открытый ключ и нажмите **Next**. Для режимов WPA-PSK и WPA2-PSK открытый ключ должен иметь длину от 8 до 63 символов ASCII или до 64 символов HEX. Не забудьте записать открытый ключ.



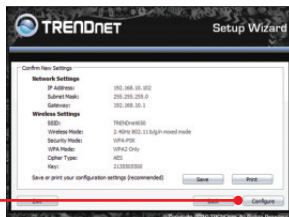
17. Щелкните по кнопке **Save** (выборочно).



18. Задайте файлу имя и нажмите на кнопку **Сохранить** (выборочно).



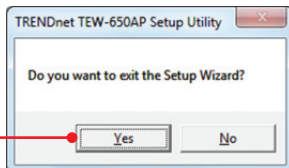
19. Нажмите **Configure** (Конфигурировать), чтобы применить настройки.



20. Щелкните по кнопке **Exit**.



21. Для выхода нажмите на **Да**.





22. Подключите отделяемую антенну (2dBi) к устройству TEW-650AP.



**Внимание:** Чтобы подключить компьютер к TEW-650AP по беспроводной сети, см. раздел по диагностике неисправностей.

### Настройка беспроводной конфигурации выполнена

Подробную информацию о конфигурации устройства **TEW-650AP** и его дополнительных настройках можно получить в разделе Устранение неисправностей из руководства пользователя на компакт-диске или на веб-сайте TRENDnet по адресу <http://www.trendnet.com>.

### Зарегистрируйте свой продукт

Для того, чтобы воспользоваться сервисным обслуживанием и поддержкой на высшем уровне, предлагаем вам зарегистрировать свой продукт в режиме онлайн здесь: [www.trendnet.com/register](http://www.trendnet.com/register) Благодарим Вас за то, что Вы выбрали TRENDnet

1. All the settings are correct, but I can not make a wireless connection to the Access Point.

1. Double check that the wireless LED on the Access Point is lit.
2. Power cycle the Access Point. Unplug the power to the Access Point. Wait 15 seconds, then plug the power back in.
3. Contact the manufacturer of your wireless network adapter. Make sure the wireless network adapter is configured with the proper SSID. The default SSID of the Access Point is TRENDnet650AP. If you have enabled any encryption on the Access Point, make sure to configure the wireless network adapter with the same security key.

2. I am trying to connect additional wireless adapters, but I don't remember the encryption (network) key. What should I do?

From a wired computer, log on to the access point configuration page. Click Wireless → Security. The encryption key will be listed here.

3. I have a wireless adapter that supports WiFi Protected Setup (WPS) push button setup. How do I setup WPS between the TEW-650AP and my wireless adapter?

1. Press on the WPS button on the front of the TEW-650AP for 10 seconds.
2. Refer to your wireless adapters for instructions on setting up WPS.

4. I inserted the Utility CD-ROM into my computer's CD-ROM Drive but the installation menu does not appear automatically. What should I do?

1. For Windows 7, if the installation menu does not appear automatically, click on the Windows Icon on the bottom left hand corner of the screen, click the "Search programs and files" box, and type D:\autorun.exe, where "D" in "D:\autorun.exe" is the letter assigned to your CD-ROM Drive, and then press the ENTER key on your keyboard
2. For Windows Vista, if the installation menu does not appear automatically, click on the Windows Icon on the bottom left hand corner of the screen, click on the "Start Search" box, and type D:\autorun.exe, where "D" in "D:\autorun.exe" is the letter assigned to your CD-ROM Drive, and then press the ENTER key on your keyboard.
3. For Windows XP/2000 if the window does not appear automatically, click Start, click Run and type D:\autorun.exe where "D" in "D:\autorun.exe" is the letter assigned to your CD-ROM Drive, and then press the ENTER key on your keyboard.

5. I do not have a DHCP server or DHCP is disabled on my network and I am unable to configure the TEW-650AP. What should I do?

1. Go to the TCP/IP settings on your computer's network's adapter. Assign a static IP address of 192.168.10.7 with a subnet mask of 255.255.255.0. Since the default IP address of the TEW-650AP is 192.168.10.100, do not assign a static IP address of 192.168.10.100 on your computer's network adapter.
2. Open Internet Explorer or web browser and enter <http://192.168.10.100> into the address bar. The default login for the TEW-650AP is username:admin/  
Password: (blank).

6. How do I configure AP Client mode on the TEW-650AP?

Please refer to the User Guide. The User Guide is on the provided CD-ROM.

If you still encounter problems or have any questions regarding the TEW-650AP, please contact TRENDnet's Technical Support Department.

The following are some general wireless tips to help minimize the impact of interference within an environment.

### Assign your network a unique SSID

Do not use anything that would be identifying like "Smith Family Network". Choose something that you would easily identify when searching for available wireless networks.

### Do not turn off the SSID broadcast

The SSID broadcast is intended to be on and turning it off can cause connectivity issues. The preferred method of securing a wireless network is to choose a strong form of encryption with a strong and varied encryption key.

**Note: after setting up the SSID, encryption type and encryption key/passphrase, please make a note of them for future reference. You will need this information to connect your wireless computers to the wireless router/access point.**

### Change the channel

Most wireless access points and routers are defaulted to channel 6. If you have a site survey tool that will display the channels you can plan your channel selection around neighboring access points to minimize interference from them. If your site survey tool does not display the channel try using channels 1 or 11.

### Change the channel bandwidth

If you are using an 802.11n router or access point you can also make the following changes. Change the channel bandwidth to 20/40MHz. This will provide the highest possible performance using an 802.11n device. Also, if using 802.11n you should be securing the network with WPA2 security.

**Note: Due to Wi-Fi certification considerations if you choose WEP, WPA or WPA2-TKIP encryption this device may operate in legacy wireless mode (802.11b/g). You may not get 802.11n performance as these forms of encryption are not supported by the 802.11n specification.**

### Avoid stacking hardware on top of each other to prevent overheating issues

Maintain enough free space around the hardware for good ventilation and airflow. There should also be plenty of free space around the antennas to allow the wireless signal to propagate. Please also make sure that the wireless hardware is not placed in any type of shelving or enclosures.

There are a number of other environmental factors that can impact the range of wireless devices.

1. Adjust your wireless devices so that the signal is traveling in a straight path, rather than at an angle. The more material the signal has to pass through the more signal you will lose.

2. Keep the number of obstructions to a minimum. Each obstruction can reduce the range of a wireless device. Position the wireless devices in a manner that will minimize the amount of obstructions between them.
3. Building materials can have a large impact on your wireless signal. In an indoor environment, try to position the wireless devices so that the signal passes through less dense material such as dry wall. Dense materials like metal, solid wood, glass or even furniture may block or degrade the signal.
4. Antenna orientation can also have a large impact on your wireless signal. Use the wireless adapter's site survey tool to determine the best antenna orientation for your wireless devices.
5. Interference from devices that produce RF (radio frequency) noise can also impact your signal. Position your wireless devices away from anything that generates RF noise, such as microwaves, HAM radios, Walkie-Talkies and baby monitors.
6. Any device operating on the 2.4GHz frequency will cause interference. Devices such as 2.4GHz cordless phones or other wireless remotes operating on the 2.4GHz frequency can potentially drop the wireless signal. Although the phone may not be in use, the base can still transmit wireless signals. Move the phone's base station as far away as possible from your wireless devices.

If you are still experiencing low or no signal consider repositioning the wireless devices or installing additional access points. The use of higher gain antennas may also provide the necessary coverage depending on the environment.

## GPL/LGPL General Information

This TRENDnet product includes free software written by third party developers. These codes are subject to the GNU General Public License ("GPL") or GNU Lesser General Public License ("LGPL"). These codes are distributed WITHOUT WARRANTY and are subject to the copyrights of the developers. TRENDnet does not provide technical support for these codes. The details of the GNU GPL and LGPL are included in the product CD-ROM. Please also go to (<http://www.gnu.org/licenses/gpl.txt>) or (<http://www.gnu.org/licenses/lgpl.txt>) for specific terms of each license. The source codes are available for download from TRENDnet's web site ([http://trendnet.com/downloads/list\\_gpl.asp](http://trendnet.com/downloads/list_gpl.asp)) for at least three years from the product shipping date. You could also request the source codes by contacting TRENDnet. 20675 Manhattan Place, Torrance, CA 90501, USA. Tel: +1-310-961-5500 Fax: +1-310-961-5511.

## Informations générales GPL/LGPL

Ce produit TRENDnet comprend un logiciel libre écrit par des programmeurs tiers. Ces codes sont sujet à la GNU General Public License ("GPL" Licence publique générale GNU) ou à la GNU Lesser General Public License ("LGPL" Licence publique générale limitée GNU). Ces codes sont distribués SANS GARANTIE et sont sujets aux droits d'auteurs des programmeurs. TRENDnet ne fournit pas d'assistance technique pour ces codes. Les détails concernant les GPL et LGPL GNU sont repris sur le CD-ROM du produit. Veuillez également vous rendre en (<http://www.gnu.org/licenses/gpl.txt>) ou en (<http://www.gnu.org/licenses/lgpl.txt>) pour les conditions spécifiques de chaque licence. Les codes source sont disponibles au téléchargement sur le site Internet de TRENDnet web site ([http://trendnet.com/downloads/list\\_gpl.asp](http://trendnet.com/downloads/list_gpl.asp)) durant au moins 3 ans à partir de la date d'expédition du produit. Vous pouvez également demander les codes source en contactant TRENDnet. 20675 Manhattan Place, Torrance, CA 90501, USA. Tel: +1-310-961-5500 Fax: +1-310-961-5511

## Allgemeine Informationen zu GPL/LGPL

Dieses Produkt enthält die freie Software "netfilter/iptables" (© 2000-2004 netfilter project <http://www.netfilter.org>) und die freie Software „Linux „\_mtd“ (Memory Technology Devices) Implementation (© 2000 David Woodhouse), erstmals integriert in Linux Version 2.4.0-test 3 v. 10.07.2000 (<http://www.kernel.org/pub/linux/kernel/v2.4/old-test-kernels/linux-2.4.0-test3.tar.bz2>), sowie weitere freie Software. Sie haben durch den Erwerb dieses Produktes keinerlei Gewährleistungsansprüche gegen die Berechtigten an der oben genannten Software erworben; weil diese die Software kostenfrei lizenzieren gewähren sie keine Haftung gemäß unten abgedruckten Lizenzbedingungen. Die Software darf von jedermann im Quell- und Objektcode unter Beachtung der Lizenzbedingungen der GNU General Public License Version 2, und GNU Lesser General Public License (LGPL) vervielfältigt, verbreitet und verarbeitet werden. Die Lizenz ist unten im englischsprachigen Originalwortlaut wiedergegeben. Eine nichtoffizielle Übersetzung in die deutsche Sprache finden Sie im Internet unter (<http://www.gnu.de/documents/gpl-2.0.de.html>). Eine allgemeine öffentliche GNU Lizenz befindet sich auch auf der mitgelieferten CD-ROM. Sie können Quell- und Objektcode der Software für mindestens drei Jahre auf unserer Homepage [www.trendnet.com](http://trendnet.com) im Downloadbereich ([http://trendnet.com/langen/downloads/list\\_gpl.asp](http://trendnet.com/langen/downloads/list_gpl.asp)) downloadend. Sofern Sie nicht über die Möglichkeit des Downloads verfügen können Sie bei TRENDnet. 20675 Manhattan Place, Torrance, CA 90501 -U.S.A -, Tel.: +1-310-961-5500, Fax: +1-310-961-5511 die Software anfordern.

## Información general sobre la GPL/LGPL

Este producto de TRENDnet incluye un programa gratuito desarrollado por terceros. Estos códigos están sujetos a la Licencia pública general de GNU ("GPL") o la Licencia pública general limitada de GNU ("LGPL"). Estos códigos son distribuidos SIN GARANTÍA y están sujetos a las leyes de propiedad intelectual de sus desarrolladores. TRENDnet no ofrece servicio técnico para estos códigos. Los detalles sobre las licencias GPL y LGPL de GNU se incluyen en el CD-ROM del producto. Consulte también el (<http://www.gnu.org/licenses/gpl.txt>) ó el (<http://www.gnu.org/licenses/lgpl.txt>) para ver las cláusulas específicas de cada licencia. Los códigos fuentes están disponibles para ser descargados del sitio Web de TRENDnet ([http://trendnet.com/downloads/list\\_gpl.asp](http://trendnet.com/downloads/list_gpl.asp)) durante por lo menos tres años a partir de la fecha de envío del producto. También puede solicitar el código fuente llamando a TRENDnet. 20675 Manhattan Place, Torrance, CA 90501, USA. Tel: +1-310-961-5500 Fax: +1-310-961-5511

### GPL/LGPL

TRENDnet

GNU General Public License ("GPL") GNU

Lesser General Public License ("LGPL").

TRENDnet

GNU GPL LGPL

(<http://www.gnu.org/licenses/gpl.txt>) (<http://www.gnu.org/licenses/lgpl.txt>)

TRENDnet

([http://trendnet.com/downloads/list\\_gpl.asp](http://trendnet.com/downloads/list_gpl.asp))

TRENDnet. 20675 Manhattan Place, Torrance, CA 90501, USA.

Tel: +1-310-961-5500 Fax: +1-310-961-5511

#### GPL/LGPL informações Gerais

Este produto TRENDnet inclui software gratuito desenvolvido por terceiros. Estes códigos estão sujeitos ao GPL (GNU General Public License) ou ao LGPL (GNU Lesser General Public License). Estes códigos são distribuídos SEM GARANTIA e estão sujeitos aos direitos autorais dos desenvolvedores. TRENDnet não presta suporte técnico a estes códigos. Os detalhes do GNU GPL e do LGPL estão no CD-ROM do produto. Favor acessar <http://www.gnu.org/licenses/gpl.txt> ou <http://www.gnu.org/licenses/lgpl.txt> para os termos específicos de cada licença. Os códigos fonte estão disponíveis para download no site da TRENDnet ([http://trendnet.com/langen/downloads/list\\_gpl.asp](http://trendnet.com/langen/downloads/list_gpl.asp)) por pelo menos três anos da data de embarque do produto. Você também pode solicitar os códigos fonte contactando TRENDnet, 20675 Manhattan Place, Torrance, CA 90501, USA. Tel: +1-310-961-5500, Fax: +1-310-961-5511.

#### GPL/LGPL üldinformatsioon

See TRENDneti toode sisaldab vaba tarkvara, mis on kirjutatud kolmanda osapoole poolt. Koodid on allutatud GNU (General Public License) Üldise Avaliku Litsentsi (GPL) või GNU (Lesser General Public License) ("LGPL") Vähem Üldine Avalik Litsentsiga. Koode vahendatakse ILMA GARANTIITA ja need on allutatud arendajate poolt. TRENDnet ei anna koodidele tehnilist tuge. Detailsemat infot GNU GPL ja LGPL kohta leiate toote CD-ROMil. Infot mõlema litsentsi spetsiifiliste terminite kohta leiate (<http://www.gnu.org/licenses/gpl.txt>) või (<http://www.gnu.org/licenses/lgpl.txt>). Infot mõlema litsentsi spetsiifiliste terminite kohta leiate (<http://www.gnu.org/licenses/gpl.txt>) või (<http://www.gnu.org/licenses/lgpl.txt>). Lähtekoodi on võimalik alla laadida TRENDneti kodulehelt ([http://trendnet.com/langen/downloads/list\\_gpl.asp](http://trendnet.com/langen/downloads/list_gpl.asp)) kolme aasta jooksul alates toote kättesaamise kuupäevast. Samuti võite lähtekoodi paluda TRENDneti'lt, 20675 Manhattan Place, Torrance, CA 90501, USA. Tel: +1-310-961-5500, Fax: +1-310-961-5511.

## Certifications

This equipment has been tested and found to comply with FCC and CE Rules.

Operation is subject to the following two conditions:

- (1) This device may not cause harmful interference.
- (2) This device must accept any interference received. Including interference that may cause undesired operation.



Waste electrical and electronic products must not be disposed of with household waste. Please recycle where facilities exist. Check with your Local Authority or Retailer for recycling advice.



**NOTE:** THE MANUFACTURER IS NOT RESPONSIBLE FOR ANY RADIO OR TV INTERFERENCE CAUSED BY UNAUTHORIZED MODIFICATIONS TO THIS EQUIPMENT. SUCH MODIFICATIONS COULD VOID THE USER'S AUTHORITY TO OPERATE THE EQUIPMENT.

### ADVERTENCIA

En todos nuestros equipos se mencionan claramente las características del adaptador de alimentación necesario para su funcionamiento. El uso de un adaptador distinto al mencionado puede producir daños físicos y/o daños al equipo conectado. El adaptador de alimentación debe operar con voltaje y frecuencia de la energía eléctrica domiciliar existente en el país o zona de instalación.





**TRENDnet<sup>®</sup>**

## Product Warranty Registration

Please take a moment to register your product online.  
Go to TRENDnet's website at <http://www.trendnet.com/register>