




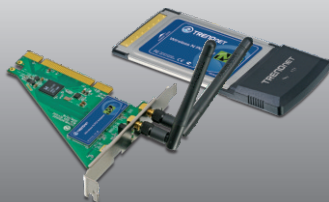
Guía de instalación rápida 

**TEW-641PC**  
**TEW-643PI**

1.03

# Table of Contents

Español	1
1. Antes de iniciar	1
2. Cómo se instala	2
3. Cómo usar el adaptador inalámbrico	7
.....	.....
Troubleshooting	9
Wireless Tip	10



## Contenidos del paquete

- TEW-641PC/TEW-643PI
- CD-ROM (Herramienta y controladores)
- Guía de instalación rápida multilingüe
- 2 antenas desmontables de 2dbi (sólo para TEW-643PI)

## Requisitos del sistema

- Ranura para Tarjeta Tipo II CardBus de 32 bits (TEW-641PC)
- Ranura PCI 2.2 de 32 bits (TEW-643PI)
- Unidad de CD-ROM
- CPU: 1GHz o superior (Windows 7) / 800MHz o superior (Windows Vista) / 300Mhz o superior (Windows XP/2000)
- Memoria: 1GB RAM o superior (Windows 7) / 512MB RAM o superior (Windows Vista) / 256MB RAM o superior (Windows XP/2000)
- Windows 7(32/64-bit) / Vista (32/64-bit) / XP (32/64-bit) / 2000

## 2. Cómo se instala

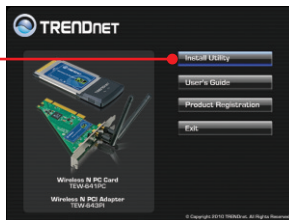
**¡Importante!** NO instale el TEW-641PC/TEW-643PI hasta que no se le indique.

1. Introduzca el CD-ROM del controlador y de la herramienta en la unidad de CD-ROM de su PC.

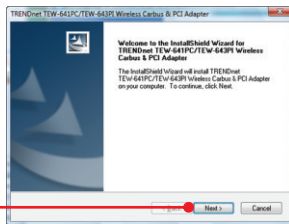
2. Haga clic en **Run autorun.exe** (sólo para Windows Vista).



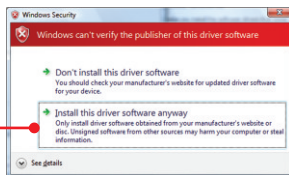
3. Haga clic en **Install Utility** (Instalar herramienta).



4. Siga las instrucciones del **InstallShield Wizard** (Asistente de Install Shield) y luego haga clic en **Next** (Siguiente).



5. Haga clic en **Install this driver software anyway** (Instalar el software de este controlador de todas formas) (Windows 7/Vista).



ENGLISH

FRAÇAIS

DEUTSCH

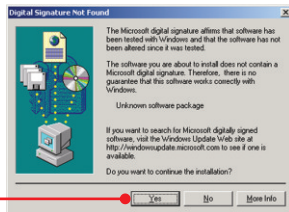
ESPAÑOL

РУССКИЙ

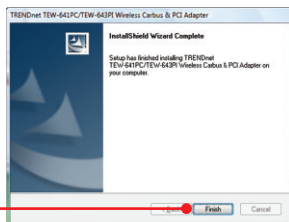
6. Haga clic en **Continue Anyway**  
(Continuar de todas formas). (Windows XP)



7. Haga clic en **Yes (Sí)**. (Windows 2000).



8. Haga clic en **Finish** (Finalizar).



**Nota:** Consulte, por favor, el manual de usuario de su ordenador con respecto a la instalación del hardware.

## TEW-641PC

9. Apague su PC.

10. Introduzca la tarjeta PC de manera firme en la ranura para tarjeta PC disponible de su PC notebook, después ENCIENDA el PC y espere hasta que aparezca el escritorio de Windows.



11. Vaya al Paso 15.

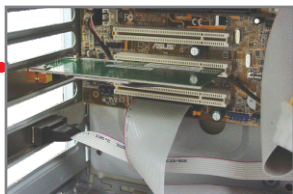
## TEW-641PC

12. Apague su PC.

13. Abra la caja de su PC.



14. Introduzca la tarjeta PCI de manera firme en la ranura para tarjeta PCI disponible de su PC desktop, después ENCIENDA el PC y espere hasta que aparezca el escritorio de Windows.



15. Para Windows XP, vaya al paso 17 Para Windows 2000, vaya al paso 15. Para Windows 7/Vista, prosiga con el paso 16.

## Windows 7/Vista

16. Windows 7/Vista lo detectará automáticamente e instalará los controladores apropiados.

# Windows XP

ENGLISH

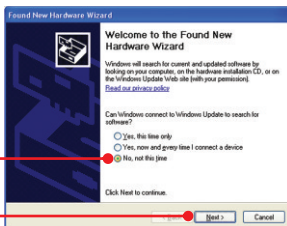
FRANÇAIS

DEUTSCH

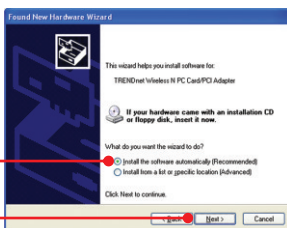
ESPAÑOL

РУССКИЙ

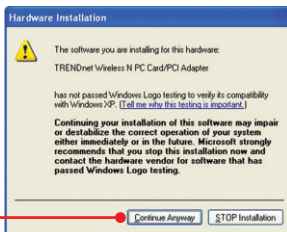
17. Le aparecerá la ventana **Found New Hardware** (Nuevo hardware encontrado). Seleccione **No** y haga clic en **Next** (Siguiente).



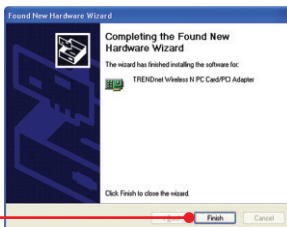
18. Seleccione **Install the software automatically** (Instalar el software automáticamente) (Recommended) y luego pulse **Next** (Siguiente).



19. Haga clic en **Continue Anyway**.

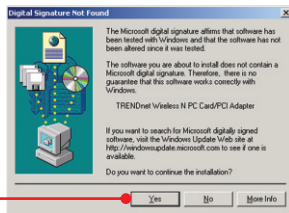


20. Haga clic en **Finish** (Finalizar).



## Windows 2000

21. Haga clic en **Yes (Si)**.



La instalación ha sido completada

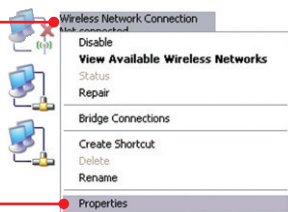


### 3. Cómo usar el adaptador inalámbrico

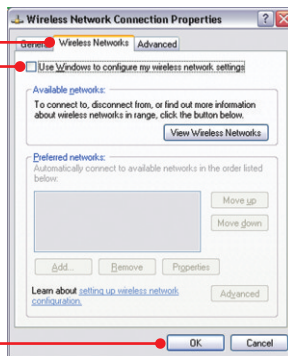
#### Nota:

1. Primero debe desactivar la herramienta para Configuración Cero de redes inalámbricas de Windows XP tal como se indica en los pasos 1 y 2. Si ya está desactivada, continúe con el paso 3.
2. Para Windows 7/Vista/2000 vaya al paso 3.

1. Vaya al **Control Panel** (Panel de Control) y haga doble clic en el icono de **Network Connections** (Conexiones de Red). Haga clic derecho en el icono **Wireless Network Connection** (Conexión de red inalámbrica) y luego en **Properties** (Propiedades).



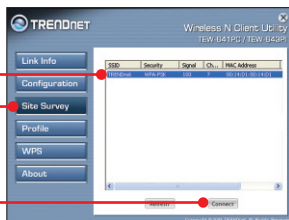
2. Haga clic en la pestaña **Wireless Networks** (Conexiones inalámbricas) y desactive "Use Windows to configure my wireless network settings" (Usar Windows para configurar mis configuraciones de red inalámbrica), después pulse **OK**.



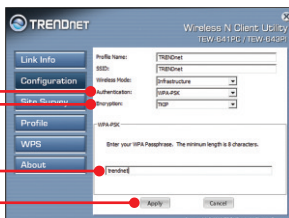
3. Haga doble clic en el icono de utilidad del cliente inalámbrico N en su bandeja del sistema.



4. Haga clic en la pestaña **Site Survey** (Inspección de sitio), y luego en el SSID, y después haga clic en **Connect** (conectar).



5. Si la encriptación está habilitada en su red inalámbrica, se seleccionarán de manera automática el tipo adecuado de Autenticación y el tipo de Encriptación. Introduzca la clave de encriptación y luego haga clic en **Apply** (Aplicar).



## La configuración inalámbrica ha finalizado

Para obtener información más detallada sobre la configuración y las opciones de configuración avanzadas de la **TEW-641PC/TEW-643PI**, por favor consulte la sección de resolución de problemas en el CD-ROM de la Guía del Usuario, o el sitio Web de TRENDnet en <http://www.trendnet.com>.

## Registre su producto

Para asegurar los más altos niveles de servicio y apoyo al cliente, registre su producto en línea en: [www.trendnet.com/register](http://www.trendnet.com/register) Gracias por elegir TRENDnet.

## 1. I inserted the Utility & Driver CD-ROM into my computer's CD-ROM Drive and the installation menu does not appear automatically. What should I do?

1. For Windows 7, if the installation menu does not appear automatically, click on the Windows icon on the bottom left hand corner of the screen., click the "Search programs and files" box, and type **D:\autorun.exe**, where "D" in "D:\autorun.exe" is the letter assigned to your CD-ROM Drive, and then press the ENTER key on your keyboard
2. For Windows Vista, if the installation menu does not appear automatically, click **Start**, click the **Start Search** box, and type **D:\autorun.exe** where "D" in "D:\autorun.exe" is the letter assigned to your CD-ROM Drive, and then press the ENTER key on your keyboard.
3. For Windows 2000/XP, if the installation menu does not appear automatically, click **Start**, click **Run**, and type **D:\autorun** where "D" in "D:\autorun.exe" is the letter assigned to your CD-ROM Drive, and then press the ENTER key on your keyboard.

## 2. I completed all the steps in the quick installation guide, but my Wireless Adapter is not connecting to my access point. What should I do?

1. Verify that the Network Name (SSID) matches your wireless router or access point's Network Name (SSID).
2. Check your TCP/IP properties to ensure that Obtain an IP address automatically is selected.
3. Open the Wireless N Client Utility, click Site Survey and then click refresh to check and see if there are any available wireless networks listed.
4. Your wireless network may be encrypted. Contact your network administrator to find the encryption type and encryption key. Then click on **Configuration** to enter the encryption key.

## 3 Windows is unable to recognize my hardware. What should I do?

1. Make sure your computer meets the minimum requirements as specified in Section 1 of this quick installation guide.
2. You must complete the installation of the wireless adapter configuration utility (as described in Section 2) before connecting the Wireless Adapter to your computer.
3. Connect the Wireless Adapter to a different PCI/PC Card slot on your computer.

## 4. I cannot open the Wireless N Client Utility. What should I do?

1. Access your device manager to make sure the adapter is installed properly. If you see a networking device with a yellow question mark or exclamation point, you will need to reinstall the device and/or the drivers. To access the device manager on Windows 7, click on the Windows icon on the bottom left hand corner of the screen, right-click on Computer, click Properties and then click **Device Manager**. To access the device manager on Windows Vista, right-click on **Computer**, click **Properties** and then click **Device Manager**. To access the device manager on Windows 2000/XP, right-click **My Computer**, click **Properties**, click the **Hardware** tab, and then click **Device Manager**.
2. If you are running Windows XP, you need to disable wireless zero configuration. Go to **Control Panel -> Network Connections**. Right click on the **Wireless Network Connection** icon and select **Properties**. Click on the **Wireless Networks** tab and uncheck **Use windows to configure my wireless settings**. Then click **OK**.

If you still encounter problems or have any questions regarding the **TEW-641PC/TEW-643PI**, please refer to the User's Guide included on the Utility & Driver CD-ROM or contact TRENDnet's Technical Support Department.

The following are some general wireless tips to help minimize the impact of interference within an environment.

### **Assign your network a unique SSID**

Do not use anything that would be identifying like “Smith Family Network”. Choose something that you would easily identify when searching for available wireless networks.

### **Do not turn off the SSID broadcast**

The SSID broadcast is intended to be on and turning it off can cause connectivity issues. The preferred method of securing a wireless network is to choose a strong form of encryption with a strong and varied encryption key.

**Note: after setting up the SSID, encryption type and encryption key/passphrase, please make a note of them for future reference. You will need this information to connect your wireless computers to the wireless router/access point.**

### **Change the channel**

Most wireless access points and routers are defaulted to channel 6. If you have a site survey tool that will display the channels you can plan your channel selection around neighboring access points to minimize interference from them. If your site survey tool does not display the channel try using channels 1 or 11.

### **Change the channel bandwidth**

If you are using an 802.11n router or access point you can also make the following changes. Change the channel bandwidth to 20/40MHz. This will provide the highest possible performance using an 802.11n device. Also, if using 802.11n you should be securing the network with WPA2 security.

**Note: Due to Wi-Fi certification considerations if you choose WEP, WPA or WPA2-TKIP encryption this device may operate in legacy wireless mode (802.11b/g). You may not get 802.11n performance as these forms of encryption are not supported by the 802.11n specification.**

### **Avoid stacking hardware on top of each other to prevent overheating issues**

Maintain enough free space around the hardware for good ventilation and airflow. There should also be plenty of free space around the antennas to allow the wireless signal to propagate. Please also make sure that the wireless hardware is not placed in any type of shelving or enclosures.

### **There are a number of other environmental factors that can impact the range of wireless devices.**

1. Adjust your wireless devices so that the signal is traveling in a straight path, rather than at an angle. The more material the signal has to pass through the more signal you will lose.

2. Keep the number of obstructions to a minimum. Each obstruction can reduce the range of a wireless device. Position the wireless devices in a manner that will minimize the amount of obstructions between them.
3. Building materials can have a large impact on your wireless signal. In an indoor environment, try to position the wireless devices so that the signal passes through less dense material such as dry wall. Dense materials like metal, solid wood, glass or even furniture may block or degrade the signal.
4. Antenna orientation can also have a large impact on your wireless signal. Use the wireless adapter's site survey tool to determine the best antenna orientation for your wireless devices.
5. Interference from devices that produce RF (radio frequency) noise can also impact your signal. Position your wireless devices away from anything that generates RF noise, such as microwaves, HAM radios, Walkie-Talkies and baby monitors.
6. Any device operating on the 2.4GHz frequency will cause interference. Devices such as 2.4GHz cordless phones or other wireless remotes operating on the 2.4GHz frequency can potentially drop the wireless signal. Although the phone may not be in use, the base can still transmit wireless signals. Move the phone's base station as far away as possible from your wireless devices.

If you are still experiencing low or no signal consider repositioning the wireless devices or installing additional access points. The use of higher gain antennas may also provide the necessary coverage depending on the environment.

## **GPL/LGPL General Information**

This TRENDnet product includes free software written by third party developers. These codes are subject to the GNU General Public License ("GPL") or GNU Lesser General Public License ("LGPL"). These codes are distributed WITHOUT WARRANTY and are subject to the copyrights of the developers. TRENDnet does not provide technical support for these codes. The details of the GNU GPL and LGPL are included in the product CD-ROM.

Please also go to (<http://www.gnu.org/licenses/gpl.txt>) or (<http://www.gnu.org/licenses/lgpl.txt>) for specific terms of each license.

The source codes are available for download from TRENDnet's web site ([http://trendnet.com/downloads/list\\_gpl.asp](http://trendnet.com/downloads/list_gpl.asp)) for at least three years from the product shipping date.

You could also request the source codes by contacting TRENDnet.

20675 Manhattan Place, Torrance, CA 90501, USA. Tel: +1-310-961-5500 Fax: +1-310-961-5511

## **Informations générales GPL/LGPL**

Ce produit TRENDnet comprend un logiciel libre écrit par des programmeurs tiers. Ces codes sont sujet à la GNU General Public License ("GPL" Licence publique générale GNU) ou à la GNU Lesser General Public License ("LGPL" Licence publique générale limitée GNU). Ces codes sont distribués SANS GARANTIE et sont sujets aux droits d'auteurs des programmeurs. TRENDnet ne fournit pas d'assistance technique pour ces codes. Les détails concernant les GPL et LGPL GNU sont repris sur le CD-ROM du produit.

Veuillez également vous rendre en (<http://www.gnu.org/licenses/gpl.txt>) ou en (<http://www.gnu.org/licenses/lgpl.txt>) pour les conditions spécifiques de chaque licence.

Les codes source sont disponibles au téléchargement sur le site Internet de TRENDnet web site ([http://trendnet.com/downloads/list\\_gpl.asp](http://trendnet.com/downloads/list_gpl.asp)) durant au moins 3 ans à partir de la date d'expédition du produit.

Vous pouvez également demander les codes source en contactant TRENDnet.

20675 Manhattan Place, Torrance, CA 90501, USA. Tel: +1-310-961-5500 Fax: +1-310-961-5511

## **Allgemeine Informationen zu GPL/LGPL**

Dieses Produkt enthält die freie Software "netfilter/iptables" (© 2000-2004 netfilter project <http://www.netfilter.org>) und die freie Software "Linux\_mtd" (Memory Technology Devices) Implementation (© 2000 David Woodhouse), erstmals integriert in Linux Version 2.4.0-test 3 v. 10.07.2000 (<http://www.kernel.org/pub/linux/kernel/v2.4/old-test-kernels/linux-2.4.0-test3.tar.bz2>), sowie weitere freie Software. Sie haben durch den Erwerb dieses Produktes keinerlei Gewährleistungsansprüche gegen die Berechtigten an der oben genannten Software erworben; weil diese die Software kostenfrei lizenzieren gewähren sie keine Haftung gemäß unten abgedruckten Lizenzbedingungen. Die Software darf von jedermann im Quell- und Objektcode unter Beachtung der Lizenzbedingungen der GNU General Public License Version 2, und GNU Lesser General Public License (LGPL) vervielfältigt, verbreitet und verarbeitet werden. Die Lizenz ist unten im englischsprachigen Originalwortlaut wiedergegeben. Eine nichtoffizielle Übersetzung in die deutsche Sprache finden Sie im Internet unter (<http://www.gnu.de/documents/gpl-2.0.de.html>). Eine allgemeine öffentliche GNU Lizenz befindet sich auch auf der mitgelieferten CD-ROM.

Sie können Quell- und Objektcode der Software für mindestens drei Jahre auf unserer Homepage [www.trendnet.com](http://www.trendnet.com) im Downloadbereich ([http://trendnet.com/langen/downloads/list\\_gpl.asp](http://trendnet.com/langen/downloads/list_gpl.asp)) downloadend. Sofern Sie nicht über die Möglichkeit des Downloads verfügen können Sie bei TRENDnet.

20675 Manhattan Place, Torrance, CA 90501 - U.S.A., Tel.: +1-310-961-5500, Fax: +1-310-961-5511 die Software anfordern.

## **Información general sobre la GPL/LGPL**

Este producto de TRENDnet incluye un programa gratuito desarrollado por terceros. Estos códigos están sujetos a la Licencia pública general de GNU ("GPL") o la Licencia pública general limitada de GNU ("LGPL"). Estos códigos son distribuidos SIN GARANTÍA y están sujetos a las leyes de propiedad intelectual de sus desarrolladores. TRENDnet no ofrece servicio técnico para estos códigos. Los detalles sobre las licencias GPL y LGPL de GNU se incluyen en el CD-ROM del producto.

Consulte también el (<http://www.gnu.org/licenses/gpl.txt>) ó el (<http://www.gnu.org/licenses/lgpl.txt>) para ver las cláusulas específicas de cada licencia.

Los códigos fuentes están disponibles para ser descargados del sitio Web de TRENDnet

([http://trendnet.com/downloads/list\\_gpl.asp](http://trendnet.com/downloads/list_gpl.asp)) durante por lo menos tres años a partir de la fecha de envío del producto.

También puede solicitar el código fuente llamando a TRENDnet.

20675 Manhattan Place, Torrance, CA 90501, USA. Tel: +1-310-961-5500 Fax: +1-310-961-5511

## **Общая информация о лицензиях GPL/LGPL**

В состав данного продукта TRENDnet входит бесплатное программное обеспечение, написанное сторонними разработчиками. Это ПО распространяется на условиях лицензий GNU General Public License ("GPL") или GNU Lesser General Public License ("LGPL"). Программы распространяются БЕЗ ГАРАНТИИ и охраняются авторскими правами разработчиков. TRENDnet не оказывает техническую поддержку этого программного обеспечения. Подробное описание лицензий GNU GPL и LGPL можно найти на компакт-диске, прилагаемом к продукту.

В пунктах (<http://www.gnu.org/licenses/gpl.txt>) и (<http://www.gnu.org/licenses/lgpl.txt>) изложены конкретные условия каждой из лицензий.

Исходный код программ доступен для загрузки с веб-сайта TRENDnet ([http://trendnet.com/downloads/list\\_gpl.asp](http://trendnet.com/downloads/list_gpl.asp)) в течение, как минимум, трех лет со дня поставки продукта.

Кроме того, исходный код можно запросить по адресу TRENDnet.

20675 Manhattan Place, Torrance, CA 90501, USA. Tel: +1-310-961-5500 Fax: +1-310-961-5511

## GPL/LGPL informações Gerais

Este produto TRENDnet inclui software gratuito desenvolvido por terceiros. Estes códigos estão sujeitos ao GPL (GNU General Public License) ou ao LGPL (GNU Lesser General Public License). Estes códigos são distribuídos SEM GARANTIA e estão sujeitos aos direitos autorais dos desenvolvedores. TRENDnet não presta suporte técnico a estes códigos. Os detalhes do GNU GPL e do LGPL estão no CD-ROM do produto.

Favor acessar <http://www.gnu.org/licenses/gpl.txt> ou <http://www.gnu.org/licenses/lgpl.txt> para os termos específicos de cada licença.

Os códigos fonte estão disponíveis para download no site da TRENDnet ([http://trendnet.com/langen/downloads/list\\_gpl.asp](http://trendnet.com/langen/downloads/list_gpl.asp)) por pelo menos três anos da data de embarque do produto.

Você também pode solicitar os códigos fonte contactando TRENDnet, 20675 Manhattan Place, Torrance, CA 90501, USA. Tel: +1-310-961-5500, Fax: +1-310-961-5511.

## GPL/LGPL üldinformatsioon

See TRENDneti toode sisaldab vaba tarkvara, mis on kirjutatud kolmanda osapoole poolt. Koodid on allutatud GNU (General Public License) Üldise Avaliku Litsentsi (GPL) või GNU (Lesser General Public License) ("LGPL") Vähem Üldine Avalik Litsentsiga. Koode vahendatakse ILMA GARANTIITA ja need on allutatud arendajate poolt. TRENDnet ei anna koodidele tehnilist tuge. Detailsemat infot GNU GPL ja LGPL kohta leiate toote CD-ROMil. Infot mõlema litsentsi spetsiifiliste terminite kohta leiate (<http://www.gnu.org/licenses/gpl.txt>) või (<http://www.gnu.org/licenses/lgpl.txt>).

Infot mõlema litsentsi spetsiifiliste terminite kohta leiate (<http://www.gnu.org/licenses/gpl.txt>) või (<http://www.gnu.org/licenses/lgpl.txt>). Lähtekoodi on võimalik alla laadida TRENDneti kodulehelt ([http://trendnet.com/langen/downloads/list\\_gpl.asp](http://trendnet.com/langen/downloads/list_gpl.asp)) kolme aasta jooksul alates toote kättesaamise kuupäevast.

Samuti võite lähtekoodi paluda TRENDneti'lt, 20675 Manhattan Place, Torrance, CA 90501, USA. Tel: +1-310-961-5500, Fax: +1-310-961-5511.

## Certifications

This equipment has been tested and found to comply with FCC and CE Rules.

Operation is subject to the following two conditions:

- (1) This device may not cause harmful interference.
- (2) This device must accept any interference received. Including interference that may cause undesired operation.



Waste electrical and electronic products must not be disposed of with household waste. Please recycle where facilities exist. Check with your Local Authority or Retailer for recycling advice.



**NOTE:** THE MANUFACTURER IS NOT RESPONSIBLE FOR ANY RADIO OR TV INTERFERENCE CAUSED BY UNAUTHORIZED MODIFICATIONS TO THIS EQUIPMENT. SUCH MODIFICATIONS COULD VOID THE USER'S AUTHORITY TO OPERATE THE EQUIPMENT.

## ADVERTENCIA

En todos nuestros equipos se mencionan claramente las características del adaptador de alimentación necesario para su funcionamiento. El uso de un adaptador distinto al mencionado puede producir daños físicos y/o daños al equipo conectado. El adaptador de alimentación debe operar con voltaje y frecuencia de la energía eléctrica domiciliar existente en el país o zona de instalación.



## Product Warranty Registration

Please take a moment to register your product online.  
Go to TRENDnet's website at <http://www.trendnet.com/register>