



Quick Installation Guide  

TEW-638APB
3.02

Table of Contents

English	1
1. Before You Start	1
2. Hardware Installation	2



Package Contents

- TEW-638APB
- Multi-Language Quick Installation Guide
- CD-ROM (Utility and User's Guide)
- Power Adapter (12V DC, 0.5A)
- Network Cable (0.6m / 2ft.)

System Requirements

- Web Browser: Internet Explorer (6 or higher), Firefox 2.0 or higher, Opera, Chrome, Safari
- A computer with a network adapter or wireless adapter properly installed
- A router with an available network LAN port
- An available DHCP Server – routers usually have a built-in DHCP server

2. Hardware Installation

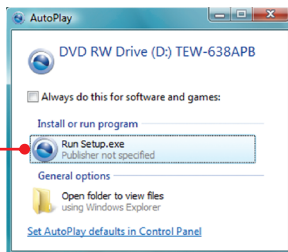
Note:

1. Locate an optimum location for the Access Point. The best place for the Access Point is usually at the center of your wireless network.
2. Disable any anti-virus and firewall programs before starting hardware installation.

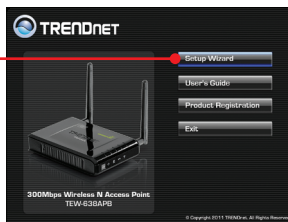
For Windows Users

1. Insert Utility CD-ROM into your computer's CD-ROM drive.

2. Click **Run Setup.exe**. (Windows 7/Vista only)



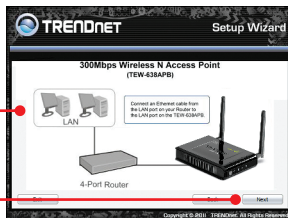
3. Click **Setup Wizard**.



4. Click **I accept the terms in the License Agreement** and then click **Next**.



5. Connect the provided network cable from a LAN port on your Router to the LAN port on the TEW-638APB. Then click **Next**.

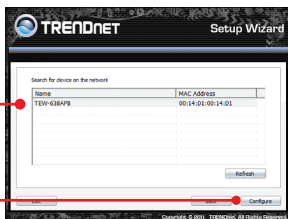


6. Connect a network cable from a LAN port on your Router to the Ethernet port on your computer.

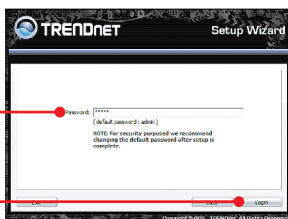
7. Connect the Power Adapter to the Access Point and then to a power outlet. Then click **Next**.



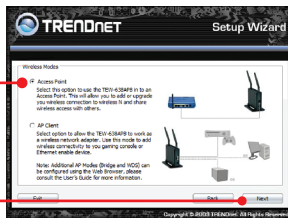
8. Select the TEW-638APB from the list and then click **Configure**.



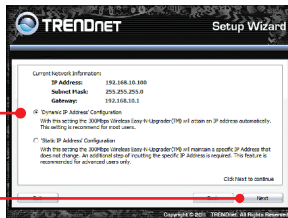
9. Enter a password and then click **Login**. The default password is **admin**.



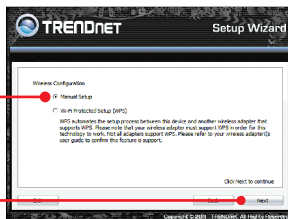
10. Select **Access Point** and then click **Next**.
Note: For AP Client setup, please refer to the User's Guide for step by step instructions. The User's Guide can be found on this product's CD-ROM.



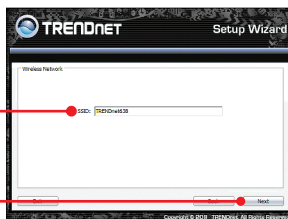
11. Select **Dynamic IP Address Configuration** and then click **Configure**.



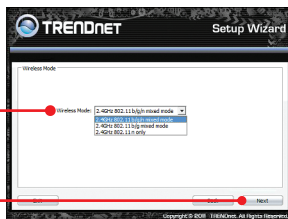
12. Select **Manual setup** and then click **Next**.



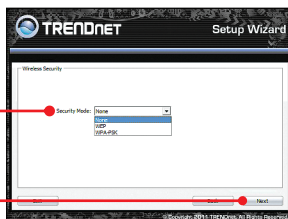
13. Enter a SSID and then click **Next**. By default, the SSID is **TRENDnet638**. Enter a SSID (Wireless Network Name) and then click Next. By default, the SSID is TRENDnet638. The SSID is the wireless network name of your wireless network (e.g. wireless router or access point). Enter a unique SSID. Choose something that you would easily identify when searching for available wireless networks.



14. Select the desired **Wireless Mode** and then click **Next**.



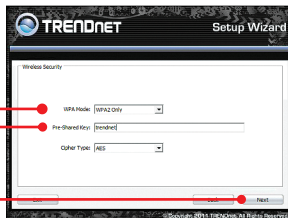
15. Select a Security Mode and then click **Next**.



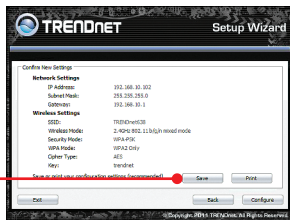
Note:

1. To protect your network from any unauthorized access it is recommended to enable wireless encryption.
2. The example below is for WPA2-PSK (AES) security. If you select WPA-PSK or WPA2-PSK, make sure your wireless adapters support WPA or WPA2. If your wireless adapters do not support WPA or WPA2, then select WEP.
3. WEP encryption only supports 802.11b/g speed of up to 54Mbps.
4. Once encryption is enabled on the router, each wireless computer and device must be configured with the same encryption key.

16. Select the desired **WPA** mode, enter characters for your Pre-Shared key and then click **Next**. For WPA-PSK or WPA2-PSK, the Pre-Shared Key must be between 8 and 63 ASCII or 64 HEX characters. Make sure to copy down the Pre-Shared Key. You will need the Pre-Shared Key when you configure your wireless adapter(s).



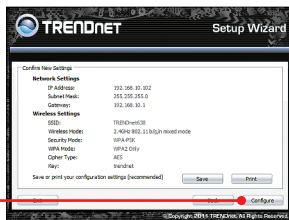
17. Click **Save** (optional). This saves your configuration settings in a file, which can be reloaded when needed.



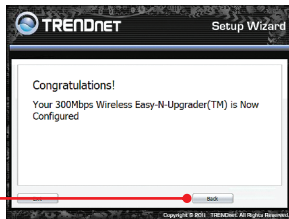
18. Give the file a name, then click **Save**.



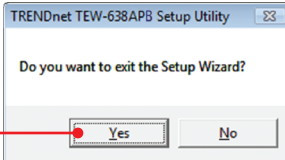
19. Click **Configure** to apply the settings.



20. Click **Exit**.



21. Click **Yes** to exit.



22. Connect the 2dBi detachable antennas to the TEW-638APB.



Note: To connect a wireless computer to the TEW-638APB, please refer to the first question in the troubleshooting section.

Your Installation is complete

For detailed information regarding the **TEW-638APB**'s configuration and advanced settings, please refer to the Troubleshooting section, User's Guide on the Utility CD-ROM, or TRENDnet's website at <http://www.trendnet.com>.

Register Your Product

To ensure the highest level of customer service and support, please take a moment to register your product Online at: **www.trendnet.com/register**

Thank you for choosing TRENDnet

Declaration of Conformity

TRENDnet®

Manufacturer's Name and Address

TRENDnet, Inc.
20675 Manhattan Place
Torrance, CA 90501 USA

Zwolsestraat 156 2587 WB
The Hague The Netherlands



Product Information:

Model Number: TEW-638APB
Product Name: N300 Wireless Access Point
Trade Name: TRENDnet

TRENDnet hereby declare that the product is in compliance with the essential requirements and other relevant provisions under our sole responsibility.

EMC:

ETSI EN 301 489-17 V2.2.1	2012-09	
ETSI EN 301 489-1 V1.9.2	2011-09	
EN 55022: 2010/AC:	2011	
EN 55024:	2010	
EN 61000-3-2:	2014	
EN 61000-3-3:	2013	IEC 61000-4-2: 2008
EN 61000-4-2:	2009	IEC 61000-4-3: 2006 + A1: 2007+ A2: 2010
EN 61000-4-3: 2006 + A1:	2008 + A2: 2010	IEC 61000-4-4: 2012
EN 61000-4-4:	2012	IEC 61000-4-5: 2005
EN 61000-4-5:	2006	IEC 61000-4-6: 2008
EN 61000-4-6:	2009	IEC 61000-4-8: 2009
EN 61000-4-11:	2004	IEC 61000-4-11: 2004
EN 60950-1: 2006 + A11:	2009 + A1: 2010 + A12: 2011 + A2: 2013	
IEC 60950-1: 2005 (2nd Edition) + Am 1:	2009 + Am 2: 2013	

This product is herewith confirmed to comply with the Directives.

Directives:

Directive 2014/53/EU
Directive CEM 2004/108/EC et 2014/30/EU
Directive RoHS 2011/65/EU
REACH Règlement (CE) N° 1907/2006

Person responsible for this declaration.
Place of Issue: Torrance, California, USA
Date: April 04, 2017
Name: Sonny Su
Title: Director of Technology
Signature:



Certifications

This device complies with Part 15 of the FCC Rules.

Operation is subject to the following two conditions:

- (1) This device may not cause harmful interference.
- (2) This device must accept any interference received.

Including interference that may cause undesired operation.



Waste electrical and electronic products must not be disposed of with household waste. Please recycle where facilities exist. Check with your Local Authority or Retailer for recycling advice.

Applies to PoE Products Only: This product is to be connected only to PoE networks without routing to the outside plant.

Note

The Manufacturer is not responsible for any radio or TV interference caused by unauthorized modifications to this equipment. Such modifications could void the user's authority to operate the equipment.

Advertencia

En todos nuestros equipos se mencionan claramente las características del adaptador de alimentación necesario para su funcionamiento. El uso de un adaptador distinto al mencionado puede producir daños físicos y/o daños al equipo conectado. El adaptador de alimentación debe operar con voltaje y frecuencia de la energía eléctrica domiciliar existente en el país o zona de instalación.

Technical Support

If you have any questions regarding the product installation, please contact our Technical Support.

Toll free US/Canada: **1-866-845-3673**

Regional phone numbers available at www.trendnet.com/support

Product Warranty Registration

Please take a moment to register your product online. Go to TRENDnet's website at:

www.trendnet.com/register

TRENDnet

20675 Manhattan Place
Torrance, CA 90501
USA



Product Warranty Registration

Please take a moment to register your product online.
Go to TRENDnet's website at <http://www.trendnet.com/register>