

# TEW-504UB

**108Mbps 802.11a/g Wireless USB 2.0 Adapter  
Quick Installation Guide**

**Adaptateur USB 2.0 sans fil 108Mbps 802.11a/g  
Guide d'installation rapide**

**Drahtloser 108 MBit/s 802.11a/g USB-2.0-Adapter  
Kurzanleitung zur Installation**

**Adaptador USB 2.0 inalámbrico 802.11a/g a 108Mbps  
Guía de instalación rápida**

**Адаптер 108 Мбит/сек 802.11a/g USB 2.0 для беспроводных соединений  
Руководство по быстрой установке**

**Version 06.20.2005**



**TRENDnet**<sup>®</sup>  
TRENDware, USA  
**What's Next in Networking**

# Table of Contents

English .....	1
1. Prepare for Installation .....	1
2. Install Hardware .....	2
3. Install Wireless Configuration Utility .....	3
4. Install Drivers .....	6
5. Wireless Configuration .....	7
Troubleshooting .....	8

# English QIG

## 1. Prepare for Installation

Thank you for purchasing the TEW-504UB. Your new 108Mbps 802.11a/g Wireless USB 2.0 Adapter will allow you to connect to 802.11a, 802.11g or 802.11b networks and begin wirelessly sharing the Internet, files, and other resources.

This guide will help you set up and configure your Wireless USB Adapter. Following this installation should be quick and easy. If you run into problems, please refer to the Troubleshooting section or the more detailed installation procedures on the User's Guide CD-ROM. If you need further technical

### Verify Package Contents

Please make sure you have everything in the box:



### Minimum Hardware Requirements

Before installing this 802.11a/g Wireless USB Adapter, you should have:

1. USB enabled computer
2. 300 MHz processor and 32 MB of memory (Recommended)
3. CD-ROM drive
4. 802.11a, 802.11g or 802.11b Access Point (for Infrastructure Mode) or another 802.11g wireless adapter (for Ad-Hoc/Peer-to-Peer networking mode).

## 2. Install Hardware

**Note:** Do not connect the Wireless USB Adapter to your computer until you have finished installing the Utility and Driver.

The TEW-504UB is hot-pluggable. You can connect or disconnect the TEW-504UB while the computer is on.

Connect the TEW-504UB Wireless USB Adapter to your computer's USB port.

**Note:** You can use the included USB extension cable for your convenience to extend the cable connection between your computer and the TEW-504UB.



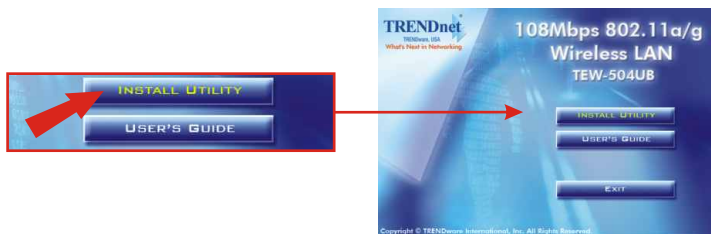
# 3. Install Wireless Configuration Utility

## Windows 98SE/ME/2000/XP

1. Insert the TEW-504UB CD-ROM into your computer's CD-ROM drive; the installation menu window will appear automatically. If the window does not appear automatically, click **Start**, click **Run**, and type **E:\Autorun.exe** in the text-field. Click **OK**.

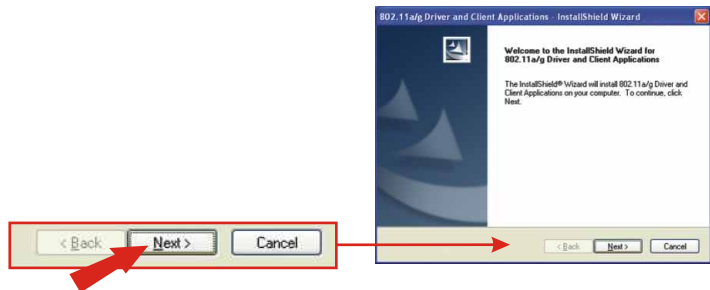
**Note:** Replace "E" in "E:\Autorun.exe" with whichever letter is assigned to your CD-ROM drive.

2. On the Installation Menu, click **Install Utility**.

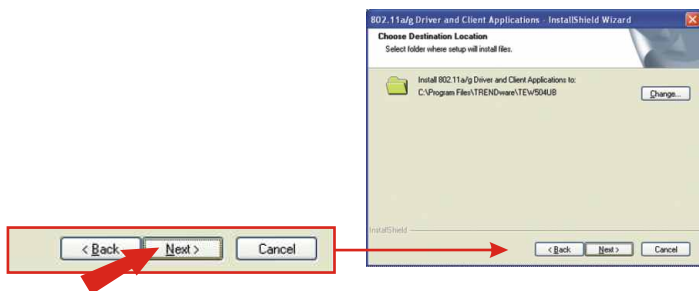


3. Follow the Install Shield Wizard's instructions to install the wireless configuration utility.

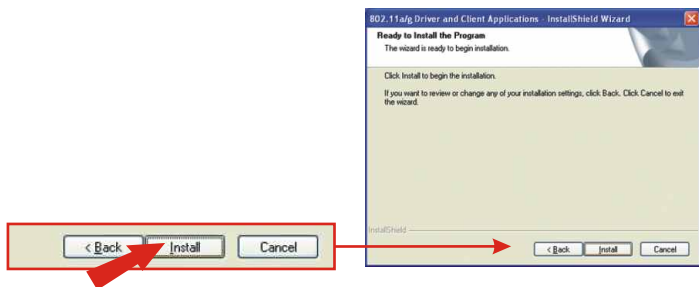
4. Click **Next**.



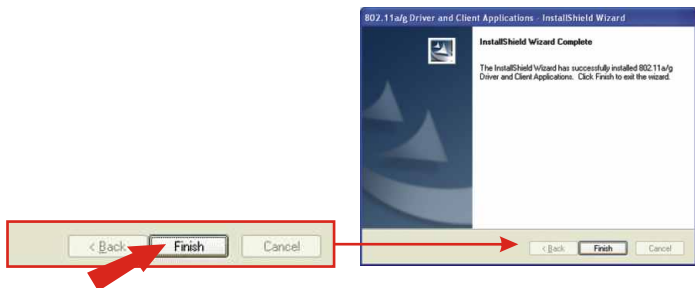
## 5. Click Next.



## 6. Click Install.



7. Click **Finish**.



8. On the Installation Menu, click **Exit**.

**Note:** For Windows 98/ME, manually restart your computer.

## 4. Install Drivers

### Windows 98SE/ME/2000/XP

1. After installing the utility software, connect the Wireless USB Adapter to your computer's USB port. Windows will detect new hardware and load the driver automatically.

Congratulations!  
Installation is now complete.

**Note:** After driver installation is complete, the wireless icon will appear in your system tray (next to the clock on the bottom right corner of your screen). If it does not appear, restart your computer. **Go to section 5 Wireless Configuration.**

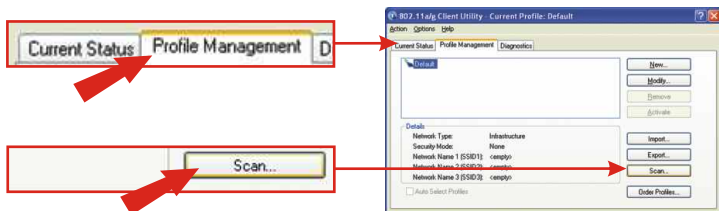


# 5. Wireless Configuration

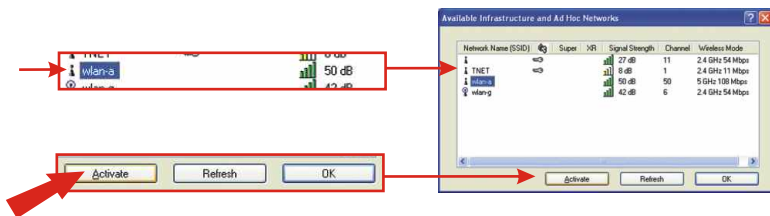
1. Double click the wireless icon on your desktop.



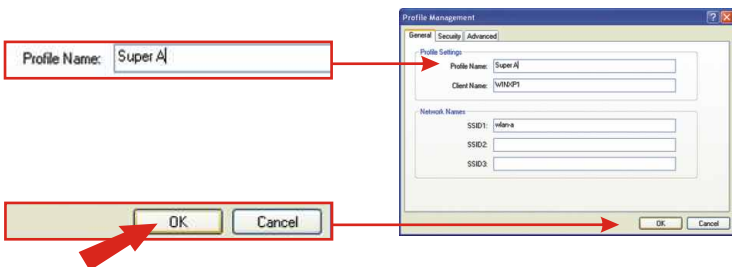
2. Click **Profile Management** and click **Scan**.



3. Select your wireless network's **SSID** and click **Activate**.



4. Type a **Profile Name** for the Access Point you selected and click **OK**.



# Troubleshooting

**Q1: I completed all the steps in the quick installation guide, but my wireless USB Adapter isn't connecting to my access point. What should I do?**

**A1:** First, you should verify that the Network SSID matches your wireless router or access point's SSID. Second, you should check your TCP/IP properties to ensure that Obtain an IP address automatically is selected. Third, you can click on the Site Survey link to check and see if there are any available wireless networks listed.

**Q2: Windows is unable to recognize my hardware. What should I do?**

**A2:** Make sure your computer meets the minimum requirements as specified in Section 1 of this quick installation guide. Also, you must install the wireless configuration utility (as described in Section 3) before connecting the wireless USB Adapter.

**Q3: I cannot open the wireless configuration utility. What should I do?**

**A3:** Go to your device manager (control panel → system) to make sure the adapter is installed properly. If you see a networking device with a yellow question mark or exclamation point, you will need to reinstall the device and/or the drivers.

If you still encounter problems, please refer to the User's Guide CD-ROM or contact technical support.

## Certifications

This equipment has been tested and found to comply with FCC and CE Rules. Operation is subject to the following two conditions:

- (1) This device may not cause harmful interference.
- (2) This device must accept any interference received.  
Including interference that may cause undesired operation.





**What's Next in Networking**

## Product Warranty Registration

Please take a moment to register your product online.  
Go to TRENDware's website at <http://www.TRENDNET.com>

## TRENDnet Technical Support

### US/Canada Support Center

#### Contact

**Telephone:** 1(310) 626-6252

**Fax:** 1(310) 626-6267

**Email:** [support@trendnet.com](mailto:support@trendnet.com)

#### Tech Support Hours

7:30am - 6:00pm Pacific Standard Time

Monday - Friday

### European Support Center

#### Contact

##### Telephone

Deutsch : +49 (0) 6331 / 268-460

Français : +49 (0) 6331 / 268-461

Español : +49 (0) 6331 / 268-462

English : +49 (0) 6331 / 268-463

Italiano : +49 (0) 6331 / 268-464

Dutch : +49 (0) 6331 / 268-465

**Fax:** +49 (0) 6331 / 268-466

#### Tech Support Hours

8:00am - 6:00pm Middle European Time

Monday - Friday

**TRENDware International, Inc.**  
3135 Kashiwa Street. Torrance, CA 90505  
**<http://www.TRENDNET.com>**