

# TEW-501PC TEW-503PI

Lühike paigaldusjuhend

Version 10.12.2005



**TRENDnet**

# Sisukord

Eesti .....	1
1. Paigalduseks valmistumine .....	1
2. WiFi seadistusprogrammi paigaldamine .....	3
3. Riistvara paigaldamine .....	5
4. Draiverite paigaldamine .....	6
5. WiFi seadistamine .....	8
Troubleshooting .....	10

## 1. Paigalduseks valmistumine

Täname sind TTEW-501PC/TEW-503PI ostmise eest. Oma uue 108Mbps 802.11a/g WiFi adapteri abil saad luua ühenduse 802.11a, 802.11g või 802.11b võrguga ja jagada WiFi võrgus internetiühendust, faile ja teisi resursse. See juhend aitab sind WiFi adapteri paigaldamisel ja seadistamisel. Juhendi järgimine peaks olema kiire ja lihtne. Kui sul tekib probleeme, loe palun „Probleemide lahendamise“ peatükki või pikemaid paigaldusjuhendeid Kasutaja käsiraamatust CD-plaadil (inglise keeles). Kui sa vajad täiendavat tehnilist tuge, mine palun aadressile [www.trendnet.com](http://www.trendnet.com) või võta ühendust tehnilise toega telefoni teel.

### Kontrolli pakendi sisu

Veendu palun, et karpis on kõik osad:

#### TEW-501PC



#### TEW-503PI



## **Kontrolli seadmeid**

Enne selle PCI kaardi või PC kaardi paigaldamist peaks sul olema:

1. Arvuti vaba 32-bitise, 3,3V CardBus pesaga (TEW-501PC) või 32-bitise PCI
2. 1/2.2 pesaga (TEW-503PI)
2. 300 MHz protsessor ja 32 MB mälu (soovitav)
3. CD-seade
4. Paigaldatud CardBus kontrolleri (ainult TEW-501PC)
5. 802.11a/802.11g/802.11b accesspoint (kasutamiseks infrastruktuuri režiimil) või teine 802.11a/802.11g/802.11b WiFi adapter (kasutamiseks Ad-Hoc/võrdsete sõlmedega võrgus)

**Oluline!** ÄRA ühenda PCI adapterit või PC kaarti arvutisse enne, kui sul seda teha palutakse. Palun järgi enne adapteri paigaldamist 2. peatükis toodud juhiseid.

**Märkus:** Euroopa WiFi regulatsioonide tõttu ei ole Super A režiim EL versioonis toetatud.

## 2. WiFi seadistusprogrammi paigaldamine

### Windows 2000/XP SP2

1. Sisesta TEW-501PC/503PI CD-plaat oma arvuti CD-seadmesse; paigaldusmenüü avaneb automaatselt. Kui aken ei avane automaatselt, kliki **Start**, vali **Run** ja sisesta tekstiväljale **E:\Autorun.exe**. Kliki **OK**.

**Märkus:** asenda näites toodud „E“ oma CD-seadet tähistava tähega (tihti „D“).

2. Kliki paigaldusmenüüs **Install Utility**.



3. WiFi seadistusprogrammi paigaldamiseks järgi InstallShield viisardi juhiseid.



4. Kliki **Finish** ja lülita arvuti riistvara paigaldamiseks välja.



### 3. Riistvara paigaldamine

#### **Kui sa paigaldad 501PC WiFi PC kaarti:**

*Jätka ainult juhul, kui oled läbinud 2. peatükis toodud juhised.*

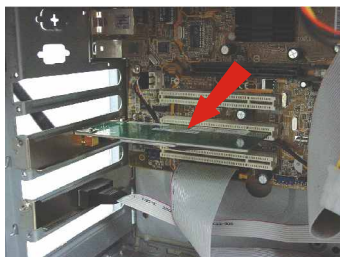
1. Lülita arvuti välja.
2. Sisesta PC kaart kindlalt sülearvuti vabasse PC kaardi pesasse. Pesast peaks ulatuma välja ainult kaardi plastist ots.
3. Taaskäivita arvuti.



#### **Kui sa paigaldad 503PI WiFi PCI kaarti:**

*Jätka ainult juhul, kui oled läbinud 2. peatükis toodud juhised.*

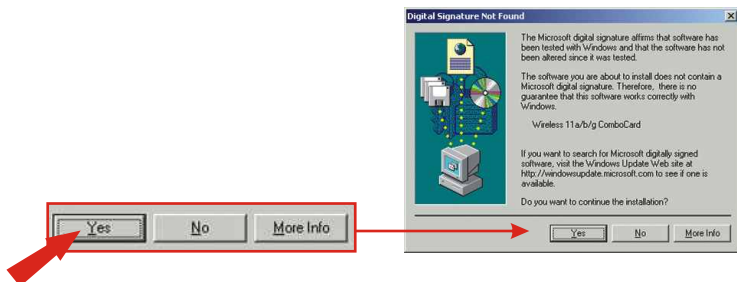
1. Lülita arvuti välja.
2. Ava arvuti korpuse, et paljastuksid emaplaat ja laienduspesad (kui vajad abi korpuse avamisel, loe juhiseid oma arvuti käsiraamatust).
3. Sisesta WiFi kaart vabasse PCI pesasse emaplaadil. Suru kaarti kindlalt ja ühtlaselt, kuni ta klõpsab oma kohale.
4. Kinnita kaardi metallklamber korpuse külge tavalise korpusekruviga. Ühenda komplekti kuuluv antenn kaardi tagaosas olevasse pistikusse.
5. Sulge arvuti korpuse ja taaskäivita arvuti.



# 4. Draiverite paigaldamine

## Windows 2000

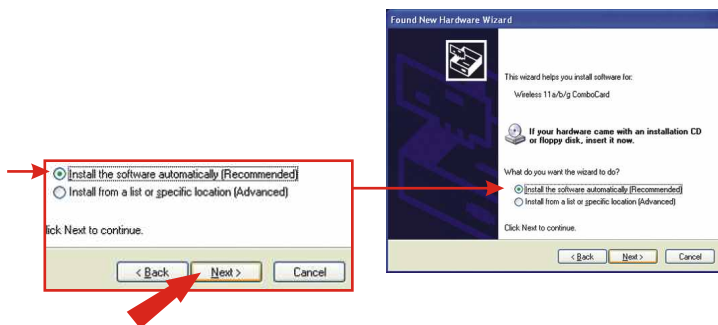
1. Peale arvuti taaskäivitamist teavitab avanev teade sind, et paigaldatavatel draiveritel puudub digiallkiri, ja küsib jätkamiseks kinnitust. Kliki **Yes**.



2. WiFi kaardi seadistamiseks jätkka käesoleva juhendi 5. peatükist.

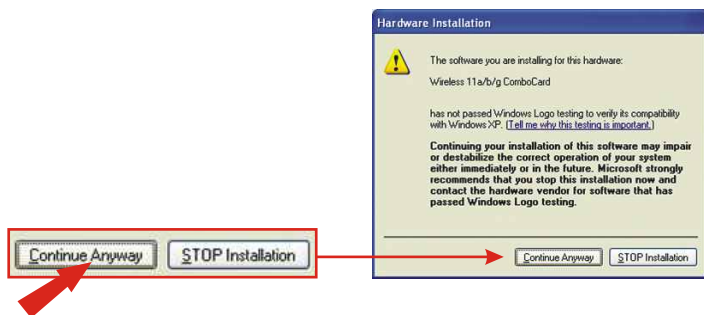
## Windows XP

1. Peale arvuti taaskäivitamist ilmub "Found New Hardware" viisard. Vali **Install the software automatically** ja kliki **Next**.





2. Ahoitusteade üteb, et seade, mida paigaldad, ei ole veel Windows XP ühilduvuse osas sertifitseeritud. Kliki **Continue Anyway**.



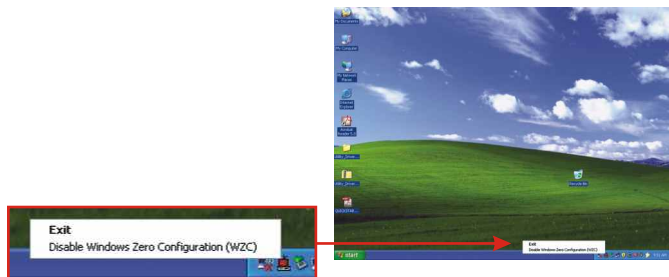
3. Kliki **Finish**.



WiFi kaardi seadistamiseks jätkka käesoleva juhendi 5. peatükist.

## 5. WiFi seadistamine

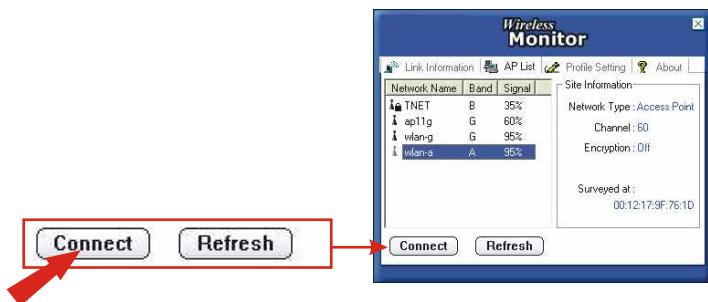
1. Kui kasutad Windows XP-d, lülita enne 2. sammuga jätkamist välja Windowsi **Wireless Zero Configuration**. Paremkliki WiFi monitori ikooni ekraani paremas alumises nurgas ja vali Disable **Windows Zero Configuration**.



2. DTopeltkliki WiFi ikooni süsteemisalves (kella kõrval ekraani paremas alumises nurgas).



3. Kliki **AP List** sakil, vali SSID, millega soovid ühendust luua, ja kliki **Connect**.



4. Kliki **Link Information** sakil ja veendu, et oled ühenduses internetiga.



5. TEW-501PC/503PI võtab raadiovõrgu kaudu ühendust sinu accesspointiga. Kui accesspoint on seadistatud turvarežiimile, loe palun turvaseadistuste kohta käsiraamatust CD-plaadil.

# Troubleshooting

**Q1: I completed all the steps in the quick installation guide, but my card isn't connecting to my access point. What should I do?**

**A1:** You should first verify that the Network card's SSID matches your wireless router or access point's SSID. If they already match, you should check your TCP/IP properties to ensure that **Obtain an IP address automatically** is selected. Refer to your Windows User's Manual if you are unable to locate your TCP/IP properties.

**Q2: Windows is unable to recognize my hardware. What should I do?**

**A2:** Make sure your computer meets the minimum requirements as specified in Section 1 of this quick installation guide. Also, you must install the wireless configuration utility (as described in Section 2) BEFORE you physically install your network card. Lastly, you may consider moving the card to a different PCI/PC Card Slot.

**Q3: I cannot open the wireless configuration utility. What should I do?**

**A3:** Go to your device manager (control panel > system) to make sure the adapter is installed properly. If you see a networking device with a yellow question mark or exclamation point, you will need to reinstall the device and/or the drivers.

If you still encounter problems, please refer to the User's Guide CD-ROM or contact technical support.

## Certifications

This equipment has been tested and found to comply with FCC and CE Rules. Operation is subject to the following two conditions:

- (1) This device may not cause harmful interference.
- (2) This device must accept any interference received.  
Including interference that may cause undesired operation.

**NOTE:** THE MANUFACTURER IS NOT RESPONSIBLE FOR ANY RADIO OR TV INTERFERENCE CAUSED BY UNAUTHORIZED MODIFICATIONS TO THIS EQUIPMENT. SUCH MODIFICATIONS COULD VOID THE USER'S AUTHORITY TO OPERATE THE EQUIPMENT.



### **Federal Communication Commission Interference Statement**

This equipment has been tested and found to comply with the limits for a Class B digital device, pursuant to Part 15 of the FCC Rules. These limits are designed to provide reasonable protection against harmful interference in a residential installation. This equipment generates, uses and can radiate radio frequency energy and, if not installed and used in accordance with the instructions, may cause harmful interference to radio communications. However, there is no guarantee that interference will not occur in a particular installation. If this equipment does cause harmful interference to radio or television reception, which can be determined by turning the equipment off and on, the user is encouraged to try to correct the interference by one of the following measures:

- Reorient or relocate the receiving antenna.
- Increase the separation between the equipment and receiver.
- Connect the equipment into an outlet on a circuit different from that to which the receiver is connected.
- Consult the dealer or an experienced radio/TV technician for help.

This device complies with Part 15 of the FCC Rules. Operation is subject to the following two conditions: (1) This device may not cause harmful interference, and (2) this device must accept any interference received, including interference that may cause undesired operation.

FCC Caution: Any changes or modifications not expressly approved by the party responsible for compliance could void the user's authority to operate this equipment.

### **IMPORTANT NOTE:**

FCC Radiation Exposure Statement:

This equipment complies with FCC radiation exposure limits set forth for an uncontrolled environment. This equipment should be installed and operated with minimum distance 20cm between the radiator & your body.

If this device is going to be operated in 5.15 ~ 5.25GHz frequency range, then it is restricted in indoor environment only.

This transmitter must not be co-located or operating in conjunction with any other antenna or transmitter.

TRENDware declares that TEW-501PC and TEW-503PI ( FCC ID: RYK-WL711A and RYK-WL760A ) are limited in CH1~CH11 for 2.4 GHz by specified firmware controlled in U.S.A.



# TRENDnet

## Product Warranty Registration

Please take a moment to register your product online.  
Go to TRENDnet's website at <http://www.TRENDNET.com>

## TRENDnet Technical Support

### US/Canada Support Center

#### Contact

**Telephone:** 1(888) 777-1550

**Fax:** 1(310) 626-6267

**Email:** [support@trendnet.com](mailto:support@trendnet.com)

#### Tech Support Hours

7:30am - 6:00pm Pacific Standard Time

Monday - Friday

### European Support Center

#### Contact

##### Telephone

Deutsch : +49 (0) 6331 / 268-460

Français : +49 (0) 6331 / 268-461

0800-907-161 (numéro vert)

Español : +49 (0) 6331 / 268-462

English : +49 (0) 6331 / 268-463

Italiano : +49 (0) 6331 / 268-464

Dutch : +49 (0) 6331 / 268-465

Eesti : +372-6593613 (9.00AM to 5:00PM)

**Fax:** +49 (0) 6331 / 268-466

#### Tech Support Hours

8:00am - 6:00pm Middle European Time

Monday - Friday

**TRENDnet**

3135 Kashiwa Street. Torrance, CA 90505

<http://www.TRENDNET.com>