



Quick Installation Guide



TEW-450APB

Table of Contents

English	1
1. Before You Start	1
2. Install Hardware	2
3. Configure the Access Point	3
Troubleshooting	6

1. Before You Start



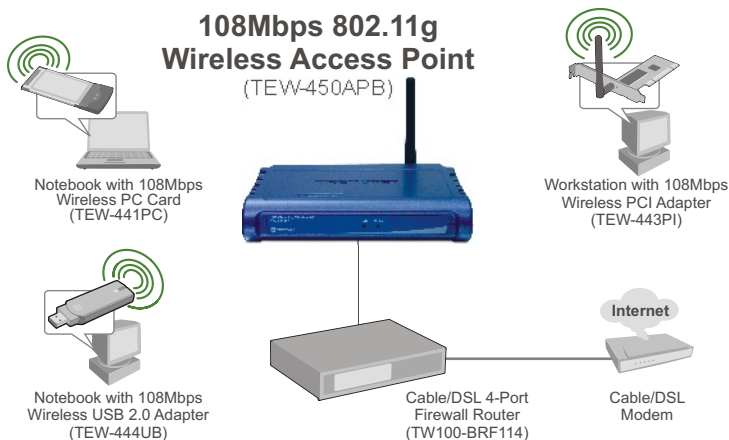
Package Content

- TEW-450APB
- Quick Installation Guide
- External Power Adapter
- User's Guide CD-ROM
- 1 x 2dBi Detachable Antenna

Installation Requirements

- A web browser such as Internet Explorer (5.5 or higher) or Netscape Navigator (4.7 or higher).
- A computer with a network adapter properly installed.
- A network Switch or Hub with an available network LAN port.
- A RJ-45 network cable.

Application



2. Install Hardware

Note: Locate an optimum location for the Access Point. The best place for the Access Point is usually at the center of your wireless network. Please connect the computer configuring the TEW-450APB to the same switch/hub.

1. Connect a RJ-45 cable from the Switch/Hub to the **LAN** port of the Access Point and then connect the 2dBi Detachable Antenna.



2. Connect the AC Power Adapter to the Access Point and then to a power outlet.



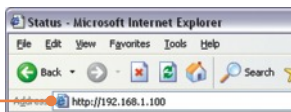
3. Verify that the following front panel lights are on: **LAN** and **WLAN**.

3. Configure the Access Point

Note: It is recommended that you configure the Access Point from a wired computer. Before the Access Point can be configured, a Static IP address must be assigned to your computer's network adapter in the subnet of 192.168.1.x. Since the Access Point's default IP address is 192.168.1.100, make sure no other network devices are assigned an IP address of 192.168.1.100. (Refer to the Troubleshooting section on how to configure TCP/IP settings on your PC)

For a Wired Computer

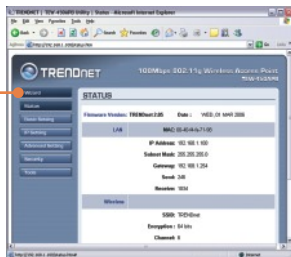
1. Open your web browser, type **http://192.168.1.100** in the Address bar, and press **Enter**.



2. Enter User name and Password, and then click **OK**. By default, User name: **admin**
Password: **admin**



3. Click **Wizard**.



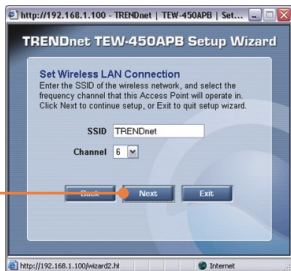
4. Click **Next**.



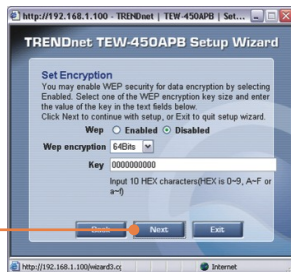
5. Enter a new password for your Access Point, verify the new password, and then click **Next**. (If a new password is not entered, the default password **admin** will be used.



6. Enter a SSID for your Access Point and then click **Next**.



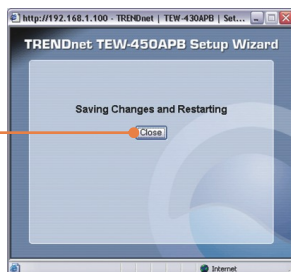
7. Enable Encryption if needed and then click **Next**.



8. Click **Restart**.



9. Click **Close**.

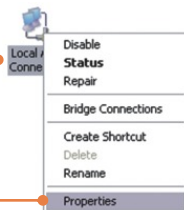


Your installation is now complete.

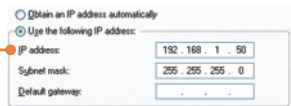
For detailed information regarding the TEW-450APB's configuration and advanced settings, please refer to the Troubleshooting section, User's Guide CD-ROM, or Trendnet's website at <http://www.trendnet.com>.

Q1: How do I configure TCP/IP settings on my computer?

1. Go into the **Control Panel** and double-click the **Network Connections** icon, right-click the **Local Area Connection** icon and then click **Properties**.



2. Click **Internet Protocol (TCP/IP)** and then click **Properties**. Then click on **Use the following IP address**, and make sure you assign your network adapter an IP address in the subnet of 192.168.1.x.



Q2: I specified the IP address `http://192.168.1.100` in my Internet Browser's Address Bar, but an error message says "The page cannot be displayed". How can I get into the TEW-450APB's web configuration page?

A2: First, check your hardware settings again by following the instructions in section 2. Second, make sure the LAN and WLAN lights are lit. Third, make sure the TCP/IP settings are configured properly (see Q1). Fourth, since the Access Point's default IP address is 192.168.1.100, make sure that no other network devices are assigned an IP address of 192.168.1.100.

Q3: If my network's IP is different than the Access Point's range, what should I do?

A3: You should still configure the Access Point first. After all the settings are applied, go to the Access Point's configuration page, click on TCP/IP settings and change the IP address of the Access Point to match your network's IP.

Q4: After I successfully configured the Access Point to meet my network settings, I can not connect to my network using wireless computers.

A4: If you have a DHCP server in your network, you need to go into TCP/IP settings again and re-select "Obtain an IP address automatically" to allow the PC to regain an IP address from your DHCP server.

Q5: All the settings are correct, but I can not make a wireless connection to the Access Point.

A5: First, double check that the WLAN light on the Access Point is lit. Second, power cycle the Access Point by unplugging the power to the Access Point. Wait 15 seconds, then plug the power back in. Third, contact the manufacturer of your wireless network adapter. Make sure the wireless network adapter is configured with the proper SSID. The default SSID of the Access Point is **TRENDnet**.

If you still encounter problems or have any questions regarding the **TEW-450APB**, please contact TRENDnet's Technical Support Department.

Certifications

This equipment has been tested and found to comply with FCC and CE Rules.

Operation is subject to the following two conditions:

- (1) This device may not cause harmful interference.
- (2) This device must accept any interference received. Including interference that may cause undesired operation.



Este equipamento opera em caráter secundário, isto é, não tem direito a proteção contra interferência prejudicial, mesmo de estações do mesmo tipo, e não pode causar interferência a sistemas operando em caráter primário.

Waste electrical and electronic products must not be disposed of with household waste. Please recycle where facilities exist. Check with you Local Authority or Retailer for recycling advice.



NOTE: THE MANUFACTURER IS NOT RESPONSIBLE FOR ANY RADIO OR TV INTERFERENCE CAUSED BY UNAUTHORIZED MODIFICATIONS TO THIS EQUIPMENT. SUCH MODIFICATIONS COULD VOID THE USER'S AUTHORITY TO OPERATE THE EQUIPMENT.

ADVERTENCIA

En todos nuestros equipos se mencionan claramente las características del adaptador de alimentación necesario para su funcionamiento. El uso de un adaptador distinto al mencionado puede producir daños físicos y/o daños al equipo conectado. El adaptador de alimentación debe operar con voltaje y frecuencia de la energía eléctrica domiciliar existente en el país o zona de instalación.



TRENDnet Technical Support

US • Canada

Toll Free Telephone: 1(866) 845-3673

24/7 Tech Support



Europe (Germany • France • Italy • Spain • Switzerland • UK)

Toll Free Telephone: +00800 60 76 76 67

English/Espanol - 24/7

Francais/Deutsch - 11 am-8pm, Monday - Friday MET

Worldwide

Telephone: +(31) (0) 20 504 05 35

English/Espanol - 24/7

Francais/Deutsch - 11 am-8pm, Monday - Friday MET

Product Warranty Registration

Please take a moment to register your product online.

Go to TRENDnet's website at <http://www.trendnet.com>

TRENDnet[®]
20675 Manhattan Place
Torrance, CA 90501
USA