



Quick Installation Guide



TEW-444UB

Table of Contents

English	1
1. Before You Start	1
2. How to Install	2
3. Wireless Configuration	4
Troubleshooting	6

1. Before You Start



Package Content

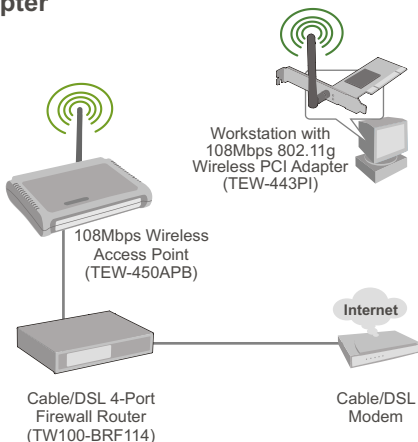
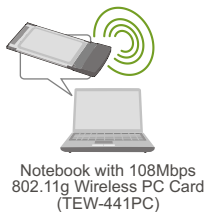
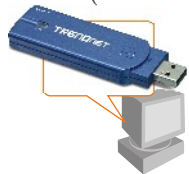
- TEW-444UB
- Utility & Driver CD-ROM
- Quick Installation Guide
- USB 2.0 Extension Cable

System Requirements

- CD-ROM Drive
- Computer with an available USB 1.1 or 2.0 port
- CPU: 300 MHz or above
- Memory: 32MB or above
- Windows 98SE/ME/2000/XP/2003 Server

Application

Workstation with 108Mbps Wireless USB 2.0 Adapter (TEW-444UB)



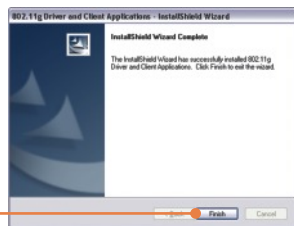
2. How to Install

Important! DO NOT connect the Wireless USB Adapter to your computer until instructed to do so.

1. Insert the **Utility & Driver CD-ROM** into your computer's CD-ROM Drive and then click **Install Utility**.



2. Follow the **InstallShield Wizard** instructions and then click **Finish**.



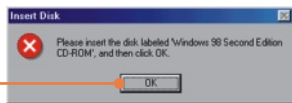
Note: The TEW-444UB is hot-pluggable, you can connect or disconnect the TEW-444UB while the computer is on.

3. Connect the TEW-444UB into your computer's USB port.



Note: Windows 2003 Server/XP/2000/ME/98SE will automatically detect and install the appropriate drivers. Skip to **section 3** for Windows 2003 Server/XP/2000/ME . For Windows 98SE, please insert your Windows 98SE CD-ROM and continue on to **step 4**.

4. Click **OK**.



Your installation is now complete.

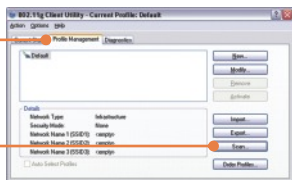
3. Wireless Configuration

Note: Wireless configuration requires a 802.11g or 802.11b Access Point (for Infrastructure Mode) or another 802.11g wireless adapter (for Ad-Hoc/Peer-to-Peer networking mode).

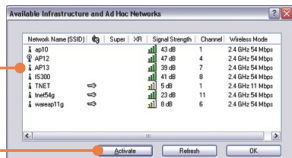
1. Double-click the **Wireless** icon.



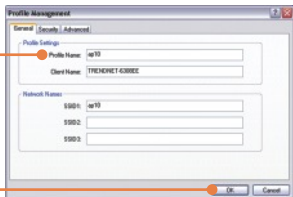
2. Click on **Profile Management**, then click on **Scan**.



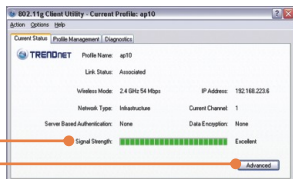
3. Click on the proper **SSID**, and then click on **Activate**.



4. Type in a **Profile Name**, then click on **OK**.



5. Verify that there is signal strength.
The configuration is now complete.



Wireless installation is now complete.

For detailed information regarding the TEW-444UB configuration and advanced settings, please refer to the User's Guide included on the Utility & Driver CD-ROM or TRENDnet's website at www.trendnet.com

Q1: I inserted the Utility & Driver CD-ROM into my computer's CD-ROM Drive and the installation menu does not appear automatically. What should I do?

A1: If the installation menu does not appear automatically, click Start, click Run, and type D:\setup.exe where "D" in "D:\setup.exe" is the letter assigned to your computer's CD-ROM Drive. And then click OK to start the installation.

Q2: When I open up the utility, all the buttons are greyed out.

A2: Verify that the device is installed properly. Right click on **My Computer -> Properties**. Click on **Hardware**, then **Device Manager**. Double click on **Network Adapters**. Make sure that **802.11g Wireless Network Adapter** is listed and there is no yellow question mark or exclamation point. Also perform a reboot on the computer.

Q3: When I click on Scan, I can not see my SSID.

A3: Log on to your wireless router or access point and make sure that the SSID broadcast option is not disabled. Make sure the wireless light on your wireless router or access point is on.

Q4: I completed all the steps in the Quick Installation Guide, but my Wireless USB Adapter isn't connecting to my access point. What should I do?

A4: First, verify that the Network Name (SSID) matches your wireless router or wireless access point's SSID. Second, check your TCP/IP properties to ensure that Obtain an IP address automatically is selected. Third, click **Profile Management -> Scan** in the Wireless Client Utility to check and see if there are any available wireless networks listed. Third, click **Profile Management -> Scan** in the Wireless Client Utility to check and see if there are any available wireless networks listed.

Q5: The utility program shows good signal strength, but I can not get onto the Internet.

A5: First, log on to your wireless router or access point and check to see if encryption is enable. If encryption is enabled, go to **Profile Management -> Modify -> Security**. Select the proper **Security Options**, click on **configure**, then put in the proper **encryption key**. Then click **Ok**. Second, make sure to disable any firewall programs. Third, make sure that your router is properly configured for Internet.

If you still encounter problems or have any questions regarding the TEW-444UB, please refer to the User's Guide included on the Utility CD-ROM or contact TRENDnet's Technical Support Department

Certifications

This equipment has been tested and found to comply with FCC and CE Rules.

Operation is subject to the following two conditions:

- (1) This device may not cause harmful interference.
- (2) This device must accept any interference received. Including interference that may cause undesired operation.



Waste electrical and electronic products must not be disposed of with household waste. Please recycle where facilities exist. Check with you Local Authority or Retailer for recycling advice.



NOTE: THE MANUFACTURER IS NOT RESPONSIBLE FOR ANY RADIO OR TV INTERFERENCE CAUSED BY UNAUTHORIZED MODIFICATIONS TO THIS EQUIPMENT. SUCH MODIFICATIONS COULD VOID THE USER'S AUTHORITY TO OPERATE THE EQUIPMENT.



TRENDnet Technical Support

US • Canada

Toll Free Telephone: 1(866) 845-3673

24/7 Tech Support



Europe (Germany • France • Italy • Spain • Switzerland • UK)

Toll Free Telephone: +00800 60 76 76 67

English/Espanol - 24/7

Francais/Deutsch - 11am-8pm, Monday - Friday MET

Worldwide

Telephone: +(31) (0) 20 504 05 35

English/Espanol - 24/7

Francais/Deutsch - 11am-8pm, Monday - Friday MET

Product Warranty Registration

Please take a moment to register your product online.

Go to TRENDnet's website at <http://www.trendnet.com>

TRENDnet

3135 Kashiwa Street
Torrance, CA 90505
USA