

TEW-229UB

11Mbps 802.11b Wireless USB 2.0 Adapter
Quick Installation Guide

Guide d'installation rapide du
Un adaptateur USB 2.0 LAN sans fil 802.11

Anleitung zur Schnellinstallation des
802.11b Wireless LAN USB 2.0 -Adapter

Guía de Instalación Rápida
Adaptador USB 2.0 LAN inalámbrico 802.11b

Version 07.06.04



TRENDnet[®]
TRENDware, USA
What's Next in Networking

Table of Contents

English	1
1. Prepare for Installation	1
2. Install Wireless Configuration Utility	2
3. Install Hardware & Driver	3
4. Wireless Configuration	7
5. Configure TCP/IP Network Settings	11
Troubleshooting	14

English QIG

1. Prepare for Installation

Thank you for purchasing the TEW-229UB. Your new 802.11b Wireless USB 2.0 Adapter will allow you to connect to 802.11b-compliant wireless networks and begin wirelessly sharing the Internet, files, and other resources.

This guide will help you set up and configure your Wireless USB Adapter. Following this installation should be quick and easy. If you run into problems, please refer to the Troubleshooting section or the more detailed installation procedures on the User's Guide CD-ROM. If you need further technical support, please visit www.TRENDNET.com or call by phone.

Verify Package Contents

Please make sure you have everything in the box:



Verify Equipment

Before installing this 802.11b Wireless USB 2.0 Adapter, you should have a:

1. USB-enabled computer
2. 300 MHz processor and 32 MB of memory (Recommended)
3. CD-ROM drive
4. 802.11b or 802.11g Access Point (for Infrastructure Mode) or another 802.11b wireless adapter (for Ad-Hoc/Peer-to-Peer networking mode).

2. Install Wireless Configuration Utility

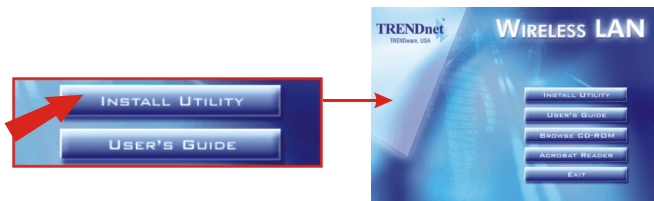
NOTE: Do not connect the Wireless USB Adapter to your computer until you've installed this Utility.

Windows 98SE/ME/2000/XP

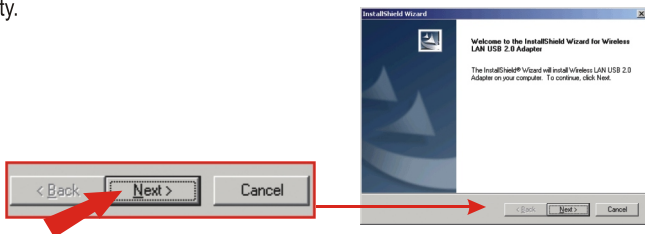
1. Insert the TEW-229UB CD-ROM into your computer's CD-ROM drive; the installation menu window will appear automatically. If the window does not appear automatically, click **Start**, click **Run**, and type **E:\Autorun.exe** in the text-field. Click **OK**.

NOTE: Replace "E" in "E:\Autorun.exe" with whichever letter is assigned to your CD-ROM drive.

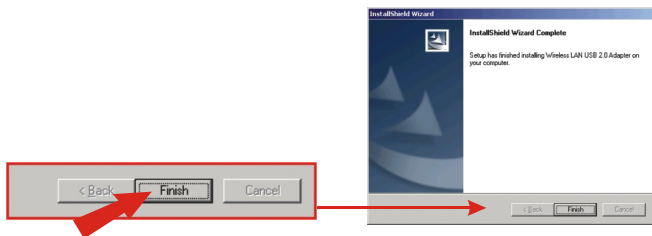
2. On the Installation Menu, click **Install Utility**.



3. Follow the Install Shield Wizard's instructions to install the wireless configuration utility.



4. Click **Finish** to complete the utility installation.



3. Install Hardware & Driver

NOTE: For Windows 98 users, please restart your computer first before the hardware installation.

The TEW-229UB is hot-pluggable, so you can connect or disconnect the TEW-229UB while the computer is on.

1. Connect the TEW-229UB Wireless USB Adapter to your computer's USB port.

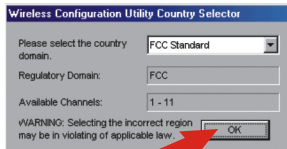


Windows 98SE/ME/2000/XP

1. Once you've connected the Wireless USB Adapter to your computer's USB port, Windows will automatically detect the new hardware and load the appropriate driver.



2. After the driver is installed, the following prompt will appear. Select the appropriate country domain using the drop-down menu, and then click **OK**.



3. Driver installation is now complete.

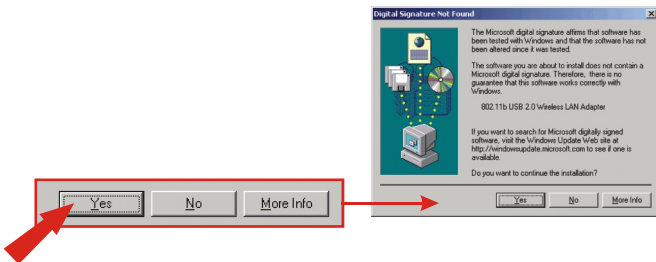
Windows 2000

1. Once you've connected the Wireless USB Adapter to your computer's USB port, Windows will automatically detect the new hardware and load the appropriate driver.

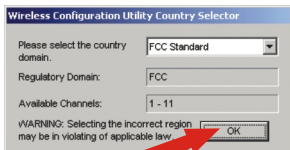


2. When the Digital Signature Not Found window appears, click **Yes** to continue.

NOTE: TRENDnet's Wireless Adapters have been fully tested under all supported Windows Operating Systems and provide assured compatibility.



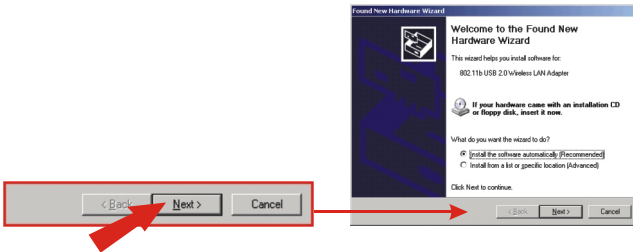
3. After the driver is installed, the following prompt will appear. Select your country domain using the drop-down menu, and then click **OK**.



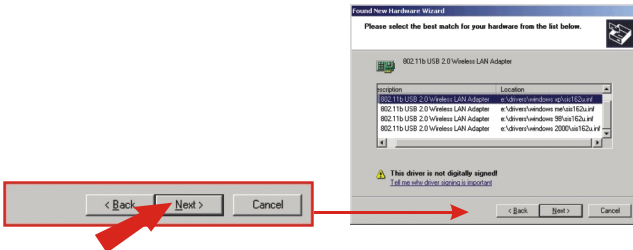
4. Driver installation is now complete.

Windows XP

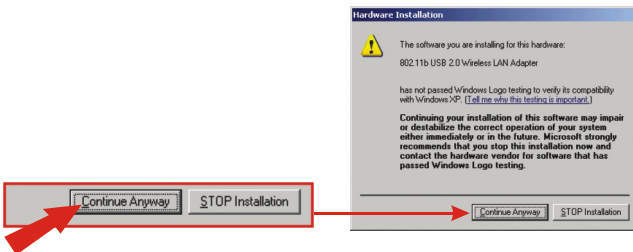
1. After installing the utility software and connecting the Wireless USB Adapter to your computer's USB port, the "Found New Hardware Wizard" will appear. Click **Next** to start.



2. Select the correct driver path and click **Next** to install the driver.

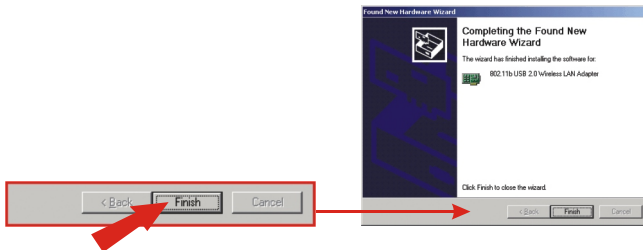


3. A warning message will tell you that the device you're installing has not yet been certified for Windows XP compatibility. Click **Continue Anyway**.

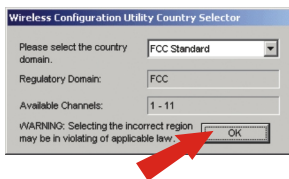


NOTE: TRENDnet's Wireless Adapters have been fully tested under all supported Windows Operating Systems and provide assured compatibility.

4. Click **Finish**.



5. After the driver is installed, the following prompt will appear. Select the appropriate country domain using the drop-down menu, and then click **OK**.



6. Driver installation is now complete.

4. Wireless Configuration

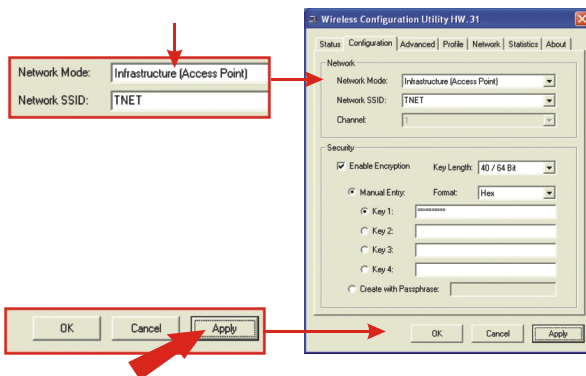
Infrastructure Mode (PC-to-Access Point connection)

1. Double-click the wireless computer icon in your system tray (next to the clock in the bottom right corner of your screen).

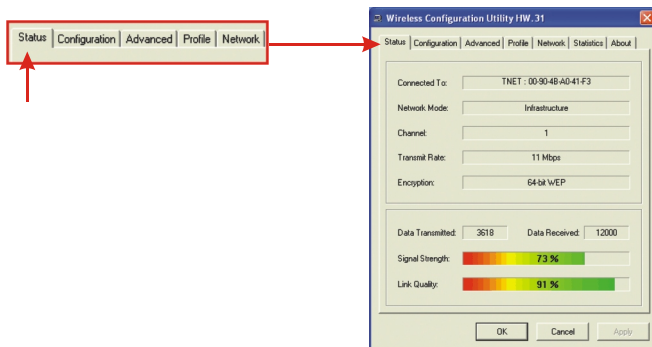


2. Click the Configuration Tab. Select **Infrastructure (Access Point)** as the Network Mode.
3. Enter a network SSID that matches the SSID of your Access Point. (If you are unsure of your Access Point's SSID, refer to your Access Point settings) Click **Apply**.

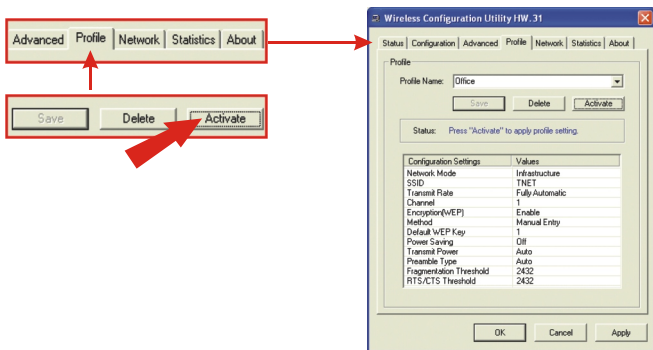
OPTIONAL: Select the Enable Encryption option, and enter a WEP manual key of your choice.



4. Go to **Status** tab to check your wireless connection.



5. To save the current settings as a profile, click the profile tab and type in the Profile Name, click **Save**, and then click **Activate**.



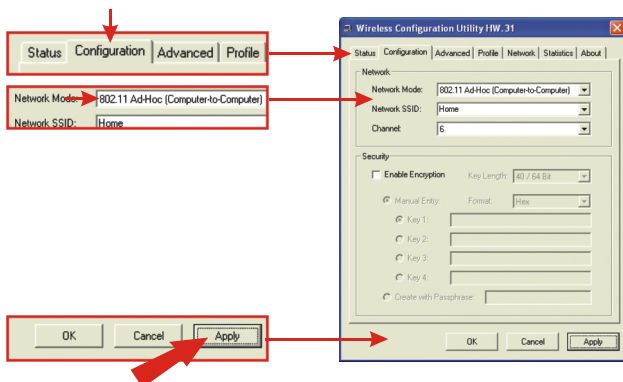
6. The installation and configuration of your Wireless USB Adapter are now complete.

Ad-Hoc Mode (Computer-to-Computer connection)

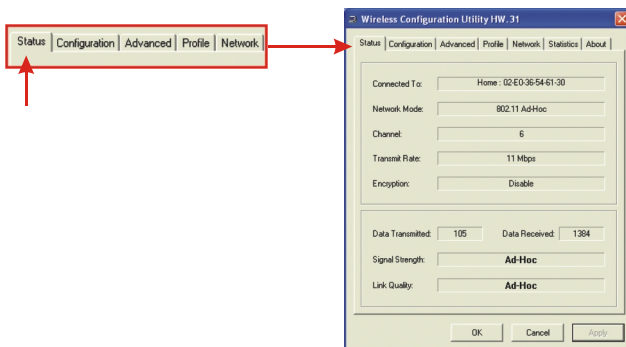
1. Double-click the wireless computer icon in your system tray (next to the clock in the bottom right corner of your screen).



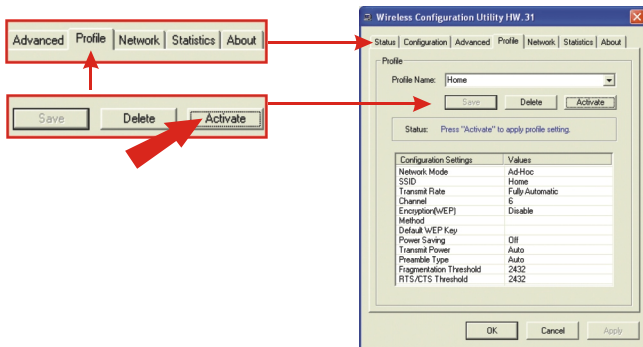
2. Click the Configuration Tab. Select **802.11 Ad-Hoc (Computer to Computer)** as the Network Mode.
3. Create a network SSID and select a channel for your wireless network. Click **Apply**.



4. Go to **Status** tab to check your wireless connection.



5. To save the current settings as a profile, click the profile tab and type in the Profile Name, click **Save** first, and then click **Activate**.



6. The installation and configuration of your Wireless USB Adapter are now complete.

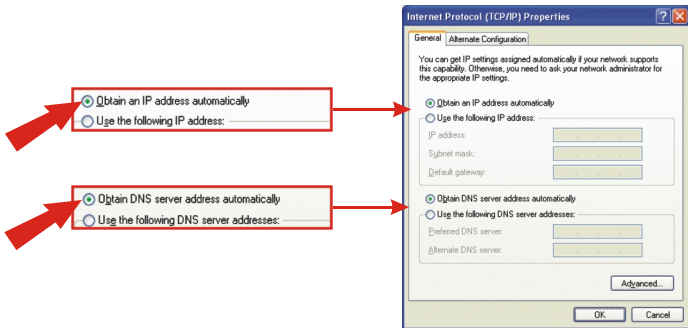
5. Configure TCP/IP Network Settings

Windows 2000/XP

1. On the Desktop, right-click **My Network Places** and click **Properties**. Then, right-click **Wireless Network Connection** and click **Properties**; the Wireless Network Connection Properties Window will appear
2. Under the General tab, select **Internet Protocol (TCP/IP)** and click the **Properties** button; the Internet Protocol (TCP/IP) Properties Window will appear.

i. For DHCP IP address Setup

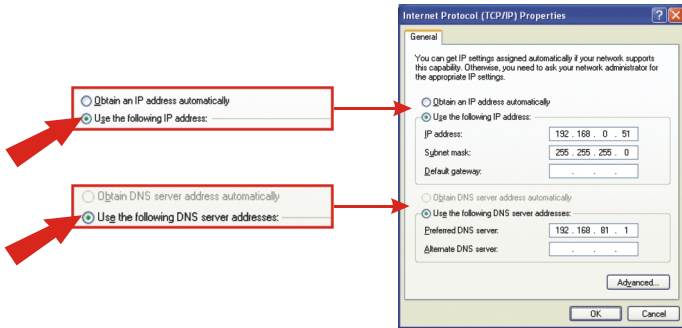
1. Select the **Obtain an IP address automatically** option.
2. Select the **Obtain DNS server address automatically** option.



3. Click **OK** to save the settings.

ii. For Static IP address Setup

1. Select the **Use the following IP address** option and enter the IP, Subnet Mask, and Default gateway addresses.
2. Select the **Use the following DNS server address** option and enter DNS addresses.



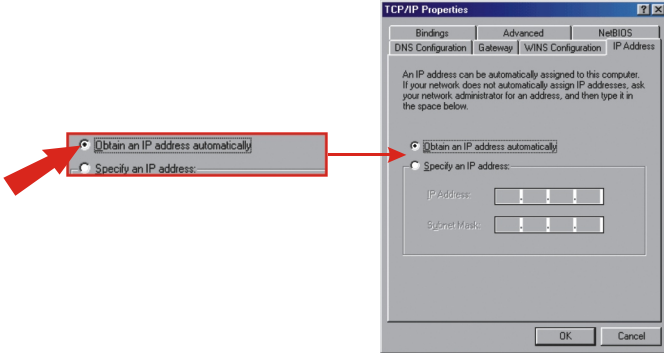
3. Click **OK** to save the settings.

For Windows 98/ME users

1. On the Desktop, right-click **Network Neighborhood** and click **Properties**. Then, right-click **Wireless Network Connection** and click **Properties**; the Wireless Network Connection Properties Window will appear.
2. Under **Configuration** tab, select **802.11b Pen Size Wireless USB Adapter (TCP/IP protocol)** and click on the **Properties** button; the TCP/IP Protocol Properties Window will appear

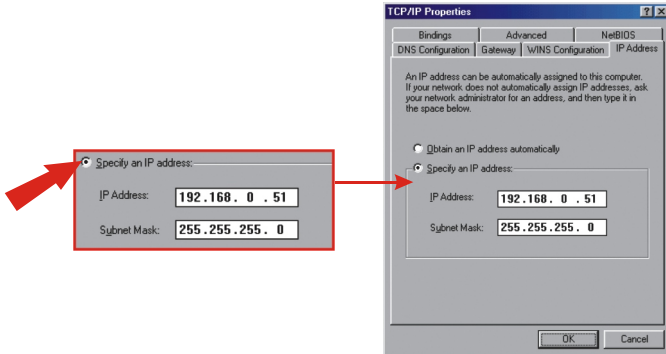
i. For DHCP IP address Setup

1. Select the **Obtain an IP address automatically** option.



ii. For Static IP address Setup

1. Select the **Specify an IP address** option, and enter the IP and Subnet Mask addresses.



Note: If your network's Wireless Access Point or Wireless Router has a DHCP Server feature, please enable it and configure the wireless adapter to use DHCP IP addresses. After the wireless adapter connects to the Access Point or Router, it will receive addresses automatically.

Troubleshooting

Q1. I completed all the steps in the quick installation guide, but my wireless USB Adapter isn't connecting to my access point. What should I do?

A1. You should first verify that the Network SSID matches your wireless router or access point's SSID. If they already match, you should check your TCP/IP properties to ensure that Obtain an IP address automatically is selected.

Q2. Windows is unable to recognize my hardware. What should I do?

A2. Make sure your computer meets the minimum requirements as specified in Section 1 of this quick installation guide. Also, you must install the wireless configuration utility (as described in Section 3) before connecting the wireless USB Adapter.

Q3. I cannot open the wireless configuration utility. What should I do?

A3. Go to your Device Manager (Control Panel à System) to make sure the adapter is installed properly. If you see a networking device with a yellow question mark or exclamation point, you will need to reinstall the device and/or the drivers.

If you still encounter problems, please refer to the User's Guide CD-ROM or contact technical support.

Contact Technical Support

Telephone: +1-310-891-1100
Fax: +1-310-891-1111
Website: www.TRENDNET.com
E-mail: support@trendware.com

Technical Support Hours

7:00AM ~ 6:00PM, Monday through Friday
Pacific Standard Time (except holidays)



Product Warranty Registration

Please take a moment to register your product online.
Go to TRENDware's website at <http://www.TRENDNET.com>

TRENDware International, Inc.
3135 Kashiwa Street
Torrance, CA 90505

<http://www.TRENDNET.com>