

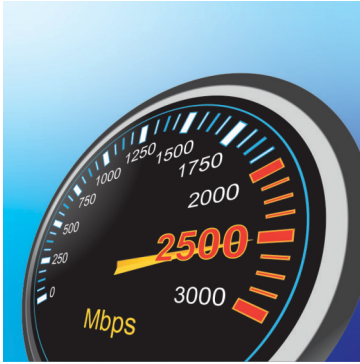


6-Port 2.5G Unmanaged Switch with 10G SFP+ Port

TEG-S5061 (v1.0R)

- 5 x 2.5G RJ-45 ports
- 1 x 10G fiber SFP+ port
- Compatible with existing Cat5e or better cabling
- Backward compatible Ethernet speeds of 1000Mbps
- Backward compatible of SFP speeds of 1000Mbps
- Fanless design eliminates noise
- Wall mountable for installation flexibility
- 45Gbps switching capacity
- IEEE 802.3bz (2.5G) and IEEE 802.3ae (10G SFP+) compliant
- NDAA / TAA compliant (U.S. and Canada only)

Expand your network's bandwidth and reduce digital bottlenecks with TRENDnet's 6-Port 2.5G Unmanaged Switch with 10G SFP+ Port. These multi-gig network switches come equipped with 2.5GBASE-T RJ-45 ports that provide speeds capable of up to 2.5Gbps over your existing Cat5e or better cabling, and a 10G SFP+ port for long-distance fiber networking. Each multi-gig switch features a durable metal enclosure and can be mounted to the wall for setup flexibility. The fanless design lowers energy consumption and eliminates operating noise. TRENDnet's reliable switches are cost-effective solutions to increase your network's throughput.



2.5G Ports

Equipped with 2.5GBASE-T RJ-45 ports that provide ultra-fast speeds capable of up to 2.5Gbps over existing Cat5e or better cabling.



10G SFP+ Port

A dedicated 10G fiber SFP+ port for an ultra-fast network connection provides a cost-effective solution in adding 10G link capability.



Fanless

The fanless design of the 2.5G switches with an SFP+ port lowers energy consumption costs and eliminates operating noise.

FEATURES



Easy Installation

No configuration needed, simply connect network devices to the 2.5G switch with an SFP+ port



2.5G Ports

Equipped with 2.5GBASE-T RJ-45 ports that provide speeds capable of up to 2.5Gbps over existing Cat5e or better cabling



10G SFP+ Port

A dedicated 10G fiber SFP+ port for an ultra-fast network connection provides a cost-effective solution in adding 10G link capability to an SMB network



Switching Capacity

45Gbps switching capacity



Fanless

Fanless design lowers energy consumption and eliminates operating noise



Housing Design

Sturdy metal housing



Wall Mountable

Features a convenient wall mountable design for greater installation flexibility



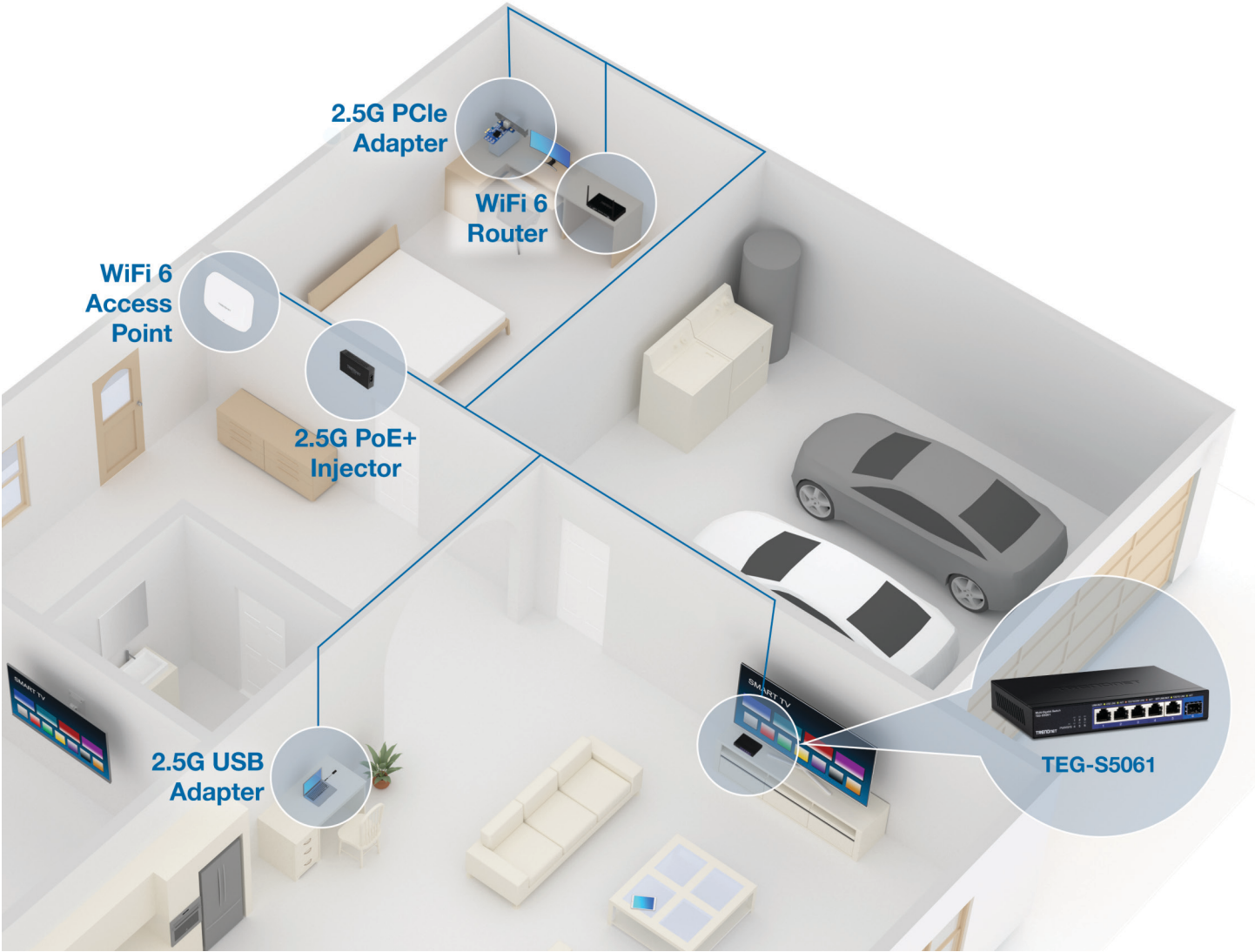
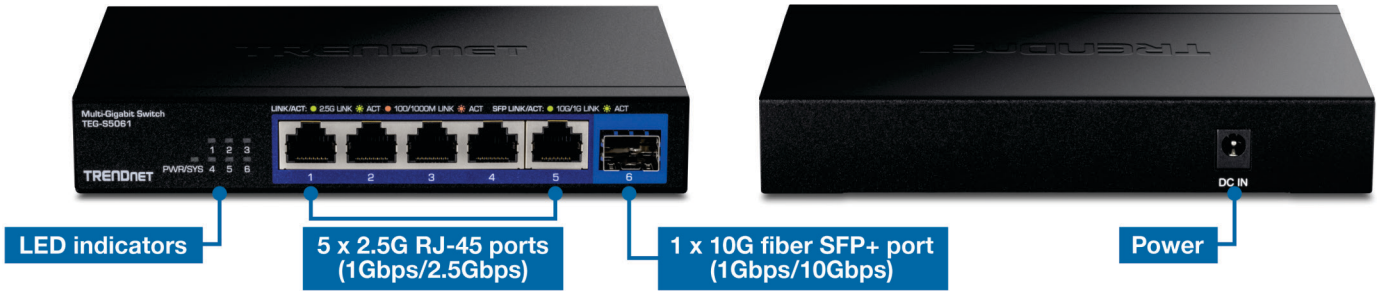
Jumbo Frame

Sends larger packets, or Jumbo Frames (up to 12KB) for increased performance



LED Indicators

LED indicators on this multi-gig switch convey port status



SPECIFICATIONS

Standards

- IEEE 802.3x
- IEEE 802.3z
- IEEE 802.3ab
- IEEE 802.3ae
- IEEE 802.3az
- IEEE 802.3bz

Device Interface

- 5 x 2.5GBASE-T ports (1Gbps/2.5Gbps)
- 1 x 10G fiber SFP+ port (1Gbps/10Gbps)
- LED indicators

Data Transfer Rate

- Gigabit: 2000Mbps (full duplex)
- 2.5 Gigabit: 5Gbps (full duplex)
- SFP: 2Gbps (full duplex)
- SFP+ 20Gbps (full duplex)

Performance

- Switching Capacity: 45Gbps
- RAM Buffer: 1MB
- MAC Address Table: 4K entries
- Forwarding Rate: 33.8Mpps (64-byte packet size)
- Jumbo Frames: 12KB

Special Features

- Wall mountable

Power

- Input: 100 – 240V AC, 50/60 Hz, 0.5A
- Output: 12V DC, 1A external power adapter
- Max. Consumption: 9.5W

Fan/Acoustics

- Fanless design

MTBF

- 674,176 hours

Operating Temperature

- 0° – 40° C (32° – 104° F)

Operating Humidity

- Max. 90% non-condensing

Dimensions (L x W x H)

- 160 x 110 x 26mm (6.29 x 4.33 x 1.02 in.)

Weight

- 414g (14.6 oz.)

Certifications

- FCC
- CE

Warranty

- 3 year

Package Contents

- TEG-S5061
- Quick Installation Guide
- Power adapter (12V DC, 1A)

All references to speed are for comparison purposes only. Product specifications, size, and shape are subject to change without notice, and actual product appearance may differ from that depicted herein.