



## TEG-S40TXD 4-Port 10/100/1000Mbps Copper Gigabit Ethernet Switch

TRENDnet's TEG-S40TXD Copper Gigabit Switch consist of four 10/100/1000Mbps Copper Gigabit Ethernet ports with each port having Auto-negotiation and Auto-MDIX features. The Switch offers a reliable and affordable LAN solution to meet immediate bandwidth demand. Users can connect Server(s) to the Gigabit port(s) to increase network performance or cascade Copper Gigabit Switches together to create high-bandwidth Gigabit backbones. TRENDnet's TEG-S40TXD provides simple migration, scalability, and flexibility to handle new applications and data types making it a highly reliable and cost effective solution for high-speed network connectivity.



### FEATURES

- 4 x 10/100/1000Mbps Copper Gigabit Ethernet Ports
- Full/Half duplex transfer mode for each port (1000Mbps in full-duplex only)
- Auto-MDIX on each port
- Supports store-and-forward switching architecture with non-blocking full wire-speed performance
- Supports aging function and 802.3x flow control for full-duplex mode and back pressure flow control for half-duplex mode operation
- Up to 8K unicast addresses entities per device
- 256KB packet buffer per device
- Extensive front-panel diagnostic LEDs
- 5-year Warranty

### BENEFITS

- **Integration Friendly:**  
Plug-n-Play. Connects with current Fast Ethernet Cat. 5 cables.
- **Flexible:**  
All ports automatically negotiate 10/100/1000Mbps network speed. All ports are Auto-MDIX; connection can be made with either a straight through or a crossover cable.
- **Expandability:**  
Cascade Gigabit Switches together to create a Gigabit backbone.
- **Performance:**  
Gigabit performance, 10 times faster than the 100Mbps Fast Ethernet.



# TEG-S40TXD

## 4-Port 10/100/1000Mbps Copper Gigabit Ethernet Switch

### SPECIFICATIONS

#### Standards:

- IEEE 802.3 10Base-T Ethernet, IEEE 802.3u 100Base-TX Fast Ethernet, IEEE 802.3ab 1000Base-T Gigabit Ethernet, ANSI/IEEE 802.3 NWay Auto-Negotiation, IEEE 802.3x Full-Duplex Flow Control

#### Data Transfer Rate:

- Ethernet: 10Mbps (Half-Duplex), 20Mbps (Full-Duplex),
- Fast Ethernet: 100Mbps (Half-Duplex), 200Mbps (Full-Duplex),
- Gigabit Ethernet: 2000Mbps (Full-Duplex)

#### Cabling:

- Ethernet: Cat. 3,4,5, UTP/STP, EIA/ITA-568 100 ohm
- Fast Ethernet: Cat. 5, UTP/STP EIA/TIA-568 100 ohm
- Gigabit Ethernet: Cat. 5, UTP/STP, EIA/TIA-568 100 ohm

#### Cable Length:

- 100 meters maximum

#### Protocol:

- CSMA/CD

#### Topology:

- Star

#### Data RAM Buffers:

- 256KB per device

#### Filtering Address Table:

- 8K entries per device

#### Diagnostic LEDs:

- Power, LINK/ACT, 100M, 1000M

#### Power Consumption:

- 100~240 VAC 50/60hz, Internal Universal Power Supply, 12 Watts max.

#### Dimensions:

- 280× 180 × 44 mm  
(11" x 7.1" x 1.73") (W x D x H)

#### Weight:

- 1.62 kg (3.57 lb)

#### Temperature:

- Operation: 0°C ~ 40°C (32°~104°F)
- Storage: -10°C ~ 55°C (14°~131°F)

#### Humidity:

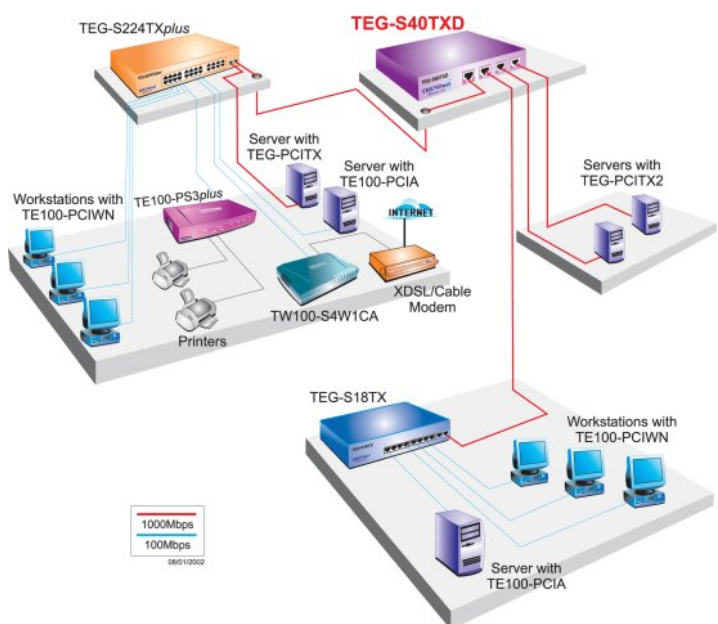
- 5 % to 95 % RH non-condensing

#### Certifications:

- CE Class A, FCC Class A, VCCI-A



### NETWORKING SOLUTIONS



**To Order Please Call:**  
**1-888-326-6061**

### PRODUCT INFORMATION

- > **TEG-S40TXD:** 4-Port 10/100/1000Mbps Gigabit Ethernet Switch
- > **ETH-800I:** Rack Mount Kit
- > **TEG-S80TXD:** 8-Port 10/100/1000Mbps Copper Gigabit Switch
- > **TEG-S224TX:** 26-port 10/100/1000Mbps Copper Gigabit Switch
- > **TEG-PCITX:** 32-Bit PCI 10/100/1000Mbps Copper Gigabit Ethernet Card
- > **TEG-PCITX2:** 32/64-Bit PCI 10/100/1000Mbps Copper Gigabit Ethernet Card

### ORDERING INFORMATION

#### TRENDware International, Inc.

3135 Kashiwa Street  
Torrance, CA. 90505. USA  
Tel: 310-891-1100  
Fax: 310-891-1111  
Web: [www.TRENDNET.com](http://www.TRENDNET.com)  
Email: [sales@trendware.com](mailto:sales@trendware.com)

