



## TEG-S160TX 16-Port 10/100/1000Mbps Copper Gigabit Switch

TRENDnet's TEG-S160TX is a high performance 16-port rack mountable Copper Gigabit Switch. With auto-negotiation technology, the TEG-S160TX automatically negotiates between 10Base-T, 100Base-TX and 1000Base-T network speeds, as well as half and full duplex modes. The Auto-MDIX feature on each port automatically detects and adjusts connection type with either straight-through or crossover cable. Providing simple migration, scalability, and flexibility to handle new applications and data types, TRENDnet's TEG-S160TX is a highly reliable and cost effective solution for high-speed network applications.



### FEATURES

- ...→ 16 10/100/1000Mbps Auto Negotiation and Auto-MDIX Ethernet Ports
- ...→ Full/Half duplex transfer mode for each port (full duplex mode only for 1000Base-T)
- ...→ Wire Speed reception and transmission
- ...→ Store and Forward switching method
- ...→ Integrated address Look-Up Engine, supports 8K absolute MAC Address
- ...→ Supports 128 Kbytes RAM for data buffering
- ...→ Extensive Front Panel Diagnostic LEDs
- ...→ Broadcast Storm protection
- ...→ IEEE 802.3x flow control for full-duplex
- ...→ Standard 19" rack-mount size
- ...→ 5-year Warranty

### BENEFITS

- ...→ **Performance:**  
Top performance for gigabit network solutions.
- ...→ **Easy Upgrade:**  
Current Ethernet workgroups are able to upgrade to Fast Ethernet by changing adapters and hubs without changing switches.
- ...→ **Flexibility:**  
All ports automatically negotiate 10/100/1000 Mbps network speed and Auto-MDIX; easy uplink with any ports.
- ...→ **Cost Effective:**  
Provides 10/100/1000Mbps Ethernet Speed at an affordable price.



# TEG-S160TX

## 16-Port 10/100/1000Mbps Copper Gigabit Switch

### SPECIFICATIONS

#### LAN Standards:

- IEEE 802.3 10Base-T, 802.3u 100Base-TX and 802.3ab 1000Base-T

#### Network Media:

- Ethernet: Cat. 3, 4, 5, UTP/STP, EIA/TIA-568 100 ohm, 100 meters max.
- Fast Ethernet: Cat. 5, UTP/STP, EIA/TIA-568 100 ohm, 100 meters max.
- Gigabit Ethernet: Cat. 5 or better, UTP/STP, EIA/TIA-568 100 ohm, 100 meters max.

#### Protocol:

- CSMA/CD

#### Topology:

- Star

#### Data Transfer Rate:

- Ethernet: 10/20Mbps (Half/Full-Duplex)
- Fast Ethernet: 100/200Mbps (Half/Full-Duplex)
- Gigabit Ethernet: 2000Mbps (Full-Duplex)

#### Data RAM buffer:

- 128 Kbytes per device

#### Filtering Address Table:

- 8K entries per device

#### Diagnostic LEDs:

- Power, Per Port: 3 LEDs Link/Act, 1000M, 100M

#### Power Consumption:

- 100~240VAC 50/60Hz, Internal Universal Switching Power, 40 Watts. Max.

#### Dimensions (WxHxD):

- 440 x 210 x 44 mm (17.3 x 8.27 x 1.73 inches)

#### Weight:

- 3Kg (6.6 lb)

#### Temperature:

- Operating: 0° ~ 40° C (32° ~ 104° F)
- Storage: -10° ~ 70° C (14° ~ 158° F)

#### Humidity:

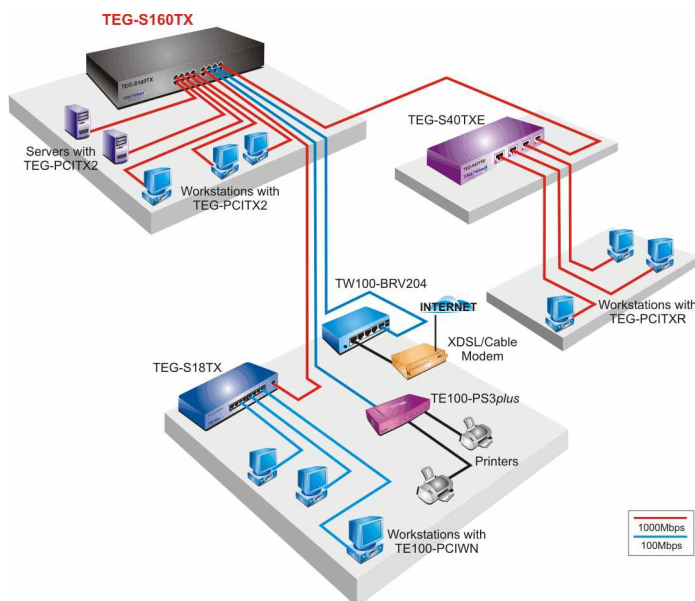
- 10% ~ 90% (no-condensing)

#### Emission:

- FCC, CE



### NETWORKING SOLUTIONS



**To Order Please Call:**  
**1-888-326-6061**

### RELATED PRODUCT

- ➔ **TEG-S160TX:** 16-port 10/100/1000Mbps Copper Gigabit Switch (Rack Mount)
- ➔ **TEG-S240TX:** 24-port 10/100/1000Mbps Copper Gigabit Switch (Rack Mount)
- ➔ **TEG-S80TXD:** 8-port 10/100/1000Mbps Copper Gigabit Switch
- ➔ **TEG-S40TXD:** 4-port 10/100/1000Mbps Copper Gigabit Switch
- ➔ **TEG-S18TX:** 9-port (8x 10/100 1x1000Mbps) Copper Gigabit Switch
- ➔ **TEG-PCITX2:** 10/100/1000Mbps 32/64bit Gigabit Ethernet Copper Adapter

### ORDERING INFORMATION

**TRENDware International, Inc.**  
3135 Kashiwa Street  
Torrance, CA. 90505. USA  
Tel: 310-891-1100  
Fax: 310-891-1111  
Web: [www.TRENDNET.com](http://www.TRENDNET.com)  
Email: [sales@trendware.com](mailto:sales@trendware.com)

