

TEG-PCITXR

**10/100/1000Mbps Gigabit Network Adapter
User's Guide**

**Le Guide de l'utilisateur du
Adaptateur réseau Gigabit 10/100/1000Mbps**

**Diese Benutzeranleitung
10/100/1000MBit/s Gigabit-Netzwerk-Adapter**

**Esta guía del usuario
Adaptador de Red Gigabit a 10/100/1000Mbps**

Version 08.24.04



TRENDnet[®]
TRENDware, USA
What's Next in Networking

Table of Contents

English	1
1. Introduction	1
2. Hardware Installation	3
3. Software Installation	4
4. Configuring TCP/IP Protocol	7
Troubleshooting	11

Congratulations on purchasing your new 10/100/1000Mbps Gigabit PCI Adapter. This Gigabit PCI Adapter is easy to install and suitable for a 10, 100, or 1000Mbps Ethernet network. With Gigabit performance, you can enjoy lightening fast file transfer, uninterrupted video/audio streaming, and excellent response time for network gaming.

Features

- IEEE 802.3, 802.3u and 802.3z compliant
- Support 32-bit 33/66Mhz PCI Local Bus Master high-speed operation of Rev.2.1/2.2 specification
- Plug-and-Play installation
- One RJ-45 connector: Auto detection of 10Mbps Ethernet, 100Mbps Fast Ethernet and 1000Mbps Gigabit Ethernet & Auto MDI-X
- Supports 10/100/1000Mbps Auto-negotiation operation
- Full Duplex support for 10/100/1000Mb/s data rates
- Auto MDI-II/MDI-X crossover for all three speeds
- Two LED indicators (Link, Activity) for easy diagnostic

Package Contents

CAUTION:

Under ordinary circumstances, the 32-bit PCI 10/100/1000Mbps Gigabit Ethernet Card will not be affected by static charge as may be received through your body during handling of the unit. However, there are special circumstances where you may carry an extraordinarily high static charge, and possibly damage the card and/or your computer. It is good practice to eliminate all static electricity by touching a ground (an unpainted metal area of your computer chassis, for example) before performing any installations.



If any item is found missing or damaged, please contact your local reseller for replacement.

Gigabit PCI Adapter LED

Link (10, 100, 1000)

The Link LED indicates the connection speed of the adapter.

ACT

The ACT LED flashes when there is network activity.

2. Hardware Installation

Overview

Each Gigabit Network Adapter is equipped with an RJ-45 port that automatically adjusts the connection speed to 10Mbps, 100Mbps or 1000Mbps; allowing your PC to attach to Ethernet, Fast Ethernet or Gigabit Ethernet networks.

For best results, we recommend using Category 5E or higher twisted-pair RJ-45 cable. However, if you are connecting the adapter to 10Base-T (10Mbps) network, you can use Category 3 or higher cable. For 100Base-TX (100Mbps) and 1000Base-T (1000Mbps) networks, please use Category 5 or higher cables.

Installing Gigabit PCI Adapter into your Pcs

- 1. Power off your PC** and any peripherals attached to it and unplug your PC's power cord.
- 2. Remove computer's cover.**
- 3. Open your computer** and locate the PCI slot(s) on your motherboard. PCI slots are easily identified by their beige or white color, and by the fact that network cards fit snugly into them. Remove the metal slot cover on the back of the PC and then insert the Gigabit Adapter into any available PCI slot.
- 4. Once your Gigabit Adapter is firmly in place**, secure it on your PC's chassis with a screw.
- 5. Replace your PC's cover.**
- 6. Connect one end of the Category 5/5E cable** to the Adapter's RJ-45 port and another end to a Gigabit Switch or Adapter.
- 7. Reconnect your PC's power**, then power on your computer.
If your computer has Windows Operating System, the computer would automatically recognize the Adapter as a new hardware and start the driver installation wizard. Follow the instructions in the **Software Installation** section to install the adapter driver.
For computers with Netware Server/Client and Linux, please go to **HELP** folder from the driver diskette and select the desired operating system to view the driver installation procedures.

The hardware installation is now complete. Next step is to load the adapter driver and configure your PC's operating system to work with the Gigabit Adapter.

3. Software Installation

Installing the Driver for Windows 98

1. **Start up** your computer.
2. **Windows 98 automatically detects** the presence of the Gigabit adapter.
3. **Insert the Driver Diskette** into your floppy drive when the **Add New Hardware Wizard** window appears and click **Next**.
4. Select **Search for the best driver for your device (Recommended)**. Click **Next**.
5. Select **Specify a location**, type **A:\win98** in the drop down box and click **Next** (assuming A: drive is the floppy drive).
6. **Windows is now ready** to install the Gigabit Adapter driver. Click **Next** to continue.
7. **Windows will begin copying the driver files** to your PC.
At this point, the installation may require files from your Windows 98 CD-ROM. When this happens, insert your Windows 98 CD-ROM into your CD-ROM drive and select CD-ROM drive (on the screen) to load the files.
8. After Windows has finished copying the files, it will prompt you to **restart your PC**. Remove the diskette and CD-ROM and click **YES** to restart the PC.

Installing the Driver for Windows ME

1. **Start up your computer.**
2. **Windows ME automatically detects** the presence of the Gigabit adapter.
3. **Insert the Driver Diskette** into your floppy drive when the "Add New Hardware Wizard" window appears and click **Next**.
4. Select **Specify the location of the driver (Advanced)**. Click **Next**.
5. Select **Search for the best driver for your device (Recommended)** and check the **Specify a location**, enter **A:\winme** (assuming A: drive is the floppy drive), and click **Next**.
6. **Windows is now ready** to install the Gigabit Adapter driver. Click **Next** to continue.
7. **Windows will begin copying the driver files** to your PC. At this point, the installation may require files from your Windows ME CD-ROM. When this happens, insert your Windows ME CD-ROM into your CD-ROM drive and select CD-ROM drive (on the screen) to load the files.
8. After Windows has finished copying the files, it will prompt you to **restart your PC**. Remove the diskette and CD-ROM and click **YES** to restart the PC.

Installing the Driver for Windows 2000

1. **Start up your computer.** You must have **administrative rights** to perform the installation.
2. The **Found New Hardware** window appears
3. **Insert the Driver Diskette** into your floppy drive
4. Select **Search for a suitable driver for my device (Recommended)** and click **Next**.
5. At the Locate Driver Files dialog box, select **Specify a location**, click **Next**, type **A:\win2k** and click OK. The Driver file search results dialog box appears. Click **Next** to continue.
6. At Microsoft's **digital Signature** window, click **YES** to continue the installation.
7. Click **Finish** to complete the driver installation.

Installing the Driver for Windows XP

1. **Start up** your computer. You must have **administrative rights** to perform the installation.
2. The **Found New Hardware** window appears
3. **Insert the Driver Diskette** into your floppy drive
4. Select **Install from a list or specific location** option and click **Next**.
5. Select **Search for the best driver in these locations** and select **Include these location** option and type **A:\winxp** and click OK. The Driver file search results dialog box appears. Click **Next** to continue.
6. At Microsoft's **digital Signature** window, click **Continue Anyway** to continue the installation.
7. Click **Finish** to complete the driver installation.

After the driver files are loaded for Windows, the Gigabit network adapter is now ready for operation. If your network requires configuring TCP/IP protocol, please proceed to configure the PC's TCP/IP protocol to communicate with the existing network.

4. Configuring TCP/IP Protocol

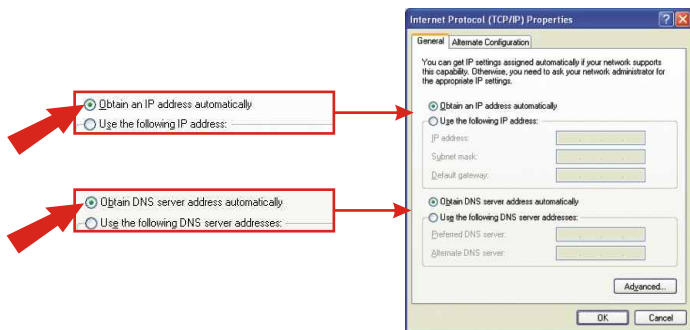
Configure TCP/IP protocol settings to match your network.

Windows 2000/XP

1. On the Desktop, right-click **My Network Places** and click **Properties**. Then, right-click **Wireless Network Connection** and click **Properties**; the Network Connection Properties Window will appear
2. Under the General tab, select **Internet Protocol (TCP/IP)** and click the **Properties** button; the Internet Protocol (TCP/IP) Properties Window will appear.

i.For DHCP IP address Setup (this should work for most network environments)

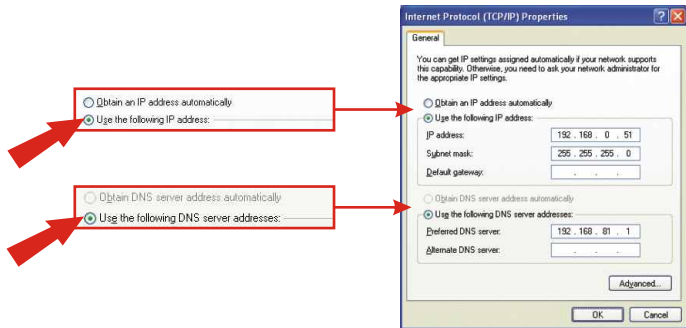
1. Select the **Obtain an IP address automatically** option.
2. Select the **Obtain DNS server address automatically** option.



3. Click **OK** to save the settings.

ii. For Static IP address Setup

1. Select the **Use the following IP address** option and enter the IP, Subnet Mask, and Default gateway addresses.
2. Select the **Use the following DNS server address** option and enter DNS addresses.



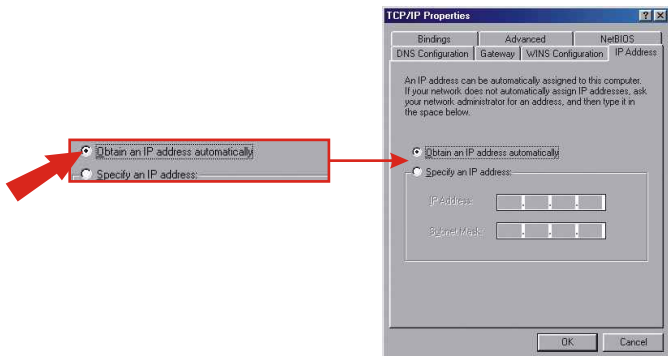
3. Click **OK** to save the settings.

For Windows 98/ME users

1. On the Desktop, right-click **Network Neighborhood** and click **Properties**. Then, right-click **Wireless Network Connection** and click **Properties**; the Wireless Network Connection Properties Window will appear.
2. Under **Configuration** tab, select **Realtek RTL 8169/8110 Gigabit Ethernet NIC (TCP/IP protocol)** and click on the **Properties** button; the TCP/IP Protocol Properties Window will appear

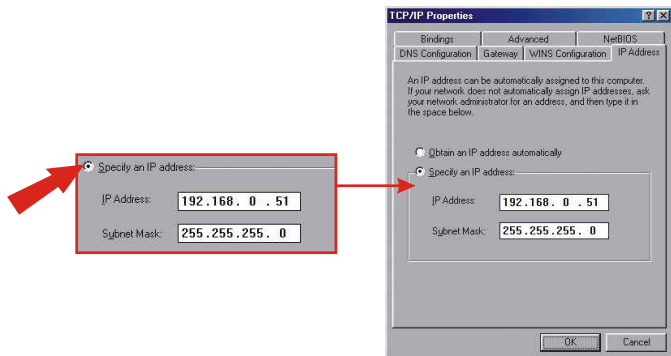
i. For DHCP IP address Setup (this should work for most network environments)

1. Select the **Obtain an IP address automatically** option.



ii. For Static IP address Setup

1. Select the **Specify an IP address** option, and enter the IP and Subnet Mask addresses.



2. Select Gateway option and enter the Gateway IP address
3. Select DNS Configuration and add the DNS IP address and click OK to finish.

Note: If your network has a DHCP Server (e.g. Internet Router), for ease of configuration, please enable it and setup the network adapter with DHCP IP configuration. After the adapter connects to the network, it will receive the addresses automatically.

[i.Checking the Adapter's IP Address](#)

Windows 2000/XP:

go to "start", select "run", type in **cmd**, then click ok. At the command prompt (C:\), type in **ipconfig/all** and hit "Enter".

Windows 98/ME:

go to "Start", select "Run", type in **winipcfg**, then click "OK". From the drop-down menu, select the name of the network adapter (not the PPP Adapter).

Ping Command:

If you know a networked device's IP address, in the command prompt (c:\), type in **ping xxx.xxx.xxx.xxx** (where xxx.xxx.xxx.xxx is the device's IP address) and hit "Enter". If you see replies from this IP address, your computer should be able to communicate with this device.

This section provides possible solutions to problems regarding the installation and operation of the Gigabit Adapter.

1: Windows does not detect the Gigabit Adapter installed.

Solution: The PCI card might not be inserted into the PCI slot correctly or securely. Please power off the computer, remove and reinstall the Adapter. Or, install the Adapter into a different PCI slot. The motherboard of your system might not be Plug & Play compatible. Please check your motherboard's user's manual for more information.

2: Windows can't locate the driver for the Gigabit Network Adapter.

Solution: Double check the driver diskette and make sure it's labeled for this Adapter. For the latest driver, please visit <http://www.trendnet.com>, select the "Download" section on the page, and select the "product name" to download the driver.

Please note the driver file on the web site is either in **.EXE** (executable) or **.ZIP** (compressed) format. After downloading the file, for .EXE file, please double click the file and take a note on where the driver files are copying, and then locate the driver from that location (e.g. C:\TEG-PCITXR). For the ZIP file, please use WINZIP or other compatible decompressed software to expand the file to a desired location and then locate the driver from that location.

Contact Technical Support

Telephone: +1-310-891-1100
Fax: +1-310-891-1111
Website: www.TRENDNET.com
E-mail: support@trendware.com

Technical Support Hours

7:00AM ~ 6:00PM, Monday through Friday
Pacific Standard Time (except holidays)



Product Warranty Registration

Please take a moment to register your product online.
Go to TRENDware's website at <http://www.TRENDNET.com>

TRENDware International, Inc.
3135 Kashiwa Street
Torrance, CA 90505

<http://www.TRENDNET.com>