

# TEG-PCBUSR

Gigabit Ethernet PC Card Adapter  
Quick Installation Guide

Gigabit Ethernet PC Card Adapter  
Ghid de Instalare rapida

Version 07.27.05



**TRENDnet**<sup>®</sup>  
TRENDware, USA  
**What's Next in Networking**

# Table of Contents

English .....	1
1. Prepare for Installation .....	1
2. Product Detail .....	2
3. Hardware Installation .....	3
4. Driver Installation .....	4
5. Verify Installation .....	14
Română .....	17
1. Pregatiti-va pentru instalare .....	17
2. Detalii Produs .....	18
3. Instalarea Hardware .....	19
4. Instalarea Driverelor .....	20
5. Verificarea Instalarii .....	30
Troubleshooting .....	34

# English QIG

## 1. Prepare for Installation

Thank you for purchasing TRENDnet's TEG-PCBUSR Gigabit Ethernet PC Card Adapter.

This guide will help you set up your Gigabit Ethernet PC Card Adapter. Following the installations should be quick and easy. If you run into problems, please refer to the Troubleshooting section. If you need further technical support, please visit [www.TRENDNET.com](http://www.TRENDNET.com) or call technical support by phone.

### Verify Package Contents

Please make sure you have everything in the box:



### Minimum System Requirements

1. Pentium 266Mhz or faster processor
2. 64MB RAM or more
3. Available 32-bit CardBus Type II slot
4. Windows XP, 2000, ME, 98SE, Microsoft Network Client for DOS (NDIS 2 driver), or NetWare Client for DOS (ODI driver)

## 2. Product Detail

The Gigabit Ethernet CardBus Adapter has a RJ-45 connector, and two LEDs that indicate data rate and network activity.



## 3. Hardware Installation

1. Boot up your laptop PC and make sure Windows's Desktop is properly loaded.
2. Insert the TEG-PCBUSR into an available PC Card slot.
3. Make sure the TEG-PCBUSR is inserted all the way to the end of the slot.



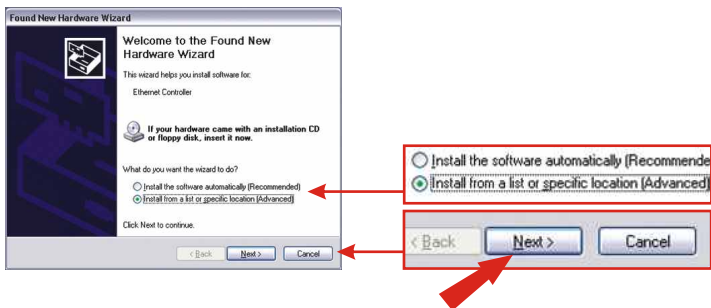
4. Your laptop should emit a beeping sound that indicates newly installed hardware.

# 4. Driver Installation

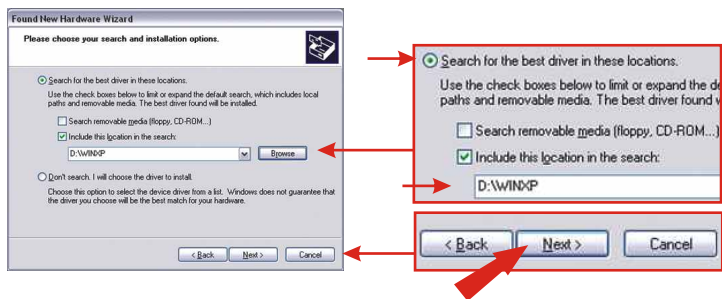
## Windows XP

After inserting the TEG-PCBUSR, the “Found New Hardware Wizard” will appear. Windows will automatically detect and ask you to install the Gigabit Ethernet Driver for the TEG-PCBUSR.

1. Insert the TEG-PCBUSR Driver CD-ROM into your computer's CD-ROM drive.
2. Click **Install from a list or specific location (Advanced)**. Click **Next**.



3. Click **Search for the best driver**, click **location:**, and type **a:\winxp** in the text box. Click **Next**.



4. NOTE: TRENDnet's Gigabit Ethernet PC Card has been fully tested under all supported Windows Operating Systems and has been approved for their functionality; click **Continue Anyway**.



5. Click **Finish**.



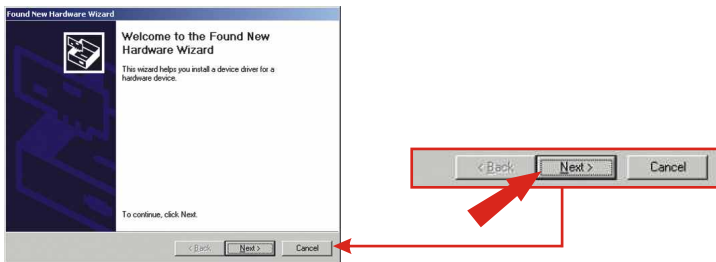
Your driver installation is now complete.

**NOTE:** If you would like to verify the TEG-PCBUSR has been installed properly for your windows, go to the Verify Installation section.

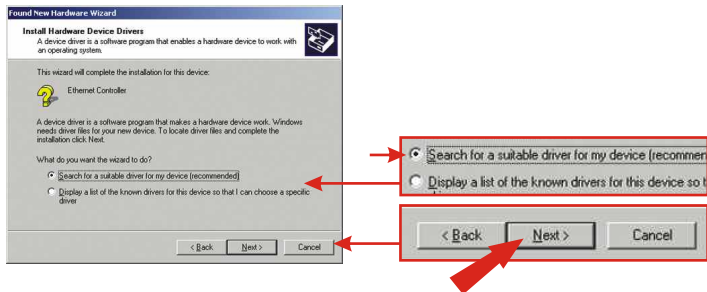
## Windows 2000

After inserting the TEG-PCBUSR, the “Found New Hardware Wizard” will appear. Windows will automatically detect and ask you to install the Gigabit Ethernet Driver for the TEG-PCBUSR.

1. Insert the TEG-PCBUSR Driver CD-ROM into your computer's CD-ROM drive.
2. Click **Next**.

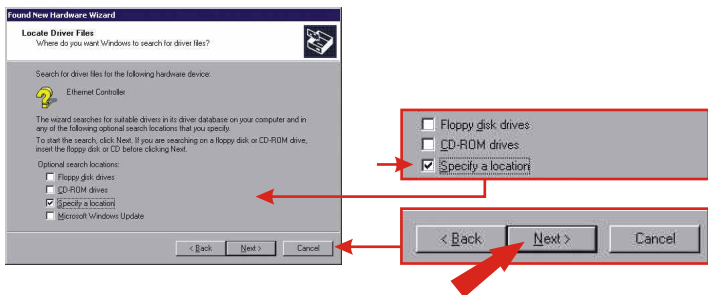


3. Click **Search for a suitable driver for my device (recommended)**. Click **Next**.

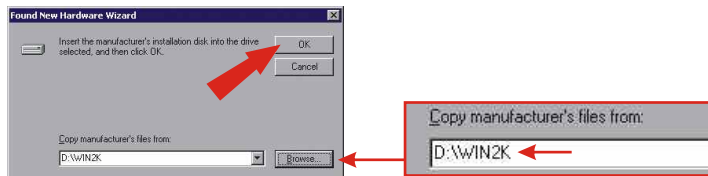




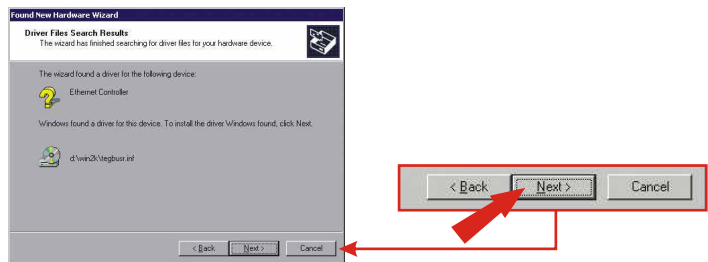
#### 4. Click **Specify a location**. Click **Next**.



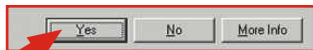
#### 5. Type **a:\win2k** in the text box. Click **OK**.



#### 6. Click **Next**.



## 7. Click Yes.



## 8. Click Finish.



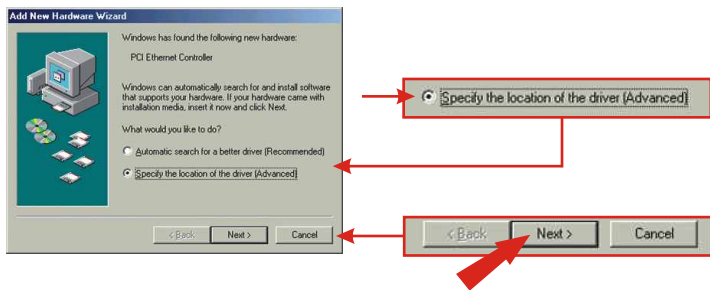
Your driver installation is now complete.

**NOTE:** If you would like to verify the TEG-PCBUSR has been installed properly for your windows, go to the Verify Installation section.

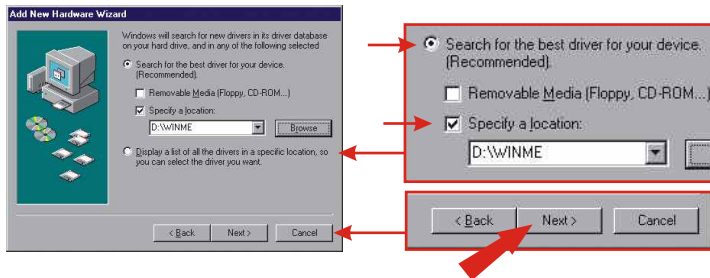
## Windows ME

After inserting the TEG-PCBUSR, the “Found New Hardware Wizard” will appear. Windows will automatically detect and ask you to install the Gigabit Ethernet Driver for the TEG-PCBUSR.

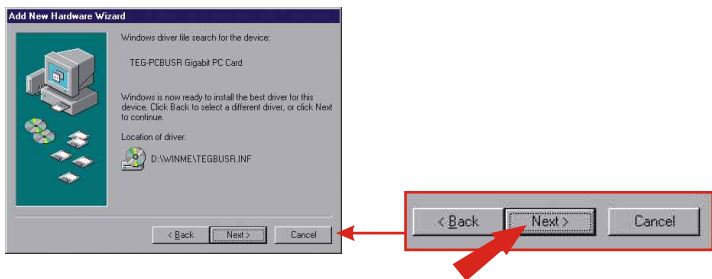
1. Insert the TEG-PCBUSR Driver CD-ROM into your computer's CD-ROM drive.
2. Click **Specify the location of the driver (Advanced)**. Click **Next**.



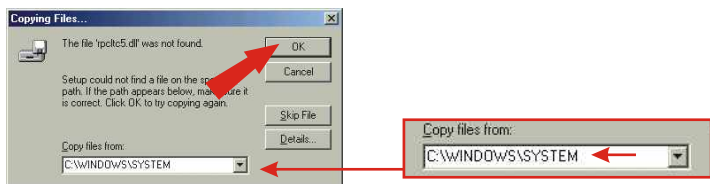
3. Click **Search for the best driver**, click **location:**, and type **a:\WINME** in the text box. Click **Next**.



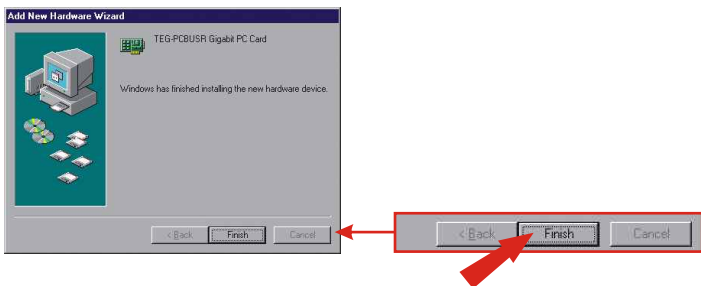
#### 4. Click **Next**.



#### 5. If you get this Windows, then type **C:\WINDOWS\SYSTEM** and click **OK**. If you do not get this Window, go to **step 6**.



#### 6. Click **Finish**.



## 7. Click **Yes**.



Your driver installation is now complete.

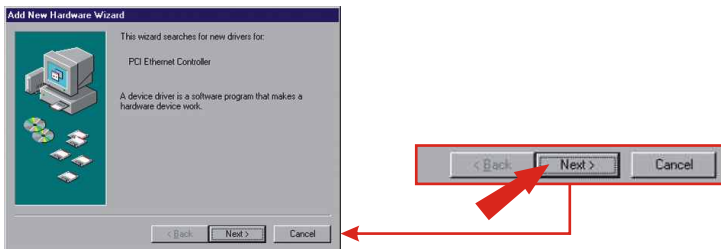
**NOTE:** If you would like to verify the TEG-PCBUSR has been installed properly for your windows, go to the Verify Installation section.

## Windows 98SE

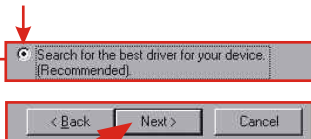
After inserting the TEG-PCBUSR, the “Found New Hardware Wizard” will appear. Windows will automatically detect and ask you to install the Gigabit Ethernet Driver for the TEG-PCBUSR.

1. Insert the TEG-PCBUSR Driver CD-ROM into your CD-ROM drive.

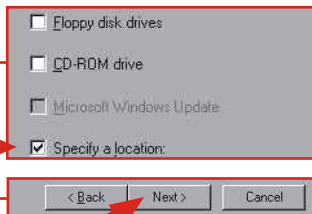
2. Click **Next**.



3. Click **Search for the best driver for your device (Recommended)**. Click **Next**.



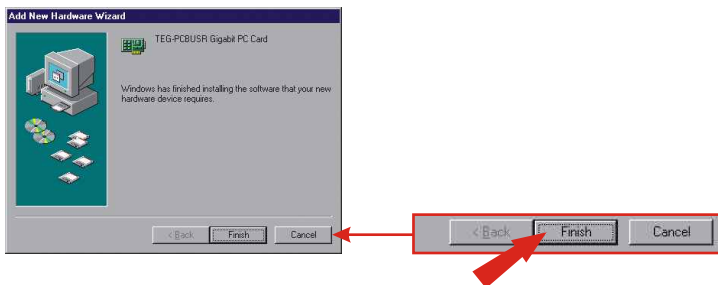
4. Click **Specify a location**, and type in the text box: **A:\WIN98SE**. Click **Next**.



5. Click **Next**.



## 6. Click **Finish**.



## 7. Click **Yes**.



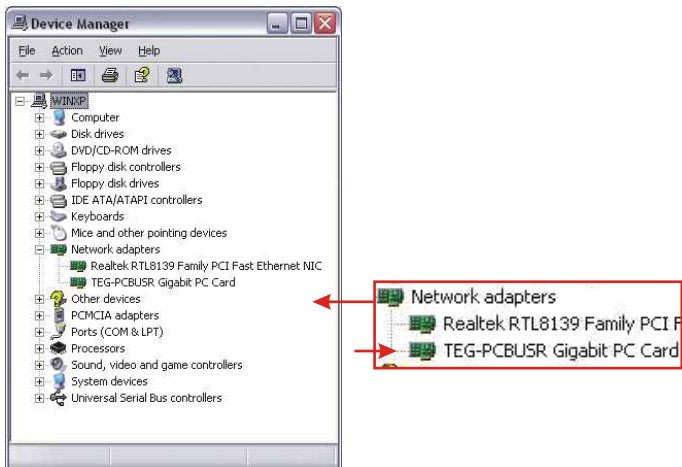
Your driver installation is now complete.

**NOTE:** If you would like to verify the TEG-PCBUSR has been installed properly for your windows, go to the Verify Installation section.

# 5. Verify Installation

## Windows XP

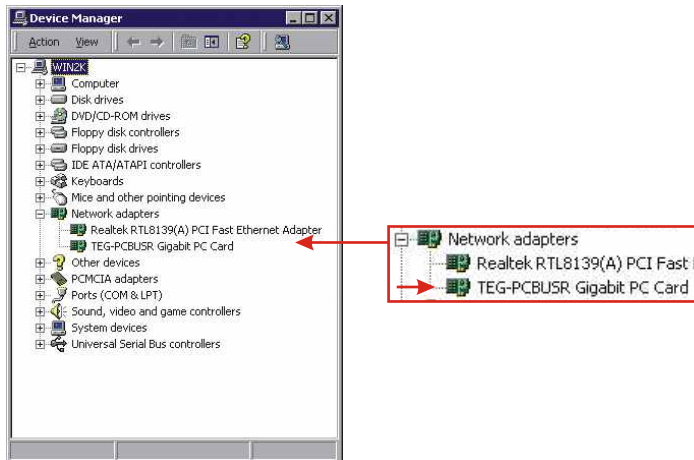
1. Click **Start**, and then click **Control Panel**.
2. Double-click the **System** icon. On the **Hardware** tab, click **Device Manager** button.
3. Expand the “Network adapters” heading to verify that the **TEG-PCBUSR Gigabit PC Card** has been installed.





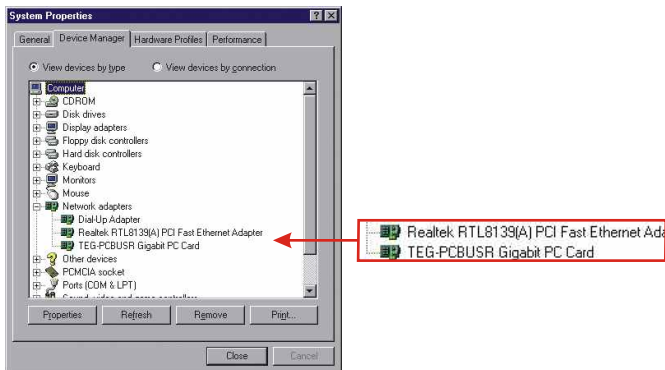
## Windows 2000

1. Click **Start**, highlight **Settings**, and then click on **Control Panel**.
2. Double-click the **System** icon. On the **Hardware** tab, click **Device Manager** button.
3. Expand the “Network adapters” heading to verify that the **TEG-PCBUSR Gigabit PC Card** has been installed.



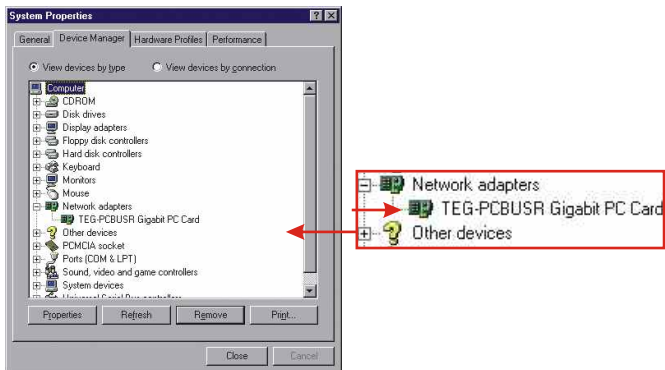
## Windows ME

1. Click **Start**, highlight **Settings**, and then click on **Control Panel**.
2. Double-click the **System** icon, and click the **Device Manager** tab.
3. Expand the “Network adapters” heading to verify that the **TEG-PCBUSR Gigabit PC Card** has been installed.



## Windows 98SE

1. Click **Start**, highlight **Settings**, and then click on **Control Panel**.
2. Double-click the **System** icon, and click the **Device Manager** tab.
3. Expand the “Network adapters” heading to verify that the **TEG-PCBUSR Gigabit PC Card** has been installed.



# Română QIG

## 1. Pregatiti-va pentru instalare

Va multumim ca ati achizitionat TEG-PCBUSR Gigabit Ethernet PC Card Adapter de la TRENDnet.

Acest ghid va va ajuta sa instalati Adaptorul de Card Gigabit Ethernet PC. Urmarierea pasilor de instalare ar trebui sa se faca rapid si usor. Daca aveti probleme, accesati setiunea Troubleshooting (Probleme). Daca in continuare aveti nevoie de indrumare, va rugam accesati site-ul [www.TRENDNET.com](http://www.TRENDNET.com) sau sunati pentru pentru suport tehnic.

### Continutul Pachetului

Va rugam asigurati-va ca aveti tot in cutie:



### Cerinte Minime de Sistem

1. Pentium 266Mhz sau proecsor mai rapid
2. 64MB RAM sau mai mult
3. Slot disponibil de tip 32-bit CardBus Type II
4. Windows XP, 2000, ME, 98SE, Microsoft Network Client pentru DOS (NDIS 2 driver), sau NetWare Client pentru DOS (ODI driver)

## 2. Detalii Produs

Adaptorul Gigabit Ethernet CardBus are un conector RJ-45 si doua LED-uri ce indica rata de date si activitatea retelei.



### 3. Instalarea Hardware

1. Boot-ati laptopul si asigurati-va ca Desktop-ul de la Windows este incarcat corect.
2. Introduceti TEG-PCBUSR in slotul PC Card disponibil.
3. Asigurati-va ca TEG-PCBUSR este introdus in totalitate in slot.



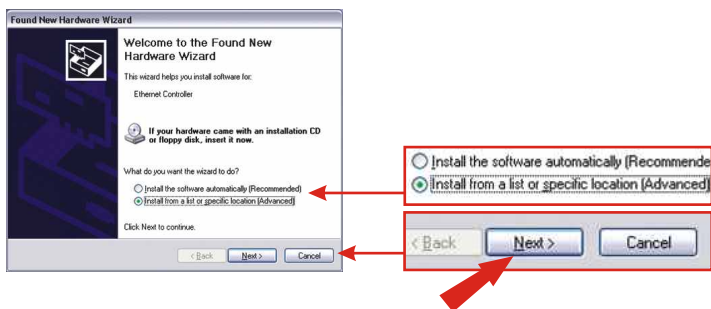
4. Laptopul dvs ar trebuie sa emita un sunet "bip" care indica hardware nou instalat.

# 4. Instalarea Driverelor

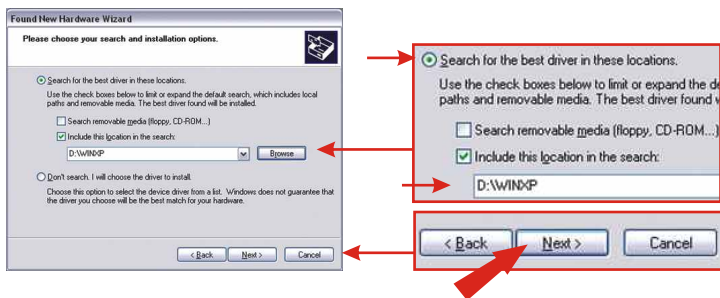
## Windows XP

Dupa introducerea TEG-PCBUSR, Wizardul "Found New Hardware" va aparea. Windows va detecta automat si va av intrebarea daca doriti sa instalati Driverul Gigabit Ethernet pentru TEG-PCBUSR.

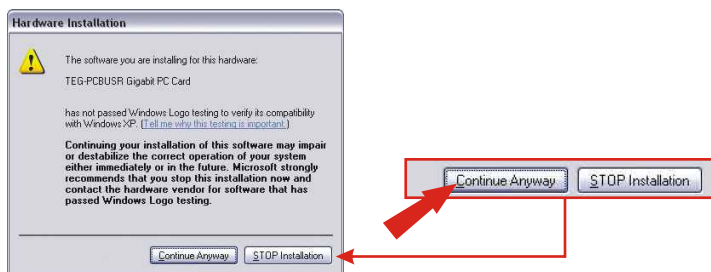
1. Introduceti Driverul TEG-PCBUSR in unitatea CD-ROM.
2. Dati Click pe Instal dintr-o lista sau o locatie anume (Advanced). Dati Click pe Next.



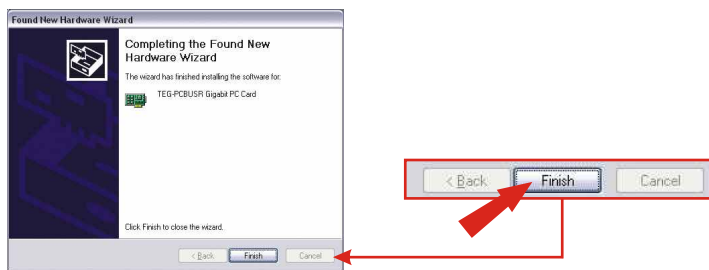
3. Dati Click pe Search for the best driver (cauta cea mai buna varianta de driver), dati click pe location, si tastati D:\WINXP in casuta destinata textului. Dati Click pe Next.



4. **NOTA:** Cardul Gigabit Ethernet de la TRENDnet's a fost testat complet sub toate sistemele Windows si a fost aprobat in ceea ce priveste functionalitatea ; dati click pe **Continue Anyway**.



5. Dati Click pe **Finish**.



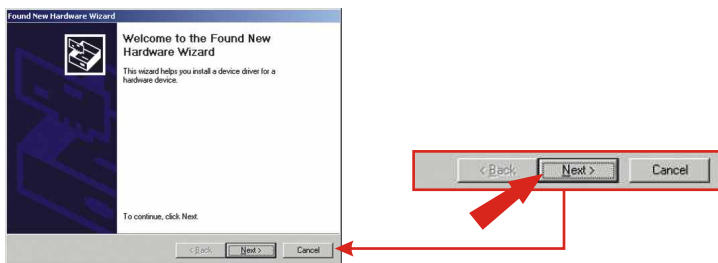
Instalarea driverului este acum completa.

**Nota:** In cazul in care doriti da verificati daca TEG-PCBUSR s-a instalat in mod corect, accesati sectiunea **Verify Installation** .

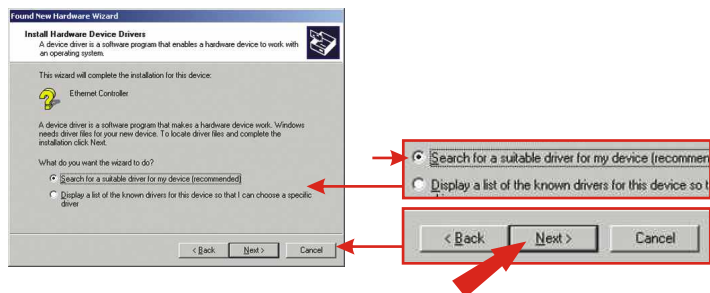
## Windows 2000

Après avoir inséré le TEG-PCBUSR, le “Found New Hardware Wizard” va apparaître. Windows va automatiquement le détecter et vous demander d'installer le driver du Gigabit Ethernet pour le TEG-PCBUSR.

1. Introduceti Driverul TEG-PCBUSR in unitatea CD-ROM.
2. Dati Click pe **Next**.

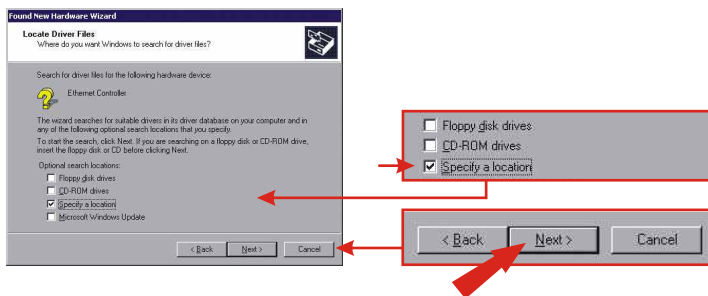


3. Dati Click pe **Search for a suitable driver for my device (recommended)**.  
Dati Click pe **Next**.

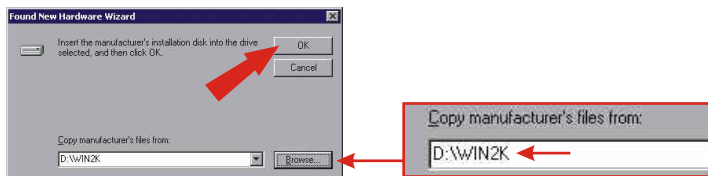




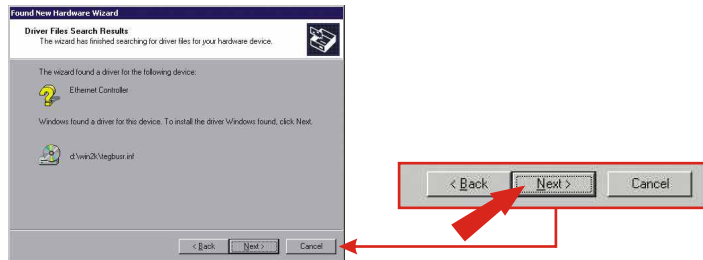
4. Dati Click pe **Specify a location**(specificati locatia). Dati Click pe **Next**.



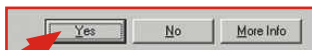
5. Tastati **D:\WIN2K** in casuta destinata textului. Dati Click **OK**.



6. Dati Click pe **Next**.



## 7. Dati Click pe **Yes**.



## 8. Dati Click pe **Finish**.



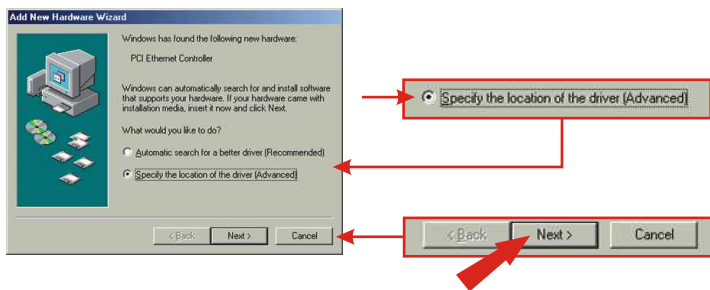
Instalarea driverului este acum completa.

**Nota:** In cazul in care doriti da verificati daca TEG-PCBUSR s-a instalat in mod corect, accesati sectiunea **Verify Installation**.

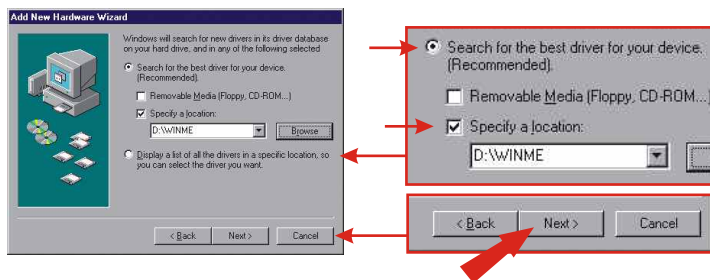
## Windows ME

Dupa introducerea TEG-PCBUSR, Wizardul "Found New Hardware" va apareea. Windows va detecta automat si va va intreba daca doriti sa instalati Driverul Gigabit Ethernet pentru TEG-PCBUSR..

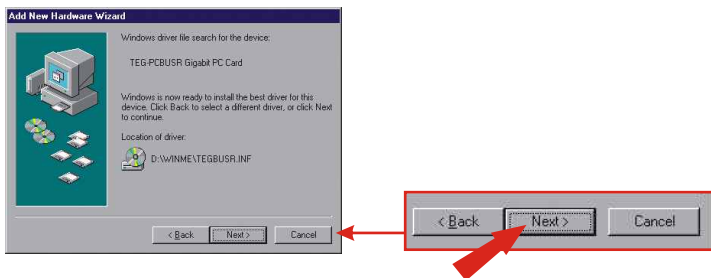
1. Introduceti Driverul TEG-PCBUSR in unitatea CD-ROM .
2. Dati Click pe **Specify the location of the driver (Advanced)**. Dati Click pe **Next**.



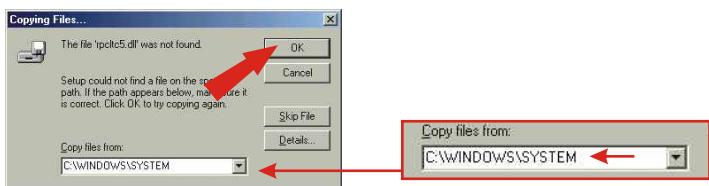
3. Dati Click pe **Search for the best driver** ,dati click pe **location** ,si tastati in casuta destinata textului.Dati Click pe **Next**.



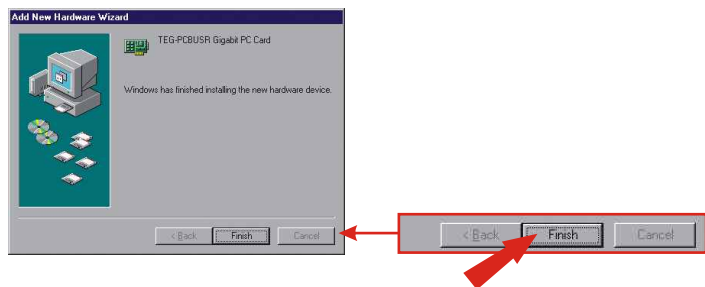
#### 4. Dati Click pe **Next**.



5. Daca dati de aceasta fereastra, tastati **C:\WINDOWS\SYSTEM** si dati click pe **OK**. Daca nu dati de aceasta fereastra, treceti la pasul 6.



#### 6. Dati Click pe **Finish**.



## 7. Dati Click pe **Yes**.



Instalarea driverului este acum completa.

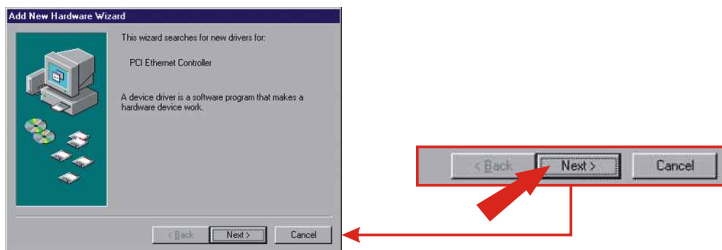
**Nota:** In cazul in care doriti da verificati daca TEG-PCBUSR s-a instalat in mod corect, accesati sectiunea Verify Installation .

## **Windows 98SE**

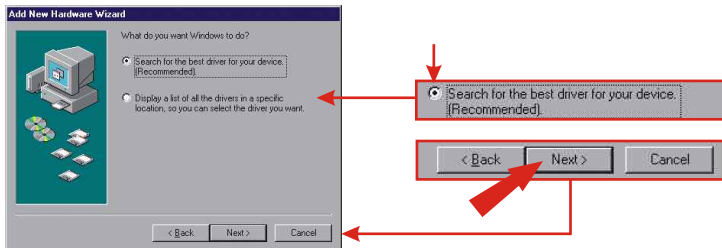
Dupa introducerea TEG-PCBUSR, Wizardul "Found New Hardware" va aparea. Windows va detecta automat si va va intrea daca doriti sa instalati Driverul Gigabit Ethernet pentru TEG-PCBUSR.

1. Introduceti Driverul TEG-PCBUSR in unitatea CD-ROM .

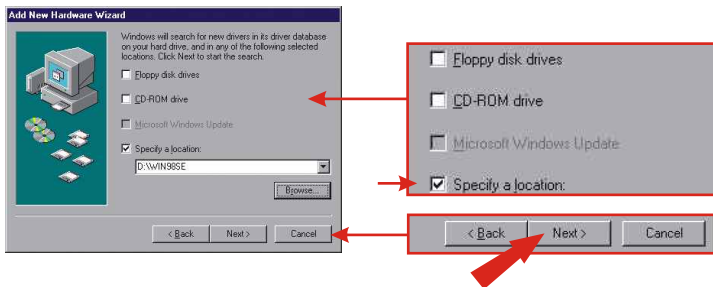
2. Dati Click pe **Next**.



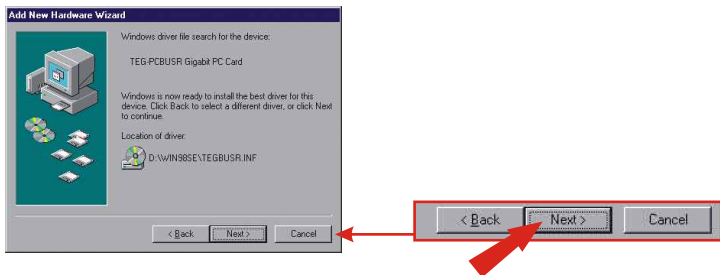
3. Dati Click pe **Search for the best driver for your device** (Recommended).  
Dati Click pe **Next**.



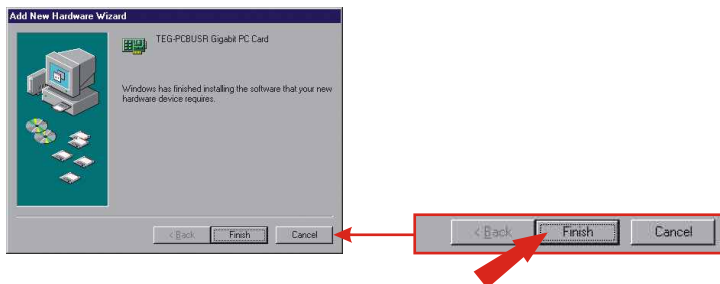
4. Dati Click pe **Specify a location**, si tastati in casuta destinata textului:  
**D:\WIN98SE**. Dati Click pe **Next**.



5. Dati Click pe **Next**.



## 6. Dati Click pe **Finish**.



## 7. Dati Click pe **Yes**.



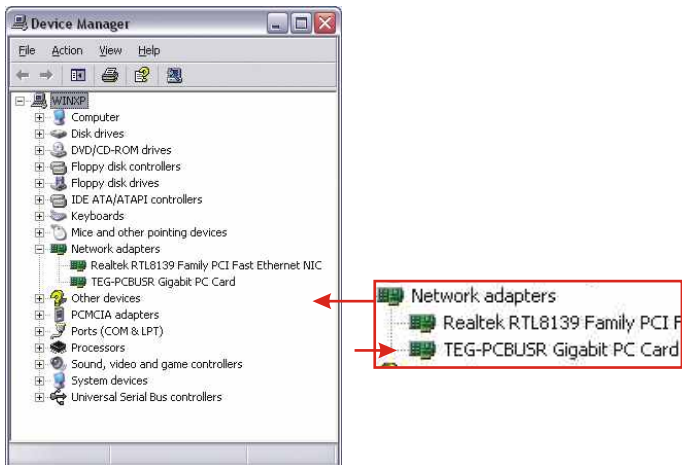
Instalarea driverului este acum completa.

**Nota:** In cazul in care doriti da verificati daca TEG-PCBUSR s-a instalat in mod corect, accesati sectiunea Verify Installation.

# 5. Verificarea Instalarii

## Windows XP

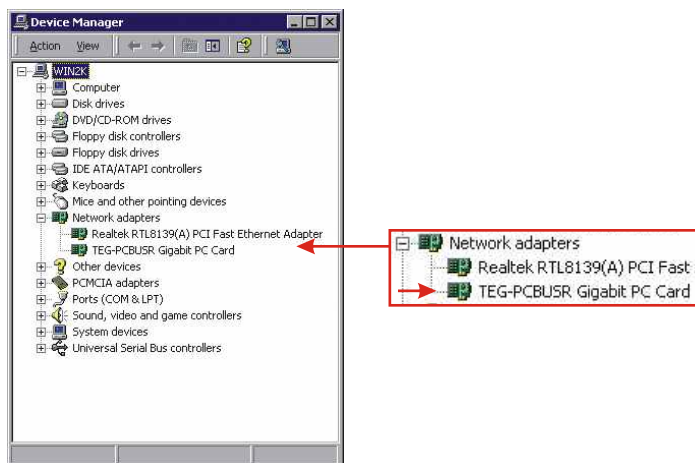
1. Dati Click pe **Start**, apoi dati click pe **Control Panel**.
2. Dati Dublu-click pe icon-ul **System**. In tab-ul **Hardware**, dati click pe butonul **Device Manager**.
3. Extindeti titlul "Network adapters" pentru a verifica daca **TEG-PCBUSR Gigabit PC Card** a fost instalat.





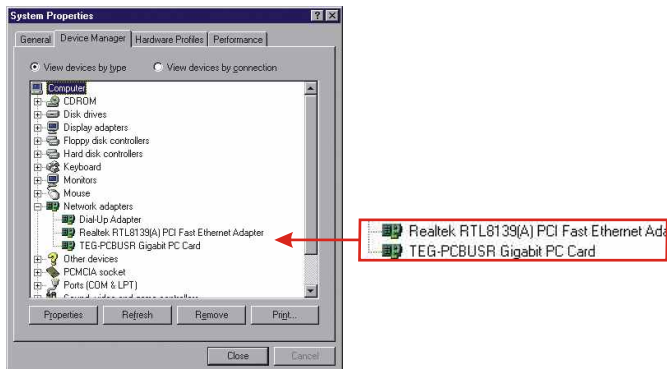
## Windows 2000

1. Dati Click pe **Start**, subliniati **Settings**, iar apoi dati click pe **Control Panel**.
2. Dati Dublu-click pe icon-ul **System**. In tab-ul **Hardware** tab, dati click pe butonul **Device Manager**.
3. Extindeti titlul "Network adapters" pentru averifica daca **TEG-PCBUSR Gigabit PC Card** a fost instalat. Windows ME



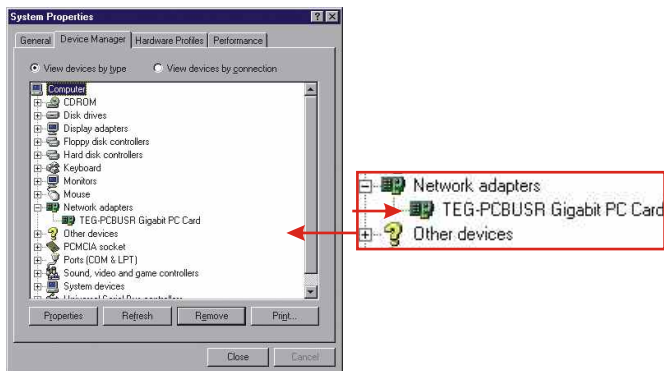
## Windows ME

1. Dati Click pe **Start**, subliniati **Settings**, iar apoi dati click pe **Control Panel**.
2. Dati Dublu-click pe icon-ul **System**. In tab-ul **Hardware** tab,dati click pe butonul **Device Manager**.
3. Extindeti titlul "Network adapters" pentru averifica daca **TEG-PCBUSR Gigabit PC Card** a fost instalat.



## Windows 98SE

1. Dati Click pe **Start**, subliniati **Settings**, iar apoi dati click pe **Control Panel**.
2. Dati Dublu-click pe icon-ul **System**. In tab-ul **Hardware** tab, dati click pe butonul **Device Manager**.
3. Extindeti titlul "Network adapters" pentru averifica daca **TEG-PCBUSR Gigabit PC Card** a fost instalat.



# Troubleshooting

## **Q1. Why is the “Speed” LED off, but my “Link/Act” LED on?**

**A1.** If you have installed the TEG-PCBUSR driver and have verified its proper installation, then your computer is connected to a network that operates at 10Mbps. Please consult the User’s Guide for LED indicators.

## **Q2. Why can’t my notebook reach 1000 Mbps when I configure my TEG-PCBUSR to 1000Mbps Full Duplex?**

**A2.** Connect your notebook into a Gigabit Switch and see if the “Speed” LED turns green.

## **Q3. After successful installation of the TEG-PCBUSR Gigabit Ethernet PC Card adapter, I connected a CAT-5 cable into the PC Card’s RJ-45 connector, but it doesn’t seem to work. What should I do?**

**A3.** Check and verify that the other end of the CAT-5 cable is connected to your switch, router, or RJ-45 jack. After that has been checked and verified, double-check and make sure your TEG-PCBUSR PC Card is inserted all the way to the end of your notebook’s slot.

If you have any questions regarding the TEG-PCBUSR Gigabit Ethernet PC Card, please contact Trendware Technical Support Department.

## **Certifications**

This equipment has been tested and found to comply with FCC and CE Rules. Operation is subject to the following two conditions:

- (1) This device may not cause harmful interference.
- (2) This device must accept any interference received.  
Including interference that may cause undesired operation.

**NOTE:** THE MANUFACTURER IS NOT RESPONSIBLE FOR ANY RADIO OR TV INTERFERENCE CAUSED BY UNAUTHORIZED MODIFICATIONS TO THIS EQUIPMENT. SUCH MODIFICATIONS COULD VOID THE USER’S AUTHORITY TO OPERATE THE EQUIPMENT.





**What's Next in Networking**

## Product Warranty Registration

Please take a moment to register your product online.  
Go to TRENDware's website at <http://www.TRENDNET.com>

## TRENDnet Technical Support

### US/Canada Support Center

**Contact**

**Telephone:** 1(310) 626-6252

**Fax:** 1(310) 626-6267

**Email:** [support@trendnet.com](mailto:support@trendnet.com)

**Tech Support Hours**

7:30am - 6:00pm Pacific Standard Time

Monday - Friday

### European Support Center

**Contact****Telephone**

Deutsch : +49 (0) 6331 / 268-460

Français : +49 (0) 6331 / 268-461

Español : +49 (0) 6331 / 268-462

English : +49 (0) 6331 / 268-463

Italiano : +49 (0) 6331 / 268-464

Dutch : +49 (0) 6331 / 268-465

**Fax:** +49 (0) 6331 / 268-466

**Tech Support Hours**

8:00am - 6:00pm Middle European Time

Monday - Friday

**TRENDware International, Inc.**  
3135 Kashiwa Street. Torrance, CA 90505  
**<http://www.TRENDNET.com>**