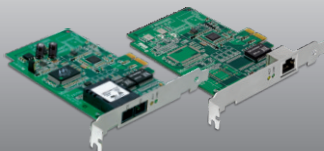


Windows 7 Quick Installation Guide  

TEG-ECTX
TEG-ECSX
1.01

Table of Contents

English	1
1. Before You Start	1
2. Hardware Installation	2
Troubleshooting	4



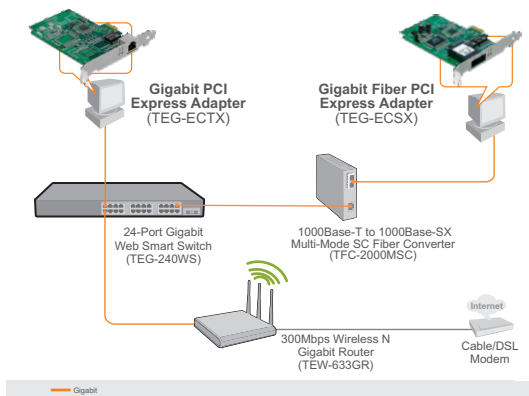
Package Contents

- TEG-ECTX/TEG-ECSX
- Multi-Language Quick Installation Guide
- CD-ROM (Driver & User's Guide)

System Requirements

- PCI Express 1.0a slot
- CPU: 1GHz or above
- Memory: 1GB or above
- RJ-45 Ethernet cable (TEG-ECTX)
- 50/125 μ m or 62.5/125 μ m multi-mode fiber cable (TEG-ECSX)

Application

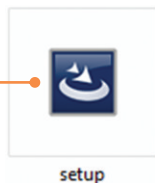


Note:

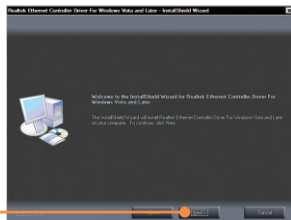
1. DO NOT install the TEG-ECTX/TEG-ECSX in the computer until instructed to do so.
2. You will need to uncompress the drivers after you download it.

1. Go to <http://www.trendnet.com/download>. From the Select Product dropdown list, scroll down until you see TEG-ECTX or TEG-ECSX. Then click Go. Select the hardware version of your TEG-ECTX/TEG-ECSX, click the Windows 7 driver link and save the drivers to your computer.

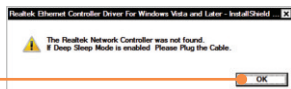
2. Browse the Windows 7 drivers folder until you see the Setup.exe icon. Double click on the setup.exe icon.



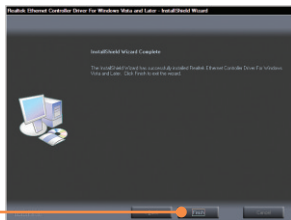
3. Click **Next**. Then follow the **InstallShield Wizard** instructions.



4. Click **OK**.



5. Click **Finish**.



7. **Shutdown** your computer and then open your computer's case.



8. Insert the PCIE card firmly into an available PCIe slot, and then turn **ON** the computer and wait until the Windows desktop appears.



9. Drivers will install automatically.

Your Installation is complete

For detailed information regarding the **TEG-ECTX/TEG-ECSX** configuration and advanced settings, please refer to the Troubleshooting section, User's Guide on the Utility CD-ROM, or TRENDnet's website at <http://www.trendnet.com>.

Register Your Product

To ensure the highest level of customer service and support, please take a moment to register your product Online at: www.trendnet.com/register

Thank you for choosing TRENDnet

Windows doesn't recognize my new hardware. What should I do?

1. Verify that your computer meets the system requirements as specified in **Section 1**.
2. Go to **Start -> Control Panel -> System > Hardware -> Device Manager**. In the list of device types, double-click on **Network Adapters**. If you see the device with a yellow question mark or exclamation point next to it, double-click on it, click on **Drivers** and click **Update Drivers**.
3. If the device manager fails to recognize the presence of a new networking adapter, verify that the network adapter is firmly seated in the PCIE Slot.

Windows recognizes my new hardware, but I'm unable to connect to my network. What should I do?

1. Verify that the cable is securely connected from your switch or router to your network adapter.
2. Verify that the LEDs on your network card are lit. Third, verify that the TCP/IP settings are set to **Obtain an IP address automatically**.

Why am I only getting a network connection speed of 100Mbps instead of 1000Mbps for the TEG-ECTX?

1. Check the Ethernet Cable. Make sure you are using CAT-5e or CAT-6 Ethernet Cables. Some CAT-5 cables are not rated to run in Gigabit.
2. Make sure you are connected to a 1000Mbps switch.

I am not getting a network connection when I connect the TEG-ECSX to my network. What should I do?

1. Check the fiber cable. Make sure you are using 50/125µm or 62.5/125µm multi-mode fiber cable.
2. Make sure that the opposing connection is Gigabit multi-mode fiber connection. The TEG-ECSX will not auto negotiate to 10 or 100Mbps.

What is the maximum distance that is supported by the adapters?

TEG-ECTX: 100 Meters. TEG-ECSX: 550 meters.

If you still encounter problems or have any questions regarding the **TEG-ECTX/TEG-ECSX**, please contact TRENDnet's Technical Support Department.

Certifications

This equipment has been tested and found to comply with FCC and CE Rules.

Operation is subject to the following two conditions:

- (1) This device may not cause harmful interference.
- (2) This device must accept any interference received. Including interference that may cause undesired operation.



Waste electrical and electronic products must not be disposed of with household waste. Please recycle where facilities exist. Check with you Local Authority or Retailer for recycling advice.



NOTE: THE MANUFACTURER IS NOT RESPONSIBLE FOR ANY RADIO OR TV INTERFERENCE CAUSED BY UNAUTHORIZED MODIFICATIONS TO THIS EQUIPMENT. SUCH MODIFICATIONS COULD VOID THE USER'S AUTHORITY TO OPERATE THE EQUIPMENT.

ADVERTENCIA

En todos nuestros equipos se mencionan claramente las características del adaptador de alimentación necesario para su funcionamiento. El uso de un adaptador distinto al mencionado puede producir daños físicos y/o daños al equipo conectado. El adaptador de alimentación debe operar con voltaje y frecuencia de la energía eléctrica domiciliar existente en el país o zona de instalación.



Product Warranty Registration

Please take a moment to register your product online.
Go to TRENDnet's website at <http://www.trendnet.com/register>