

# TEG-448WS

**48-port 10/100/1000Mbps Copper Gigabit Smart Switch (Rack Mount)  
Quick Installation Guide**

**Guide d'installation rapide  
Commutateur intelligent Ethernet Gigabit cuivre  
10/100/1000Mbps à 48 ports (montable sur rack)**

**48-facher 10/100/1000 MBit/s Kupfer-Gigabit-Smart-Switch (Einbau)  
Kurzanleitung zur Installation**

**Guía de instalación rápida del  
Conmutador Smart Gigabit de cobre (Rack Mount) de 48 puertos a 10/100/1000Mbps**

**Version 05.04.2005**



**TRENDnet**<sup>®</sup>  
TRENDware, USA  
**What's Next in Networking**

# Table of Contents

English .....	1
1. Prepare for Installation .....	1
2. Product Detail .....	2
3. Hardware Installation .....	3
4. Verify Installation .....	4
5. Configuring the TEG-448WS .....	5
Troubleshooting .....	10

# English QIG

## 1. Prepare for Installation

Thank you for purchasing the TRENDnet TEG-448WS 48-port 10/100/1000Mbps Copper Gigabit Smart Switch (Rack Mount).

This guide will help you to install and configure the TEG-448WS. Installation should be easy and trouble-free. If you experience any problems, please refer to the Troubleshooting section. If you need further technical assistance, please visit [www.TRENDNET.com](http://www.TRENDNET.com) or contact technical support by phone.

### Verify Package Contents

Please make sure you have everything in the box:



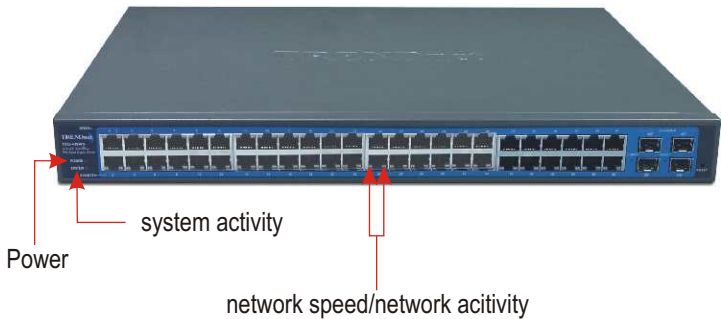
### Minimum System Requirements

Before setting up the TEG-448WS, you should have the following:

1. Workstations with network cards
2. TCP/IP protocol installed in all workstations
3. A web browser such as Internet Explorer or Netscape Navigator
4. A RJ-45 Network Cable to connect your workstations to the TEG-448WS
5. (Optional) 4 Mini-GBIC modules (e.g. TEG-MGBSX)

## 2. Product Detail

The TEG-448WS has 48 10/100/1000 Mbps ports that support auto negotiation and Auto-MDIX. It also has LED's that indicate power, system activity, network speed, and network activity.



### 3. Hardware Installation

Please keep in mind that the site where you install the TEG-448WS may greatly affect its performance. Refer to the User's Guide in the provided CD-ROM for optimal installation.

1. Connect AC Power cord to the back of the TEG-448WS.



2. Using a RJ-45 network cable (CAT 5 cable), connect your workstation to the TEG-448WS.



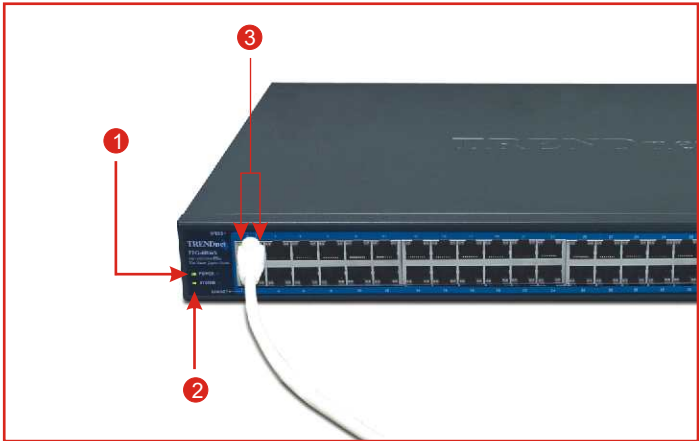
**Congratulations!**  
Installation is now complete.

**Note:** If you would like to verify the TEG-448WS has been properly installed, please go to the Verify Installation section.

## 4. Verify Installation

Verify the following LED display:

1. Make sure that the power LED is on.
2. Verify that the System LED is blinking.
3. Verify that the connected workstation has the Link/Act LED on and a network LED on.

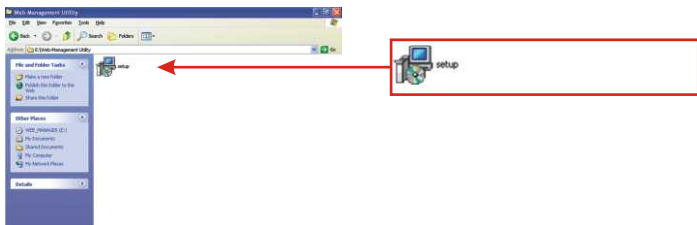


# 5. Configuring the TEG-448WS

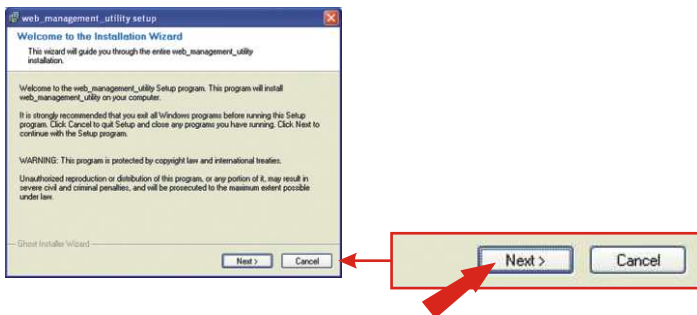
**Note:** For MAC Users, change your computers IP address to 192.168.0.X (where X is an available number from 1-253), and enter http:\\192.168.0.1 in your web browser to access the TEG-448WS Web Utility.

## For Windows Users

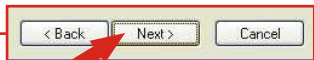
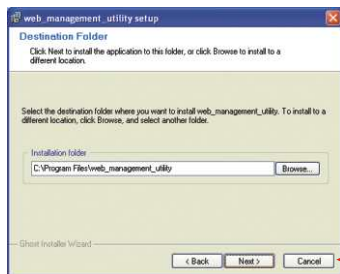
1. Insert the TEG-448WS CD-ROM into your computer's CD-ROM drive.
2. Double-click **My Computer** on your desktop, double-click **CD-ROM**, double-click **Web-Management Utility**, and double click **Setup** to install the Configuration Program.



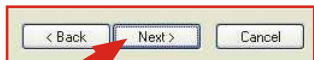
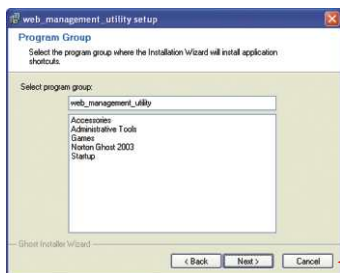
3. Click **Next** to start the installation.



#### 4. Click Next.

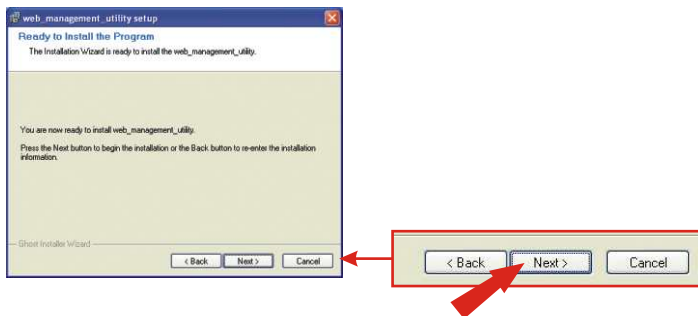


#### 5. Click Next.

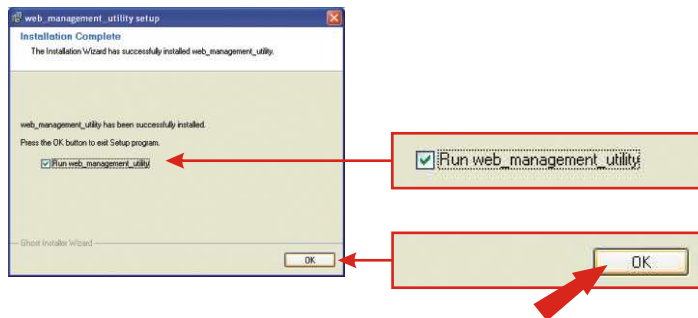




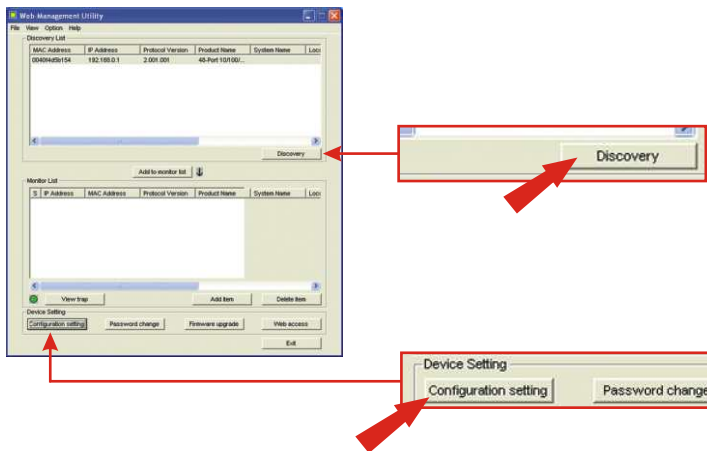
## 6. Click Next.



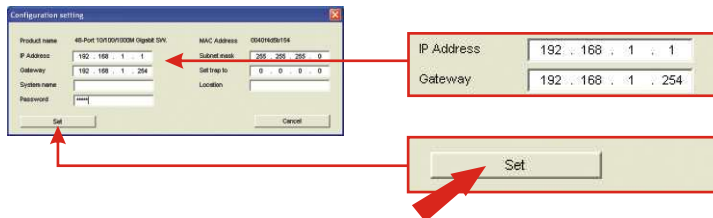
## 7. Check Run web\_management\_utility. Click OK.



8. Click **Discovery**, Click the TEG-448WS, and Click **Configuration Setting**.



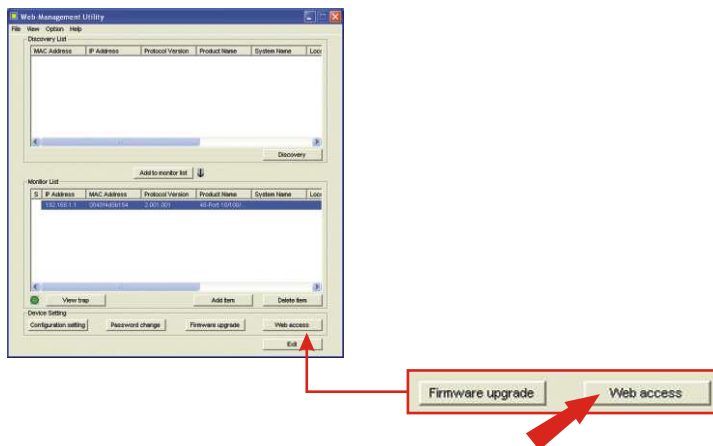
9. In the **Configuration** window, type in the IP Address and Gateway that applies to your network segment, and type **admin** as your password. Click **Set**.



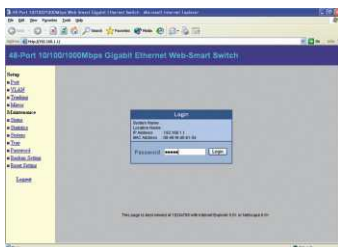
10. Click **OK**.



11. Double-click the TEG-448WS in the **Discovery List**, select the TEG-448WS in the **Monitor List** and Click **Web Access**.



12. Type **admin** to configure the TEG-448WS. For more information on VLAN, Trunking, and other features, please consult the User's Guide in the provided CD-ROM.



Your TEG-448WS is ready to use.

# Troubleshooting

## **Q1. How come I cannot see any light from any of my LED's?**

**A1.** Your TEG-448WS Web Smart Switch is not getting any power. Make sure that your surge protector or your outlet is getting power and make sure that the AC Power cord is properly connected to your TEG-448WS.

## **Q2. I typed "admin" in the password field, but I still cannot configure my TEG-448WS IP address.**

**A2.** Make sure that CAPSLOCK is turned off before you type in admin in the password field. Password is case sensitive.

## **Q3. My current network card operates at 100Mbps. How can I upgrade my workstation to 1000Mbps?**

**A3.** TRENDware provides Gigabit solutions to help you upgrade your workstation. For PCs, we recommend using the TEG-PCITXR or the TEG-PCITXM2. For notebooks, we recommend using the TEG-PCBUSR.

## **Q4. In section 5. Configuring the TEG-448WS (step 11), I get polling error 10065. What do I do?**

**A4.** Go back to step 9 in section 5. Configuring the TEG-448WS, and change the IP settings to match your PC's network segment.

If you have any questions regarding the TEG-448WS Web Smart Gigabit Switch please contact Trendware Technical Support Department.

## **Certifications**

This equipment has been tested and found to comply with FCC and CE Rules. Operation is subject to the following two conditions:

- (1) This device may not cause harmful interference.
- (2) This device must accept any interference received.  
Including interference that may cause undesired operation.

**NOTE:** THE MANUFACTURER IS NOT RESPONSIBLE FOR ANY RADIO OR TV INTERFERENCE CAUSED BY UNAUTHORIZED MODIFICATIONS TO THIS EQUIPMENT. SUCH MODIFICATIONS COULD VOID THE USER'S AUTHORITY TO OPERATE THE EQUIPMENT.





**What's Next in Networking**

## Product Warranty Registration

Please take a moment to register your product online.  
Go to TRENDware's website at <http://www.TRENDNET.com>

## TRENDnet Technical Support

### US/Canada Support Center

**Contact**

**Telephone:** 1(310) 626-6252

**Fax:** 1(310) 626-6267

**Email:** [support@trendnet.com](mailto:support@trendnet.com)

**Tech Support Hours**

7:30am - 6:00pm Pacific Standard Time  
Monday - Friday

### European Support Center

**Contact****Telephone**

Deutsch : +49 (0) 6331 / 268-460

Français : +49 (0) 6331 / 268-461

Español : +49 (0) 6331 / 268-462

English : +49 (0) 6331 / 268-463

Italiano : +49 (0) 6331 / 268-464

Dutch : +49 (0) 6331 / 268-465

**Fax:** +49 (0) 6331 / 268-466

**Tech Support Hours**

8:00am - 6:00pm Middle European Time  
Monday - Friday

**TRENDware International, Inc.**  
3135 Kashiwa Street. Torrance, CA 90505  
**<http://www.TRENDNET.com>**