

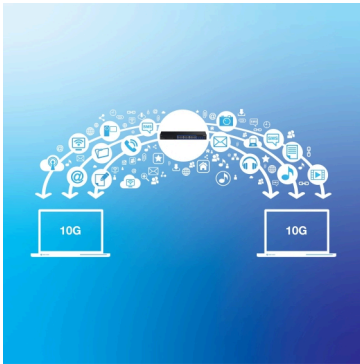


## 28-Port Gigabit Switch with 4 x 10G SFP+Ports

TEG-30262 (v2.xR)

- 24 x Gigabit ports
- 4 x 10G SFP+ ports
- 128Gbps switching capacity
- 1U rack mountable (brackets included)
- Fanless design
- Lifetime Warranty
- NDAA / TAA compliant (U.S. and Canada only)

TRENDnet's 28-Port Gigabit Switch with 4 x 10G SFP+Ports, model TEG-30262, provides high bandwidth performance, ease of use, and reliability. This switch offers four dedicated 10G fiber SFP+ ports for high-speed network connections, providing a cost-effective solution in adding 10G link capability to an SMB network. With a sturdy metal housing and included rackmount brackets, this switch is well-suited for 19" 1U rack installations.



### 10G SFP+ Ports

Offers four dedicated 10G SFP+ ports and 24 gigabit RJ-45 ports for high-speed network connections, providing a cost-effective solution to any network.



### Fanless

Fanless design lowers energy consumption and eliminates operating noise.



### Rackmount Design

With a sturdy metal housing and included rackmount brackets, this switch is well-suited for 19" 1U rack installations.

## FEATURES



#### Multi-Gig Ports

24 x Gigabit RJ-45 ports and 4 x 10G SFP+ fiber ports for high-speed connections



#### Switching Capacity

128Gbps switching capacity



#### Jumbo Frame

Sends larger packets, or jumbo frames (up to 12KB), for increased performance



#### VLAN Passthrough

Supports VLAN tag passthrough traffic



#### Housing Design

Sturdy rack mountable metal housing with included mounting kit



#### Fanless

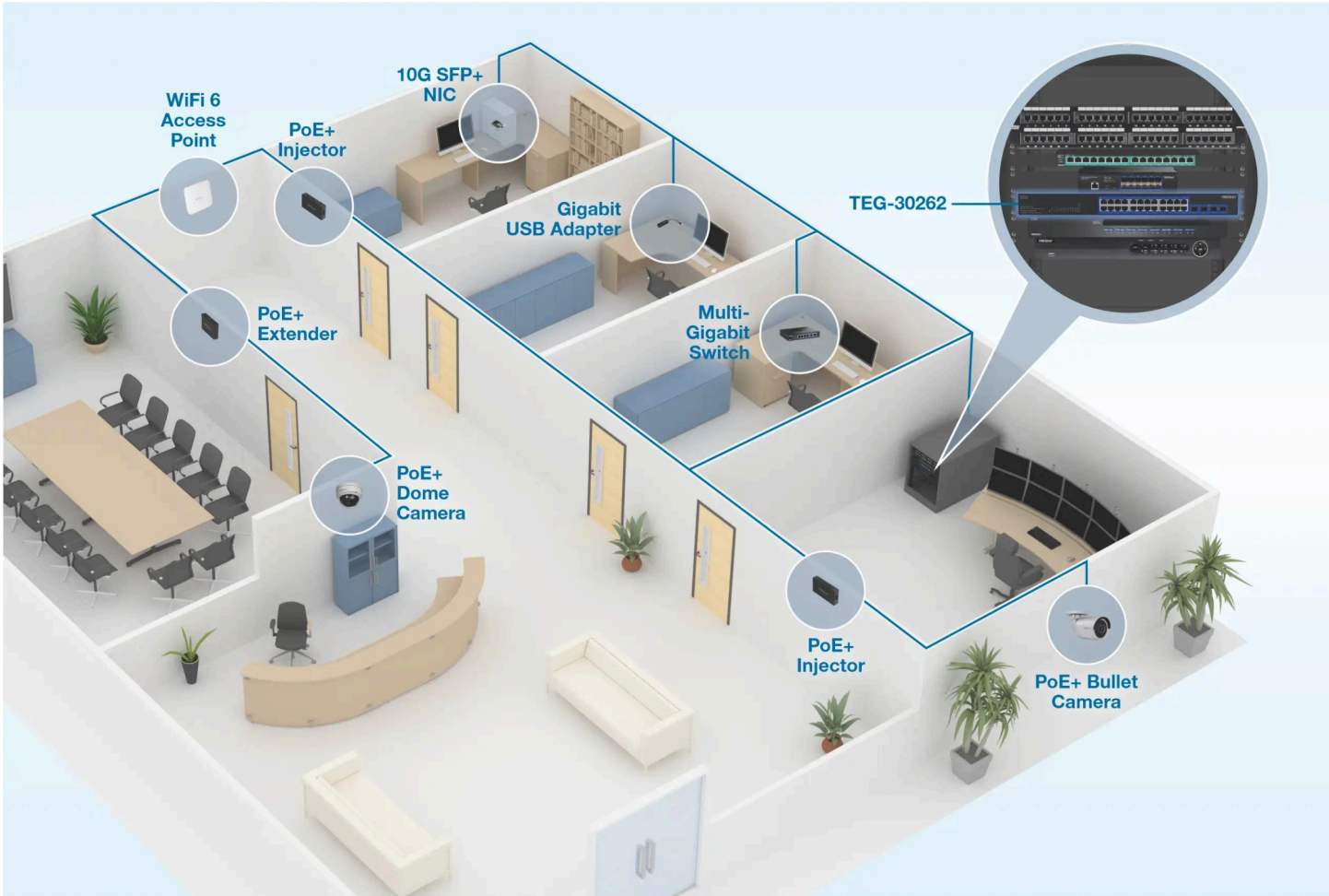
Fanless design lowers energy consumption and eliminates operating noise



#### LED Indicators

LEDs convey port status

## NETWORKING SOLUTION



## SPECIFICATIONS

### Standards

- IEEE 802.3
- IEEE 802.3u
- IEEE 802.3ab
- IEEE 802.3x
- IEEE 802.3ae
- IEEE 802.3az

### Device Interface

- 24 x Gigabit ports
- 4 x 10G SFP+ ports
- LED indicators

### Data Transfer Rate

- Ethernet: 10Mbps (half duplex), 20Mbps (full duplex)
- Fast Ethernet: 100Mbps (half duplex), 200Mbps (full duplex)
- Gigabit Ethernet: 2Gbps (full duplex)
- Gigabit SFP: 2Gbps (full duplex)
- 10G SFP+: 20Gbps (full duplex)

### Performance

- Switching Capacity: 128Gbps
- RAM Buffer: 1.5MB
- MAC Address Table: 16K entries
- Forwarding Rate: 95.2Mpps (64-byte packet size)
- Jumbo Frames: 12KB

### Power

- Input: 100 – 240V AC, 50/60Hz, internal power supply
- Max. Consumption: 18.9W

### Fan/Acoustics

- Fanless design

### Operating Temperature

- 0° – 40° C (32° – 104° F)

### Operating Humidity

- Max. 90% non-condensing

### Dimensions

- 441 x 131 x 44mm (17.3 x 5.1 x 1.73 in.)

### Weight

- 1.935kg (4.27 lbs.)

### Certifications

- CE
- FCC
- ETL

### Warranty

- Lifetime Warranty

### Package Contents

- TEG-30262
- Rackmount kit
- Power cord (1.8m/6 ft.)

All references to speed are for comparison purposes only. Product specifications, size, and shape are subject to change without notice, and actual product appearance may differ from that depicted herein.

TRENDnet offers a lifetime warranty for all of its metal-enclosed network switches that have been purchased in the United States/Canada on or after 1/1/2015. Cooling fan and internal power supply carry a one-year warranty.