

100Base-FX SC Connector PCI Fast Ethernet Fiber Adapter

TE100-PCIFXplus

The PCI Fiber Optic Adapter operates in a 32-bit Bus Master Mode, delivering 100Mbps of speed with little stress on the host's CPU. The TE100-PCIFXplus supports both half- and full-duplex modes, creating an increase speed up to 200Mbps. With its SC-type fiber connection allowing up to 2Km away from the switch, TRENDnet's TE100-PCIFXplus is the perfect choice for greater bandwidth and long cable connections in the network.

- FEATURES**
- Complies with IEEE 802.3u 100Base-FX standard
 - Meets PCI Specification Rev. 2.2
 - 32-bit PCI Bus Master operation
 - 100Mbps Fast Ethernet connection
 - Supports half- and full-duplex modes
 - Supports 2Km fiber cable long transfer distance
 - Auto-assignment of IRQ and I/O address
 - Easy-to-view diagnostic LEDs
 - Supports Wake-On-LAN (WOL). 3-wire WOL cable included
 - Supports Desktop Management Interface (DMI)
 - 5-Year Warranty

- BENEFITS**
- Performance:**
Operates in the 32-bit bus master mode, and transfers data directly to/from the host's memory.
- Expandability:**
Uses standard SC type fiber connector for easy and reliable connection.
- Flexibility:**
Supports all major network operating systems.
- Reliability:**
With 100/200Mbps speeds, our TE100-PCIFXplus offers a lifetime warranty.

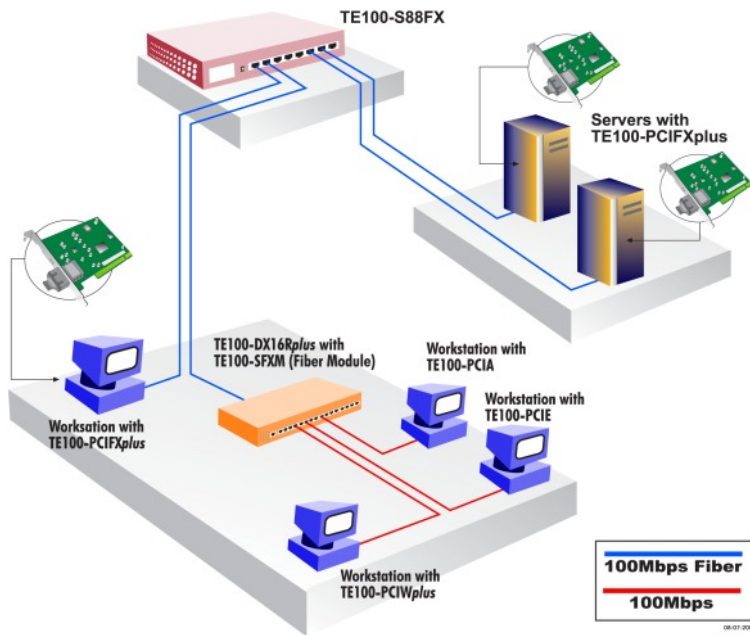
100Base-FX SC Connector PCI Fast Ethernet Fiber Adapter

TE100-PCIFXplus

SPECIFICATIONS

Hardware	
Standards	• IEEE 802.3 _u 100Base-FX
Data Transfer Rate	• 100Mbps (half-duplex) / 200Mbps (full-duplex)
Protocol	• CSMA/CD
Connectors	• Multimode SC fiber connector
Diagnostic LEDs	• Link and Activity
Network Drivers	• Novell Netware 3.x/4.x, ODI driver, NetWare Client 32, Windows for Workgroups, Windows 95/98/2000/NT/XP, IBM OS/2 Warp Server, Linux, NDIS driver, and other major network operating systems
Power Consumption	• 5 VDC, 700mA Max
Dimensions	• 135 x 121 mm (5.31 x 4.76 inches)
Weight	• 85 g (3 oz)
Temperature	• Operating: 0° to 40°C (32°F to 104°F) • Storage: -25° to 70°C (-13°F to 158°F)
Humidity	• 10% to 90% (non-condensing)
Certifications	• FCC, CE, VCC1

NETWORKING SOLUTIONS



RELATED PRODUCTS

TE100-PCIFXplus	100Base-FX SC Connector PCI Fast Ethernet Fiber Adapter
TE100-S88FX	8-port 100Base-FX Switch with SC Connector
TE100-S86FX	2-port 10/100Base-TX and 6-port 100Base-FX Switch with SC Connector
TE100-S81FX	7-port 10/100Base-TX and 1-port 100Base-FX Mini Fiber Switch
TE100-TF	ProXpress 100Mbps Fast Ethernet Transceiver

ORDERING INFORMATION

TRENDnet®

20675 Manhattan Place, Torrance, CA 90501 USA

Tel: 1-310-961-5500

Fax: 1-310-961-5511

Web: www.trendnet.com

Email: sales@trendnet.com

To Order Please Call:

1-888-326-6061

