

TRENDnet[®]



Quick Installation Guide

TBW-110UB (V1)

Table of Contents

1 Português

1. Antes de começar
2. Instalação com Windows® OS
3. Emparelhe seus dispositivos Bluetooth

1. Antes de começar

Conteúdo da embalagem

- TBW-110UB
- Quick Installation Guide
- CD-ROM (Driver & Guia do Utilizador)

Requerimentos do Sistema

- Computador com porta USB 2.0 ou acima
- Compatibilidade do Sistema Operacional Bluetooth:
Windows® 10, 8.1, 7

2. Instalação com Windows®

1. Insira o CD de instalação incluído na unidade de CD-ROM do seu computador.

Nota: Se você não possui o CD-ROM incluído, você pode baixar os drivers de [www.http://www.trendnet.com/support/](http://www.trendnet.com/support/)

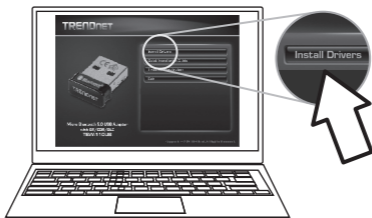


2. Na janela de prompt de Autorun do CD, clique em executar Autorun.exe.

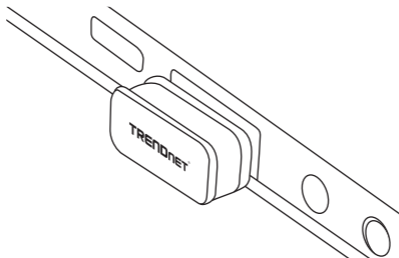
Nota: Se o Autorun não aparecer automaticamente, abra o conteúdo do CD e clique duas vezes em Autorun.exe.

3. No menu principal do CD-ROM, clique em **Install WiFi Driver (Instalar WiFi Driver)**.

Nota: Recomendamos que os usuários desabilitem primeiro os adaptadores WiFi e Bluetooth, pois podem interferir nas TBW-110UB.



4. Siga as instruções do Assistente de Instalação e reinicie o computador assim que a instalação estiver concluída. Depois que o computador for reiniciado, conecte o adaptador USB Wireless N150/Bluetooth USB a um porto USB disponível em seu computador.




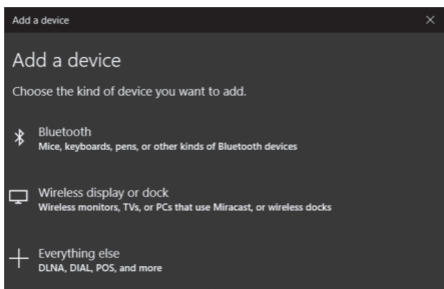
LED Link / Atividade

LED está aceso	Se o LED está aceso, o adaptador de rede foi instalado com sucesso.
LED está apagado	Se o LED está apagado, o adaptador de rede não foi instalado corretamente.

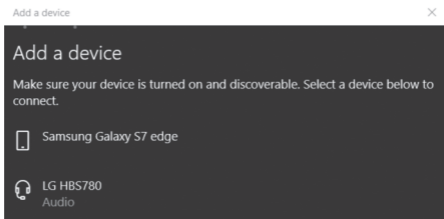
3. Emparelhe seus dispositivos Bluetooth

Esta seção descreve como emparelhar seu computador com um dispositivo Bluetooth usando TBW-110UB. (Windows 10)

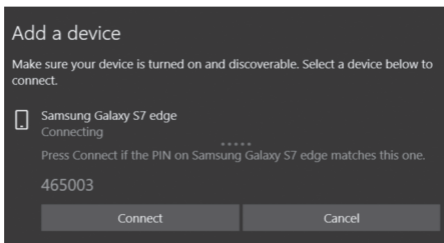
1. Clique no ícone do Windows  no canto inferior esquerdo da tela e selecione as configurações.
2. Na página de configurações, selecione **Dispositivos**.
3. Certifique-se de que o **Bluetooth** esteja Ligado e, em seguida, clique em **Adicionar Bluetooth ou outros dispositivos**.
4. Selecione **Bluetooth** na página **Adicionar um dispositivo**. Seu computador começará a procurar os dispositivos Bluetooth.



5. Uma vez que os dispositivos Bluetooth próximos a você são descobertos, selecione o dispositivo com o qual você deseja emparelhar.



6. Um PIN de segurança será exibido tanto em el equipo como en el Dispositivo habilitado para Bluetooth. Confirme que os PINs são idênticos antes de selecionar para se conectar em seu computador e em seus dispositivos Bluetooth.



7. A janela do dispositivo irá alertá-lo quando a conexão Bluetooth for estabelecida com sucesso.



Federal Communication Commission Interference Statement

This equipment has been tested and found to comply with the limits for a Class B digital device, pursuant to Part 15 of FCC Rules. These limits are designed to provide reasonable protection against harmful interference in a residential installation. This equipment generates, uses, and can radiate radio frequency energy and, if not installed and used in accordance with the instructions, may cause harmful interference to radio communications. However, there is no guarantee that interference will not occur in a particular installation. If this equipment does cause harmful interference to radio or television reception, which can be determined by turning the equipment off and on, the user is encouraged to try to correct the interference by one or more of the following measures:

- 1.Reorient or relocate the receiving antenna.
- 2.Increase the separation between the equipment and receiver.
- 3.Connect the equipment into an outlet on a circuit different from that to which the receiver is connected.
- 4.Consult the dealer or an experienced radio technician for help.

FCC Caution

This device and its antenna must not be co-located or operating in conjunction with any other antenna or transmitter.

Federal Communications Commission (FCC) Radiation Exposure Statement

This equipment complies with FCC radiation exposure limits set forth for an uncontrolled environment. This equipment should be installed and operated with minimum distance 5mm between the radiator & your body.

Canada, ISED notice:

This device complies with Industry Canada's licence-exempt RSSs. Operation is subject to the following two conditions:

- (1)This device may not cause interference; and
- (2)This device must accept any interference, including interference that may cause undesired operation of the device.

The products are compliant with SAR for general population/uncontrolled exposure limits in IC RSS-102 and has been tested in accordance with the measurement methods and procedures specified in IEEE 1528. Maintain at least 5mm distance for body-worn condition.

This transmitter must not be co-located or operating in conjunction with any other antenna or transmitter. This equipment should be installed and operated with a minimum distance of 0.5 centimeters between the radiator and your body.

Canada, ISED avis:

Le présent appareil est conforme aux CNR d'Industrie Canada applicables aux appareils radio exempts de licence. L'exploitation est autorisée aux deux conditions suivantes :

- (1)l'appareil ne doit pas produire de brouillage;
- (2)l'utilisateur de l'appareil doit accepter tout brouillage radioélectrique subi, même si le brouillage est susceptible d'en compromettre le fonctionnement.

Le produit est le respect de SAR pour la population générale / limites d'exposition incontrôlée de CNR-102 et a été testé en conformité avec les méthodes et procédures de mesure spécifiées dans la norme IEEE 1528. Maintenir au moins 5mm à distance pour la condition physique-garde.

Cet émetteur ne doit pas être Co-placé ou ne fonctionnant en même temps qu'aucune autre antenne ou émetteur. Cet équipement devrait être installé et actionné avec une distance minimum de 0.5 centimètres entre le radiateur et votre corps.

RED Compliance Statement

This equipment should be installed and operated with minimum distance 5mm between the radiator & your body. Compliance with 2014/53/EU Radio Equipment Directive (RED)

In accordance with Article 10.8(a) and 10.8(b) of the RED, the following table provides information on the frequency bands used and the maximum RF transmit power of the product for sale in the EU:

Frequency range (MHz)	Max. transmit power (dBm)
2412-2472	9.98 dBm

Certifications

This device complies with Part 15 of the FCC Rules. Operation is subject to the following two conditions:

- (1) This device may not cause harmful interference.
- (2) This device must accept any interference received. Including interference that may cause undesired operation.



Applies to PoE Products Only: This product is to be connected only to PoE networks without routing to the outside plant.

Note

The Manufacturer is not responsible for any radio or TV interference caused by unauthorized modifications to this equipment. Such modifications could void the user's authority to operate the equipment.

Advertencia

En todos nuestros equipos se mencionan claramente las características del adaptador de alimentación necesario para su funcionamiento. El uso de un adaptador distinto al mencionado puede producir daños físicos y/o daños al equipo conectado. El adaptador de alimentación debe operar con voltaje y frecuencia de la energía eléctrica domiciliaria existente en el país o zona de instalación.



Waste electrical and electronic products must not be disposed of with household waste. Please recycle where facilities exist. Check with your Local Authority or Retailer for recycling advice.

Technical Support

If you have any questions regarding the product installation, please contact our Technical Support.

Toll free US/Canada: **1-866-845-3673**

Regional phone numbers available at www.trendnet.com/support

Product Warranty Registration

Please take a moment to register your product online. Go to TRENDnet's website at:

www.trendnet.com/register

TRENDnet

20675 Manhattan Place
Torrance, CA 90501
USA