

TRENDnet[®]



Quick Installation Guide

TBW-110UB (V1)

Table of Contents

1 Italiano

1. Prima di cominciare
2. Installazione Windows® OS
3. Abbinare i tuoi dispositivi Bluetooth

1. Prima di cominciare

Contenuto della confezione

- TBW-110UB
- Guida di installazione rapida
- CD-ROM (Driver e Guida Utente)

Requisiti di sistema

- Computer con porta USB 2.0 o superiore
- Compatibilità del sistema operativo Bluetooth:
Windows® 10, 8.1, 7

2. Installazione Windows® OS

1. Inserite il CD di installazione incluso all'interno del drive CD-ROM del vostro computer.

Nota: Se non disponi del CD-ROM incluso, puoi scaricare i driver da <http://www.trendnet.com/support/>

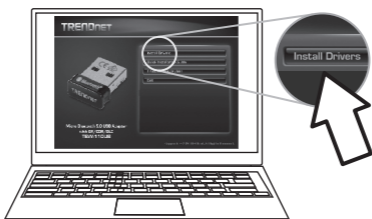


2. Quando si apre la finestra CD Autorun Prompt, clicca su Esegui Autorun.exe.

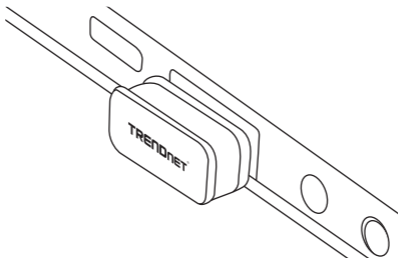
Nota: Se il comando Autorun non viene visualizzato automaticamente, aprire l'indice del CD e fare doppio-clic su Autorun.exe.

3. Nel menu principale del CD-ROM, clicca su **Installa WiFi Driver**.

Nota: Si consiglia agli utenti di disabilitare precedentemente le chiavette o le schede Bluetooth e Wi-Fi collegati al sistema in quanto potrebbero interferire con le TBW-110UB.



4. Segui le istruzioni della Guida rapida InstallShield e riavvia il computer una volta che l'installazione è completata. Dopo che il computer è stato riavviato, collega l'Adattatore USB N150 Wireless / Bluetooth all'interno dello porta USB sul tuo computer.




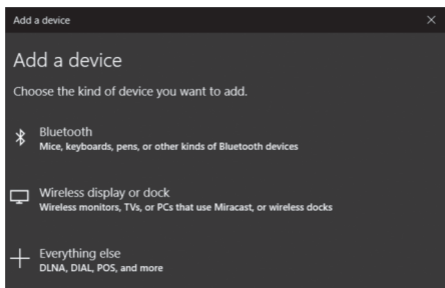
Collegamento / Funzione LED

LED è acceso	Quando il LED è acceso, la scheda di rete è stata installata correttamente.
LED è spento	Quando il LED è spento, la scheda di rete non è stata installata correttamente.

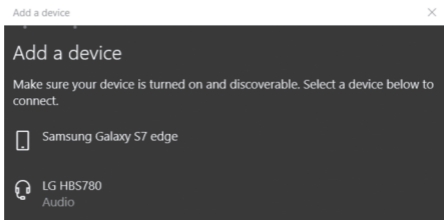
3. Abbinare i tuoi dispositivi Bluetooth

Questa sezione descrive come abbinare il tuo computer con un dispositivo Bluetooth utilizzando TBW-110UB. (Windows 10)

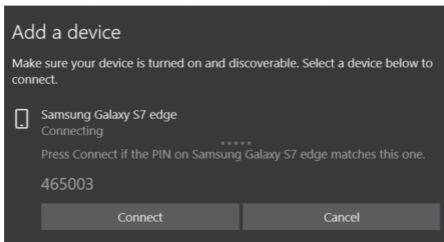
1. Clicca sull'icona di Windows  nell'angolo in basso a sinistra dello schermo e seleziona settings (impostazioni).
2. Nella pagina settings (impostazioni), seleziona **Devices** (Dispositivi).
3. Assicurati che il Bluetooth sia **On** (Acceso), successivamente clicca su **Add Bluetooth or other devices** (**Aggiungi Bluetooth o altri dispositivi**).
4. Seleziona **Bluetooth** nella pagina **Add a device** (**Aggiungi un dispositivo**). Il tuo computer inizierà la ricerca dei dispositivi Bluetooth rilevabili.



5. Una volta che i dispositivi Bluetooth attivi nel raggio d'azione del computer sono rilevati, seleziona il dispositivo con il quale ci si desidera abbinare.



6. Un pin di sicurezza verrà visualizzato sia sul computer che sul Dispositivo Bluetooth abilitato. Verifica che i PIN siano identici prima di selezionare la connessione sia sul computer sia sul dispositivo Bluetooth.



7. La finestra del dispositivo ti avviserà quando la connessione Bluetooth è eseguita correttamente.



Federal Communication Commission Interference Statement

This equipment has been tested and found to comply with the limits for a Class B digital device, pursuant to Part 15 of FCC Rules. These limits are designed to provide reasonable protection against harmful interference in a residential installation. This equipment generates, uses, and can radiate radio frequency energy and, if not installed and used in accordance with the instructions, may cause harmful interference to radio communications. However, there is no guarantee that interference will not occur in a particular installation. If this equipment does cause harmful interference to radio or television reception, which can be determined by turning the equipment off and on, the user is encouraged to try to correct the interference by one or more of the following measures:

- 1.Reorient or relocate the receiving antenna.
- 2.Increase the separation between the equipment and receiver.
- 3.Connect the equipment into an outlet on a circuit different from that to which the receiver is connected.
- 4.Consult the dealer or an experienced radio technician for help.

FCC Caution

This device and its antenna must not be co-located or operating in conjunction with any other antenna or transmitter.

Federal Communications Commission (FCC) Radiation Exposure Statement

This equipment complies with FCC radiation exposure limits set forth for an uncontrolled environment. This equipment should be installed and operated with minimum distance 5mm between the radiator & your body.

Canada, ISED notice:

This device complies with Industry Canada's licence-exempt RSSs. Operation is subject to the following two conditions:

- (1)This device may not cause interference; and
- (2)This device must accept any interference, including interference that may cause undesired operation of the device.

The products are compliant with SAR for general population/uncontrolled exposure limits in IC RSS-102 and has been tested in accordance with the measurement methods and procedures specified in IEEE 1528. Maintain at least 5mm distance for body-worn condition.

This transmitter must not be co-located or operating in conjunction with any other antenna or transmitter. This equipment should be installed and operated with a minimum distance of 0.5 centimeters between the radiator and your body.

Canada, ISED avis:

Le présent appareil est conforme aux CNR d'Industrie Canada applicables aux appareils radio exempts de licence. L'exploitation est autorisée aux deux conditions suivantes :

- (1)l'appareil ne doit pas produire de brouillage;
- (2)l'utilisateur de l'appareil doit accepter tout brouillage radioélectrique subi, même si le brouillage est susceptible d'en compromettre le fonctionnement.

Le produit est le respect de SAR pour la population générale / limites d'exposition incontrôlée de CNR-102 et a été testé en conformité avec les méthodes et procédures de mesure spécifiées dans la norme IEEE 1528. Maintenir au moins 5mm à distance pour la condition physique-garde.

Cet émetteur ne doit pas être Co-placé ou ne fonctionnant en même temps qu'aucune autre antenne ou émetteur. Cet équipement devrait être installé et actionné avec une distance minimum de 0.5 centimètres entre le radiateur et votre corps.

RED Compliance Statement

This equipment should be installed and operated with minimum distance 5mm between the radiator & your body. Compliance with 2014/53/EU Radio Equipment Directive (RED)

In accordance with Article 10.8(a) and 10.8(b) of the RED, the following table provides information on the frequency bands used and the maximum RF transmit power of the product for sale in the EU:

Frequency range (MHz)	Max. transmit power (dBm)
2412-2472	9.98 dBm

Certifications

This device complies with Part 15 of the FCC Rules. Operation is subject to the following two conditions:

- (1) This device may not cause harmful interference.
- (2) This device must accept any interference received. Including interference that may cause undesired operation.



Waste electrical and electronic products must not be disposed of with household waste. Please recycle where facilities exist. Check with your Local Authority or Retailer for recycling advice.

Technical Support

If you have any questions regarding the product installation, please contact our Technical Support.

Toll free US/Canada: **1-866-845-3673**

Regional phone numbers available at www.trendnet.com/support

TRENDnet

20675 Manhattan Place
Torrance, CA 90501
USA

Applies to PoE Products Only: This product is to be connected only to PoE networks without routing to the outside plant.

Note

The Manufacturer is not responsible for any radio or TV interference caused by unauthorized modifications to this equipment. Such modifications could void the user's authority to operate the equipment.

Advertencia

En todos nuestros equipos se mencionan claramente las características del adaptador de alimentación necesario para su funcionamiento. El uso de un adaptador distinto al mencionado puede producir daños físicos y/o daños al equipo conectado. El adaptador de alimentación debe operar con voltaje y frecuencia de la energía eléctrica domiciliar existente en el país o zona de instalación.

Product Warranty Registration

Please take a moment to register your product online. Go to TRENDnet's website at:

www.trendnet.com/register