

# TBW-102UB

## Bluetooth USB Adapter

### Quick Installation Guide

Version 1.15.04



Copyright ©2004. All Rights Reserved. TRENDware International, Inc.

## 1. Prepare for Installation

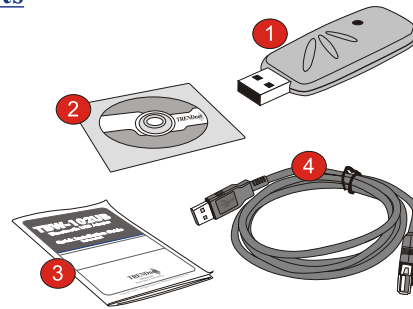
Thank you for purchasing the TBW-102UB High-Power Bluetooth USB Adapter. With this adapter you will be able to share your files, resources or internet connection between multiple Bluetooth enabled machines.

This guide will help you set-up and configure your Bluetooth adapter. Following the installation instructions should be quick and easy. If you run into problems, please refer to the Troubleshooting section or User's Guide on the CD-ROM. If you need further technical support, please visit [www.trendnet.com](http://www.trendnet.com) or call our support by phone.

### Verify Package Contents

Please check to make sure you have everything in the box:

1. TBW-102UB
2. Utility CD-ROM
3. Quick Installation Guide
4. USB A-B Cable

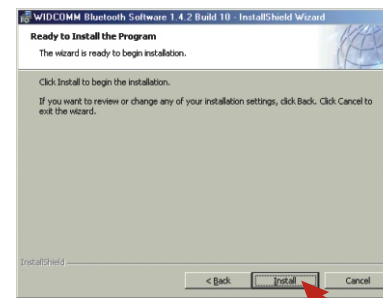


### Verify Equipment

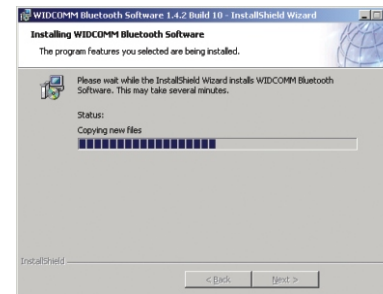
Before installing the Bluetooth adapter you should have:

- Computer with Windows 98SE, ME, 2000 or XP installed
- Computer with one USB 1.1 port available
- Computer with CD-ROM Drive

7. Click **Install** to start the utility installation.



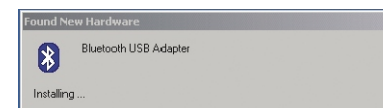
8. Windows will start installing the utility.



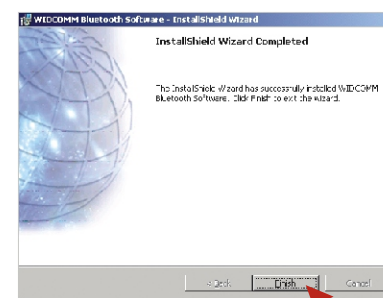
Windows 98SE users will see the following message. Insert your Windows 98SE operating system CD into your CD-ROM drive and click **OK** and select the CD-ROM to allow system to update some files into your machine.



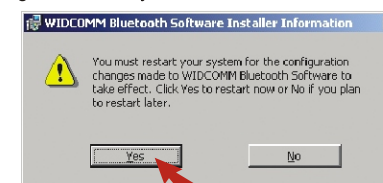
11. Once the Bluetooth USB Adapter is inserted properly, the following window will appear and the Bluetooth USB Adapter's driver will install automatically by Windows.



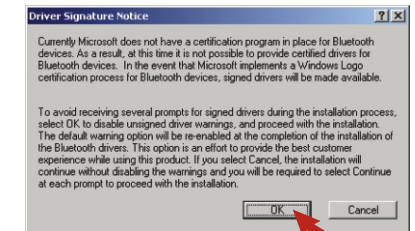
12. Click **Finish** to complete the Utility Installation.



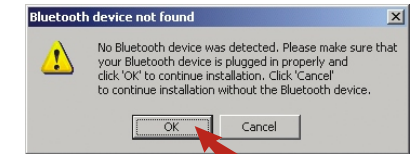
Note: For Windows 98SE/ME/2000 users, the Windows will prompt you with a message to restart your PC. Click **Yes** to restart the computer.



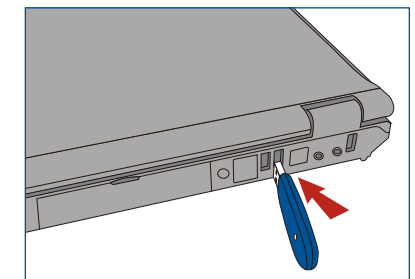
Windows 2000/XP users will see the following message. Click **OK** to continue.



9. During the installation, the following window will appear.



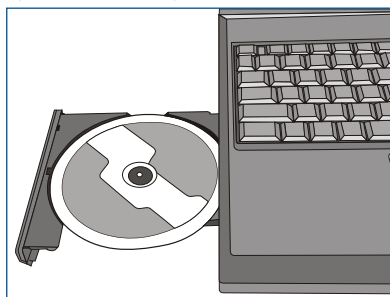
10. When you see the above message, insert the Bluetooth USB Adapter into your USB port and click **OK** to continue.



## 2. Install Bluetooth Utility

Note: The Bluetooth Utility program has to be installed before installing the Bluetooth USB Adapter.

1. Turn on the Computer.
2. Insert the Utility CD-ROM into your CD-ROM Drive.



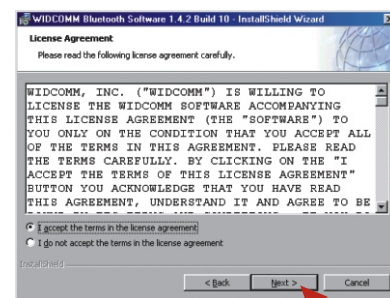
3. The Auto-Run function will automatically start the software installation wizard. If the Auto-Run function does not start automatically, please open the installation CD to find "Setup.exe" file and double-click the setup.exe file to continue.

4. Bluetooth Utility Setup window appears, click **Next** to continue.

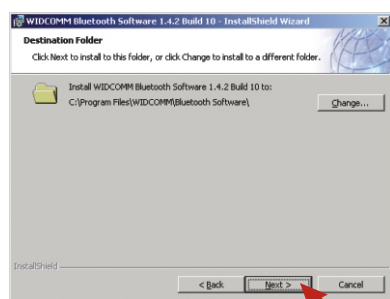


2

5. The License Agreement Window appears. Read through the license agreement and select **I accept the terms in the license agreement** and click **Next**.



6. Click **Next** to continue.



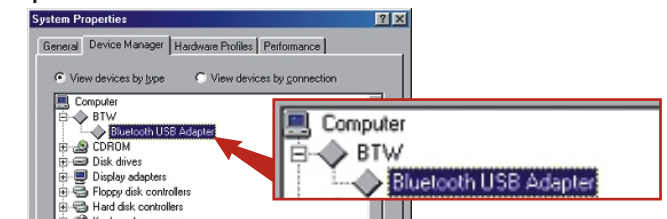
3

## 3. Check USB Adapter Installation Status

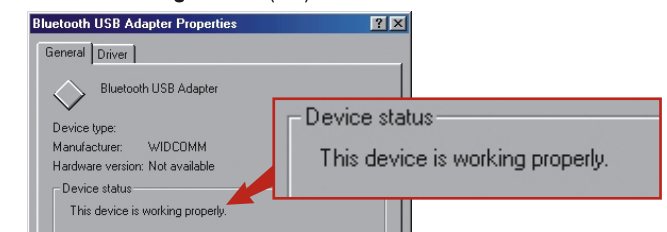
This section is to ensure your computer is installed with Bluetooth USB Adapter and the adapter is working properly.

### Windows 98SE/ME

1. Find Start Button located on Desktop.
2. Click **Start**, Click **Settings** and then click on **Control Panel**.
3. Double-Click the **System Icon** and the System Properties Box will appear.
4. Go to the **Device Manager** tab, Double-Click on **BTW**, **Bluetooth USB Adapter** will show under this section.



5. Right Click on the **Bluetooth USB Adapter** and Select **Properties**. The Device Status will show **This device is working properly**. If it doesn't, go to **Troubleshooting** section (Q1).

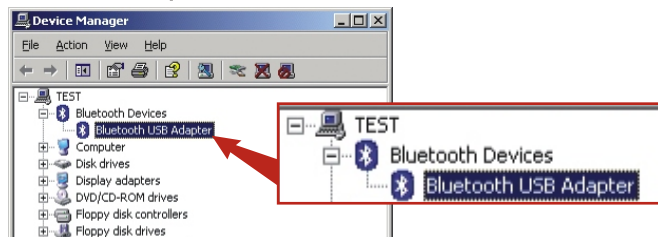


6. Now we can confirm the Bluetooth USB Adapter is properly installed on this machine and is ready to use.

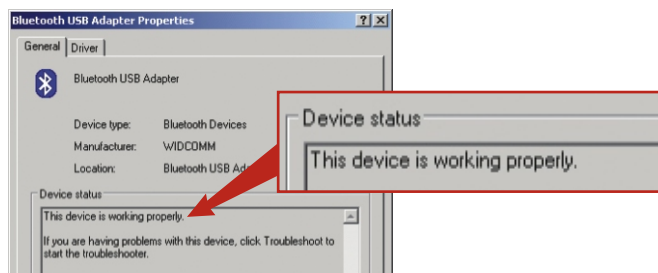
7

## Windows 2000/XP

1. Find Start Button located on Desktop.
2. Click **Start**, Click **Settings** and then Click **Control Panel**.
3. Double-Click the **System** Icon and the **System Properties** box will appear.
4. Go to **Hardware** Tab, click on the **Device Manager** button, Device Manager Window will appear. Double-Click on **Bluetooth Devices**, **Bluetooth USB Adapter** will show under this section.



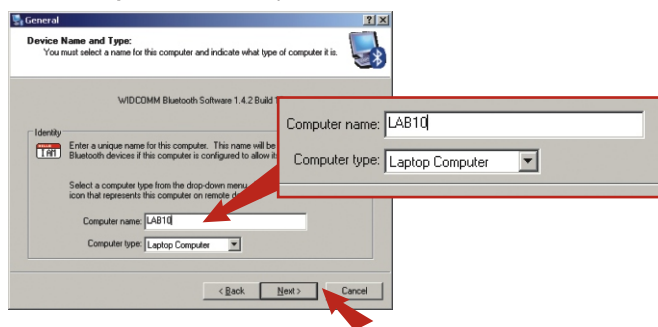
5. Right-Click on the **Bluetooth USB Adapter** and go to **Properties**, the following window appears. The Device Status will show **This device is working properly**. If it doesn't, go to **Troubleshooting** section (Q1).



6. Now we can confirm the Bluetooth USB Adapter is properly installed in this machine and is ready to use.

8

3. This window will show your computer's name and computer type. If you are using a laptop, select **Laptop Computer** for Computer type or select **Personal Computer** for Desktop PC. Click **Next** to continue.



4. Initial Bluetooth Configuration Wizard will appear, click **Next** to continue.



10

## 4. Configure Bluetooth Settings

This section helps you to initialize the Bluetooth Settings and Enable the features you need before you start using the Bluetooth USB Adapter.

1. On the Desktop, find the **Bluetooth Icon** on the tool bar.

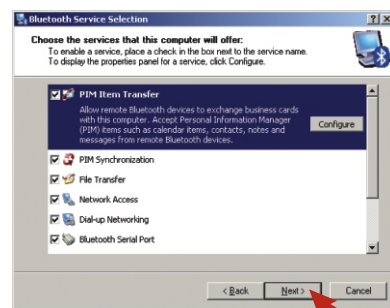


2. Double-Click the **Bluetooth Icon** and the following window will appear, click on the **Next** button to continue

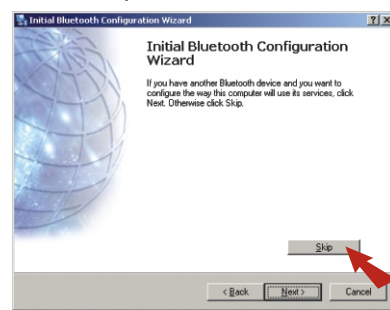


9

5. Select or De-select the features you will or will not use with the Bluetooth USB Adapter and click **Next**. (All features are selected by default)

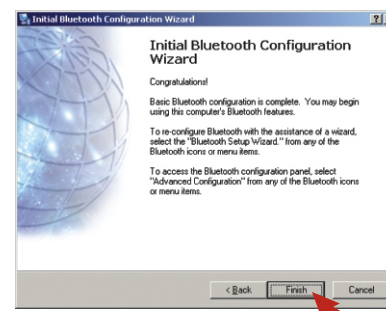


6. Click **Skip** to not create any connections at the moment.

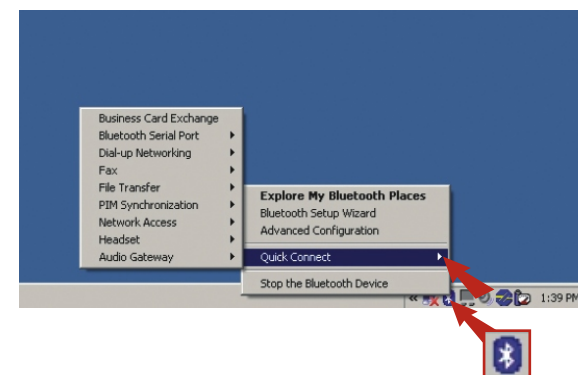


11

7. Click **Finish** to complete the initialization



8. Now the entire installation of the TBW-102UB High-Power Bluetooth USB Adapter is complete. You can right click on the **Bluetooth Icon** and select **Quick Connect** to start using any of the functions.

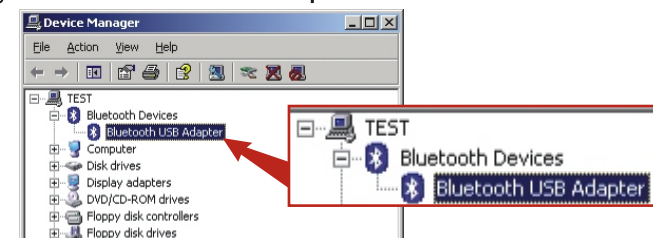


Note: For more details on each function, please go through the User's Guide on the Utility CD-ROM

12

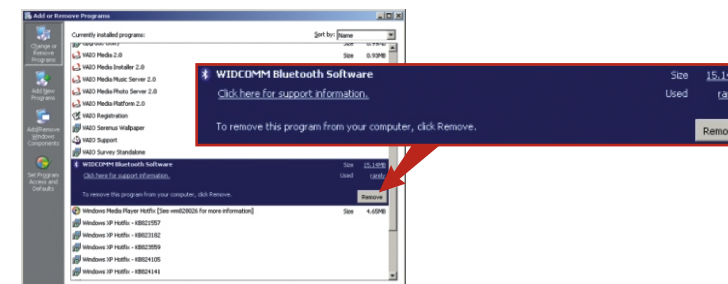
## Windows 2000/XP

1. Find **Start** Button located on Desktop.
2. Click **Start**, Click **Settings** and then click on **Control Panel**.
3. Double-Click the **System** Icon and the **System Properties** Box will appear.
4. Click on **Hardware** Tab and click on **Device Manager** button
5. Right click on **Bluetooth USB Adapter** and select **Uninstall**.



6. After the driver is uninstalled. Go back to **Control Panel** and Double-Click on **Add/Remove Program** icon, the Add/Remove Program window will appear.

7. Find **WIDCOMM Bluetooth Software**, select that and click on **Remove**.



8. You have successfully removed the Bluetooth USB Adapter software.

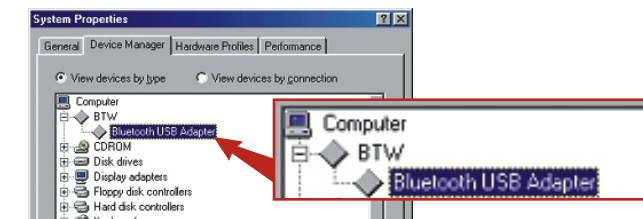
14

## 5. Remove Bluetooth USB Adapter

This section helps you remove the Bluetooth USB Adapter and the Utility Program from your computer. You can perform this task when the Bluetooth USB Adapter shows "not working properly" or when there is a updated Driver or Utility for the Bluetooth USB Adapter.

### Windows 98SE/ME

1. Find Start Button located on Desktop.
2. Click **Start**, Click **Settings** and then click on **Control Panel**.
3. Double-Click the **System** Icon and the **System Properties** Box will appear.
4. Go to **Device Manager** Tab, right click on **Bluetooth USB Adapter** and select **Uninstall**.



5. After the driver is uninstalled. Go back to **Control Panel** and Double-Click on **Add/Remove Program** Icon, the **Add/Remove Program** window will appear.
6. Find **WIDCOMM Bluetooth Software**, select that and click **Remove**.
7. Once the program is removed, Windows will display a message to restart the PC; click **Yes** to restart.
8. You have successfully uninstalled the Bluetooth Adapter software.

13

## 6. Troubleshooting

**Q1:** If the Device Status indicates the **Bluetooth USB Adapter is not working properly**, what do I do?

**A1:** Please follow the **Remove Bluetooth USB Adapter** procedures to remove the Bluetooth USB Adapter and reinstall it again.

**Q2:** How do I setup connection between Bluetooth devices?

**A2:** Please find the detail information from the User's Guide on the CD-ROM or additional information from TRENDnet's website.

**Q3:** How do I transfer files between my PC and my Cell Phone?

**A3:** You need to make sure your Cell Phone is Bluetooth enhanced and the software for the phone can allow you to transfer files. If yes, find the detail information from the User's Guide on the CD-ROM or additional information from TRENDnet's website.

Technical Support via Telephone: +1-310-891-1100  
Technical Support via Fax: +1-310-891-1111  
Technical Support via Internet: www.trendnet.com  
Technical Support via E-mail: support@trendware.com

**Technical Support Hours:**  
7:00AM ~ 6:00PM, Monday through Friday,  
Pacific Standard Time (except holidays)

15