



TEG-2224WS

28-port 10/100/1000Mbps Web-Based Gigabit Smart Switch

TRENDnet's TEG-2224WS 10/100/1000Mbps Web-Based Smart Gigabit Switch is the ideal Switch for network segmenting. It has 24 10/100Mbps, 2 10/100/1000Mbps Auto-Sensing and Auto-MDIX RJ45 ports for easy installation. And this Switch also has 2 additional mini GBIC ports that accept optional gigabit fiber modules for great flexibility. TEG-2224WS supports web browser configuration; Network Administrator can use web browser to configure port speed, port-based VLAN, QoS, Trunking and also monitor each port's status. TRENDnet's TEG-2224WS is powerful and easy-to-use in reducing unnecessary broadcast traffic and enhance network security



FEATURES

- 24 10/100Mbps Auto-negotiation MDIX Fast Ethernet Ports
- 2 10/100/1000Mbps Auto-negotiation, Auto-MDIX Gigabit Ports
- 2 mini GBIC ports for optional LC type gigabit fiber module
- Full/Half duplex mode for each port
- Store and Forward switching method
- Integrated address Look-Up Engine with 4K absolute MAC address table
- Supports 768K bytes RAM data buffering
- Extensive diagnostic LED's on the front panel
- IEEE 802.3x flow control for full/half-duplex mode
- Back pressure flow control for full/half-duplex mode
- Easy configuration the device from a Web browser
- Supports Port-Based VLAN (28 groups) and Port-Based IEEE 802.1p QoS (High/Normal)
- Supports Trunking (ports 25, 26) and Port Mirroring
- Support Port setting function allow user setting each port's speed, duplex mode, and flow control
- Standard 19" Rack-mount design
- 5-Years Warranty

BENEFITS

- **Easy Upgrade:**
Ethernet workgroups are able to upgrade to Fast Ethernet by changing adapters and a hub without changing switches.
- **Expandability:**
Expand the connection distance with optional GBIC fiber modules.
- **Flexibility:**
Easy management and configuration through Web browser
- **Performance:**
Provides non-blocking high performance with internal switch controller.
- **Cost-Effectiveness:**
The TEG-2224WS presents Gigabit Ethernet at an affordable rate.

TEG-2224WS

28-port 10/100/1000Mbps Web-Based Gigabit Smart Switch

SPECIFICATIONS

LAN Standards:

- IEEE 802.3 10Base-T, IEEE 802.3u 100Base-TX, IEEE 802.3ab 1000Base-T, IEEE 802.3z 1000Base-SX/LX (mini GBIC), IEEE 802.3x Full Duplex Flow Control

Network Media:

- Ethernet: UTP/STP Cat. 3, 4, 5
- Fast Ethernet: UTP/STP Cat. 5
- Gigabit : UTP/STP Cat. 5

Protocol:

- CSMA/CD

Topology:

- Star

LAN Port:

- 24 x 10/100Mbps Auto Negotiation, Auto-MDIX Fast Ethernet ports
- 2 x 10/100/1000Mbps Auto Negotiation, Auto MDIX Gigabit ports
- 2 x mini GBIC ports

Address Table:

- 4K entries per device

Data RAM buffer:

- 768 KB per device

Data Transfer Rate:

- Ethernet: 10/20Mbps – Half/Full-Duplex
- Fast Ethernet: 100/200Mbps – Half/Full Duplex
- Gigabit Ethernet: 1000/2000Mbps – Half/Full Duplex

Diagnostic LEDs:

- Per Unit: Power System
- Per Fast Ethernet Port: Link/ACT, 100M
- Per Gigabit Ethernet Port: Link/ACT, 1000M, 100M
- Per GBIC Gigabit Port: Link/ACT, 1000M

Power Consumption:

- 19 Watts. Max

Power Supply:

- 100-240V AC, 50/60Hz Internal Universal Power Supply

Dimensions:

- 440 x 200 x 44 mm (17.32" x 7.9" x 1.73")

Weight:

- 5.78 lb

Temperature:

- Operating: 0° ~ 40° C (32° ~ 104° F)
- Storage: -10° ~ 70° C (14° ~ 158° F)

Humidity:

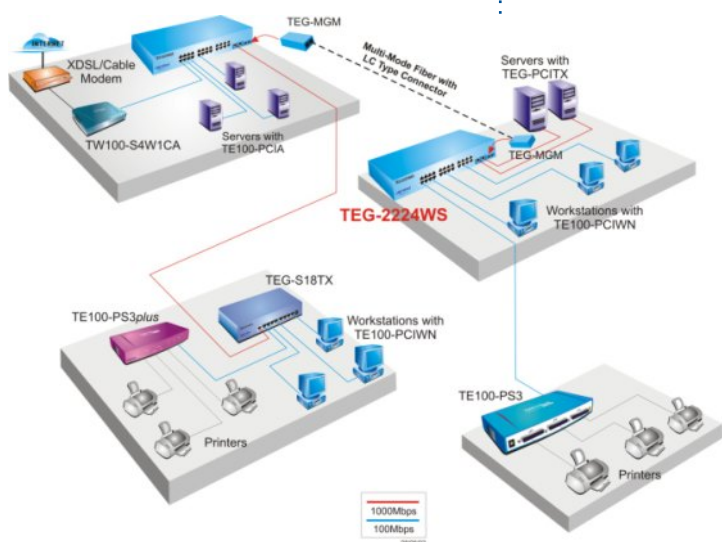
- 10% ~ 90% (no-condensing)

Certifications:

- FCC Class A, CE Mark A, VCCI-A



NETWORKING SOLUTIONS



To Order Please Call:
1-888-326-6061

PRODUCT INFORMATION

- ➔ **TEG-2224WS:** 28-Port 10/100/1000Mbps Web-Based Gigabit Smart Switch (Rack Mount)
- ➔ **TEG-MGM:** Multi-mode LC-type 1000Base-SX Module
- ➔ **TE100-S24WS:** 24-Port 10/100Mbps Smart Switch with Fiber Slot (Rack Mount)
- ➔ **TE100-S16V:** 16-Port 10/100Mbps Smart Switch with Fiber Slot (Rack Mount)
- ➔ **TE100-SFXM:** SC-type fiber slide-in module for TE100-S16V/S24WS

ORDERING INFORMATION

TRENDware International, Inc.

3135 Kashiwa Street
Torrance, CA. 90505. USA

Tel: 310-891-1100

Fax: 310-891-1111

Web: www.TRENDNET.com

Email: sales@trendware.com

