

## **TE100-S24** **24-Port 10/100Mbps NWay Fast Ethernet Switch (Rack Mount)**

TRENDnet's TE100-S24 is a high performance, auto-sensing 24-port NWay rack-mountable Fast Ethernet Switch. It is designed to eliminate unnecessary traffic and relieve congestion on critical network paths. With 10/100Mbps NWay technology, the TE100-S24 automatically negotiates between 10Base-T and 100Base-TX network speeds, as well as half and full duplex modes. The auto MDI-II/MDI-X detection on each port automatically detects and corrects for crossover connection and allows direct switch-to-switch or switch-to-hub connection for your networking needs.



### **FEATURES**

- ...→ 24 10/100Mbps NWay Auto MDI-II/MDI-X ports
- ...→ Integrate address Look-Up Engine, supports up to 8K absolute MAC address
- ...→ 2.5Mb internal RAM for frame buffering
- ...→ Full/half duplex transfer mode for each port
- ...→ Wire-speed filtering/forwarding rates
- ...→ IEEE 802.3x flow control for full-duplex mode
- ...→ Back pressure flow control for half-duplex mode
- ...→ Store-and-forward switching method
- ...→ Extensive front-panel diagnostic LEDs
- ...→ No cooling fan, for quite operation
- ...→ 5-Year Warranty

### **BENEFITS**

- ...→ **Performance:**  
Top performance at an affordable price.
- ...→ **Easy Upgrade:**  
Current Ethernet workgroups are able to upgrade to Fast Ethernet by changing adapters and hubs without changing switches.
- ...→ **Flexibility:**  
All ports automatically negotiate 10/100Mbps network speed, half/full-duplex mode, and MDI-II/MDI-X connector type.
- ...→ **Cost Effective:**  
Provide 10/100Mbps network connection at an affordable rate.



# TE100-S24

## 24-Port 10/100Mbps NWay Fast Ethernet Switch (Rack Mount)

### SPECIFICATIONS

#### Standards:

- IEEE 802.3 10Base-T, IEEE 802.3u 100Base-TX, ANSI/IEEE 802.3 NWay auto-negotiation

#### Connectors:

- 24 10/100Mbps shielded RJ45 Auto MDI-II/MDI-X ports

#### Network Cables:

- Cat. 3, 4, 5 UTP/STP for 10Base-T
- Cat. 5 UTP/STP for 100Base-TX

#### Protocols:

- CSMA/CD

#### Data Transfer Rate:

- Ethernet: 10Mbps (Half-Duplex), 20Mbps (Full-Duplex)
- Fast Ethernet: 100Mbps (Half-Duplex), 200Mbps (Full-Duplex)

#### Data RAM Buffers:

- 2.5MB per device

#### Filtering Address Table:

- 8K entries per device

#### Internal Power Adapter:

- 100~240 VAC, 10 watts max.

#### Diagnostic LEDs:

- Power, Link/Activity, 100Mbps

#### Weight:

- appr. 2.0 Kg (4.4 lb.)

#### Dimensions:

- 440 x 140 x 44 mm  
(17.3 x 5.51 x 1.73 inch) (W x H x D)

#### Temperature:

- Operating: 0° ~ 40°C (32° ~ 104°F),
- Storage: -10° ~ 70°C (14° ~ 158°F)

#### Humidity:

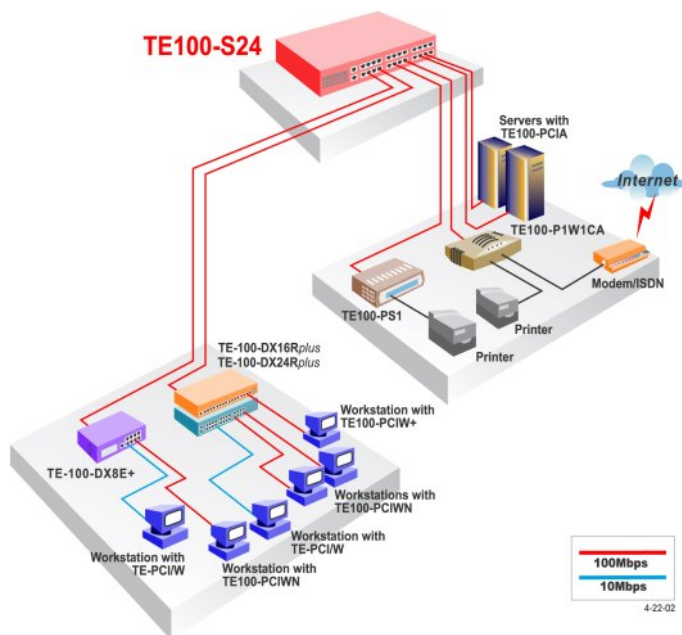
- Operating: 10% ~ 90% RH,
- Storage: 5% ~ 90% RH

#### Emission:

- FCC Class A, CE Mark A, VCCI-A



### NETWORKING SOLUTIONS



**To Order Please Call:**  
**1-888-326-6061**

### PRODUCT INFORMATION

- **TE100-S16:** 16-port 10/100Mbps NWay Switch (Rack Mount)
- **TE100-S24:** 24-port 10/100Mbps NWay Switch (Rack Mount)
- **TE100-S16V:** 16-port 10/100Mbps Smart Switch with Fiber Slot (Rack Mount)
- **TE100-S24V:** 24-port 10/100Mbps Smart Switch with Fiber Slot (Rack Mount)
- **TE100-SFXM:** SC-type fiber slide-in module for TE100-S16V/S24V

### ORDERING INFORMATION

#### TRENDware International, Inc.

3135 Kashiwa Street  
Torrance, CA. 90505. USA

Tel: 310-891-1100

Fax: 310-891-1111

Web: [www.TRENDNET.com](http://www.TRENDNET.com)

Email: [sales@trendware.com](mailto:sales@trendware.com)

