



TE100-S16R 16-Port 10/100Mbps NWay Fast Ethernet Switch

TRENDnet's TE100-S16R is a high performance, auto-sensing 16-port NWay rack-mountable Fast Ethernet Switch. It is designed to eliminate unnecessary traffic and relieve congestion on critical network paths. With 10/100Mbps NWay technology, the TE100-S16R automatically negotiates between 10Base-T and 100Base-TX network speeds, as well as half and full duplex modes Supporting "Port Trunking" and Quality of Service (QoS), TRENDnet's TE100-S16R is the perfect solution for network backbone and multimedia applications.

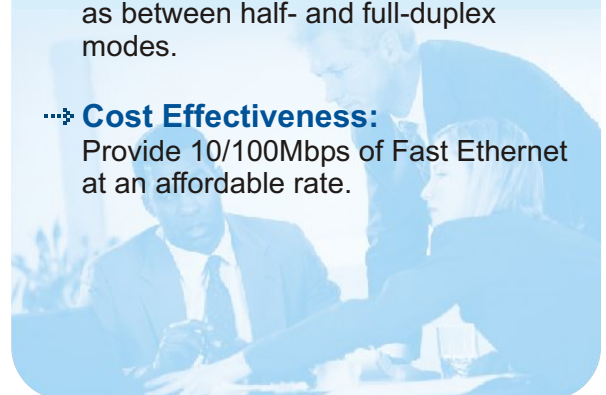


FEATURES

- 16 10/100Mbps NWay half/full duplex MDI-X ports
- One Uplink port (shared) with port 8
- Integrate address Look-Up Engine, supports up to 16K absolute MAC address
- Support three QoS levels; checked via IP Header, 802.1Q VLAN Tag, and/or selected per-port basis
- Supports trunking function; max. of 8 trunk ports are available with max. 1.6Gbps trunking bandwidth
- 512KB internal RAM for frame buffering
- Wire-speed filtering/forwarding rates
- IEEE 802.3x flow control for full-duplex mode; Back pressure flow control for half-duplex mode
- Store-and-forward switching method
- Extensive front-panel diagnostic LEDs
- 5 Year Warranty

BENEFITS

- **Performance:**
Port Trunking function creates up to 1.6Gb fat pipe between two Switches. QoS Support improves network multimedia applications' performance.
- **Expandability:**
Uplink two or more Switches together with uplink port and regular CAT5 UTP RJ45 cable to further expand the number of switched ports.
- **Flexibility:**
The NWay ports automatically negotiate between 10Base-T and 100Base-TX network speeds as well as between half- and full-duplex modes.
- **Cost Effectiveness:**
Provide 10/100Mbps of Fast Ethernet at an affordable rate.



TE100-S16R

16-Port 10/100Mbps NWay Fast Ethernet Switch

SPECIFICATIONS

Standards:

- IEEE 802.3 10Base-T and IEEE 802.3u 100Base-TX/100Base-FX ANSI/IEEE 802.3 NWay auto-negotiation

Connectors:

- 16 10/100Mbps shielded RJ45 MDI-X ports
- 1 MDI-II Uplink port shared with port 8

Network Cables:

- CAT 3, 4, 5 UTP/STP for 10Base-T
- CAT 5 UTP/STP for 100Base-TX

Protocols:

- CSMA/CD

Data Transfer Rate:

- Ethernet: 10Mbps (Half-Duplex), 20Mbps (Full-Duplex)
- Fast Ethernet: 100Mbps (Half-Duplex), 200Mbps (Full-Duplex)

Data RAM Buffers:

- 512Kbytes per device

Filtering Address Table:

- 16K entries per device

Internal Power Adapter:

- 100~240 VAC, Universal Power Supply

Diagnostic LEDs:

- Power, FX, Link/Act, FDX/COL

Weight:

- 2.11 Kg (4.66 lb.)

Dimensions:

- 440 x 140 x 44 mm
(17.3 x 5.51 x 1.73 inch) (W x H x D)

Temperature:

- Operating: -10° ~ 50°C (14° ~ 122°F)
- Storage: -10° ~ 70°C (14° ~ 158°F)

Humidity:

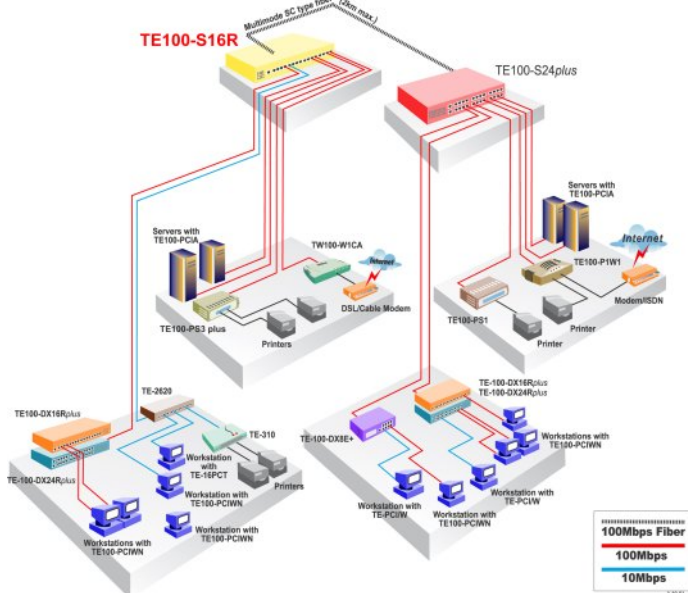
- Operating: 10% ~ 90% RH
- Storage: 5% ~ 90% RH

Emission:

- FCC Class A, CE Mark A, VCCI-A



NETWORKING SOLUTIONS



PRODUCT INFORMATION

➔ **TE100-S16R**
16-Port 10/100Mbps NWay
Fast Ethernet Switch

ORDERING INFORMATION

TRENDware International, Inc.
3135 Kashiwa Street
Torrance, CA. 90505. USA
Tel: 310-891-1100
Fax: 310-891-1111
Web: www.TRENDNET.com
Email: sales@trendware.com



To Order Please Call:
1-888-326-6061