



TE100-S16E

16-port 10/100Mbps NWay Fast Ethernet Compact Switch

TRENDnet's TE100-S16E high performance auto-sensing NWay switch is designed specifically to boost your network performance by eliminating network congestions and unnecessary network traffics. Each of the 16 ports on the Switch, not only provides dedicated bandwidth, but also negotiates between 10Mbps and 100Mbps network speeds. With it's compact size, the TE100-S16E can be installed anywhere in the network and is the ideal solution for today's bandwidth-hungry network.



FEATURES

- ...→ Compliant with IEEE 802.3 10Base-T, IEEE 802.3u 100Base-TX standard
- ...→ 16 UTP/STP RJ-45 10/100Mbps NWay auto-sensing ports
- ...→ Store and forward packet switching
- ...→ Half- and full-duplex operation for each port
- ...→ 802.3 flow control for full duplex connection and back pressure flow control for half-duplex connection.
- ...→ Auto-learning of network configuration
- ...→ Built-in 8K entries per device for Filtering Address Table
- ...→ 512KB per device RAM buffer.
- ...→ MDI-II uplink port (shared with port 1) for easy expansion
- ...→ Broadcast Storm Protection
- ...→ 5 Year Warranty

BENEFITS

- ...→ **Easy Upgrade:**
Ethernet workgroups are able to upgrade to Fast Ethernet by changing adapters and hubs without changing switches.
- ...→ **Expandability:**
Simple expansion can be done by unlinking two or more switches with all ports supporting 200Mbps in full-duplex mode.
- ...→ **Flexibility:**
The NWay ports automatically negotiate between 10Base-T and 100Base-TX network speeds as well as between half- and full-duplex modes.
- ...→ **Performance:**
Dedicated bandwidth on each port providing top performance at an affordable price.

TE100-S16E

16-port 10/100Mbps NWay Fast Ethernet Compact Switch

SPECIFICATIONS

Standards:

- IEEE 802.3 10Base-T, IEEE 802.3u 100Base-TX, ANSI / IEEE 802.3 NWay auto-negotiation

Data Transfer Rate:

- 10/100Mbps (20/200Mbps in full-duplex mode)

Protocol:

- CSMA/CD

Connectors:

- 16 UTP/STP RJ-45

Network Cables:

- 10BASE T: 2-pair UTP Cat. 3,4,5; EIA/TIA- 568 100-ohm STP
- 100BASE-TX: 2-pair UTP Cat. 5; EIA/TIA-568 100-ohm STP

Diagnostic LED's:

- Power, 10 Link/Act, 100Link/Act, FDX, COL

Power:

- External AC Adapter DC 5V, 5A, 25 Watts Max.

Dimensions:

- 184x 124 x 44 mm
7.2" x 4.9" x 1.7" (L x W x H)

Weight:

- 848g (1.87lbs)

Temperature:

- Operating.: -10° to 50° C (14° to 122° F)
- Storage: -10° to 70° C (14° to 158° F)

Humidity:

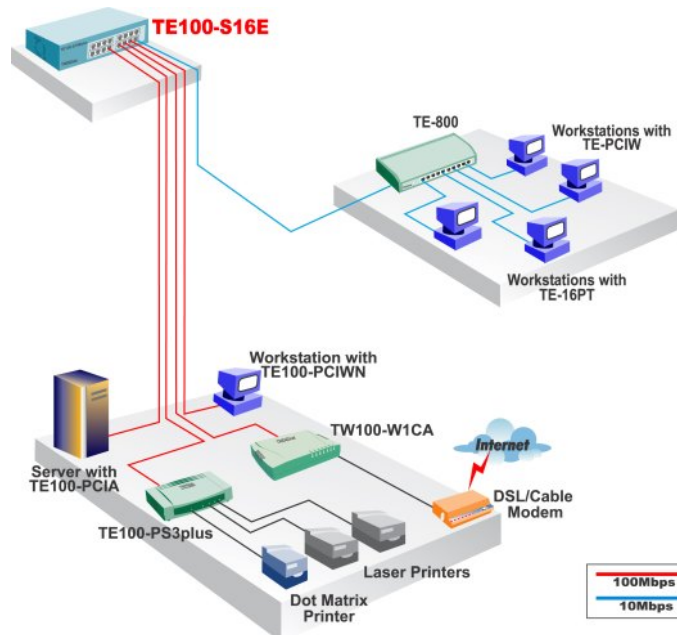
- Operating: 10 to 90% (non-condensing)
- Storage: 5 to 90% (non-condensing)

Certifications:

- FCC, CE, VCCI



NETWORKING SOLUTIONS



To Order Please Call:
1-888-326-6061

PRODUCT INFORMATION

- ➔ **TE100-S16E:** 16-port 10/100Mbps NWay Fast Ethernet Compact Switch
- ➔ **TE100-S16:** 16-port 10/100Mbps NWay Switch
- ➔ **TE100-S2424:** 24-port 10/100Mbps NWay Switch (Rack Mount)
- ➔ **TE100-SFXM:** SC-Type Fiber Slide-in Module for TE100-S1616/S2424/S16
- ➔ **TE100-S1616V:** 16-port 10/100Mbps NWay VLAN Switch
- ➔ **TE100-S2424V:** 24-port 10/100Mbps NWay VLAN Switch
- ➔ **TE100-SVFXM:** SC-Type Fiber Slide-in Module for TE100-S1616V/S2424V

ORDERING INFORMATION

TRENDware International, Inc.

3135 Kashiwa Street
Torrance, CA. 90505. USA
Tel: 310-891-1100
Fax: 310-891-1111
Web: www.TRENDNET.com
Email: sales@trendware.com

