



## TE100-S1212 12-Port 10/100Mbps N-way Auto-sensing Switching Hub

The TE100-S1212 is a Fast Ethernet switch that enhances workgroup performance while providing a high level of flexibility. With 10/100Mbps of power, the TE100-S1212 allows users to simply plug any port to either 10Mbps or 100Mbps network to multiply and boost response time which helps meet heavy workload demands. The switch's N-way ports automatically negotiate between 10Mbps and 100Mbps network speeds, as well as with half and full duplex capabilities. Any port can act as an uplink to Fast Ethernet or downlink to Ethernet.



### FEATURES

- Compliant with IEEE 802.3 10Base-T, IEEE 802.3u 100Base-TX/FX standard
- Supports 12 RJ-45 10/100Mbps auto-sensing ports
- 10/100Mbps auto-negotiation and auto-sensing on all ports
- Full/half duplex operation for each port
- 1.3 Gbps Switching Fabric. Provides high-speed switching scheme
- Store-and-forward packet switching
- Built-in address self-learning mechanism
- Built-in 120 KB packet buffer per port
- Built-in 4 KB filtering address table per port
- 14,880 pps per port forwarding rate for 10Base-T
- 148,800 pps per port forwarding rate for 100Base-TX
- Optional DMA Port for 100Base-FX SC type module (share with port 12)
- Console Port for easy diagnostic
- Complete Runt & CRC Filtering
- 5 Year Warranty

### BENEFITS

#### → **Easy Upgrade:**

Ethernet workgroups are able to upgrade to Fast Ethernet by changing adapters and hubs without changing switches.

#### → **Expandability:**

Simple expansion can be done by cascading two or more switches. As all ports support 200Mbps full duplex.

#### → **Flexibility:**

The switch's N-way ports automatically negotiate between 10Base-T and 100Base-TX network speeds as well as between full and half duplex modes.

#### → **Cost Effective:**

Provides 10/100Mbps of Fast Ethernet at an affordable rate.

#### → **Performance:**

Increase Fast Ethernet Bandwidth by 12 times.

# TE100-S1212

## 12-Port 10/100Mbps N-way Auto-sensing Switching Hub

### SPECIFICATIONS

**Protocol:**

- CSMA/CD

**Speed:**

- 10Mbps (half duplex) / 20Mbps (full duplex) for 10Base-T
- 100Mbps (half duplex) / 200Mbps (full duplex) for 100Base-TX

**Cabling:**

- CAT 3, 4, 5 UTP/STP for 10Base-T
- CAT 5 UTP/STP for 100Base-TX

**LED's:**

- Power, Link/ACT, FDX/COL, 100M

**Power:**

- Internal Power Supply (100-240V, 50/60Hz)  
40W, 5V/8A

**Dimensions:**

- 442 x 258 x 44 mm / 17.4" x 10.2" x 1.7" (L x W x H)

**Weight:**

- 3.73 kg / 8.2 lb.

**Temperature:**

- Operating: 0° to 50° C
- Storage: -20° C to 80° C

**Humidity:**

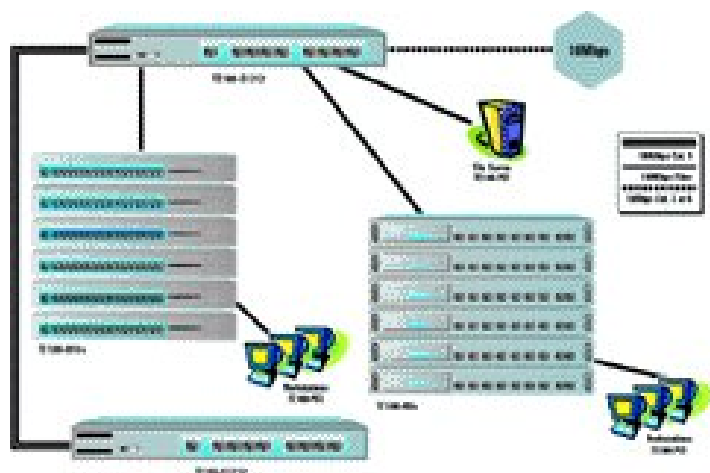
- 10% - 90% (non-condensing)

**Certification:**

- FCC Class A, UL, CSA, CE



### NETWORKING SOLUTIONS



**To Order Please Call:**  
**1-888-326-6061**

### PRODUCT INFORMATION

- **TE100-S28:** 10-port 10/100Mbps Switching Hub
- **TE100-S22:** 2-port ( 2 x 10/100Mbps) N-way Switching Hub
- **TE100-S88:** 8-port 10/100Mbps N-way Switching Hub
- **TE100-S1212:** 12-port (12 x 10/100Mbps) N-way Switching Hub

### ORDERING INFORMATION

**TRENDware International, Inc.**  
3135 Kashiwa Street  
Torrance, CA. 90505. USA  
Tel: 310-891-1100  
Fax: 310-891-1111  
Web: [www.TRENDNET.com](http://www.TRENDNET.com)  
Email: [sales@trendware.com](mailto:sales@trendware.com)

