

TE100-DX16Rplus **16-Port Stackable Dual-Speed Hub with built-in Switch**

The TE100-DX16Rplus is a Class II dual speed 10/100Mbps stackable hub that provides a new level of flexibility and easy migration between bandwidths. Each port supports auto-sensing between Ethernet and Fast Ethernet devices. Once port speed is negotiated, the hub stack creates independent segments for the 10Mbps and 100Mbps ports. It is stackable, capable of cascading up to four hubs per stack creating up to 128 connections. The network can be further expanded by uplinking two hub stacks together by using CAT 5 UTP/STP cable. With switched uplink port, it is a true 10/100Mbps hub. No external switches are needed for 10/100Mbps interoperability. Optional slide-in fiber module provides extended cable connection.



FEATURES

- Compatible with IEEE 802.3 10Base-T Ethernet, IEEE 802.3u Fast Ethernet Class II standards
- 16 10/100Mbps auto-negotiation ports
- Plug and Play installation with automatic port configuration
- Built-in switch function intercommunicates between 10Mbps and 100Mbps segments
- One switch port (MDI-II) supports 100Mbps uplink distance up to 100 meters
- EIA-19 rack mountable
- Stackable up to four units to reach 64 ports per stack and expandable up to 2 stacks (126 ports)
- Optional slide-in module for 100Base-FX Multi-mode SC type fiber connection (half-duplex)
- Internal universal power supply
- 5 Year Warranty

OPTIONS

- SC-type Fiber Slide-in Module for TE100-DX16Rplus, TE100-DX24Rplus, and TE100-DX32Rplus (TE100-SFXM)

BENEFITS

- **Performance:**
Full 100Mbps connectivity significantly boosts network performance.
- **Expandability:**
Uplink to another 100Mbps hubs up to 100 meters away by using the switched uplink port and UTP/STP CAT 5 cable. They are stackable up to 128 ports per stack.
- **Scalability:**
All 10 and 100Mbps users can exist on one hub. The 16-port model can be stacked with 24-port and/or 32-port model. Optional fiber module connects as far as 2 km.
- **Cost Effectiveness:**
Provides 10Mbps, 100Mbps hub and 10/100 switching functionality in one unit.
- **Easy Upgrade:**
Ethernet workgroups can be upgraded to Fast Ethernet without changing hubs.

TE100-DX16Rplus

16-Port Stackable Dual-Speed Hub with built-in Switch

SPECIFICATIONS

Standards:

- IEEE 802.3 10Base-T Ethernet Repeater, IEEE 802.3u 100Base-TX Class II Repeater, IEEE 802.3 μ 100Base-FX

Protocol:

- CSMA/CD

Data Transfer Rate:

- 10/100Mbps

Topology:

- Star

Network Media:

- UTP CAT 5 (100 m), EIA/TIA-568 100-ohm screened twisted pair (STP) (100 m), 62.5/125 micron multi-mode fiber-optics (2 km)

Power Consumption:

- 40 Watts max. (100 - 240 V, 50/60Hz AC internal power supply)

Diagnostic LEDs:

- System: Power, FX Link/Rx, 10M Collision, 100M Collision, Link/Rx, 100M

Dimensions:

- 440 x 200 x 44 mm
(17.3 x 7.9 x 1.7 inches)

Weight:

- 2.35 kg (5.17 lbs.)

Temperature:

- Operating: -10° to 40° C (14° to 104° F)
- Storage: -20 to 70° C (-4° to 158° F)

Humidity:

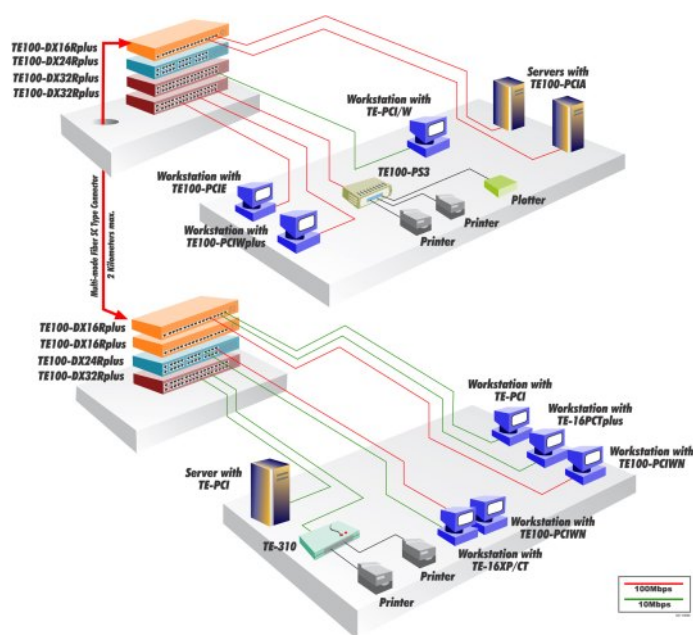
- Operating: 10 % to 90 % non-condensing
- Storage: 5 % to 90 % non-condensing

Certifications:

- FCC, UL, CE



NETWORKING SOLUTIONS



To Order Please Call:
1-888-326-6061

PRODUCT INFORMATION

- **TE100-DX16Rplus:** 16-port 10/100Mbps Stackable Dual Speed Hub with Switched Uplink Port
- **TE100-DX24Rplus:** 24-port 10/100Mbps Stackable Dual Speed Hub with Switched Uplink Port
- **TE100-DX32Rplus:** 32-port 10/100Mbps Stackable Dual Speed Hub with Switched Uplink Port
- **TE100-SFXM:** SC-type Fiber Slide-in Module for TE100-DX16R+/DX24R+/DX32R+

ORDERING INFORMATION

TRENDware International, Inc.

3135 Kashiwa Street
Torrance, CA. 90505. USA

Tel: 310-891-1100

Fax: 310-891-1111

Web: www.trendnet.com

Email: sales@trendware.com

TRENDnet
TRENDware, USA