

TRENDnet[®]

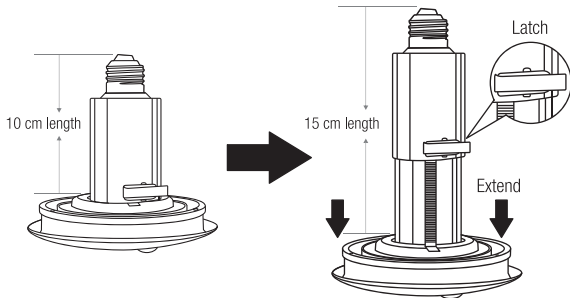


Indoor HD WiFi Light Bulb Surveillance Camera Quick Installation Guide

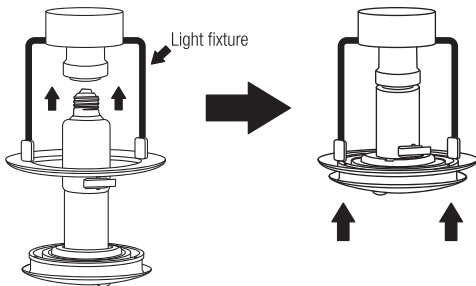
TWC-L10

1. Camera Installation

1. Release the latch to fully extend the TWC-L10.



2. Screw in the TWC-L10 into the Light fixture.
3. Push in the TWC-L10 to compress and lock it into place.



App Download

Search for “ReadyView” on Google Play or App Store and download it to your mobile device.



Or scan the below QR Code to download the app:



Android



iOS

To view the installation video, please visit www.trendnet.com/TWC-L10-install.

Compatible Versions

iPhone: iOS 9 or later versions.

Android Phone: Android 4.4 or later versions.

Adding TWC-L10 on Android : Go to page 3

Adding TWC-L10 on iOS : Go to page 7

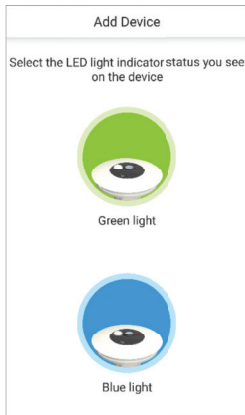
Adding another mobile device to TWC-L10 : Go to page 12

App Device on Android

1. To add the camera, open the ReadyView app then tap ⊕ button.



2. Tap to select the appropriate LED Indicator status you see on the camera. For initial setup the default LED color is green.



LED Indicator Color – Wi-Fi Status:

Green = Adding a new camera,
camera not connected to network

Blue = Adding an installed camera to
new mobile device. Camera connected
to network (go to page 12)



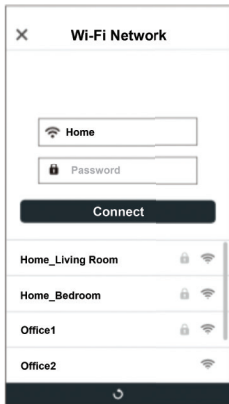
3. To add the camera enter the password, then tap “Next” to proceed.



Note:

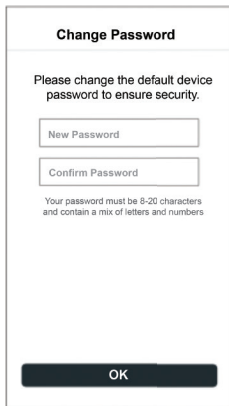
The default password is **888888**. If you forget your password, press the reset button on the device to restore factory settings.

4. A list of nearby Wi-Fi networks will appear. Tap your Wi-Fi network from the list then enter your Wi-Fi password.

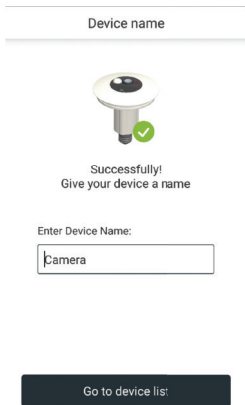


5. The TWC-L10 will prompt you to change the password from its default.

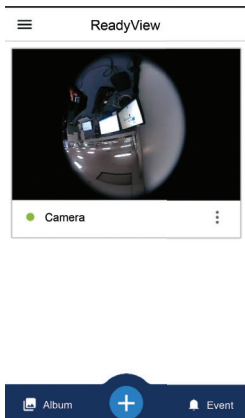
Note: It is required that you change the password from its default value. Use 8 to 20 letters from a-z, and numbers 0-9, no special characters.



6. Name your device then tap **Go to device** to return to the dashboard.



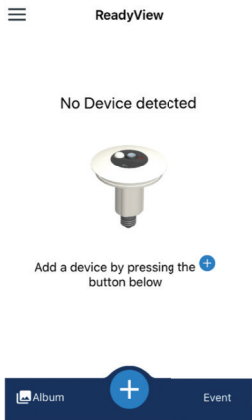
7. The dashboard screen will appear after setup has been completed.



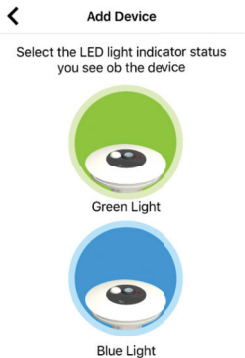
Note: Go to Dashboard section for app features on page 14.

Add Device on iOS

1. To add the device, open the **ReadyView** app then tap ⊕ button.



2. Tap to select the appropriate LED Indicator status you see on the camera. For initial setup the default LED color is green.



LED Indicator Color – Wi-Fi Status:

Green = Adding a new camera,
camera not connected to network

Blue = Adding an installed camera to
new mobile device. Camera connected
to network (go to page 12)



Remove the protective cover

3. If your device is not connected to your Wi-Fi network, go to iPhone Settings then go to Wi-Fi and select "TWCL10-xxxxxx" to connect your iPhone to the camera.

Note: Device Wi-Fi:
SSID: TWCL10 - *****
Password: 12345678



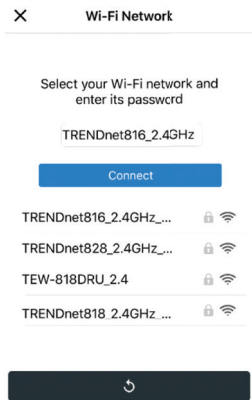
5. To add the camera enter the password, then tap “Next” to proceed.



Note:

The default password is 888888. If you forget your password, press the reset button on the device to restore factory settings.

6. A list of nearby Wi-Fi networks will appear. Tap your Wi-Fi network from the list then enter your Wi-Fi password.



7. The TWC-L10 will prompt you to change the password from its default.

Note: It is required that you change the password from its default value. Use 8 to 20 letters from a-z, and numbers 0-9, no special characters.

Change Password

For security reasons, please enter a new password and re-enter to confirm

New Password


Confirm Password

Your password must be 8-20 characters and contain a mix of letters and numbers.

OK

8. Name your device then tap **Go to device list** to return to the dashboard.

Device name

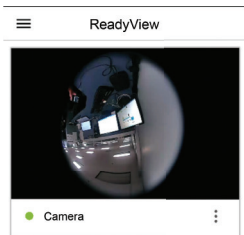


Successfully!
Give your device a name

Enter Device Name:

Go to device list

9. The dashboard screen will appear after setup has been completed.



Note: Go to Dashboard section for app features.

2. Adding mobile device to TWC-L10

Option 1: Scan QR Code

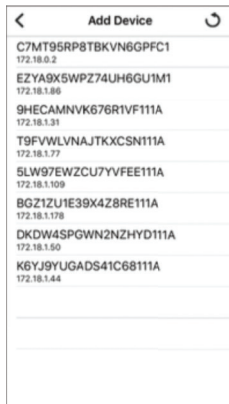
1. You may be asked to scan the included QR Code, which is attached on a card that came with the camera.



Option 2: LAN Search

1. If QR Code doesn't work, click **Can't use QR Code** at the bottom of the screen. The app will scan for available cameras on your network. Tap the UID that is associated with your camera.

Note: Locate the cameras UID on the included card.



2. To add the camera, enter the password, then was created during initial set up. Click “Next” to proceed to the next step.



← Add Device



Device UID:
TTMJYY6FM1PMD73111A

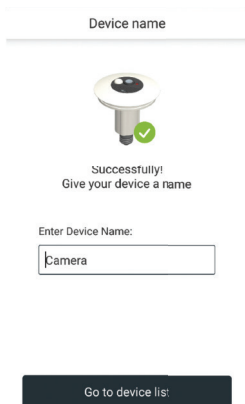
Enter Device Password:

NEXT


Note:

The default password is 888888. If you forget your password, press the reset button on the device to restore it to factory default settings.

3. Name your device then tap **Go to device list** to return to the dashboard.



Device name

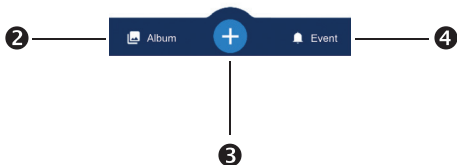
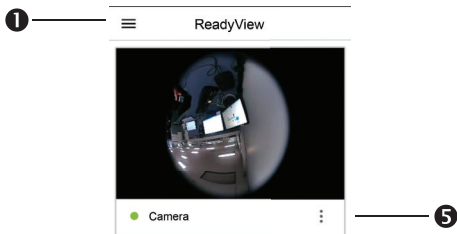


Successfully!
Give your device a name

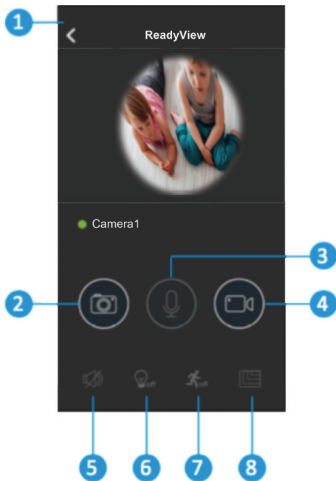
Enter Device Name:

Go to device list:

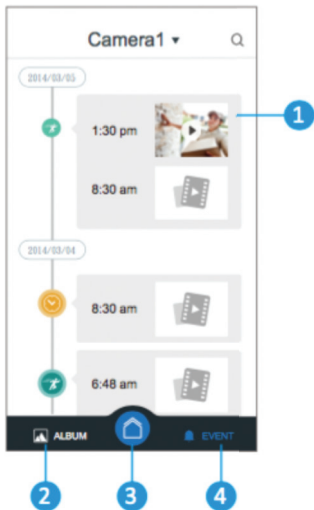
3. Live View



1. Side Menu
2. Album
3. Add Device
4. Event List
5. Settings



1. Go Back
2. Snapshot
3. Microphone
4. Record Video
5. Mute Speaker
6. Light Switch
7. PIR Sensor
8. Video Quality



1. Event Clip
2. Album
3. Return to Dashboard
4. Event List

Certifications

This device complies with Part 15 of the FCC Rules. Operation is subject to the following two conditions:

- (1) This device may not cause harmful interference.
- (2) This device must accept any interference received, including interference that may cause undesired operation.

This device complies with Industry Canada licence-exempt RSS standard(s). Operation is subject to the following two conditions: (1) this device may not cause interference, and (2) this device must accept any interference, including interference that may cause undesired operation of the device.

Le présent appareil est conforme aux CNR d'Industrie Canada applicables aux appareils radio exempts de licence.

L'exploitation est autorisée aux deux conditions suivantes:

- (1) l'appareil ne doit pas produire de brouillage, et
- (2) l'utilisateur de l'appareil doit accepter tout brouillage radioélectrique subi, même si le brouillage est susceptible d'en compromettre le fonctionnement.

IC RF Radiation Exposure Statement

This device complies with the ICSED RSS-102 RF exposure limit set forth for an uncontrolled environment and are safe for intended operation as described in this manual.

Déclaration d'exposition aux radiations Cet appareil est conforme aux limites d'exposition aux rayonnements Canada établies au pour un environnement non contrôlé et ne présente pas de risque dans le cadre d'une utilisation conforme à celle décrite dans ce manuel.



Waste electrical and electronic products must not be disposed of with household waste. Please recycle where facilities exist. Check with your Local Authority or Retailer for recycling advice.

Applies to PoE Products Only: This product is to be connected only to PoE networks without routing to the outside plant.

Note

The Manufacturer is not responsible for any radio or TV interference caused by unauthorized modifications to this equipment. Such modifications could void the user's authority to operate the equipment.

Advertencia

En todos nuestros equipos se mencionan claramente las características del adaptador de alimentación necesario para su funcionamiento. El uso de un adaptador distinto al mencionado puede producir daños físicos y/o daños al equipo conectado. El adaptador de alimentación debe operar con voltaje y frecuencia de la energía eléctrica domiciliar existente en el país o zona de instalación.

Technical Support

If you have any questions regarding the product installation, please contact our Technical Support. Toll free US/Canada: **1-866-845-3673** Regional phone numbers available at www.trendnet.com/support

Product Warranty Registration

Please take a moment to register your product online. Go to TRENDnet's website: www.trendnet.com/register

TRENDnet Inc.

220675 Manhattan Place
Torrance, CA 90501
USA