

# TW100-S4W1CA

**DSL/Cable Broadband Router with 4-Port Switch  
Quick Installation Guide**

**Guide d'installation rapide pour le  
Routeur Broadband DSL/Câble avec Switch de 4 ports**

**Schnell Anleitung  
DSL/Kabel Breitband-Router mit 4-Port Switch**

**Guía de Instalación Rápida para el  
Enrutador de Banda Ancha DSL/Cable con Switch de 4 Puertos**

**Version 05.17.04**



**TRENDnet**  
TRENDware, USA  
**What's Next in Networking**

# Table of Contents

|   |    |
|---|----|
| English .....                                     | 1  |
| 1. Prepare for Installation .....                 | 1  |
| 2. Install Hardware .....                         | 3  |
| 3. Configure the computer's TCP/IP Settings ..... | 4  |
| 4. Configure the Router .....                     | 10 |
| Troubleshooting.....                              | 18 |

# English QIG

## 1. Prepare for Installation

Thank you for purchasing the TW100-S4W1CA. This router will allow you to share your Internet connection with multiple users while its firewall protects your network from hackers.

This guide will help you set up and configure your router. Following the installation instructions should be quick and easy. If you run into problems, please refer to the Troubleshooting section or the more detailed installation procedures on the User's Guide. If you need further technical support, please visit [www.trendnet.com](http://www.trendnet.com) or call by phone.

### Verify Package Contents

Please make sure you have everything in the box:



### Verify Equipment

Before installing the router you should have:

1. A Cable/DSL Modem with an Ethernet Port Set-up
2. A working Internet account
3. A Web Browser such as Internet Explorer (5.0 or higher) or Netscape Navigator (4.7 or higher)
4. An RJ-45 Network Cable for each computer connected to the router.
5. TCP/IP protocol installed on computer(s)
6. Computers with "Client for Microsoft Networks" installed

## **Collect Internet Service Provider (ISP) Information**

During the installation of your router the Set-Up Wizard will ask you for specific Internet Service Provider ISP information you should have been provided from your ISP to set up your Cable or DSL connection. The information is different based on your type of Internet Connection. Please verify your Internet Connection type and ensure you have the following information:

### **Dynamic IP Cable Connection**

Nothing required. IP address will automatically be assigned by the ISP.

### **Static or Fixed IP Cable Connection**

Internet IP Address:\_\_\_\_.\_\_\_\_.\_\_\_\_.\_\_\_\_ (eg. 215.24.24.129)

Subnet Mask: \_\_\_\_ . \_\_\_\_ . \_\_\_\_ . \_\_\_\_

Gateway IP Address:\_\_\_\_.\_\_\_\_.\_\_\_\_.\_\_\_\_

Primary DNS:\_\_\_\_.\_\_\_\_.\_\_\_\_.\_\_\_\_

Secondary DNS:\_\_\_\_.\_\_\_\_.\_\_\_\_.\_\_\_\_

### **PPPoE DSL Connection**

Login Name:\_\_\_\_\_

Password:\_\_\_\_\_

### **PPTP DSL Connection**

Login Name:\_\_\_\_\_

Password:\_\_\_\_\_

## 2. Install Hardware

1. Turn off your Cable/DSL Modem, Router, and PC.
2. Connect one RJ-45 network cable from the Modem's Ethernet port to the Router's WAN port.
3. Connect a different RJ-45 network cable from one of the Router's LAN ports to your computer's network port.
4. Turn on your Cable/DSL modem.
5. Turn on your router.
6. Turn on your computer.



### Verify Hardware Installation

Verify that the following router front panel lights are on: Power, WAN, and one LAN port. (for each computer connected to your router)

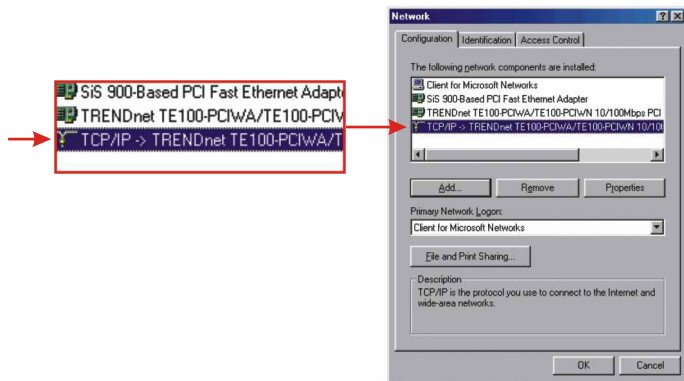


### 3. Configure the computer's TCP/IP Settings

This next section will ensure that your computer can communicate with your router. To do this, you will need to configure the TCP/IP settings in your Operating System (OS). Configuration instructions for Windows OS-based computers are shown below. For computers running other operating systems, see your system documentation for configuration instructions.

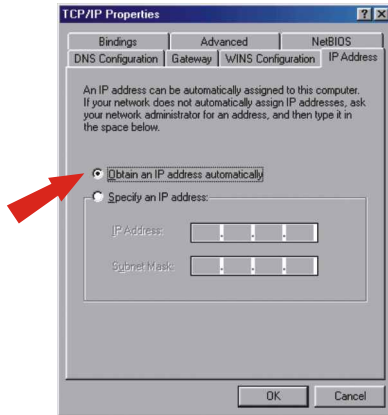
#### Windows 95/98/98SE/ME

1. Find **Start** Button located on Desktop.
2. Click **Start**; Click **Settings** and then click on **Control Panel**.
3. Double-Click the Network Icon and the Network Properties box will appear.
4. Under the General Configuration Tab, locate and select **TCP/IP** with the corresponding network card (such as TRENDnet TE100-PCIWN 10/100Mbps Network Adapter), and then click on the Properties button and the TCP/IP window will appear.

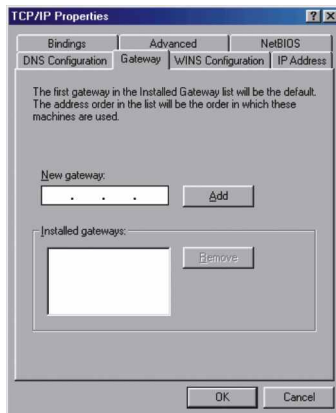


**NOTE:** If you have a Static IP address connection, write down the IP addresses from the following sections before you change the settings.

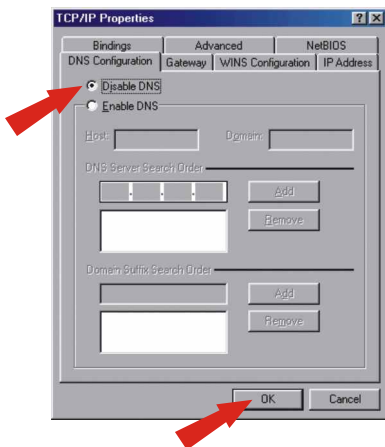
5. Under the IP Address Tab, select **Obtain an IP address automatically**.



6. Now go to the Gateway tab and make sure no Gateways are listed in the Installed Gateway's section. If there is Gateway installed, click **Remove** to remove it.



7. Go to the DNS Configuration tab and click **Disable DNS**. Then click **OK**.



8. Click **OK** on the TCP/IP Properties box.

9. Click **OK** on the Network Box.

10. At this point, the installation may require files from your Windows CD-ROM. If this happens, insert Windows 98 CD-ROM into your CD-ROM drive and select CD-ROM drive to load the files.

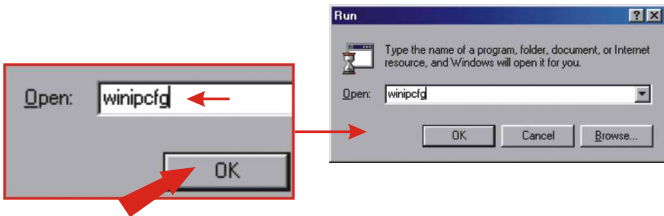
11. After the files load, the **System Settings Change** message appears, click **Yes** to reboot your system. Your computer will now load your new TCP/IP settings.



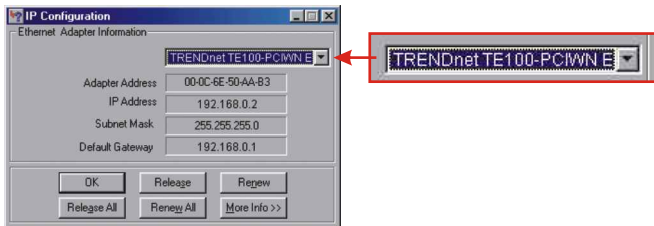
**NOTE:** If the message does not appear, you will need to manually restart your computer.



12. After your system reboots, click **Start**; click on **Run**. Then type **wiipcfg** in the field and click **OK**.



13. The IP configuration box will appear. Choose your Network adapter from the dropdown box (such as TRENDnet TE100-PCIWN 10/100Mbps network adapter) and the current IP address information of your computer will show in the box, including the following: IP Address, Subnet Mask and Default Gateway.



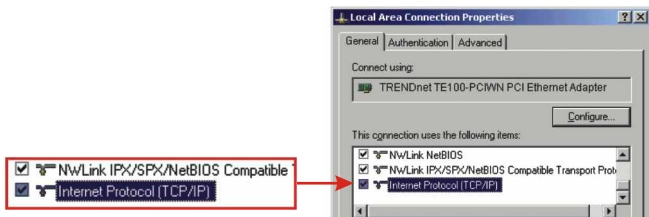
14. If your IP Address shows the following information, your computer is now successfully connected to the router:

IP Address: 192.168.1.x  
Subnet Mask: 255.255.255.0  
Default Gateway: 192.168.1.1

**NOTE:** If the information shown is incorrect, please reboot and retry the steps above.

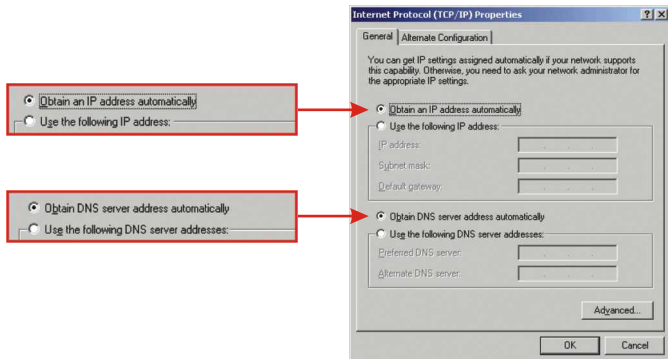
## Windows 2000/XP

1. Click **Start**; click **Settings**, and click on **Control Panel**.
2. Double-click the **Network Connections** Icon.
3. Right-click on the **Local Area Connection** Icon, and then click on **Properties**. The Local Area Connection Properties box will appear.
4. Under the "General Configuration" Tab, locate and select **TCP/IP** and then click **Properties**. The Internet Protocol (TCP/IP) Properties box will appear.

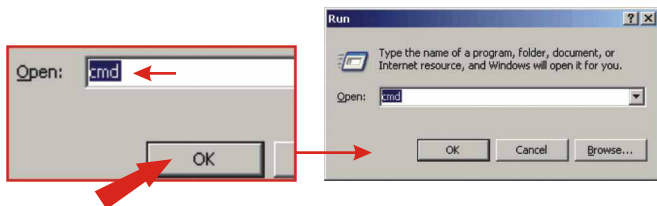


**NOTE:** If you have a Static IP address connection, write down the IP addresses from the following sections before you remove them from the settings.

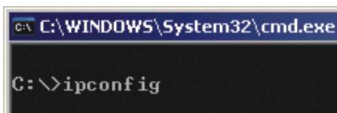
5. Click on **Obtain an IP address automatically** and **Obtain DNS Server address automatically**.



6. Click **OK**.
7. Click **Close** on the Local Area Connection Properties box.
8. Click on **Start**; click on **Run**. Then type **cmd** and click **OK**.

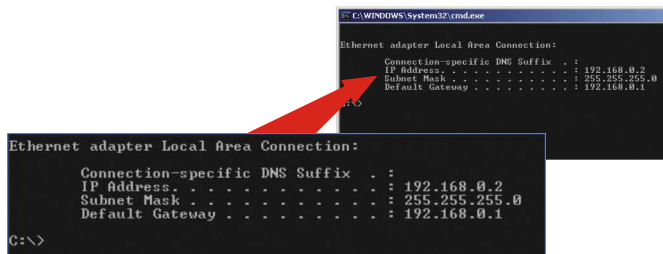


9. The Command Prompt window will appear. Type **ipconfig** at the C:\ prompt and press the **Enter** key.



10. If your IP Address shows the following information your computer is now successfully connected to the router:

IP Address: 192.168.1.x  
Subnet Mask: 255.255.255.0  
Default Gateway: 192.168.1.1



**NOTE:** If the information shown is incorrect, please reboot the computer and retry the steps above.

## 4. Configure the Router

The following set-up information is designed to help you to set-up your router to connect to the Internet. The set-up is different depending upon the type of Internet Connection you have with your ISP. If you're not sure what type of connection you have please contact your Internet Service Provider and collect the required information, which is located in the “**Prepare for Installation**” section at the beginning of this Quick Installation Guide.

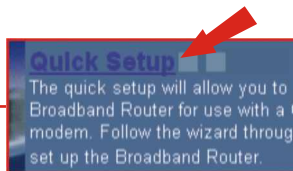
1. Launch your Internet browser (Explorer or Netscape), and then type **http://192.168.1.1** in the address bar and hit the **Enter** key.
2. The login screen will appear; click **LOGIN** to access the **Quick Setup**.



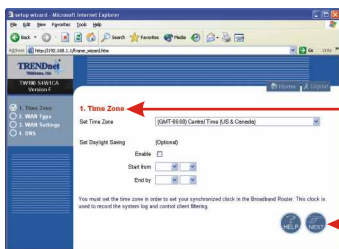
A screenshot of a web browser dialog box titled "LOGIN PASSWORD". The dialog has a light blue background and a dark blue header. Below the header, the text "Password:" is followed by a white text input field. At the bottom of the dialog, there are two buttons: "LOGIN" and "CANCEL", both with a light blue gradient and a thin border.

**NOTE:** By default, no password has been set on the router.

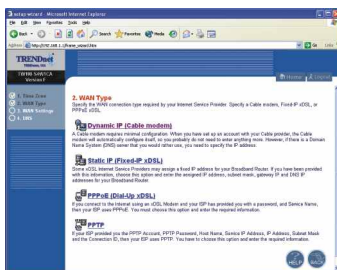
3. Click **Quick Setup** to configure your Router for Broadband Internet access.



4. Click on the dropdown menu to select the appropriate time zone. If your region runs on Daylight Savings Time, you should enable the “Set Daylight Saving” option and input the dates and times when Daylight Savings Time goes into and out-of effect. Then, click **Next**.

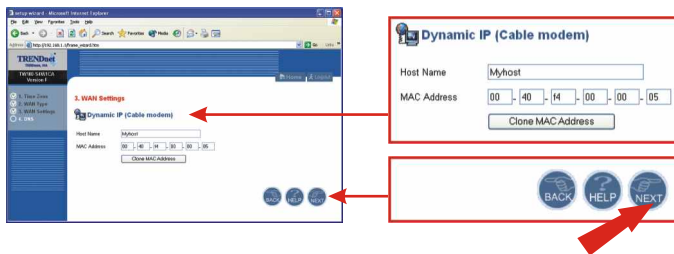


5. Select the appropriate WAN connection type by clicking on Dynamic IP, Static IP, PPPoE, or PPTP.

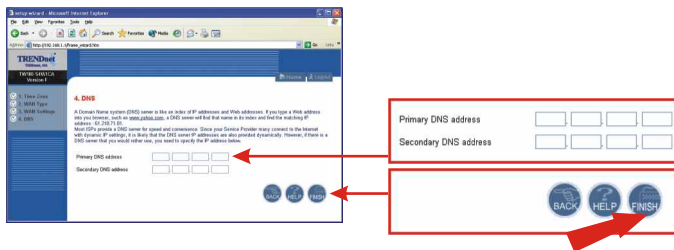


## Dynamic IP

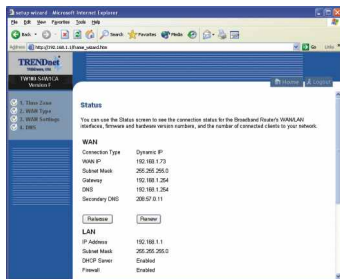
1. Specify the Host Name, (if any) and Clone the MAC Address (if required by your ISP). Click **Next**.



2. Specify Primary and Secondary DNS addresses if you wish to use DNS addresses other than your ISP-provided DNS addresses. Click **Finish**.

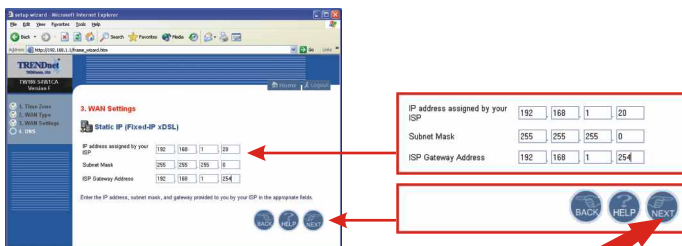


- You may verify your Internet connection on the Status page by typing <http://www.TRENDNET.com> in your browser's address bar and hitting **Enter**. If the website appears, your router is configured properly.

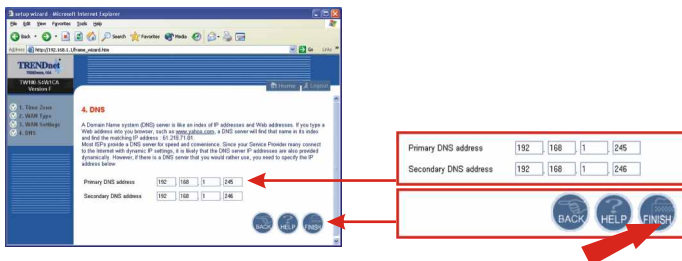


## Static or Fixed IP Cable Connection

- Enter the IP Address, Subnet Mask, and ISP Gateway Address provided by your ISP. Click **Next**.

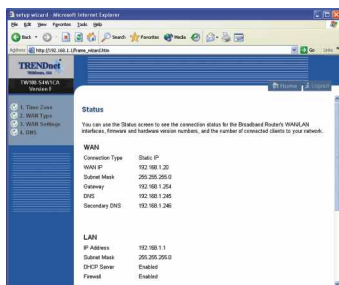


- Specify Primary and Secondary DNS addresses if you wish to use DNS addresses other than your ISP-provided DNS addresses. Click **Finish**.



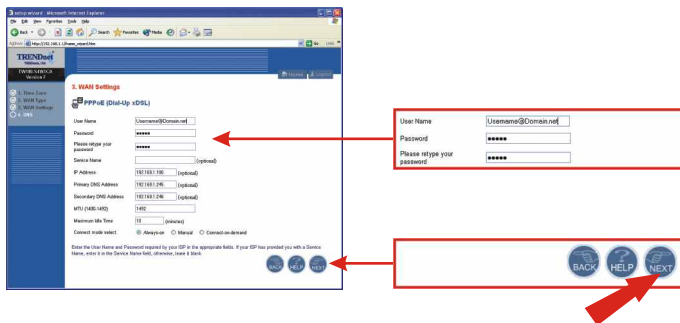
3. You may verify your Internet connection on the Status page by typing **http://www.TRENDNET.com** in your browser's address bar and hitting **Enter**. If the website appears, your router is configured properly.

**NOTE:** If the website does not appear, please verify your connection type with your ISP.



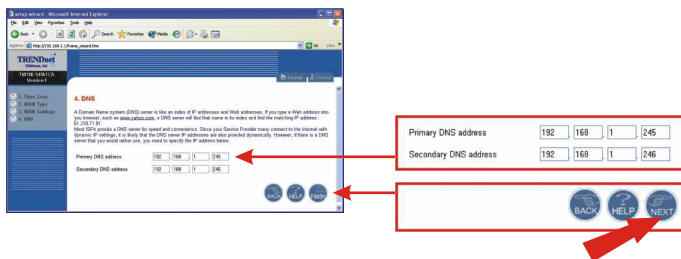
## PPPoE

1. Enter your PPPoE User Name and Password, and retype your password. Then, click **Next**.



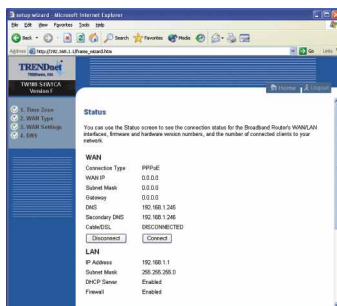


2. Specify Primary and Secondary DNS addresses if you wish to use DNS addresses other than your ISP-provided DNS addresses. Click **Finish**.



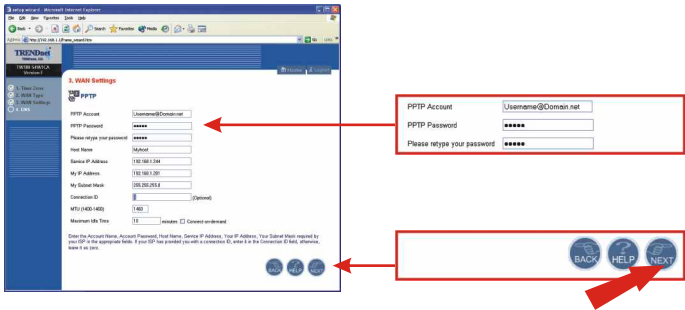
3. You may verify your Internet connection on the Status page by typing <http://www.TRENDNET.com> in your browser's address bar and hitting **Enter**. If the website appears, your router is configured properly.

**NOTE:** If the website does not appear, please verify your connection type with your ISP.

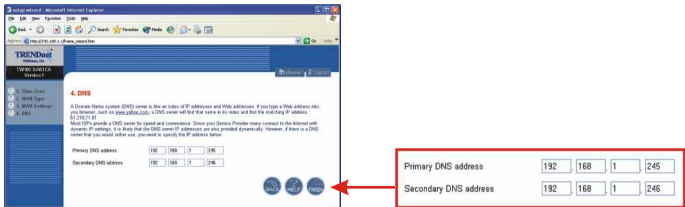


# PPTP

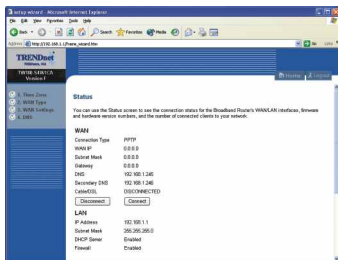
1. Enter your PPTP User Name and Password, and retype your password. Then, click **Next**.



2. Specify Primary and Secondary DNS addresses if you wish to use DNS addresses other than your ISP-provided DNS addresses. Click **Finish**.



3. You may verify your Internet connection on the Status page by typing **http://www.TRENDNET.com** in your browser's address bar and hitting **Enter**. If the website appears, your router is configured properly.



**NOTE:** If the website does not appear, please verify your connection type with your ISP.

For detailed information about the TW100-S4W1CA's configuration and advanced settings, please refer to the Troubleshooting section, User's Guide CD-ROM or TRENDnet's website [www.trendnet.com](http://www.trendnet.com).

**Q1. When I attempt to access <http://192.168.1.1> in my web browser, an error message tells me "The page cannot be displayed." How can I get into the TW100-S4W1CA web configuration page?**

**A1.** Verify your hardware and TCP/IP settings again by reviewing the instructions in sections 1-3. Also, make sure the Power, WAN, and on the LAN lights on the Router's front panel are on. Then, try accessing <http://192.168.1.1> again using your web browser.

**Q2. I don't know what my Internet Connection Type I have. How do I find out?**

**A2.** You can simply contact your Internet Service Provider's (ISP) Customer Service or Technical Support Department for the correct information.

**Q3. I set up my Internet Connection Type and saved it, but I still cannot access the Internet with my PC. What should I do?**

**A3.** Turn off your Cable/DSL modem, Router, PC. Then, turn on the Cable/DSL modem and wait for 60 seconds. Next, turn on the router, wait 60 seconds, and turn on your PC. This simple power cycle normally helps the router connect to your Internet connection. Then, try accessing a website such as <http://www.trendnet.com> with your web browser.

**NOTE:** For more detailed information about the TW100-S4W1CA's configuration and advanced settings, please refer to the User's Guide.

If you still encounter problems settings up the router, we can help. Please have your Internet account information ready, (ISP, Account Type) and contact us using the contact information below.

## **Contact Technical Support**

Telephone: +1-310-891-1100

Fax: +1-310-891-1111

Website: [www.TRENDNET.com](http://www.TRENDNET.com)

E-mail: [support@trendware.com](mailto:support@trendware.com)

## **Technical Support Hours**

7:00AM ~ 6:00PM, Monday through Friday

Pacific Standard Time (except holidays)

# TRENDnet<sup>®</sup>

TRENDware, USA

**What's Next in Networking**

## Product Warranty Registration

Please take a moment to register your product online.  
Go to TRENDware's website at <http://www.TRENDNET.com>

**TRENDware International, Inc.**  
3135 Kashiwa Street  
Torrance, CA 90505

**<http://www.TRENDNET.com>**