



## **TW100-P1W1** **1-port 10/100Mbps Internet Print Station**

TRENDnet's TW100-P1W1 is a multi-function Internet Print Station which combines Internet Station and Print Server in one unit for small workgroups. Designed to be cost-effective, this device allows your entire workgroup to access the Internet, then prints their Internet and other documents on a network printer. Through one server your entire Ethernet or Fast Ethernet network can share a network printer and access the Internet.



### **FEATURES**

- Auto-sensing Nway 10Base-T or 100Base-TX interface (half or full duplex)
- Supports Win3.x/95/98/NTTM, Netware™, Mac, OS/2, LANtastic, and many others
- Easy configuration through Windows-based Administration Program, Web Browser or Telnet
- Print server supports IP, IPX/SPX, NetBEUI, TCP/IP, and Apple EtherTalk (Laser Writer series printers) protocol
- IEEE 1284 compliant Parallel printer port supports bi-directional HP PJI protocol
- Asynchronous WAN port supports up to 230Kbps data transfer (Supports Analog modem up to 56Kbps and ISDN Terminal Adapter BRI up to 128Kbps)
- Monitors communications link for inactivity and drops the connection. (user defined)
- Built-in firewall and secure gateway for LAN users
- 5 Year Warranty

### **BENEFITS**

- **Integration Friendly:**  
Designed to easily integrate into Ethernet and Fast Ethernet network.
- **Cost Effective:**  
Combines Internet Station and Print Server in one unit, saves router costs, phone line charges, and on-line charges.
- **Flexible:**  
Can be used in either LAN or WAN and 10Base-T or 100Base-TX environments.
- **Security:**  
Built-in firewall and secure gateway for LAN users.
- **Performance:**  
Asynchronous WAN port supports up to 230Kbps data transfers. Full 100Mbps connectivity significantly boosts network printer performance.

# TW100-P1W1

## 1-port 10/100Mbps Internet Print Station

### SPECIFICATIONS

#### LAN Standards:

- IEEE 802.3 (10Base-T), IEEE 802.3u, (100Base-TX), and ANSI/IEEE 802.3 Nway auto-negotiation

#### LAN Port:

- One Auto-sensing 10/100Mbps Nway UTP/STP RJ-45 port

#### WAN Port:

- One DB-9 RS232 COM port (supports up to 230Kbps)

#### Network Cables:

- CAT 3, 4, 5 UTP/STP for 10Base-T
- CAT 5 UTP/STP for 100Base-TX

#### Supported Frame (Print Server):

- IEEE 802.2, IEEE 802.3, Ethernet II, and Ethernet SNAP

#### Supported Network Protocol:

- IP, IPX/SPX, NetBEUI, TCP/IP, and Apple EtherTalk

#### Supported Internet Protocol:

- PPP, PAP/CHAP, NAT, TCP/IP, DHCP, ARP, ICMP, FTP, Telnet, and HTTP

#### LED's:

- Power/TX, Link/RX, COM, and LPT

#### Dimensions:

- 164 x 118.2 x 30 mm / 6.46" x 4.65" x 1.18" (L x W x D)

#### Weight:

- 245 grams / 8.6 Oz (excluding AC power adapter)

#### Power Consumption:

- 6 Watts max. (12V DC, 500mA)

#### Temperature:

- Operating: 0° - 50° C / 32° - 122° F
- Storage: -10° - 50° C / -13° - 131° F

#### Humidity:

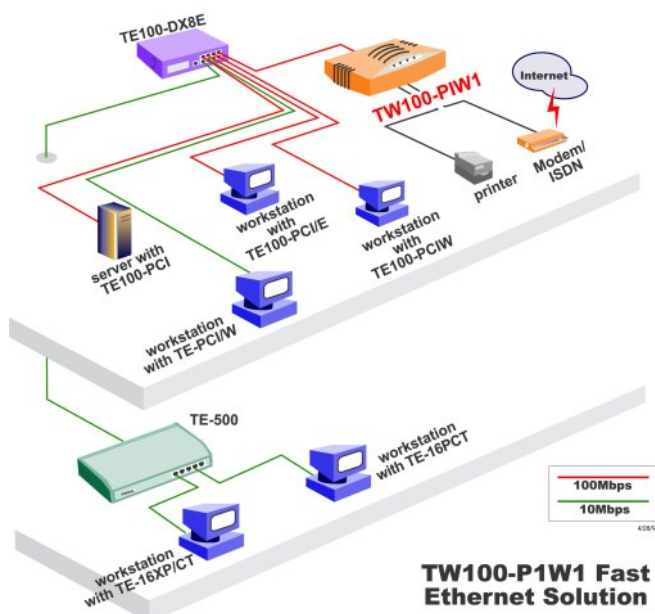
- Operating: 10% - 90% (non-condensing)
- Storage: 5% - 95% (non-condensing)

#### Certifications:

- FCC, UL, VCCI, C-tick, and CE



### NETWORKING SOLUTIONS



**To Order Please Call:**  
**1-888-326-6061**

### PRODUCT INFORMATION

\*\*\* TW100-P1W1  
1-port 10/100Mbps Internet Print Station

### ORDERING INFORMATION

**TRENDware International, Inc.**  
3135 Kashiwa Street  
Torrance, CA. 90505. USA  
Tel: 310-891-1100  
Fax: 310-891-1111  
Web: [www.TRENDNET.com](http://www.TRENDNET.com)  
Email: [sales@trendware.com](mailto:sales@trendware.com)

**TRENDnet**  
TRENDware, USA