

TW100-BRV304

**Cable/DSL Advanced VPN Firewall Router
Quick Installation Guide**

**Guide d'installation rapide pour le
Routeur Firewall Câble/DSL avec VPN avancée**

**Schnell Anleitung
DSL/Kabel Spezialisierter VPN Firewall Router**

**Guía de Instalación Rápida del
Enrutador Firewall VPN Cable/DSL Avanzado**

Version 06.04.04



TRENDnet[®]
TRENDware, USA
What's Next in Networking

Table of Contents

English	1
1. Prepare for Installation	1
2. Install Hardware	3
3. Configure the computer's TCP/IP Settings	4
4. Configure the Router	10
Troubleshooting	15

English QIG

1. Prepare for Installation

Thank you for purchasing the TW100-BRV304. This router will allow you to securely share your Internet connection, files, and other resources with multiple users. This router will allow you to securely share your Internet connection, files, and other resources with multiple users.

This guide will help you set up and configure your router. Following the installation instructions should be quick and easy. If you run into problems, please refer to the Troubleshooting section or the more detailed installation procedures on the User's Guide. If you need further technical support, please visit www.trendnet.com or call by phone.

Verify Package Contents

Please make sure you have everything in the box:



Verify Equipment

Before installing the router you should have a:

1. Cable/DSL Modem with an Ethernet Port Set-up
2. Working Internet account
3. Web Browser such as Internet Explorer (5.0 or higher) or Netscape Navigator (4.7 or higher)
4. RJ-45 Network Cable for each computer connected to the router.
5. TCP/IP protocol installed on computer(s)
6. Computers with "Client for Microsoft Networks" installed.

Collect Internet Service Provider (ISP) Information

During the installation of your router the Set-Up Wizard will ask you for specific Internet Service Provider ISP information you should have been provided from your ISP to set up your Cable or DSL connection. The information is different based on your type of Internet Connection. Please verify your Internet Connection type and ensure you have the following information:

Dynamic IP Cable Connection

Nothing required. IP address will automatically be assigned by the ISP.

Static or Fixed IP Cable Connection

Internet IP Address: ____ . ____ . ____ . ____ (eg. 215.24.24.129)

Subnet Mask: ____ . ____ . ____ . ____

Gateway IP Address: ____ . ____ . ____ . ____

Primary DNS: ____ . ____ . ____ . ____

Secondary DNS: ____ . ____ . ____ . ____

PPPoE Connection

Login Name: _____

Password: _____

PPTP Connection

Login Name: _____

Password: _____

MAC Address Cable Connection

Your ISP's Registered MAC Address for your Internet

Account: ____ . ____ . ____ . ____ . ____ . ____ (eg. 00-0E-FF-04-CC-EE)

(The MAC Address is normally associated with the Cable/DSL modem or the Network Card in the PC)

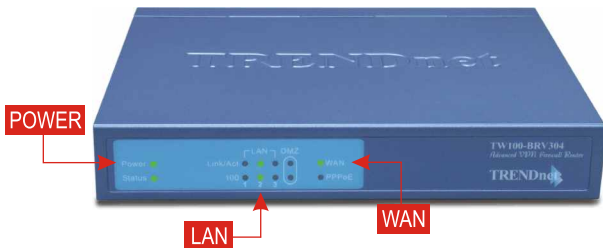
2. Install Hardware

1. Turn off your Cable/DSL Modem, Router, and PC.
2. Connect one RJ-45 network cable from the Modem's Ethernet port to the Router's WAN port.
3. Connect a different RJ-45 network cable from one of the Router's LAN ports to your computer's network port.
4. Turn on your Cable/DSL modem.
5. Turn on your router.
6. Turn on your computer.



Verify Hardware Installation

Verify that the following router front panel lights are on: Power, WAN, and one LAN port. (for each computer connected to your router)

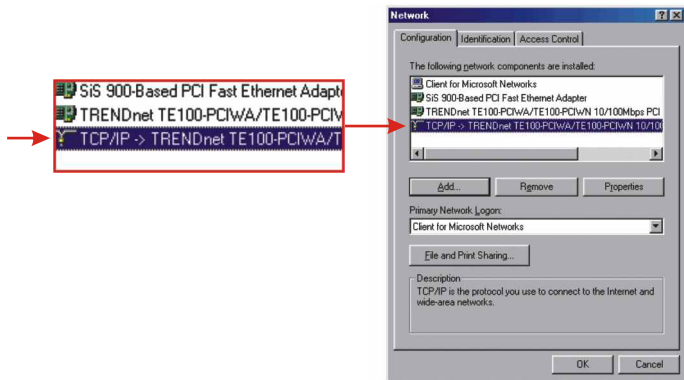


3. Configure the computer's TCP/IP Settings

This next section will ensure that your computer can communicate with your router. To do this, you will need to configure the TCP/IP settings in your Operating System (OS). Configuration instructions for Windows OS-based computers are shown below. For computers running other operating systems, see your system documentation for configuration instructions.

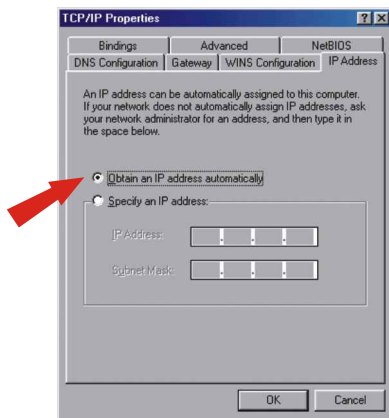
Windows 95/98/98SE/ME

1. Find the **Start** Button located on the Desktop.
2. Click **Start**; Click **Settings** and then click on **Control Panel**.
3. Double-Click the **Network** Icon and the Network Properties box will appear.
4. Under the General Configuration Tab, locate and select **TCP/IP** with the corresponding network card (such as TRENDnet TE100-PCIWN 10/100Mbps Network Adapter). Then, click on the **Properties** button, and the TCP/IP window will appear.

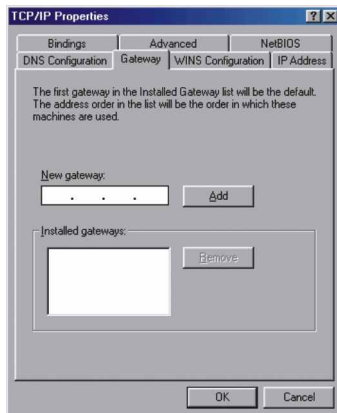


NOTE: If you have a Static IP address connection, write down the IP addresses from the following sections before you change the settings.

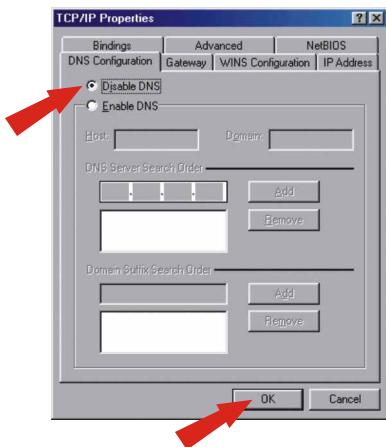
5. Under the IP Address Tab, select **Obtain an IP address automatically**.



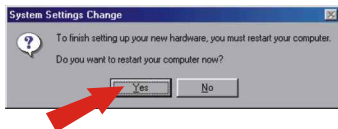
6. Now go to the Gateway tab and make sure no Gateways are listed in the Installed Gateway's section. If there is Gateway installed, click **Remove** to remove it.



7. Go to the DNS Configuration tab, and click **Disable DNS**. Then click **OK**.

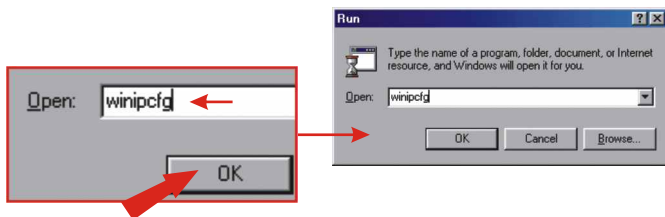


8. Click **OK** on the TCP/IP Properties box.
9. Click **OK** on the Network Box.
10. At this point, the installation may require files from your Windows CD-ROM. If this happens, insert your Windows 98 CD-ROM into your CD-ROM drive and select **CD-ROM drive** to load the files.
11. After the files load and the "System Settings Change" message appears, click **Yes** to reboot your system. Your computer will now load your new TCP/IP settings.

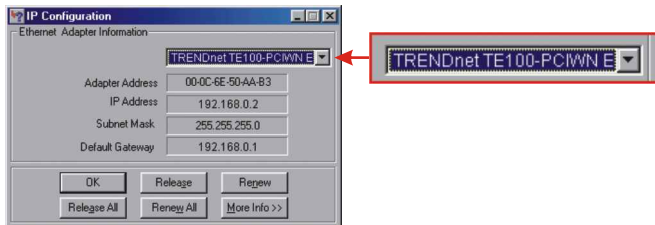


NOTE: If the message does not appear, you will need to manually restart your computer.

12. After your system reboots, click **Start**; click on **Run**. Then type **wiipcfg** in the field and then click **OK**.



13. The IP configuration box will appear. Choose your Network adapter from the dropdown box (such as TRENDnet TE100-PCIWN 10/100Mbps network adapter) and the current IP address information of your computer will show in the box, including the following: IP Address, Subnet Mask and Default Gateway.



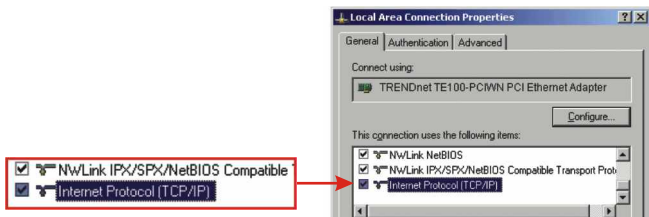
14. If your IP Address shows the following information, your computer is now successfully connected to the router:

IP Address: 192.168.0.x
Subnet Mask: 255.255.255.0
Default Gateway: 192.168.0.1

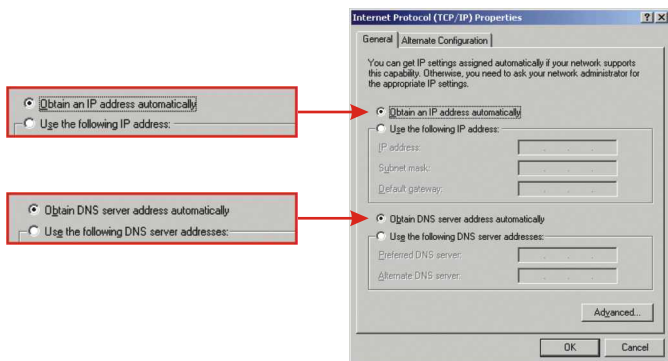
NOTE: If the information shown is incorrect, please reboot and retry the steps above.

Windows 2000/XP

1. Click **Start**; Drag Mouse to **Settings** and then click on **Control Panel**.
2. Double-click the **Network Connections** Icon.
3. Right-click on the **Local Area Connection** Icon, and then click on **Properties**. The Local Area Connection Properties box will appear.
4. Under the "General Configuration" Tab, locate and select **TCP/IP** and then click **Properties**. The Internet Protocol (TCP/IP) Properties box will appear.

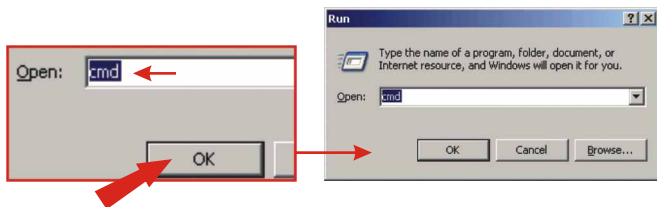


NOTE: If you have a Static IP address connection, write down the IP addresses from the following sections before you remove them from the settings.

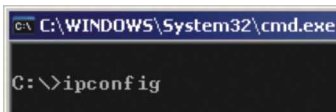


5. Click on **Obtain an IP address automatically** and **Obtain DNS Server address automatically**.

6. Click **OK**.
7. Click **Close** on the Local Area Connection Properties box.
8. Click on **Start**; click on **Run**. Then type **cmd** and click **OK**.

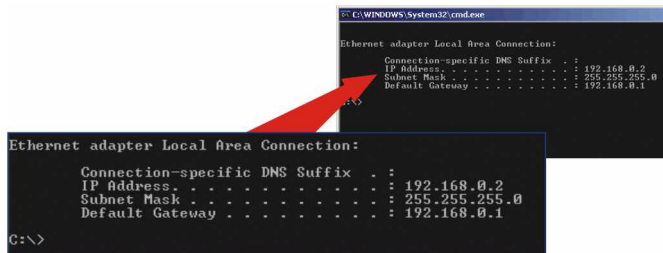


9. The Command Prompt window will appear. Type **ipconfig** at the C:\ prompt and press the **Enter** key.



10. If your IP Address shows the following information your computer is now successfully connected to the router:

IP Address: 192.168.0.x
Subnet Mask: 255.255.255.0
Default Gateway: 192.168.0.1



NOTE: If the information shown is incorrect, please reboot the computer and retry the steps above.

4. Configure the Router

The following set-up information is designed to help you to set-up your router to connect to the Internet. The set-up is different depending upon the type of Internet Connection you have with your ISP. If you're not sure what type of connection you have please contact your Internet Service Provider and collect the required information, which is located in the “**Prepare for Installation**” section at the beginning of this Quick Installation Guide.

Dynamic IP Cable Connection

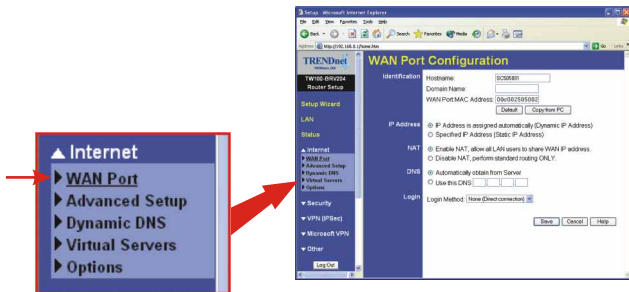
Launch your Internet browser (Explorer or Navigator) and type in <http://www.trendnet.com>. If the web site comes up in the browser, your router is configured properly.



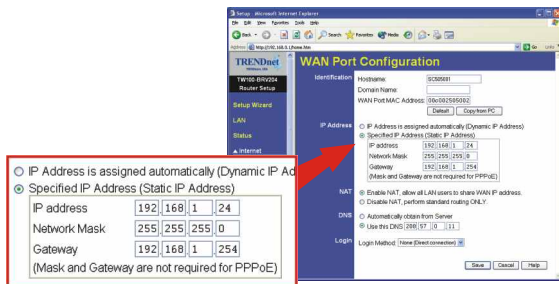
NOTE: If the website does not appear, please verify your connection type with your ISP.

Static or Fixed IP Cable Connection

1. Launch your Internet browser (Explorer or Netscape), and then type **http://192.168.0.1** in the address bar and hit the **Enter** key. The TW100-BRV304's configuration page should appear.
2. Click on the **Internet Option** on the left-hand side of the screen and select **WAN Port**. The WAN Port configuration page will appear.



3. Select the **Specified IP Address**, (Static IP Address) and the information provided by your ISP, and click **Save**.

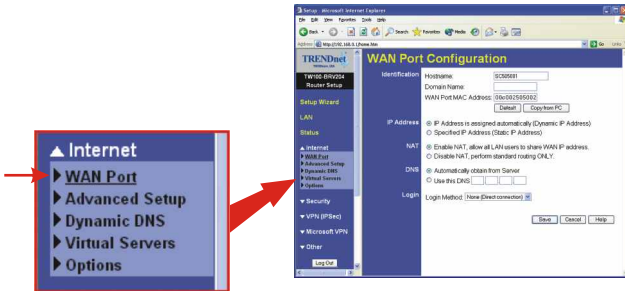


4. Launch your web browser, (Internet Explorer or Netscape Navigator) type **http://www.trendnet.com** in the address bar, and hit the **Enter** key. If the website appears, your router is configured properly.

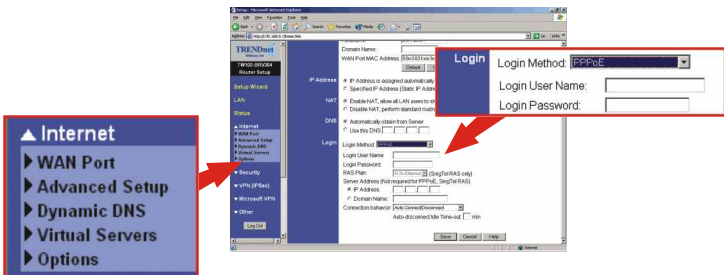
NOTE: If the website does not appear, please verify your connection type with your ISP.

PPPoE Connection

1. Launch your Internet browser (Explorer or Netscape), and then type **http://192.168.0.1** in the address bar and hit the **Enter** key. The TW100-BRV304's configuration page should appear.
2. Click on the **Internet** option on the left-hand side of the screen and select **WAN Port**. The WAN Port configuration page will appear.



3. Select **PPPOE** for the Login Method; the User Name/Password field will appear. Enter PPPOE **User Name** and **Password**, and click **Save**.

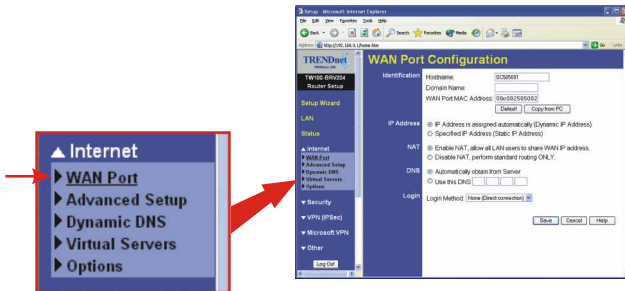


4. Launch your web browser, (Internet Explorer or Netscape Navigator) type **http://www.trendnet.com** in the address bar, and hit the **Enter** key. If the website appears, your router is configured properly.

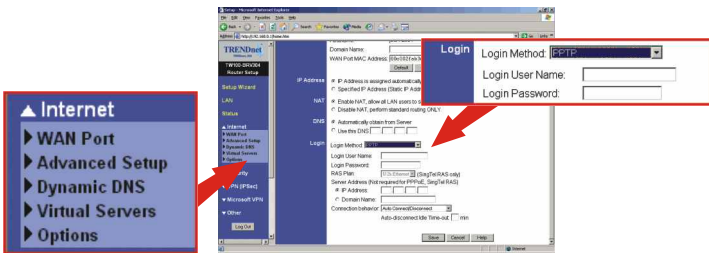
NOTE: If the website does not appear, please verify your connection type with your ISP.

PPTP Connection

1. Launch your web browser, (Internet Explorer or Netscape Navigator), type <http://192.168.0.1> in the address bar, and hit the **Enter** key. The Tw100-BRV304's configuration page should appear.
2. Click on the **Internet** option on the left-hand side of the screen and select **WAN Port**. The WAN Port configuration page will appear.



3. Select **PPTP** for the Login Method, and the User Name/Password field will appear. Enter your **User Name/Password** under PPTP and then click **Save**.

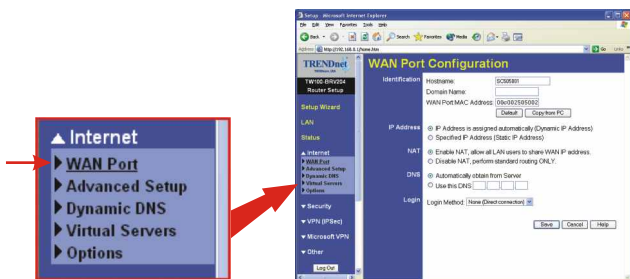


4. Launch your web browser, (Internet Explorer or Netscape Navigator) type <http://www.trendnet.com> in the address bar, and hit the **Enter** key. If the website appears, your router is configured properly.

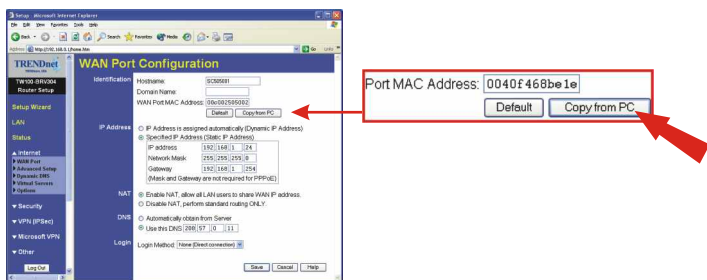
NOTE: If the website does not appear, please verify your connection type with your ISP.

MAC Address Cable Connection

1. Launch your Internet browser (Explorer or Netscape), type **http://192.168.0.1** in the address bar, and hit the **Enter** key. The TW100-BRV304's configuration page should appear.
2. Click the **Internet** option on the left side of the screen, and select **WAN Port**. The WAN Port configuration page will appear.



3. At the MAC Address section, click on **Copy from PC** and click **Save**.



NOTE: If the registered MAC Address your ISP gave you is different than your PC's MAC Address, please enter the registered MAC Address for your account, and click **Save**.

NOTE: If you still cannot access Internet, please verify your connection type with your ISP.

For help with advanced features such as URL Filtering, Access Control, and VPN Tunneling, please refer to the User's Guide located on your CD-ROM.

Q1. When I attempt to access <http://192.168.0.1> with my web browser, an error message tells me "The page cannot be displayed." How can I get into the TW100-BRV304 web configuration page?

A1. Verify your hardware and TCP/IP settings again by reviewing the instructions in sections 1-3. Also, make sure the Power, WAN, and on the LAN lights on the Router's front panel are on. Then, try accessing <http://192.168.0.1> again using your web browser.

Q2. I don't know what Internet Connection Type I have. How do I find out?

A2. You can simply contact your Internet Service Provider's (ISP) Customer Service or Technical Support Department for the correct information.

Q3. I set up my Internet Connection Type and saved it, but I still cannot access the Internet with my PC. What should I do?

A3. Option 1: Go to the Status section of the configuration page, and click the **Connection Detail** button. Click the **Release/Renew** button to allow the router to refresh your connection. Then, try accessing a website such as <http://www.trendnet.com> with your web browser.

Option 2: Turn off your Cable/DSL modem, Router, PC. Then, turn on the Cable/DSL modem and wait for 60 seconds. Next, turn on the router, wait 60 seconds, and turn on your PC. This simple power cycle normally helps the router connect to your Internet connection. Then, try accessing a website such as <http://www.trendnet.com> with your web browser.

Note: For more detailed information about the TW100-BRV304's configuration and advanced settings, please refer to the User's Guide.

If you still encounter problems settings up the router, we can help. Please have your Internet account information ready, (ISP, Account Type) and contact us using the contact information below.

Contact Technical Support

Telephone: +1-310-626-6252
Fax: +1-310-626-6267
Website: www.TRENDNET.com

Technical Support Hours

7:00AM ~ 6:00PM, Monday through Friday
Pacific Standard Time (except holidays)

TRENDnet[®]

TRENDware, USA

What's Next in Networking

Product Warranty Registration

Please take a moment to register your product online.
Go to TRENDware's website at <http://www.TRENDNET.com>

TRENDware International, Inc.
3135 Kashiwa Street
Torrance, CA 90505

<http://www.TRENDNET.com>