



## 4-Port ADSL Modem Firewall Router

### TW100-BRM504 <sup>(b1)</sup>

TRENDnet's TW100-BRM504 includes an ADSL/ADSL2/ADSL2+ Modem, SPI Firewall, Router, and 4-Port Switch ALL-IN-ONE box. Simply plug it into your DSL phone line and you have a high-performance network for your home or small office. Security includes a Stateful Packet Inspection Firewall (SPI), Denial of Service Attack prevention, VPN pass-through, and advanced Rule-Based Firewall, while the Application Level Gateway (ALG) and Port Forwarding features add flexibility so designated programs such as gaming and web-conferencing programs can work around the Firewall. Control user Internet access via URL, time, and MAC address, while Logs and reports provide monitoring of intrusion attempts and traffic. Set-up is easy with UPnP support and a Quick Install Wizard.

## FEATURES

- Supports Router (Router+Modem) or Modem (Modem only) Mode
- Compliant with ADSL, ADSL2, ADSL2+ on G.dmt, G.lite and T1.413 Multi-Mode PSTN Environments
- Compliant with PPPoE, PPPoA or IPoA Connection Types
- Supports Filtering by URL, MAC Address, Services and Date/Time
- Supports Virtual DMZ, Virtual Servers (Port Forwarding) and Firewall Rules
- Supports RIP/Static Routing and Dynamic DNS Service
- Supports 100 sessions of VPN Pass-Through for PPTP, IPSec and L2TP
- NAT/NAPT, Rule-Based and SPI Firewall protect against DoS (Denial of Service) attacks
- Real-Time email alert and logs when attack/unauthorized Internet activity occurs
- DHCP Server feature supports up to 253 Users
- Supports UPnP and ALGs Support Internet applications such as Email, FTP, Gaming, ICQ, Net Meeting, PING, Telnet, and more
- Supports most operating systems, such as Windows 95/98/ME/NT/2000/XP, Unix, and Mac
- Easy Configuration and Remote Management with Web Browser (HTTP)
- Built-in Flash memory for firmware upgrade
- 5-year Warranty

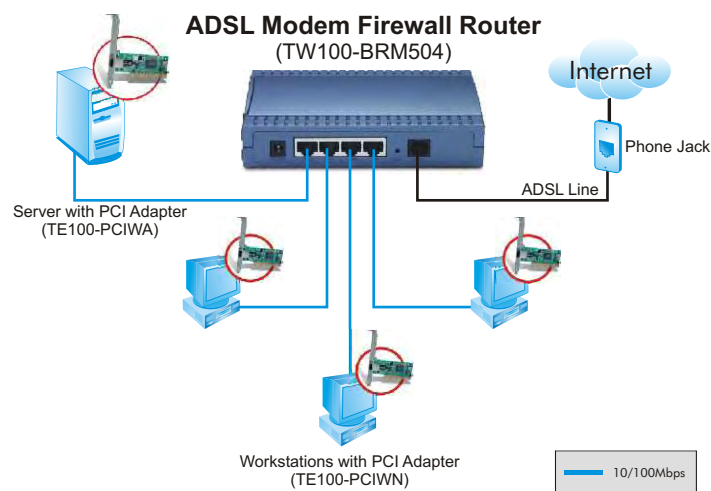
# 4-Port ADSL Modem Firewall Router

## TW100-BRM504 (b1)

### SPECIFICATIONS

Hardware	
Standards	• IEEE 802.3 10Base-T; IEEE 802.3u 100Base-TX
Protocols	• NAT/NAPT, PPPoE & PPPoA, HTTP, DHCP (Client/Server), TCP/IP & UDP, PAP & CHAP, RIP1, RIP2, DDNS, UPnP
Firewall	• NAT Firewall with ALGS, Rule-Based Policy Firewall DoS (Denial of Service), Email Alert & Log
Security	• URL Filter, Access Control, Local Password
VPN Pass Through	• PPTP, IPSec, L2TP
ATM	• Supports AAL5, UBR/CBR/VBR, VPI Range (0~255) and VCI range (32~65535), OAM F4/F5 loopback, Auto-Detection for VPI/VCI and Multiplexing Method (VC-Based, LLC-Based) • Payload Encapsulation: - RFC2684 (RFC 1483), Multi-Protocol over ATM, Bridge Mode - RFC2225 (RFC1577), IPoA - RFC2364, PPP over ATM (CHAP & PAP) - RFC2516, PPPoE over ATM
Management	• Web-Based Management (HTTP)
WAN Port (ADSL line Interface)	• Complies with G.dmt (G.992.1) Annex A • Complies with G.lite (G.992.2) and T1.413 Annex A • ITU G.992.3 Annex A ADSL2, ITU G.992.5 Annex A ADSL2+ • Connector: RJ-11 • Line Impedance: 100 Ω
LAN Port	• 4 x RJ-45 10/100Mbps Auto-Negotiation Port
Reset Button	• Reset to Factory Default
LED	• Power, Status, WAN, 4 x 100LAN, 4 x 10LAN
Power	• 12V DC 500mA External Power Adapter
Dimensions (L x W x H)	• 153 x 102 x 35.5mm (6 x 4 x 1.4 inches)
Weights	• 224g (7.9 oz)
Temperature	• Operation: 0°C~ 40°C (32°F~104°F), Storage: -20°C~ 70°C (-4°F~158°F)
Humidity	• Operating: 10 ~ 90% RH , Storage: 5 ~ 95% RH
Certification	• CE, FCC

### NETWORKING SOLUTIONS



### PACKAGE CONTENTS

- TW100-BRM504
- Quick Installation Guide
- CD-ROM (User's Guide)
- 1Cat.5 Cable / 1RJ-11 Telephone Cable
- Power Adapter (12V DC 800mA)

### RELATED PRODUCTS

TW100-BRM204	Cable/DSL VPN Firewall Router
TW100-BRM304	Cable/DSL Advanced VPN Firewall Router
TEW-435BRM	54Mbps 802.11g ADSL Firewall Modem Router

### ORDERING INFORMATION

#### TRENDNET

3135 Kashiwa Street, Torrance, CA 90505 USA  
 Tel: 1-888-777-1550  
 Fax: 310-891-1111  
 Web: [www.trendnet.com](http://www.trendnet.com)  
 Email: [sales@trendnet.com](mailto:sales@trendnet.com)

To Order Please Call:

**1-888-326-6061**

