

# TW100-BRM504

**Broadband Internet Access**

**ADSL Modem**

**NAT Router**

**4-Port Switching Hub**

---

## ***Quick Install Guide***

---



**This guide covers only the most common situations. Please refer to the full User Manual on the CD-ROM if your LAN has any of the following:**

- **Router**
- **Existing DHCP Server**
- **PCs using Fixed (Static) IP Addresses**

# Requirements

---

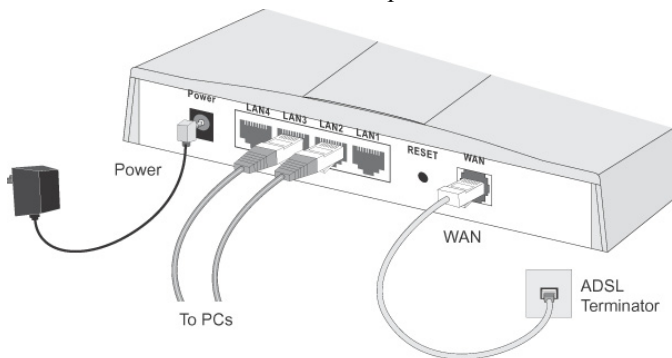
- ADSL service, and an ISP account.
- Standard Network cables.
- TCP/IP network protocol installed on each PC.

## Setup

---

### ① Physical Installation

1. Ensure the TW100-BRM504 is powered OFF.



2. Use standard LAN cables to connect PCs to the Switching Hub ports on the TW100-BRM504. Both 10BaseT and 100BaseT connections can be used simultaneously.
3. Connect the supplied ADSL cable from the WAN port on the TW100-BRM504 (the RJ11 connector) to the ADSL terminator provided by your phone company.
4. Connect the supplied Power Adapter and power on.
5. Check the LEDs
  - The *Power* LED should be ON.

- The *Status* LED should flash, then turn Off. If it stays on, there is a hardware error.
- For each LAN (PC) connection, one of the LAN LEDs should be ON (provided the PC is also ON.)
- The *WAN* LED should be ON.

## ② Configuration

1. Start your PC. If it is already started, restart it. It will then obtain an IP Address from the TW100-BRM504's DHCP Server.
2. Start your WEB browser. In the *Address* box, enter the following:  

```
HTTP://192.168.0.1
```
3. When prompted, use the following username and password.
  - User name: admin
  - Password: password
4. The *Setup Wizard* will run automatically.
5. Step through the Wizard until finished. Refer to the data from your ISP, and the table below, to ensure your choices are correct.

Connection Type	Data required.
Dynamic IP Address	Usually, none.
Specified (Fixed) IP Address, or IPoA (IP over ATM)	IP Address allocated to you, and related information.
PPPoE, PPPoA	Login name and password. If using a fixed IP address, the IP address and related information.

6. On the final screen of the Wizard, run the test and check that an Internet connection can be established.  
If the connection fails, check both your data and the ADSL connection

## PC Setup - Windows

---

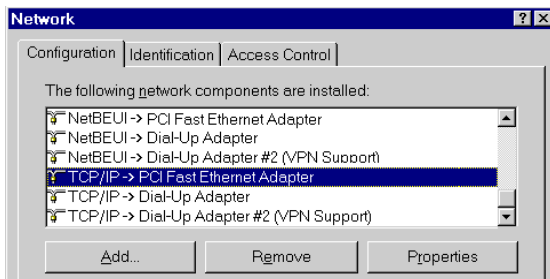
### ① TCP/IP Setup

- **If using the default TW100-BRM504 settings, and the default Windows TCP/IP settings, no changes need to be made.**
- If using a specified (fixed) IP address on your PC, refer to the user manual for details of the required changes:
  - The *Gateway* must be set to the IP address of the TW100-BRM504
  - The *DNS* should be set to the address provided by your ISP.

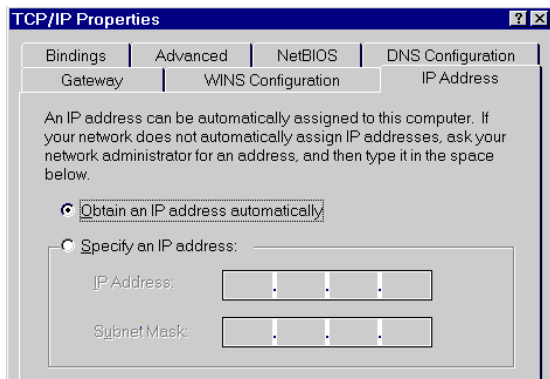
## Windows 95

On Windows 95, TCP/IP was not installed by default. To check if TCP/IP is installed:

1. Use *Start - Settings - Control Panel - Network* to view a screen like the example below.



2. If TCP/IP is not listed, click *Add - Protocol - Microsoft - TCP/IP* to install it.
3. The default TCP/IP properties are correct and do not need to be changed. To view the properties, select the TCP/IP entry for your network card, as shown above, and click the *Properties* button.



4. "Obtain an IP address automatically" should be selected.

## ② Internet Access

### For Windows 9x/ME/2000

1. Select *Start Menu - Settings - Control Panel - Internet Options*.
2. Select the *Connection* tab, and click the *Setup* button.
3. Select "I want to set up my Internet connection manually, or I want to connect through a local area network (LAN)" and click *Next*.
4. Select "I connect through a local area network (LAN)" and click *Next*.
5. Ensure all of the boxes on the following Local area network Internet Configuration screen are **unchecked**.
6. Check the "No" option when prompted "Do you want to set up an Internet mail account now?".
7. Click *Finish* to close the Internet Connection Wizard. Setup is now completed.

### For Windows XP

1. Select *Start Menu - Control Panel - Network and Internet Connections*.
2. Select *Set up or change your Internet Connection*.
3. Select the *Connection* tab, and click the *Setup* button.
4. Cancel the pop-up "Location Information" screen.
5. Click *Next* on the "New Connection Wizard" screen.
6. Select "Connect to the Internet" and click *Next*.
7. Select "Set up my connection manually" and click *Next*.
8. Check "Connect using a broadband connection that is always on" and click *Next*.
9. Click *Finish* to close the New Connection Wizard. Setup is now completed.

# Macintosh Setup

---

1. Open the TCP/IP Control Panel.
2. Select *Ethernet* from the *Connect via* pop-up menu.
3. Select *Using DHCP Server* from the *Configure* pop-up menu. The DHCP Client ID field can be left blank.
4. Close the TCP/IP panel, saving your settings.

If using manually assigned IP addresses instead of DHCP, the required changes are:

- Set the *Router Address* to the TW100-BRM504's IP Address.
- Ensure your DNS settings are correct.

# Linux Setup using X Windows

---

Follow this procedure to set your system to act as a DHCP client and obtain an IP Address from the TW100-BRM504:

1. Start your X Windows client.
2. Select *Control Panel - Network*
3. Select the "Interface" entry for your Network card. Normally, this will be called "eth0".
4. Click the *Edit* button, set the "protocol" to "DHCP", and save this data.
5. To apply your changes
  - Use the "Deactivate" and "Activate" buttons
  - OR, restart your system.