



TRENDNET®



User's Guide

TVP-SP4BK

Table Contents

INTRODUCTION.....	3
GETTING TO KNOW THE CONFERENCE PHONE KIT	3
PACKING CONTENTS.....	3
IDENTIFYING COMPONENTS	3
GETTING STARTED	5
MINIMUM SYSTEM REQUIREMENTS	5
SETTING UP THE CONFERENCE PHONE KIT	5
SOFTWARE / DRIVER INSTALLATION.....	5
APPLIACTIONS INSTALLED	7
EXPLORING THE CONFERENCE KIT DISPLAY.....	9
DISPLAY ICONS	9
MAIN PAGE	10
CONTACT LIST PAGE.....	10
CONFIGURATION MENU.....	11
GUIDE TO BASIC FUNCTIONS	12
CALL SKYPE™ CONTACT	12
CALL AN ORDINARY PHONE NUMBER (SKYPE™ OUT).....	12
ANSWER A CALL	12
MAKE A CONFERENCE CALL	12
REDIAL OUTGOING CALLS	13
REDIAL ANY CALL FROM HISTORY	13
OPERATIONS DURING A CALL	13
APPENDIX.....	14
SPECIFICATIONS.....	14
TROUBLESHOOTING.....	16



Introduction

Welcome to the Bluetooth Conference Bridge manual. In this manual, you will learn how to use this Conference Phone Kit to do all popular Skype standard functions, such as Conference call, Contacts, History, SkypeOut, SkypeIn, etc. This Conference Phone kit enables you to make and receive Skype calls anywhere, without being in front of the PC. With advanced acoustic echo cancellation technology and superior noise suppression design, this Bluetooth Conference Phone can provide you business quality conferencing experience.

Key Features

- Advanced acoustic echo cancellation technology
- Superior noise suppression
- Support long range Bluetooth Class 1 standard that reaches up to 100 meters distance in outdoor clean environment.
- Feature easy of use graphical user interface.
- Support long life Lithium rechargeable battery.
- Support advanced power down management to extend battery life.
- Support USB-port charging while traveling on the road.

Getting to know the Conference Phone Kit

Packing Contents

- TVP-SP4B Bluetooth Conference Phone
- TBW-104UB Advanced High Power Bluetooth USB Adapter
- 5V 1A Power Adapter with miniUSB connector
- Quick Guide
- Utility & Driver CD-ROM

Identifying Components

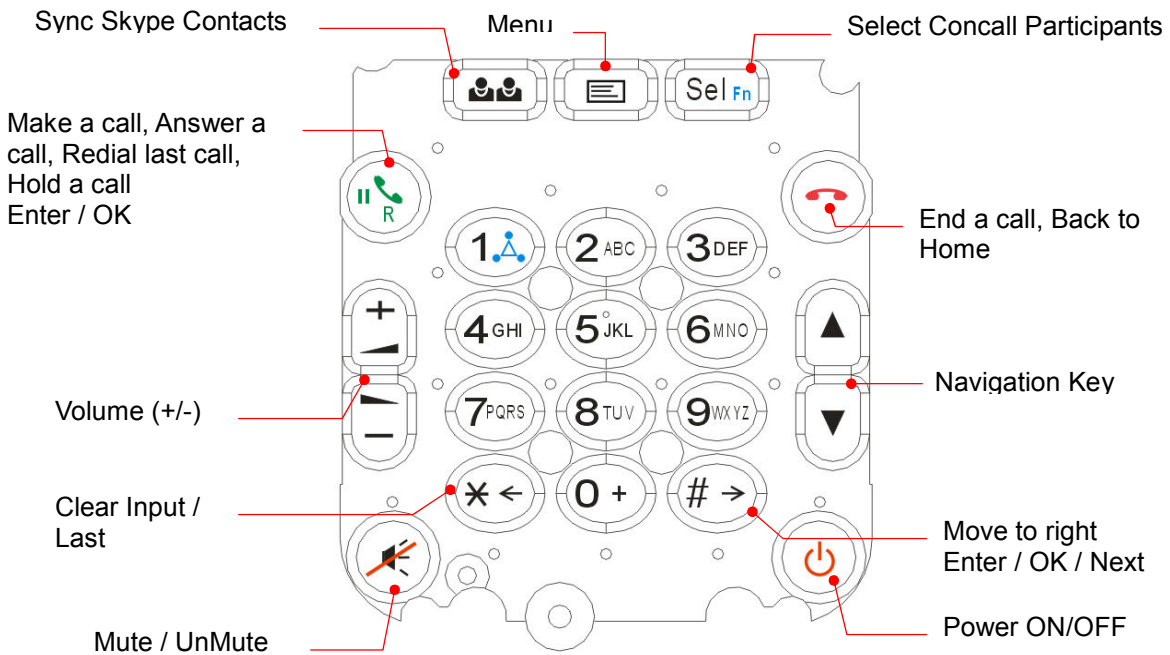
TBW-104UB



TVP-SP4B



TVP-SP4B



Getting Started

Minimum System Requirements

- PC running Windows XP, 2000
- Skype software installed
- At least 600 MHz processor
- At least 128 MB RAM
- At least 50MB free disk space on your hard drive
- CD-ROM drive

Setting up the Conference Phone kit

1. Connect USB cable to charge battery pack (please let the battery charge for a full 6 hours before using the phone for the first time)

Software / Driver Installation

If you have any Bluetooth driver (software) previously installed on your computer or built-in bluetooth device, please remove the driver and disable Bluetooth device first!

1. Please insert the Utility & Driver CD into CD-ROM drive, and then follow the instruction below to install Utility and drivers.

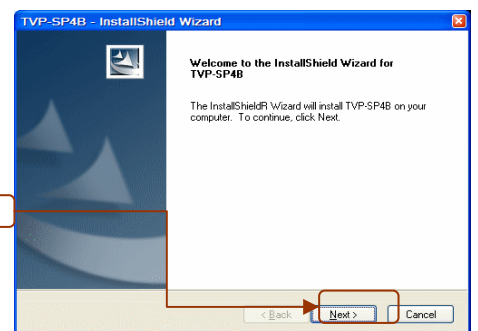
Note: DO NOT connect the TBW-104UB USB adapter until instructed to do so.

Note: If the setup menu does not launch automatically, use Windows Explorer to navigate to the appropriate CD-ROM drive and run "Setup"

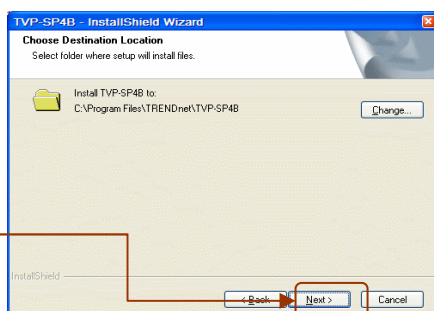
1. Insert the **Utility & Driver CD ROM** into your computer's CD-ROM Drive and then click **Install Driver/Utility**.



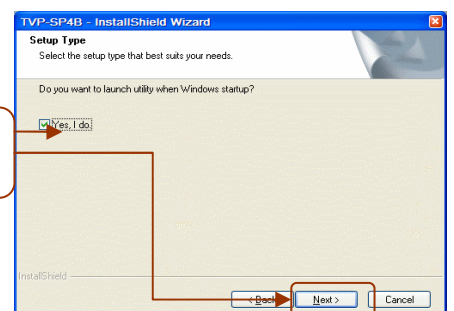
2. Please click **Next**.



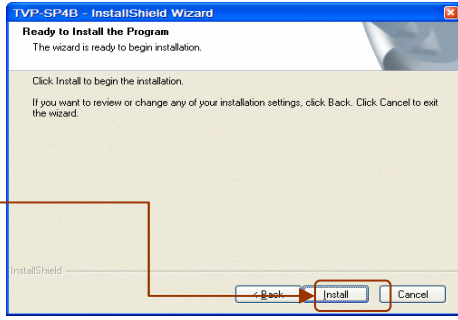
3. Please click **Next**.



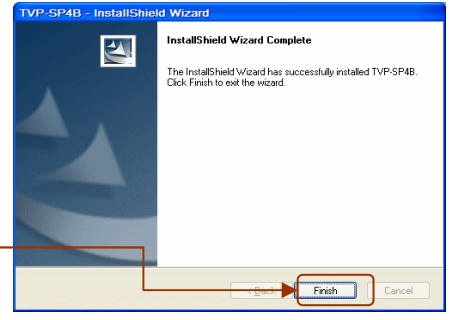
4. When you reach this screen, please select **Yes, I do**. Click **Next**.



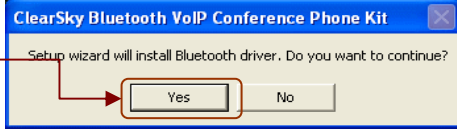
5. Please click **Install**.



6. Please click **Finish**.



7. Please click **Yes** to begin Bluetooth adapter installation.



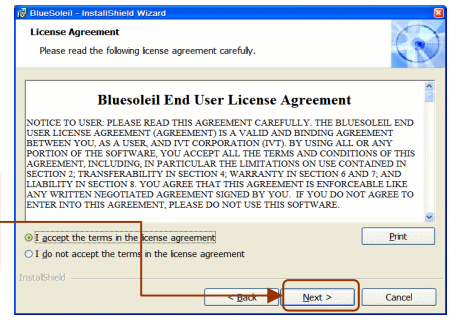
8. Please select **Language** from the drop down menu and then click **OK**.



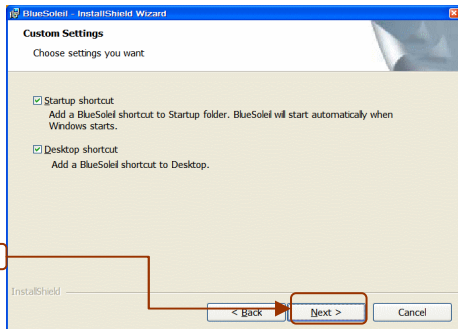
9. Please Click **Next**



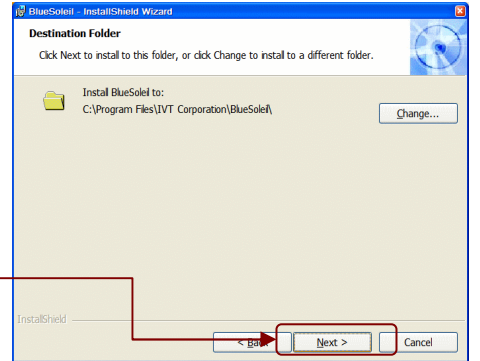
10. Please select **I accept the terms in the license agreement**. Click **Next**



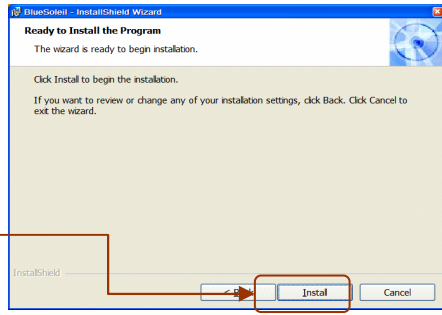
11. Please Click **Next**



12. Please Click **Next**



13. Click **Install**

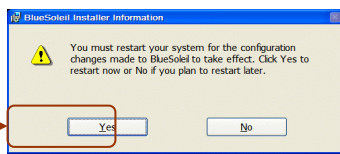


14. Disregard all popup Windows except for the installation Window shown to the right and click **Finish**

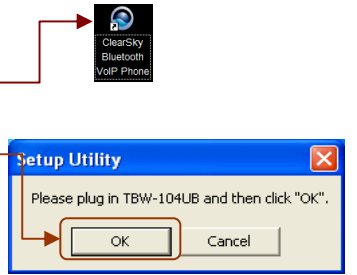


Win2K only

15. Please click **Yes** to restart your computer




16. After the computer restarts (Win2K) or Installation complete (WinXP), the Setup Utility should pop-up, if not double-click the **Clearsky** icon. Plug in USB adapter and click **OK**

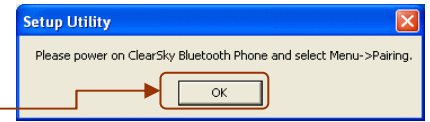


17. Click **Search**.

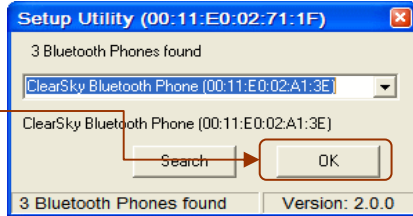
Note: If a window popup to ask you enter PIN code, please enter "0000"



18. Power On The Bluetooth Phone and press the **Menu** button () located below the LCD screen. Select **Pairing** from the menu and then press the **Call** button to enter **Pairing Mode**. Click **OK**



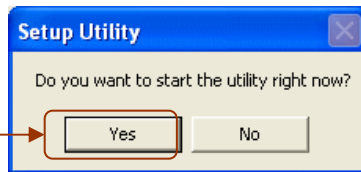
19. Select your Bluetooth Phone (Please check the MAC address to select the right device. Please remove the battery to locate the MAC address label). Click **OK**.



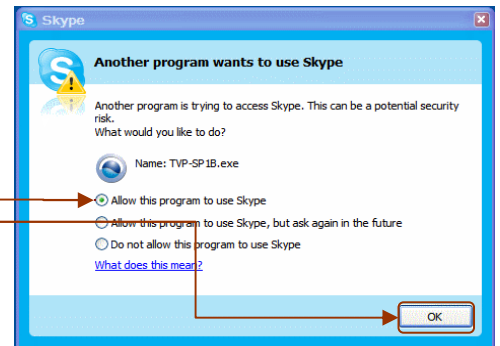
20. To finishing Bluetooth pairing click **OK**.



21. Please click **Yes** to launch the Bluetooth Phone Utility.

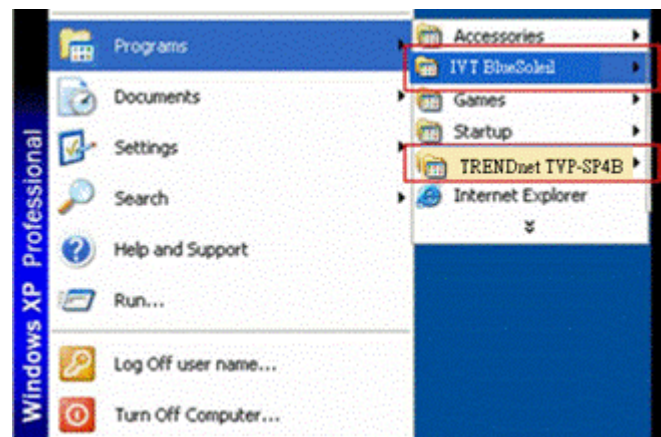


22. Select **Allow the program to use Skype** and then click **OK**.




Applications Installed

After you finish above installations, "IVT BlueSoleil" and "TRENDnet TVP-SP4B" items will be added to Windows Start Menu Programs group.



TRENDnet TVP-SP4B Phone Utility

Phone Utility icon () in system tray can display phone utility version and has some options by right-clicking the icon.

1. Pair BT Phone

This utility help you pair Clearsky Bluetooth Phone with USB bluetooth adapter.



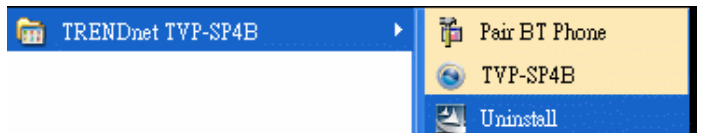
2. TVP-SP4B Utility:

This is the main program which enables you doing skype functions from this Bluetooth phone.



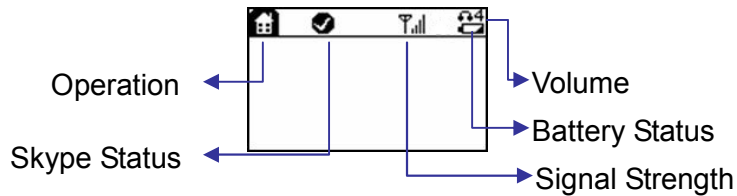
3. Uninstall:

Remove the TVP-SP4B phone utility from your computer.




Exploring the Conference Kit Display

Display Icons



Icons	Description	
Operation	Indicate which operation your phone is doing.	
	Main page	
	Sync Skype contact lists	
	Configuration Menu	
	Incoming or Outgoing calls connected	
	Incoming call ringing	
Skype Status		
	Skype Me	Offline
	Online	Invisible
	Away	Pending
	Do Not Disturb	Skype Out
	Not Available	Block
Signal Strength	Show Bluetooth Signal Strength	
Volume level	Adjust earpiece volume	
Battery Status	Indicate Battery status.	
	This bar goes lower as the battery charge runs low	
	Charging	
	Full charge	


Main page

Press  to go to main page.

4 possible cases on main page:

1. Bluetooth is disconnected: LCD shows “ClearSky”, Signal strength icon is disconnected
2. Bluetooth is connected but skype is not signed in: LCD shows “ClearSky / Skype Unavailable”, Signal strength icon shows levels of signal strength
3. Bluetooth is connected and skype is signed in: LCD shows “ClearSky”
4. Bluetooth is connected, skype is signed in and has missed calls: LCD shows “ClearSky / # Missed calls”.

Contact List Page

Press  can go to Contact List page

- Show Contacts (Displayname > Full Name > Skype Account)
- Sort by Skype status (Online / Offline)
- Sort by name

Quick Access

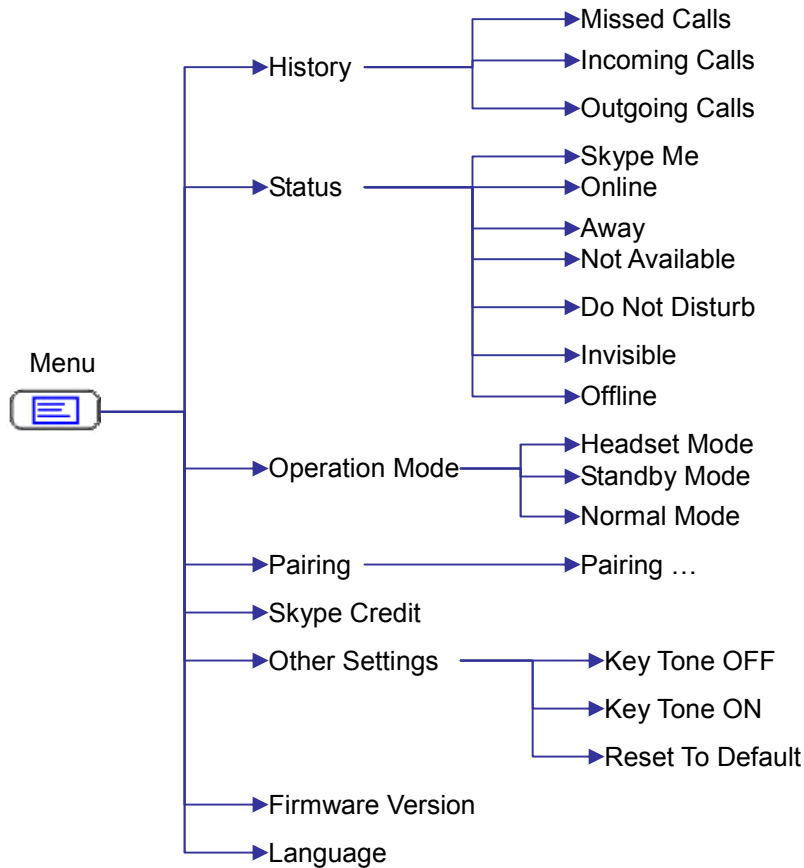
1. Press the first letter of the name. (Press a key once to insert the first letter on the key, twice for the second letter, and so on.)
2. Press ‘1’ to go back to the top of the contact list
3. Press ‘1’ again to go to the last online contact, so you can rolling from bottom to the beginning

Scrolling Long Display Name (long name which cannot be displayed completely on LCD)

1. Press  to move to right.

Configuration Menu

Press  to enter configuration menu








Submenus		Descriptions
History	Missed Calls	Display Missed call lists
	Incoming Calls	Display Incoming call lists
	Outgoing Calls	Display Outgoing call lists
Status		Change my status. Status options: "Skypeme", "Online", "Away", "Not Available", "Do Not Disturb", "Invisible", "Offline"
Operation Mode	Headset Mode	Conference Phone acts as a headset to support audio over MSN Messenger, Yahoo Messenger and more Press On-hook (red button) to return to normal mode
	Standby Mode	If there is no input or active calls in 6 minutes, Conference Phone will enter standby mode for power saving to wait for any incoming call.
	Normal Mode	(default setting) Conference Phone will be powered off automatically when there is no input or active calls in 6 minutes.
Pairing		Let Bluetooth Phone enter Pairing Mode. Device MAC address will be displayed on LCD
Skype Credit		Showing how many skype out credits you have
Other	Key Tone ON	Turn on keypad tone
Settings	Key Tone OFF	Turn off keypad tone

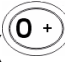


	Reset To Default	
F/W Version		Showing F/W version installed. 1 st MAC address: MAC address of this device 2 nd MAC address: MAC address of Paired USB Adapter
Languages		Select LCD display language

Guide to Basic Functions


Call Skype™ Contact

1. Press  to turn on device → Wait until phone shows “ClearSky” and signal strength icon shows “connected” → press  to sync contact lists with PC skype
2. Use List button  to scroll up/down the contact lists
3. Press  to start a call.
4. Press  to disconnect this call

Call an ordinary phone number (Skype™ out)




1. Enter “+” () + phone number you want to call. (Press  to delete an incorrect digit)
2. Press  to start a call.

Answer a call

1. Press  to answer any incoming call.

Make a Conference Call




A. invite another contact when you are chatting

1. Make 1st call
2. Press  to invite 2nd contact → Press  to place the call
3. Choose “CON CALL”  to invite 2nd contact to join this conference call with 1st contact



1. P2P CALL

4. Choose "P2P CALL" **2. CON CALL** to hold 1st call and talk to 2nd contact.





B. invite contacts and conference them together

1. Press  to go to the contact list menu.
2. Press  to mark the contact you want to include in this conference call. (Conference participants (max 4+host))
3. Press  to start this conference call

Redial outgoing calls


1. Press  to show outgoing call lists.
2. Select the contact (from the outgoing call list) you want to dial to make a call.
3. Press  to make a call

Redial any call from History

1. Redial from Missed Calls: Press  → History → Missed → Choose one contact to dial. (press  to cancel this action and go back to home)
2. Redial from Incoming Calls: Press  → History → Incoming Calls → Choose one contact to dial.
3. Redial from Outgoing Calls: Press  → History → Outgoing Calls → Choose one contact to dial.

Operations during a call

Mute Microphone




- Press  to mute / unmute microphone




Hold a call

- Press  to hold / continue the call

Appendix

Specifications

RF Standard	Class 1 Bluetooth v2.0 with EDR Backward compatible with Bluetooth v1.1 & v1.2
RF Frequency	2.4~2.4835 GHz, ISM band
Spread Spectrum	Frequency Hopping and Adaptive Frequency Hopping
RF Output Power	Up to 17 dBm (maximum)
Display	128 x 80 pixel, graphical type STN LCD with backlight
Interface	<ul style="list-style-type: none"> • Mini-USB connector for charging from computer USB port or external power adapter • Built-in Mono-Speaker / Microphone
LED Indicator	<ol style="list-style-type: none"> 1. Power on x1 (blue): “Flashing” means this device is in standby mode 2. MIC on x 3 (blue) 3. Bluetooth Online x1 (blue) 4. Microphone mute x1 (red)
Battery	3.7V 650 mAh Lithium rechargeable battery pack (built-in)
Power	Charge via USB port
Antenna	One External antenna
Power Consumption	Normal Mode: 30 days Standby Mode: 72+ hrs Talk time: 4+ hrs
+	Volume up
-	Volume down
	Contacts button to Sync Skype contact list
	Menu button <ul style="list-style-type: none"> • Operation Mode (Single user Mode or Meeting Mode) • History • Status: Change Skype status (Skypeme, Online, Away, Not Available, Do Not Disturb, Invisible and Offline) • Pairing • Skype Credit • Headset mode • F/W Version
	On-hook (hang-up), Back to Main page

	Off-hook, Make a call, Answer a call Redial last calls
	Mute Microphone
	Power on / off
Dimension	242 x 242 x 54 mm (9.5 x 9.5 x 2.1 in.)
Environmental Condition	Operating Temperature: 0 ~50° C , Humidity:10 ~ 90% Storage Temperature: -20 ~70° C, Humidity:10 ~ 90%
Certifications	FCC, CE

Note: According to Bluetooth spec, the signal range of Class 1 is 100 meters. 100 meters is the maximum distance that is realistically possible. The environment where the Bluetooth phone kits are been used might have effect on the actual distance that can be attained.

Troubleshooting

Problem: Press “Power on” button, but nothing happen, no display

Solution:

1. Make sure the included rechargeable battery is fitted in the handset correctly.

Problem: Pop up a Bluetooth Security window

Solution:

1. Bluetooth PIN should be self-assigned when pairing with Bluetooth phone. If this window pop up, please input default Bluetooth PIN: “0000”.

Question: How to distinguish standby mode and power-off mode

Answer: Please check LED, if LED is not blinking, Bluetooth phone is in power-off mode. If LED blinks every 5 seconds, Phone is in standby mode.

Problem: No response on your phone (LCD stuck in the same page no matter which key you enter).

Solution: Please remove battery to restart your Bluetooth phone.

Problem: PC music plays in Bluetooth phone

Solution: When you finish installation, system default audio device will be set to Bluetooth wave. If you want to change back to PC original default audio device, please go to Settings→Control Panel→Sounds and Audio Devices→Audio to choose default device.

Problem: Why can I just invite one contact to join my current call?

Solution: If you need to hold a conference call with more than 2 contacts, please choose contacts first and then make a conference call. For “join” function, our phone just allow one participant to join current call.

Problem: Another ringer during my conversation

Solution: This means another incoming call is waiting for your response. You can answer this call and hold current one by pressing “off-hook” or reject this incoming call by pressing “on-hook”

Question: What’s the time period before the phone goes into standby mode?

Answer: 6 minutes

Problem: One warning sound made by Bluetooth phone

Solution: This might be “low battery warning” signal. Please check your battery icon to see when it shows “no”. Please use the included USB cable to charge Bluetooth phone.

Limited Warranty

TRENDware warrants its products against defects in material and workmanship, under normal use and service, for the following lengths of time from the date of purchase.

TVP-SP4BK – 2 Years Warranty

If a product does not operate as warranted above during the applicable warranty period, TRENDware shall, at its option and expense, repair the defective product or part, deliver to customer an equivalent product or part to replace the defective item, or refund to customer the purchase price paid for the defective product. All products that are replaced will become the property of TRENDware. Replacement products may be new or reconditioned.

TRENDware shall not be responsible for any software, firmware, information, or memory data of customer contained in, stored on, or integrated with any products returned to TRENDware pursuant to any warranty.

There are no user serviceable parts inside the product. Do not remove or attempt to service the product by any unauthorized service center. This warranty is voided if (i) the product has been modified or repaired by any unauthorized service center, (ii) the product was subject to accident, abuse, or improper use (iii) the product was subject to conditions more severe than those specified in the manual.

Warranty service may be obtained by contacting TRENDware office within the applicable warranty period for a Return Material Authorization (RMA) number, accompanied by a copy of the dated proof of the purchase. Products returned to TRENDware must be pre-authorized by TRENDware with RMA number marked on the outside of the package, and sent prepaid, insured and packaged appropriately for safe shipment.

WARRANTIES EXCLUSIVE: IF THE TRENDWARE PRODUCT DOES NOT OPERATE AS WARRANTED ABOVE, THE CUSTOMER'S SOLE REMEDY SHALL BE, AT TRENDWARE'S OPTION, REPAIR OR REPLACEMENT. THE FOREGOING WARRANTIES AND REMEDIES ARE EXCLUSIVE AND ARE IN LIEU OF ALL OTHER WARRANTIES, EXPRESSED OR IMPLIED, EITHER IN FACT OR BY OPERATION OF LAW, STATUTORY OR OTHERWISE, INCLUDING WARRANTIES OF MERCHANTABILITY AND FITNESS FOR A PARTICULAR PURPOSE. TRENDWARE NEITHER ASSUMES NOR AUTHORIZES ANY OTHER PERSON TO ASSUME FOR IT ANY OTHER LIABILITY IN CONNECTION WITH THE SALE, INSTALLATION MAINTENANCE OR USE OF TRENDWARE'S PRODUCTS.

TRENDWARE SHALL NOT BE LIABLE UNDER THIS WARRANTY IF ITS TESTING AND EXAMINATION DISCLOSE THAT THE ALLEGED DEFECT IN THE PRODUCT DOES NOT EXIST OR WAS CAUSED BY CUSTOMER'S OR ANY THIRD PERSON'S MISUSE, NEGLIGENCE, IMPROPER INSTALLATION OR TESTING, UNAUTHORIZED ATTEMPTS TO REPAIR OR MODIFY, OR ANY OTHER CAUSE BEYOND THE RANGE OF THE INTENDED USE, OR BY ACCIDENT, FIRE, LIGHTNING, OR OTHER HAZARD.

LIMITATION OF LIABILITY: TO THE FULL EXTENT ALLOWED BY LAW TRENDWARE ALSO EXCLUDES FOR ITSELF AND ITS SUPPLIERS ANY LIABILITY, WHETHER BASED IN CONTRACT OR TORT (INCLUDING NEGLIGENCE), FOR INCIDENTAL, CONSEQUENTIAL, INDIRECT, SPECIAL, OR PUNITIVE DAMAGES OF ANY KIND, OR FOR LOSS OF REVENUE OR PROFITS, LOSS OF BUSINESS, LOSS OF INFORMATION OR DATA, OR OTHER FINANCIAL LOSS ARISING OUT OF OR IN CONNECTION WITH THE SALE, INSTALLATION, MAINTENANCE, USE, PERFORMANCE, FAILURE, OR INTERRUPTION OF THE POSSIBILITY OF SUCH DAMAGES, AND LIMITS ITS LIABILITY TO REPAIR, REPLACEMENT, OR REFUND OF THE PURCHASE PRICE PAID, AT TRENDWARE'S OPTION. THIS DISCLAIMER OF LIABILITY FOR DAMAGES WILL NOT BE AFFECTED IF ANY REMEDY PROVIDED HEREIN SHALL FAIL OF ITS ESSENTIAL PURPOSE.

Governing Law: This Limited Warranty shall be governed by the laws of the state of California.

AC/DC Power Adapter, Cooling Fan, and Power Supply carry 1 Year Warranty



TRENDnet[®]

TRENDnet Technical Support

US • Canada

Toll Free Telephone: 1(866) 845-3673

24/7 Tech Support



Europe (Germany • France • Italy • Spain • Switzerland • UK)

Toll Free Telephone: +00800 60 76 76 67

English/Espanol - 24/7

Francais/Deutsch - 11am-8pm, Monday - Friday MET

Worldwide

Telephone: +(31) (0) 20 504 05 35

English/Espanol - 24/7

Francais/Deutsch - 11am-8pm, Monday - Friday MET

Product Warranty Registration

Please take a moment to register your product online.

Go to TRENDnet's website at <http://www.trendnet.com>

TRENDnet

20675 Manhattan Place
Torrance, CA 90501
USA