

## SecurView Cameras Firmware Upgrade Procedures

### Warning:

- Always upgrade firmware with a wired connection.
- Do not interrupt the connection while doing the firmware upgrading
- Save your configuration before firmware upgrade

### Note:

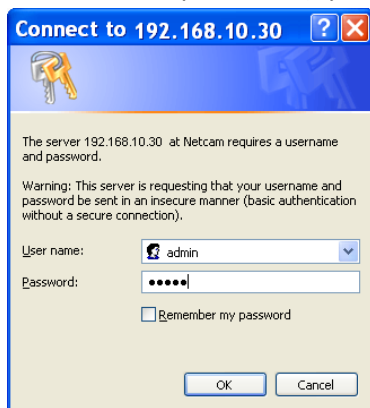
- 1) TV-IP410WN is used for below procedures, other SecurView cameras follow the similar route.
- 2) It is necessary to perform a factory reset after the firmware upgrade. If you would like to keep your original setting, please back up your configuration first before upgrading the firmware. Please see "How to Back Up" & "How to Restore" in page 5 and page 7.

## Firmware Upgrade

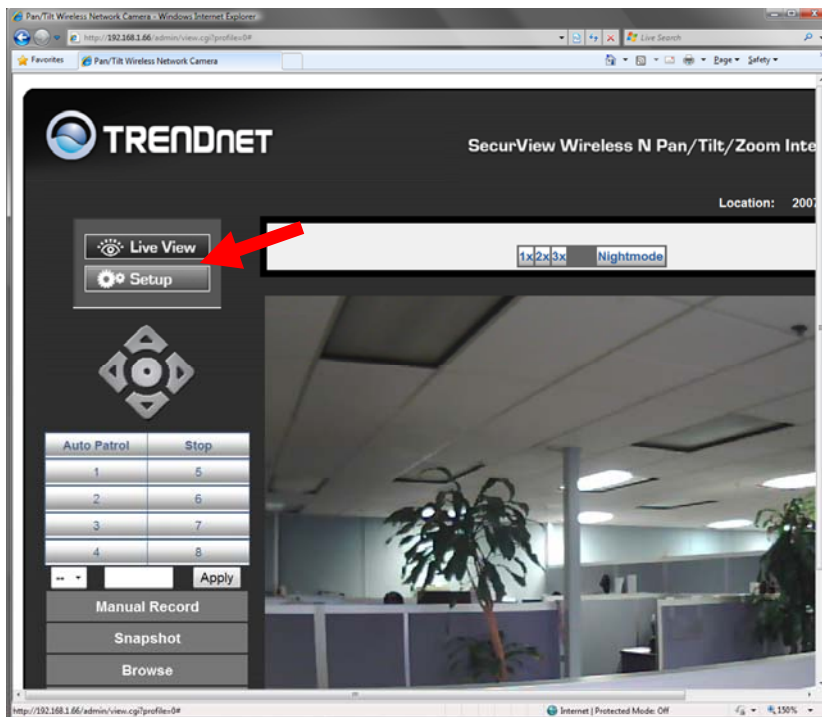
1. Download and unzip the firmware file from [www.trendnet.com](http://www.trendnet.com). Save the firmware on your computer. The firmware file name ends with \*.pck.
2. Open a browser and go to your camera's IP address (default is 192.168.10.30 if you do not have a DHCP server)



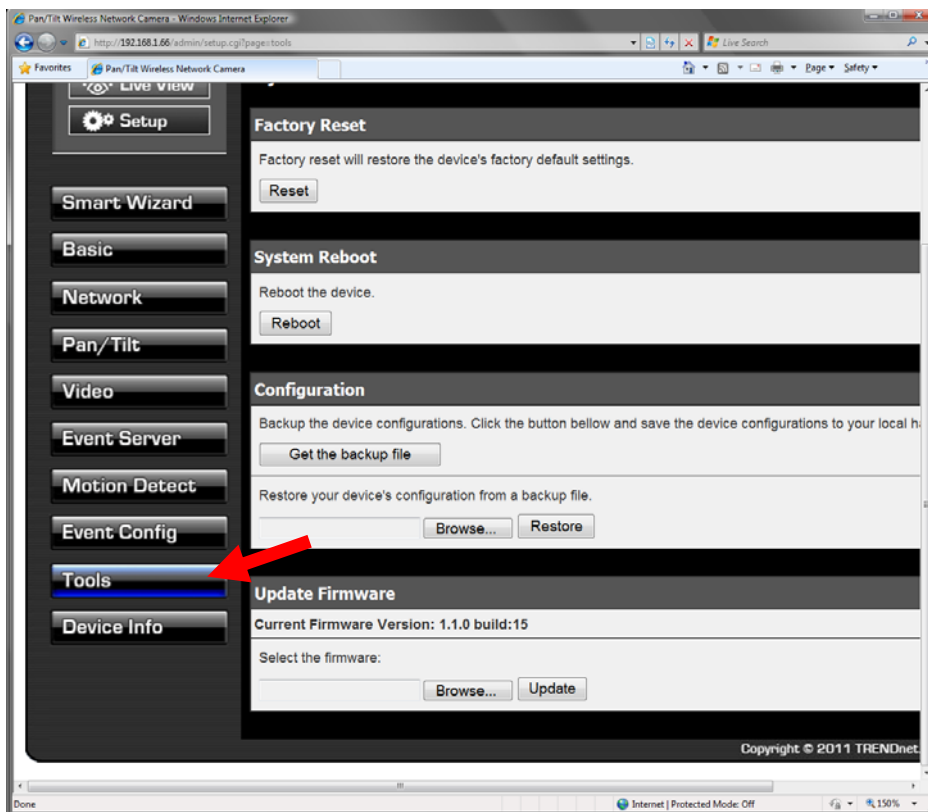
3. Enter the username & password (By default, the username & password is admin/admin)



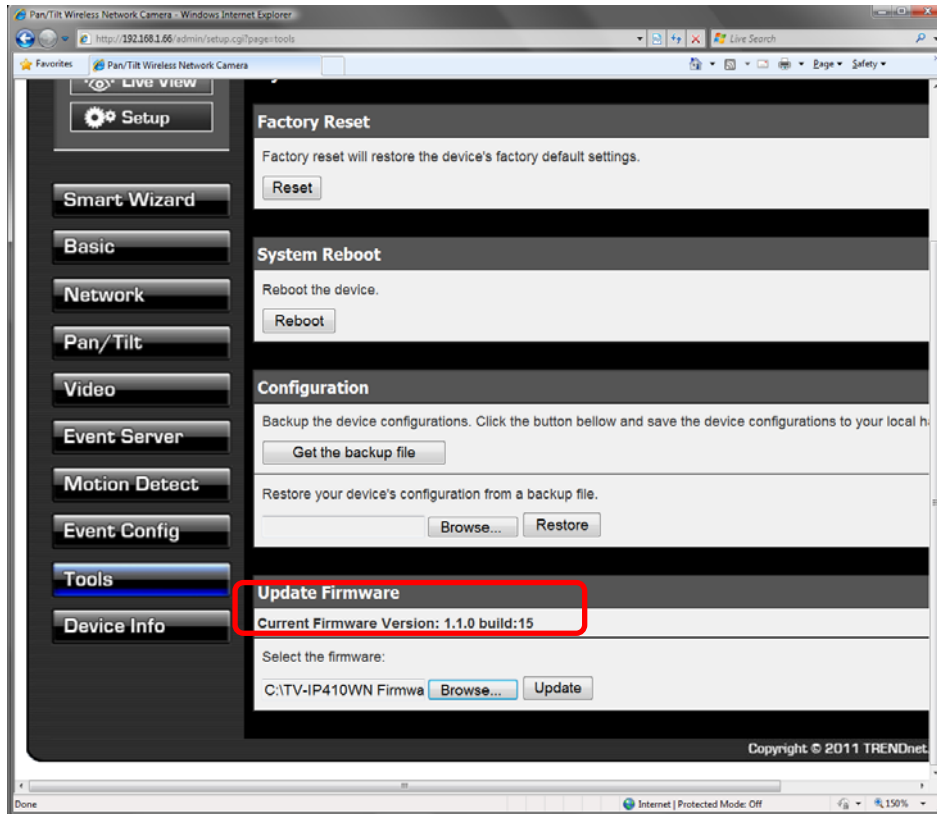
4. Click on **Setup**



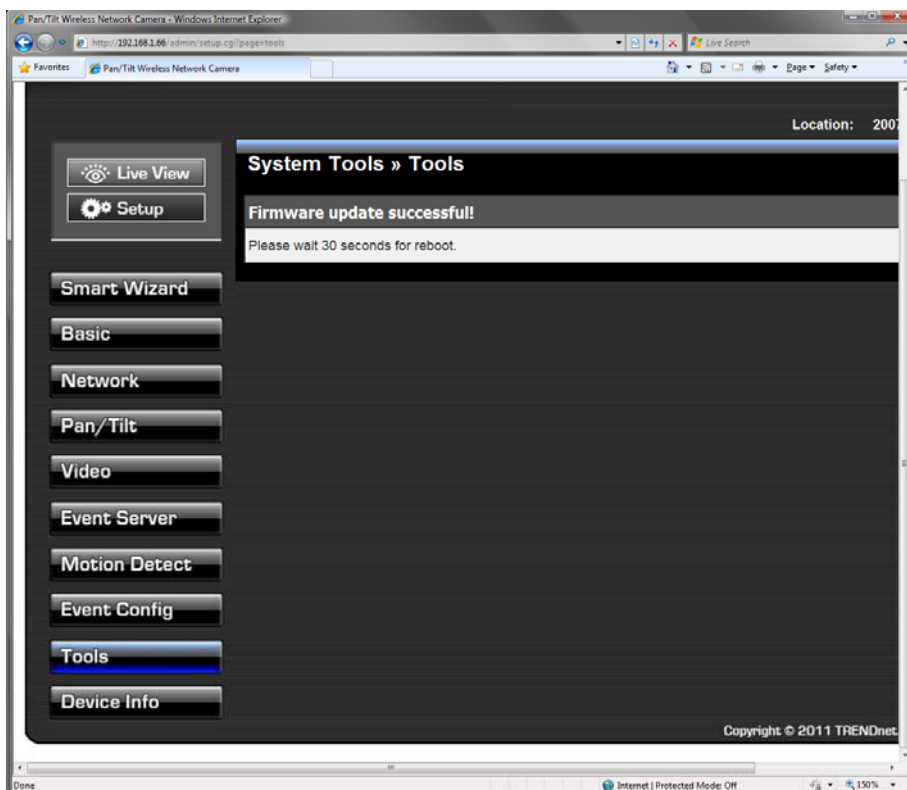
5. Click on **Tools**



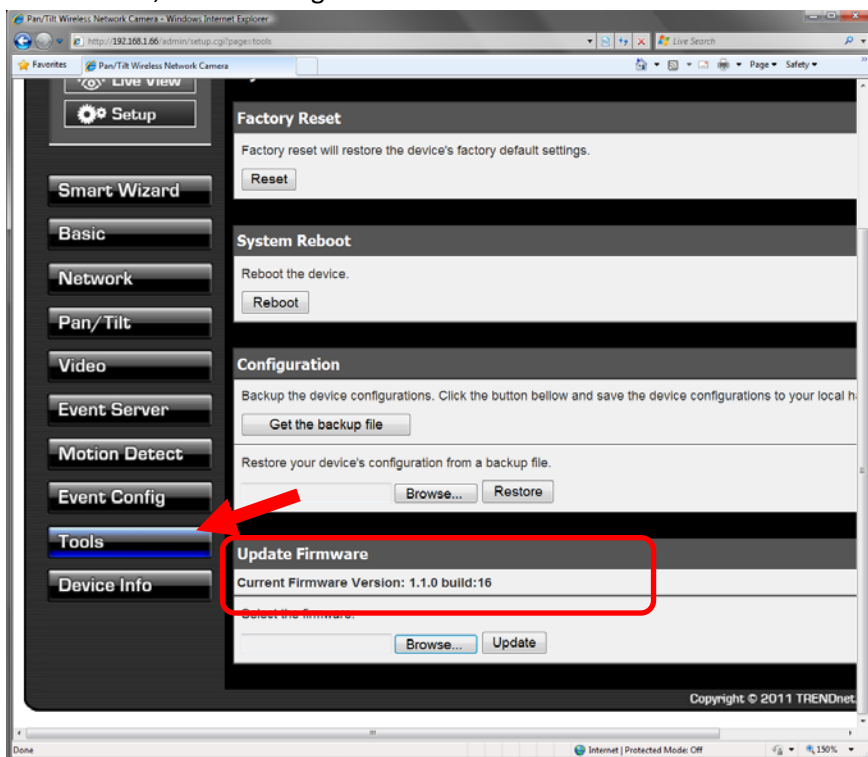
6. Check the firmware version, Click **Browse** to select the new firmware file then click **Upgrade**.



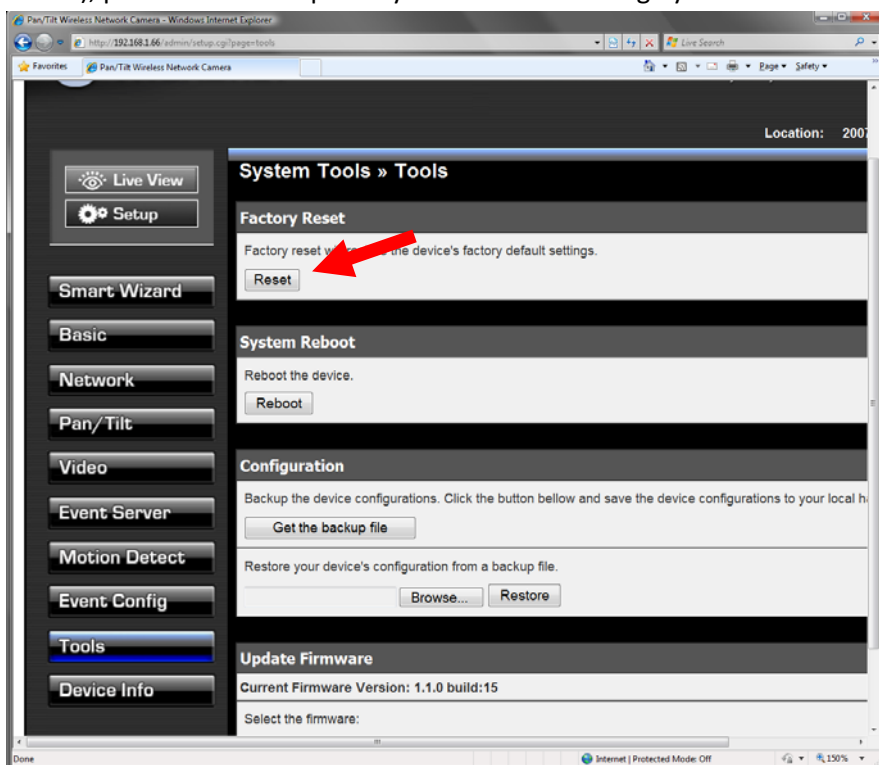
7. Wait 30 seconds for the device to reboot.



8. After reboot, click **Tools** again to check the new firmware version.

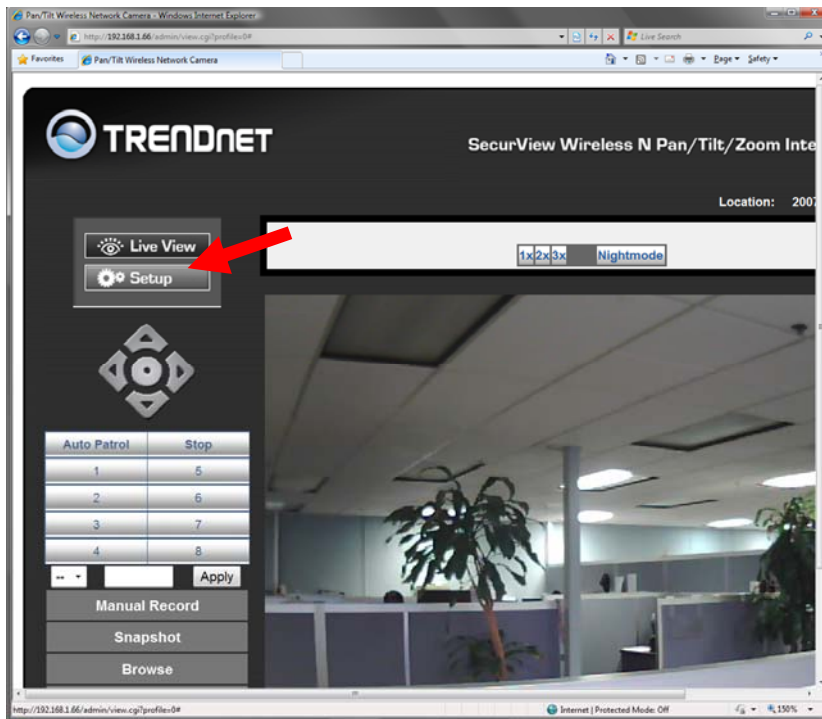


9. Click on **Reset**, your firmware upgrade is now completed. To find the camera IP (if you have a DHCP server), please use IPSetup Utility to search and change your camera's IP address)

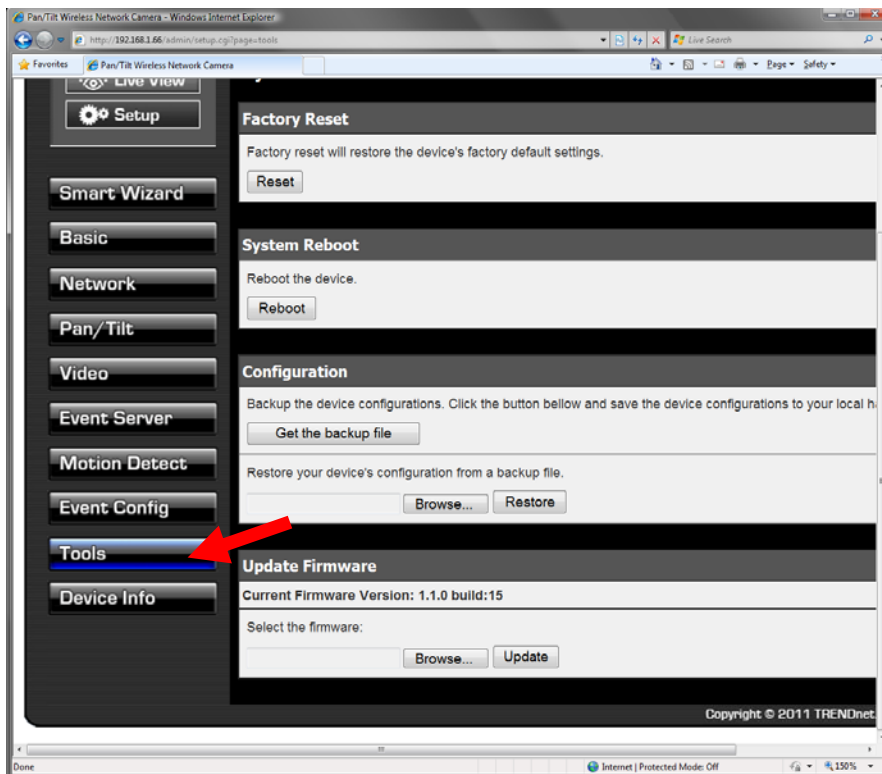


## How to Back Up the configuration file

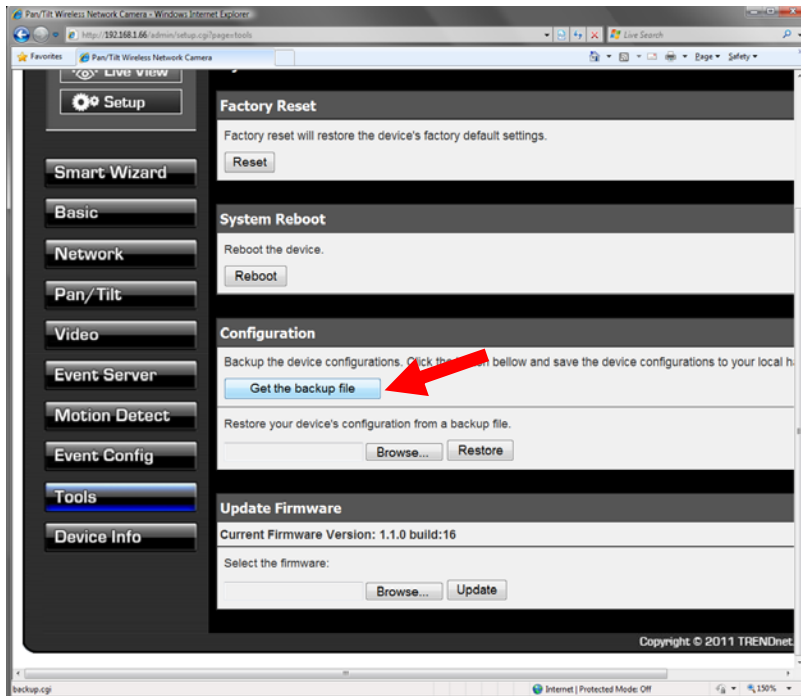
1. Click on **Setup**



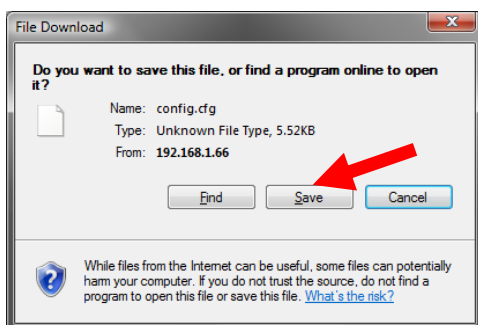
2. Click on **Tools**



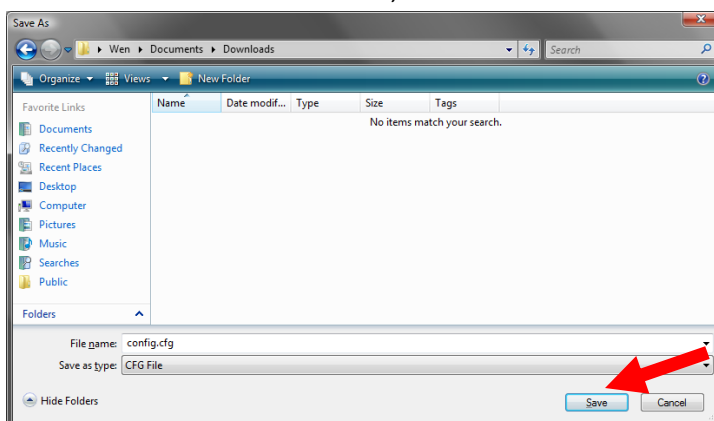
3. Click on **Get the backup file**



4. Click on **Save**



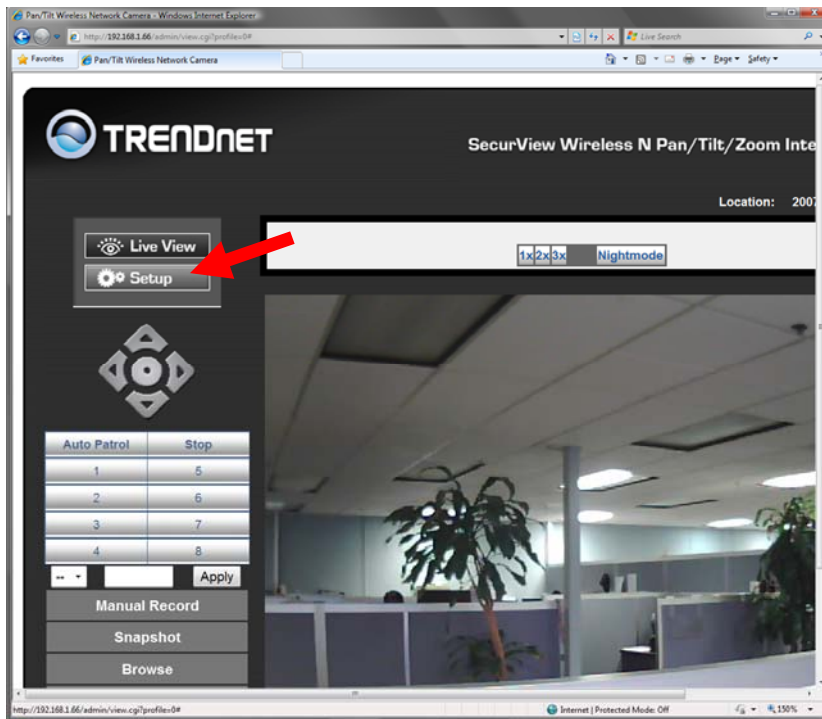
5. Browse to the destination folder, then click **Save**.



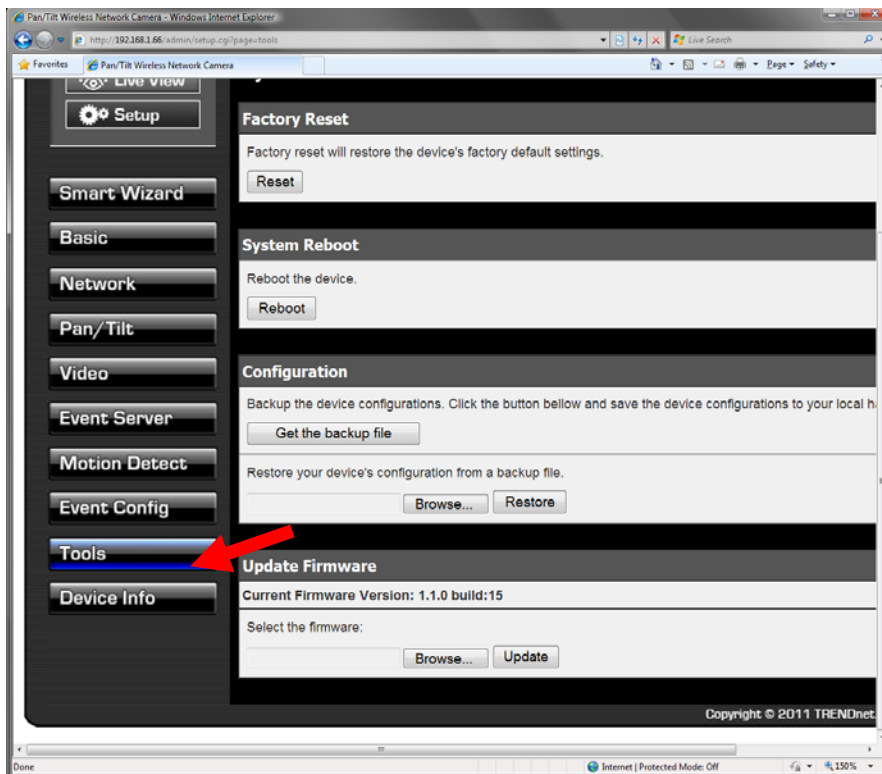
6. Your configuration is now successfully backed up.

## How to Restore your back up file

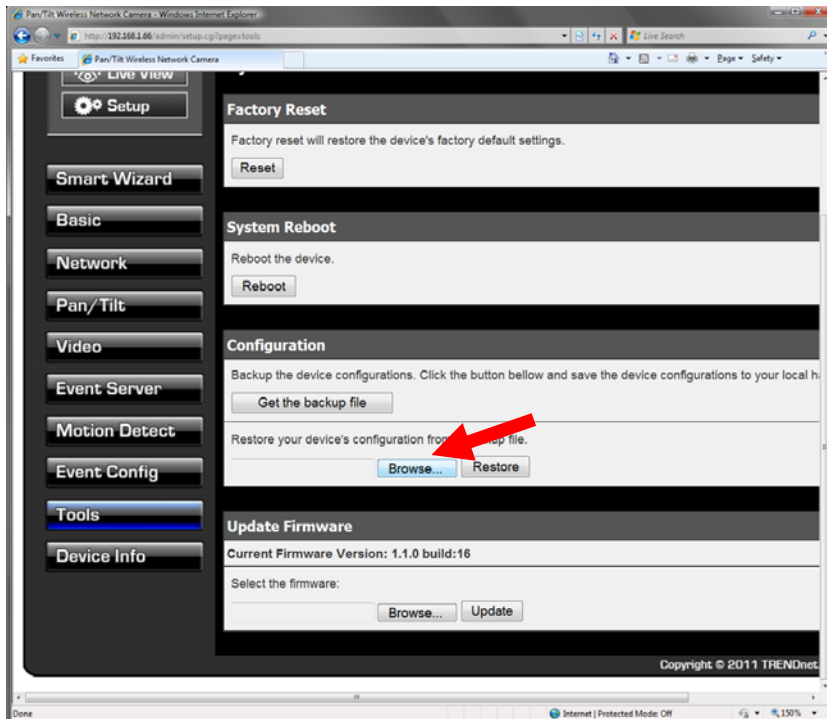
### 1. Click on **Setup**



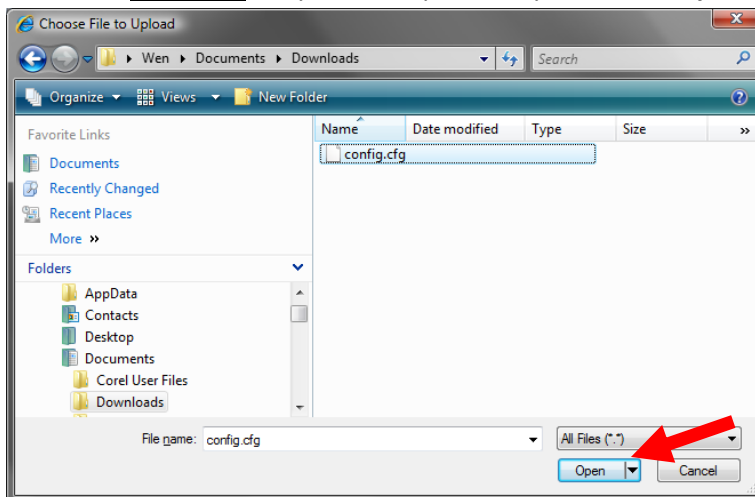
### 2. Click **Tools**



3. In **Configuration** section, Click on **Browse**

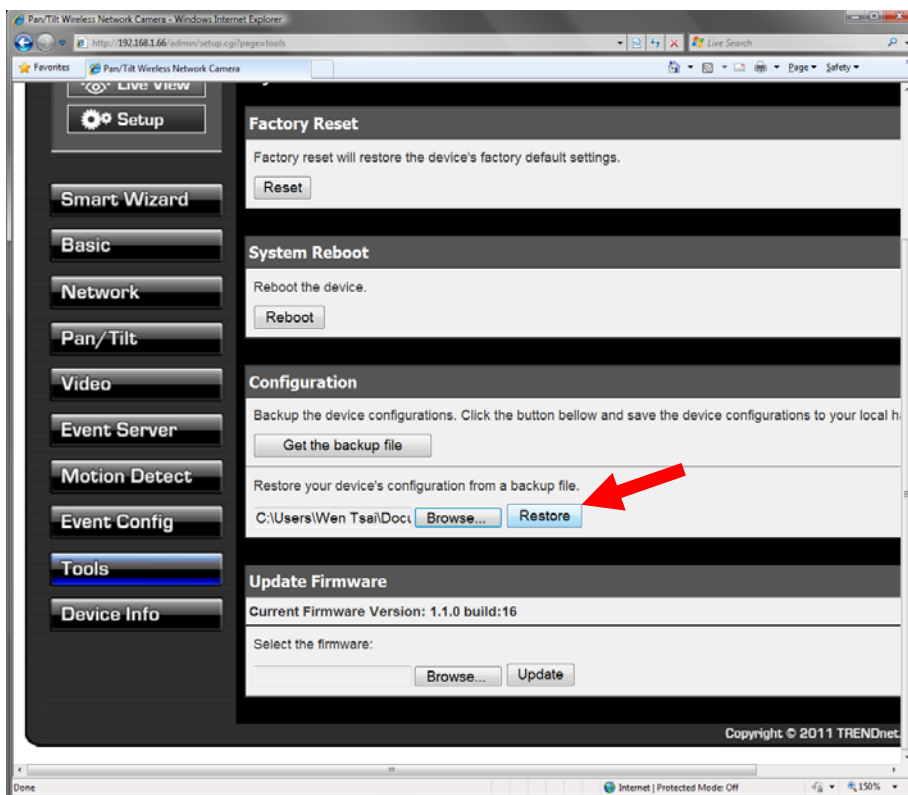


4. Select the config.cfg file you saved previously, then click **Open**





- Click on **Restore**



- Wait 30 seconds for the device to reboot.
- After reboot, verify your setting. Restoration is now complete.

