

## TV-IP551W / TV-IP551WI / TV-IP651W / TV-IP651WI

### Camera Firmware Upgrade Procedures

#### **Warning:**

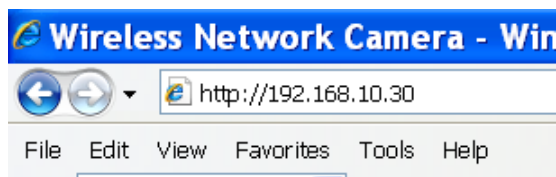
- Always upgrade firmware with a wired connection.
- Do not interrupt the connection while doing the firmware upgrading
- Save your configuration before firmware upgrade

#### **Note:**

- 1) TV-IP551WI is used for below procedures; other cameras follow the similar route.
- 2) It is necessary to perform a factory reset after the firmware upgrade. If you would like to keep your original setting, please back up your configuration first prior to upgrade the firmware as instructed at the last page.

### **Firmware Upgrade**

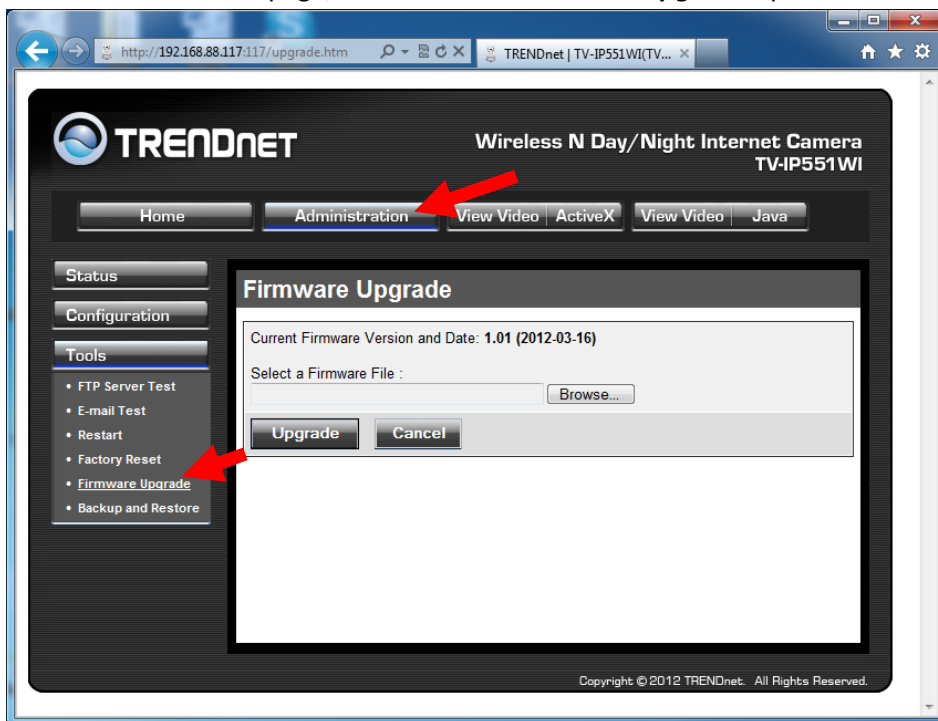
1. Download and unzip the firmware file from [www.trendnet.com/downloads](http://www.trendnet.com/downloads) . Save the firmware on your computer. The firmware file name ends with \*.bin.
2. Open a browser and go to your camera's IP address (default is 192.168.10.30 if you do not have a DHCP server)



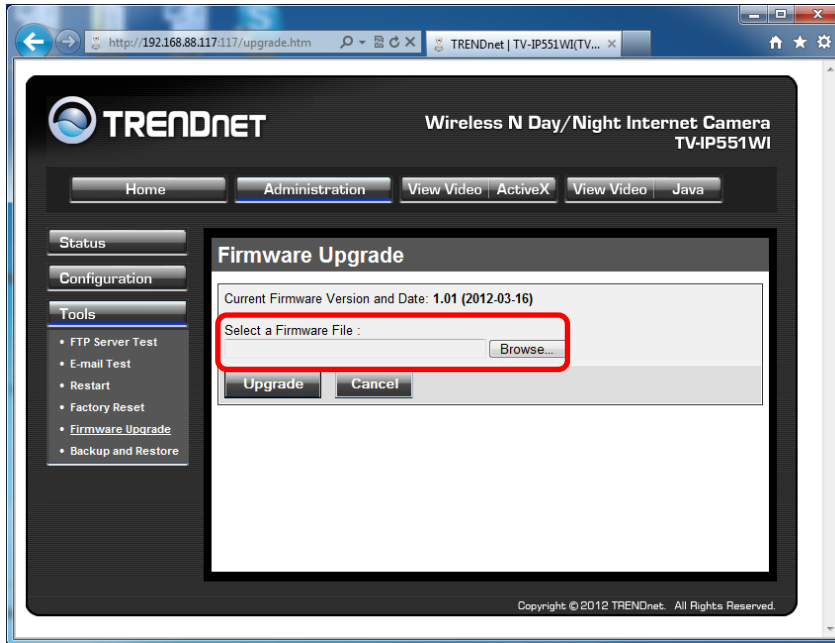
3. Enter the username & password (By default, the username & password is admin/admin)



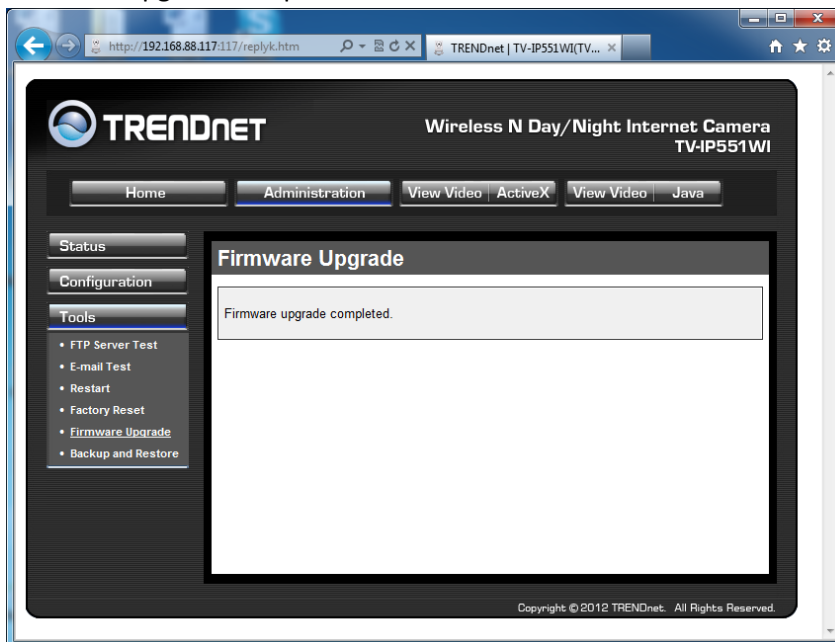
4. Go to **Administration** page, **Tools** tab then **Firmware Upgrade** option



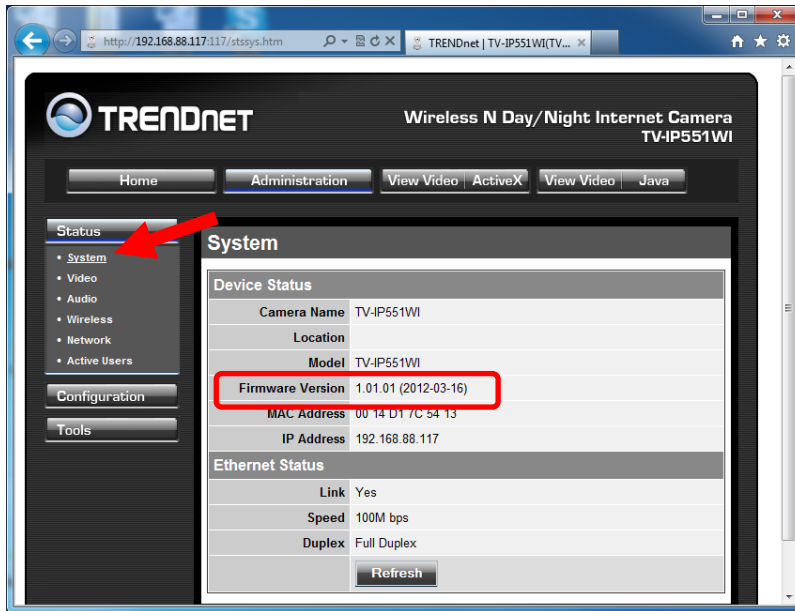
5. Click **Browse** to select the new firmware file then click **Upgrade**.



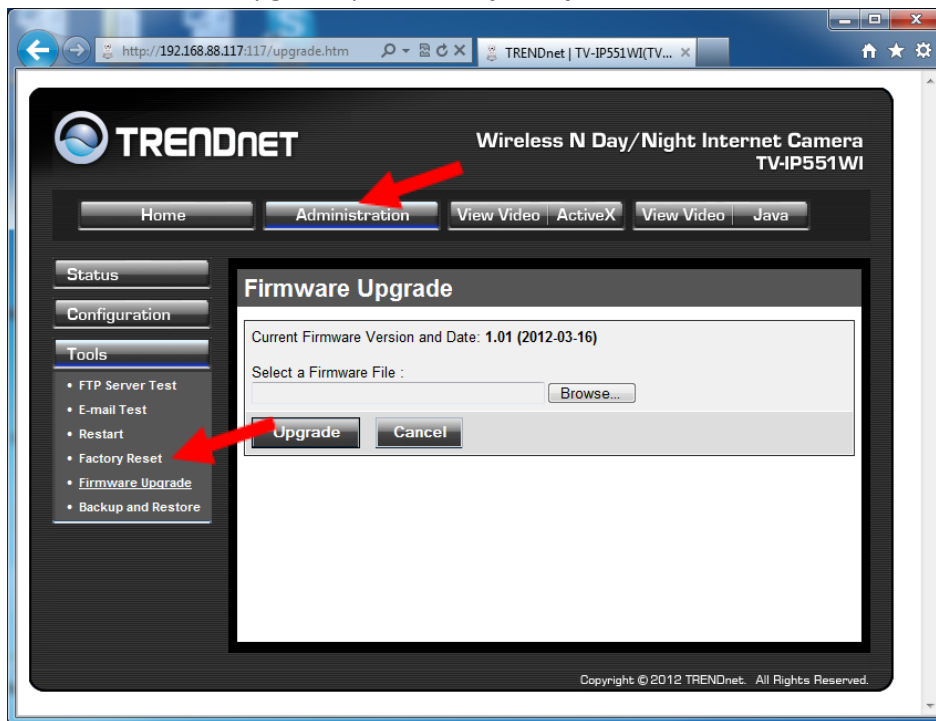
6. Firmware upgrade complete.



7. After reboot, click **Status/System** tab again to check the new firmware version.



8. After firmware upgrade, please click **factory reset**



9. Your firmware upgrade is now completed. To find the camera IP, please use the Setup Wizard (can be found on the CD-ROM) to search and configure your camera again)

## 10. **Back up**

To keep your original settings prior to the firmware upgrade, please **back up** the config.cfg file and save the file to your chosen folder.

### **Restore**

After the firmware upgrade completed, then **Restore** the config.cfg file and your original settings will be restored.

