



Quick Installation Guide



TV-IP600
TV-IP600W
H/W: V1

Table of Contents

English	1
1. Before You Start	1
2. Hardware Installation and Configuration	3
Troubleshooting	9

1. Before You Start



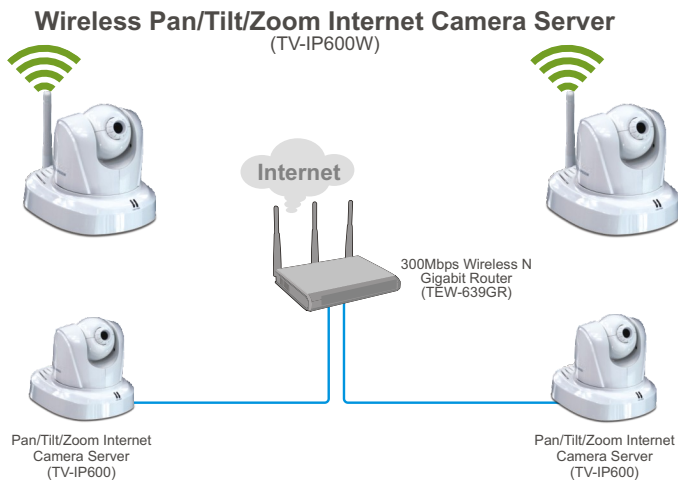
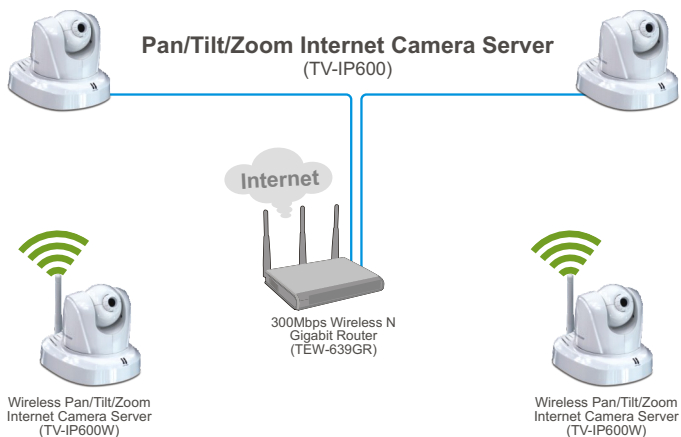
Package Contents

- TV-IP600/TV-IP600W
- Utility CD-ROM
- Multi-Language Quick Installation Guide
- 1 x 2dbi Detachable Antenna
- RJ-45 Cable
- Mounting Kit
- AC Power Adapter (5V, 2.5A)

System Requirements

- 10/100Mbps Ethernet Adapter
- CD-ROM Drive
- CPU: 2GHz processor or above
- Memory: 256MB RAM or above / 512MB RAM or above (Windows Vista)
- VGA Resolution: 800 x 600 or above
- Web Browser: Internet Explorer (6.0 or higher)
- Wireless router or access point (TV-IP600W)
- An available DHCP Server –routers usually have a built-in DHCP server.

Application



2. Hardware Installation and Configuration

Note:

1. It is recommended that you configure the IP Camera from a wired computer.
2. If you would like to use IPViewPro 2.0 software, please install the software by clicking the Install **IPView Pro 2.0** in the Autorun window and refer to the User's Guide on the CD for more information.

1. Insert the Utility CD-ROM into your CD-ROM drive.

2. Click **Run autorun.exe**
(Windows Vista only)



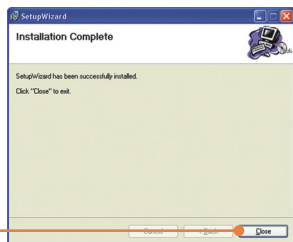
3. Click **Setup Winzard.**



4. Click **Next**. Then follow the **Setup Wizard** instructions.



5. Click **Close**.



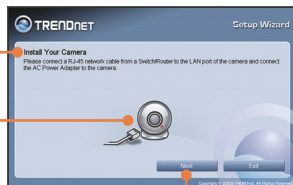
6. Double click on the **SetupWizard** icon on your desktop.



7. Attach the antennas to the IP camera.



8. Connect a RJ-45 network cable from a Switch/Router to the **Ethernet** port on the IP Camera.



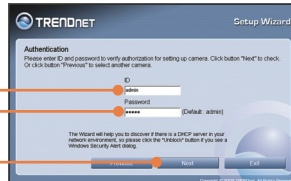
9. Connect the AC Power Adapter to the IP Camera and then to a power outlet.

10. Click **Next**.

11. Select the IP camera and click **Next**.



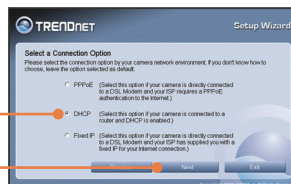
12. Enter your ID and password. Then click **Next**. By default:
ID: admin
Password: admin



13. If you would like to change the administrator password, click **Change Password**, enter a new password, retype the new password and then click **Next**. Leave **Change Password** unchecked if you do not wish to change the password.
Note: Password is limited to up to 8 characters.

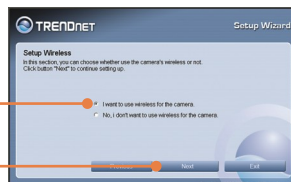


14. Select **DHCP** and then click **Next**.



Note: If you have the TV-IP600, please skip to step 18. If you have the TV-IP600W, continue on to step 15.

15. Click **I want to use wireless for the camera** and then click **Next**.



16. Click **Manually Setup Wireless** and then click **Next**.



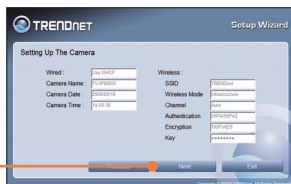
17. Select your wireless network from the **Available AP** dropdown list. If your wireless network does not appear, manually enter the **SSID** of your wireless network. If you have Encryption enabled, select the **Authentication**, select the **Encryption** and enter your **Key**. Then click **Next**.



18. Configure the **Camera Name** and **Camera Time**. Click **Copy Local Time** to automatically configure the Camera Time to match your computer. Then click **Next**.



19. Click **Next**.



20. Please wait while the settings on your cameras are being saved.



21. Disconnect the RJ-45 cable and unplug the power. Then plug the power back in. Wait about 30 seconds while the IP Camera reboots. Then verify the PWR and LNK LEDs are on.

Note: The TV-IP600W will not work wirelessly until you disconnect the Ethernet cable from the back of the camera.

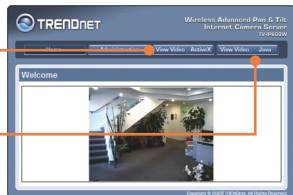
22. Click on the following URL or click **Link** to open up the browser configuration.



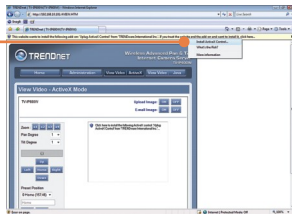
23. Enter the User name and Password, and then click **OK**. By default:
User Name: **admin**
Password: **admin**



24. Click **View Video | ActiveX** or **View Video | Java** to view live video.



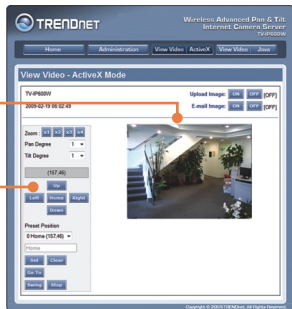
25. Right click on the yellow bar and select **Install ActiveX Control** (ActiveX only).



26. Click **Install** (ActiveX only).



27. Live Video will now appear.



28. Use the command icons to control the camera.

Your installation is now complete.

Note: For detailed information regarding the **TV-IP600/TV-IP600W** configuration and advanced settings, please refer to the Troubleshooting section, User's Guide on the Utility CD-ROM, or TRENDnet's website at <http://www.trendnet.com>.

Register Your Product

To ensure the highest level of customer service and support, please take a moment to register your product Online at: www.trendnet.com/register
Thank you for choosing TRENDnet

Q1: SetupWizard is unable to detect my camera. What should I do?

A1: First, verify that you have followed all the steps in the Section 2: Hardware Installation and Configuration. Second, disable any software firewall programs such as ZoneAlarm or Norton Internet Security. If you are using Windows XP or Windows Vista, disable the built in firewall. Third, click on Re-Scan in the SetupWizard.

Q2: I do not have a DHCP server or DHCP is disabled on my network and I am unable to configure the TV-IP600/TV-IP600W. What should I do?

A2: First, go to the TCP/IP settings on your computer and assign a static IP address on your computer's network adapter in the subnet of 192.168.10.x. Since the default IP address of the TV-IP600/TV-IP600W is 192.168.10.30, do not assign a static IP address of 192.168.10.30 on your computer's network adapter. Second, open Internet Explorer and enter <http://192.168.10.30> into the address bar.

Q3: The Image is blurry. How can I adjust the focus on the IP Camera?

A3: You can adjust the IP Camera's focus by rotating the lens.

Q4: Live video does not appear when I click on Live View. What should I do?

A4: First, make sure that you are using a browser that supports ActiveX or Java. Second, when viewing in ActiveX mode, make sure that you added ActiveX control. See steps 25 to 26 in Section 2: **Hardware Installation and Configuration**. Third, when viewing in Java mode, make sure that you have the latest version of Java installed. Please go to <http://www.java.com> to download the latest version of Java.

Q5: How do I connect the TV-IP600/TV-IP600W to my wireless router or access point?

A5: Make sure that you configure the camera to have the same SSID, encryption mode and key (if enabled). Follow the instructions in section 2: **Hardware Installation and Configuration** to configure the camera with the SSID and encryption key

Q6: After I successfully configured the TV-IP600/TV-IP600W to match my wireless network settings, I can not connect to the camera.

A6: First, verify that the wireless settings match your wireless network settings. Second, make sure to disconnect the Ethernet cable from the camera and verify that the **LINK** LED is blinking red.

Q7: I forgot my password. What should I do?

A7: Take a pin or paperclip and press the reset button on the back of the unit for 15 seconds. This will return settings back to factory defaults. Open up the SetupWizard program to find out the IP address of the camera (see step 11 in Section 2: **Hardware Installation and Configuration**). If you do not have a DHCP server on your network, the default IP address is 192.168.10.30. The default administrator ID and password is admin.

If you still encounter problems or have any questions regarding the **TV-IP600/TV-IP600W**, please contact TRENDnet's Technical Support Department.

Certifications

This equipment has been tested and found to comply with FCC and CE Rules.

Operation is subject to the following two conditions:

- (1) This device may not cause harmful interference.
- (2) This device must accept any interference received. Including interference that may cause undesired operation.



Waste electrical and electronic products must not be disposed of with household waste. Please recycle where facilities exist. Check with you Local Authority or Retailer for recycling advice.



NOTE: THE MANUFACTURER IS NOT RESPONSIBLE FOR ANY RADIO OR TV INTERFERENCE CAUSED BY UNAUTHORIZED MODIFICATIONS TO THIS EQUIPMENT. SUCH MODIFICATIONS COULD VOID THE USER'S AUTHORITY TO OPERATE THE EQUIPMENT.

ADVERTENCIA

En todos nuestros equipos se mencionan claramente las características del adaptador de alimentación necesario para su funcionamiento. El uso de un adaptador distinto al mencionado puede producir daños físicos y/o daños al equipo conectado. El adaptador de alimentación debe operar con voltaje y frecuencia de la energía eléctrica domiciliar existente en el país o zona de instalación.



TRENDnet®

Product Warranty Registration

Please take a moment to register your product online.
Go to TRENDnet's website at <http://www.trendnet.com/register>

TRENDnet®

20675 Manhattan Place
Torrance, CA 90501
USA