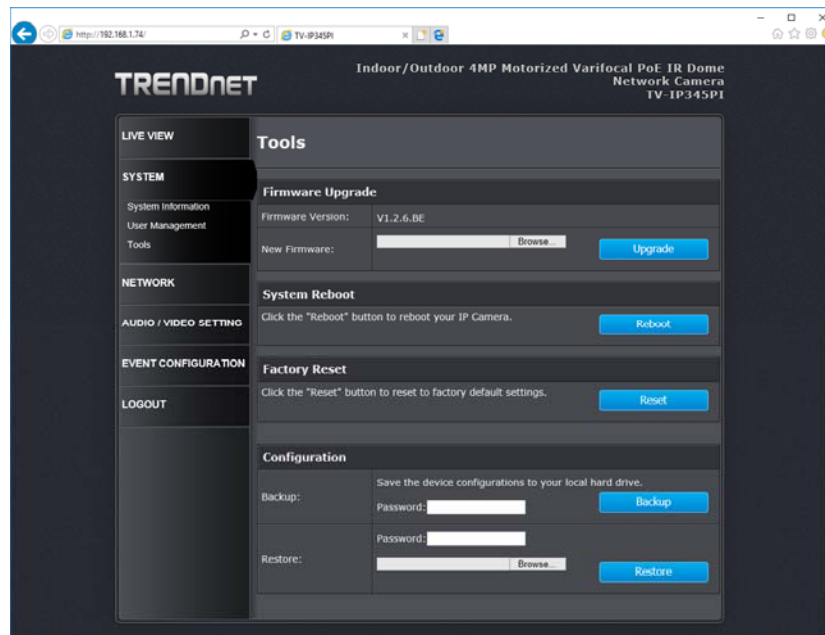


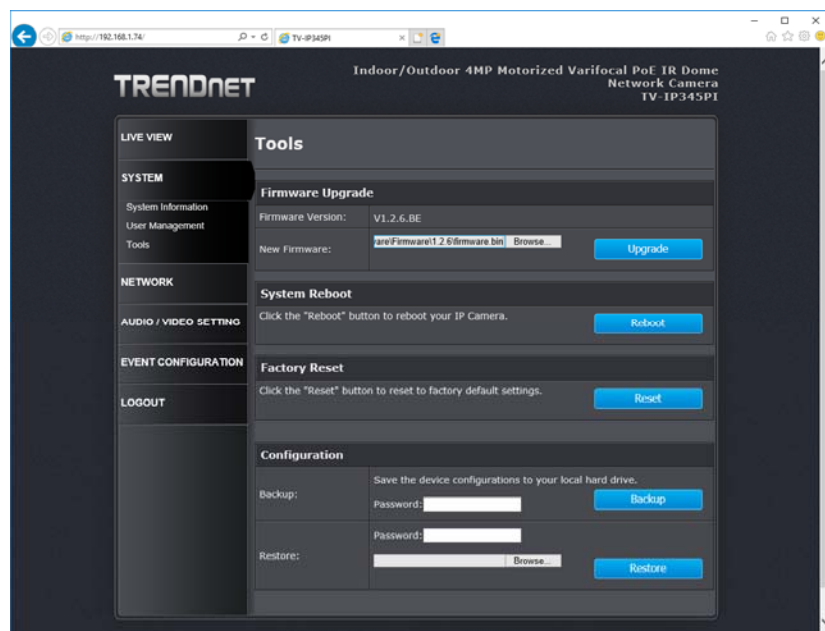
## Firmware Upload Instructions

TV-IP344PI / TV-IP345PI

1. Save the unzipped firmware file to desktop. Save your current configurations on the camera if necessary.
2. Login to your camera and go to Setup → System → Tools section



3. Browse to the unzipped firmware file and click on Upgrade



4. It will take couple of minutes to load the firmware, do not close the browser while upgrading.
5. When the firmware upgrade is completed, reload the browser to view your camera again.