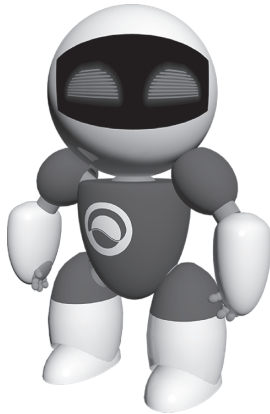


TRENDnet[®]



TRENDnetVIEW Pro

- TRENDnetVIEW Pro Quick Installation Guide (1)

Table of Contents

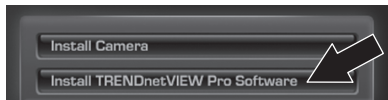
| | |
|---|---|
| TRENDnetVIEW Pro Management Software Requirements | 1 |
| TRENDnetVIEW Pro Installation | 2 |
| Add Cameras | 3 |
| Schedule Continuous and Motion Detection Recordings | 4 |
| Archive Video Playback | 6 |

TRENDnetVIEW Pro Management Software Requirements

| Поддерживаемые ОС | 1-8 камер | | 9-32 камер | |
|---|-----------|----------------------|------------|----------------------|
| | ЦП | Память | ЦП | Память |
| Windows 8.1 (32/64-bit) / Windows 8 (32/64-bit) / Windows 7 (32/64-bit) / Windows Vista (32/64-bit) / Windows XP (32/64-bit) / Windows Server 2012 (32/64-bit) / Windows Server 2008 (32/64-bit) / Windows Server 2003 (32/64-bit) | 2ГГц | 2Гб ОЗУ или более | 2ГГц | 4Гб ОЗУ или более |

TRENDnetVIEW Pro Installation

1. Insert the Utility CD-ROM into your CD-ROM drive.
2. Click **Install TRENDnetVIEW Pro Software**.

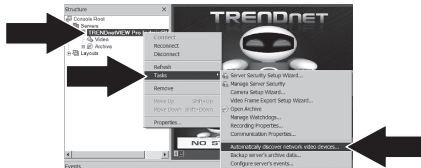


3. Select your language and then click **OK**.
4. Click next for all steps and then click **Finish**.
5. The server setup wizard will automatically run. Click next for all steps and then click **Finish**.
6. Double click the TRENDnetVIEW Pro icon on your desktop to open up the program.

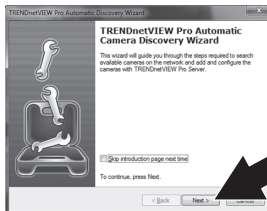


Add Cameras

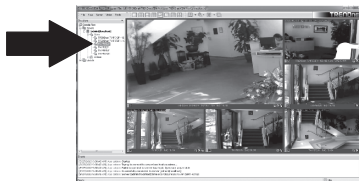
1. Right click on the server in the structure pane as shown in the screen below.
2. Select **Tasks** and then click **Automatically discover network video devices**.



3. Follow the wizard instructions and then click **Next**.
4. **ATTENTION!** At this screen, hit enter to move cursor to third line. Input the user name followed by a comma and then input the password on the same line for your IP camera and then click **Next**. (On one line enter: Username, password)

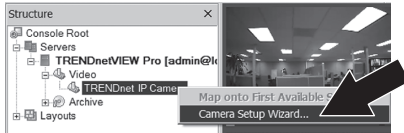


5. Follow the wizard instructions and then click **Finish**.
6. Video will now appear. The camera will be listed in the structure pane.



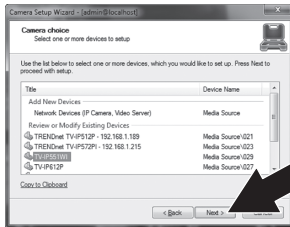
Schedule Continuous and Motion Detection Recordings

1. Right click on the IP camera in the structure pane and click **Camera Setup Wizard**.

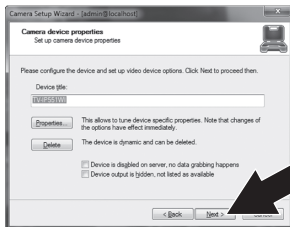


2. Click **Next** and follow the Camera Setup Wizard.

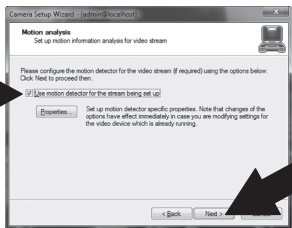
3. Select the camera and then click **Next**.



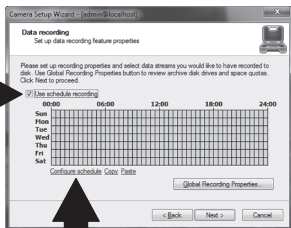
4. Click **Next**.



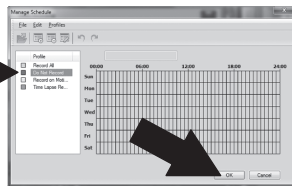
5. Check the Use Motion Detector box and click **Next**.



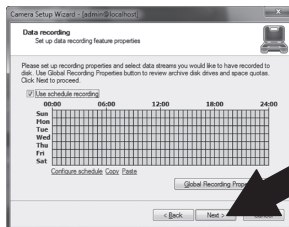
6. Select Use schedule recording and then click **Configure schedule**.



7. The **Manage schedule** window appears. Choose one of the profiles and drag your mouse over the desired time and day of the week. (The schedule displayed below is set up for continuous recording during the day and motion detection recording at all other times) Click **OK** to save your settings.



8. Click **Next**.



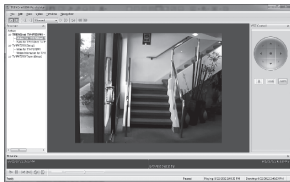
9. Follow the wizard instructions and then click **Finish**.

Archive Video Playback

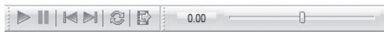
1. Click **Open Archive**.



2. The archive window appears. Select your camera in the structure pane.



3. Playback options include play, pause, previous or next frame, refresh, save current frame and rewind/fast forward.



For detailed information regarding advanced features of **TRENDnetVIEW Pro**, please refer to the User's Guide. The User's Guide can be found on the IP camera's CD-ROM.

Certifications

This device can be expected to comply with Part 15 of the FCC Rules provided it is assembled in exact accordance with the instructions provided with this kit.

Operation is subject to the following conditions:

- (1) This device may not cause harmful interference
- (2) This device must accept any interference received including interference that may cause undesired operation.



Waste electrical and electronic products must not be disposed of with household waste. Please recycle where facilities exist. Check with your Local Authority or Retailer for recycling advice.

Note

The Manufacturer is not responsible for any radio or TV interference caused by unauthorized modifications to this equipment. Such modifications could void the user's authority to operate the equipment.

Advertencia

En todos nuestros equipos se mencionan claramente las características del adaptador de alimentación necesario para su funcionamiento. El uso de un adaptador distinto al mencionado puede producir daños físicos y/o daños al equipo conectado. El adaptador de alimentación debe operar con voltaje y frecuencia de la energía eléctrica domiciliar existente en el país o zona de instalación.

Technical Support

If you have any questions regarding the product installation, please contact our Technical Support.

Toll free US/Canada: 1-866-845-3673

Regional phone numbers available
at www.trendnet.com/support

Product Warranty Registration

Please take a moment to register your product online. Go to TRENDnet's website at:
<http://www.trendnet.com/register>

TRENDnet

20675 Manhattan Place, Torrance, CA 90501. USA

Copyright © 2014. All Rights Reserved. TRENDnet.