

Internet Camera Server Firmware Upgrade Procedure

For Model: TV-IP110, TV-IP110W, TV-IP212, TV-IP212W, TV-IP312, TV-IP312W, TV-IP410, TV-IP410W, TV-IP422, TV-IP422W

Warning:

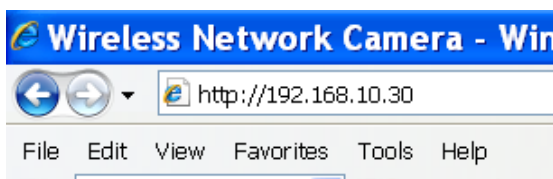
- Always upgrade firmware by using a wired connection.
- Do not interrupt the connection while doing the firmware upgrading

Note:

- 1) The firmware procedure is based on the model of TV-IP212W. All firmware upgrade procedure is the same but with slightly different screenshots.
- 2) It is highly recommend that you do factory reset after firmware upgrade. If you would like to keep your original setting, please back up your configuration file first before doing the firmware upgrade. Please see "How to Back Up Configuration File" & "How to Restore Configuration File" sections below for instruction.

Firmware Upgrade

1. Download the firmware file from www.trendnet.com. Save the firmware on your computer. The firmware file name ends with *.pck extension.
2. Go to Internet Explorer and type in the IP address of your camera
e.g. <http://192.168.10.30>



3. Enter the username & password
By default, the username & password is admin/admin

Connect to 192.168.10.30 ? X



The server 192.168.10.30 at Netcam requires a username and password.

Warning: This server is requesting that your username and password be sent in an insecure manner (basic authentication without a secure connection).

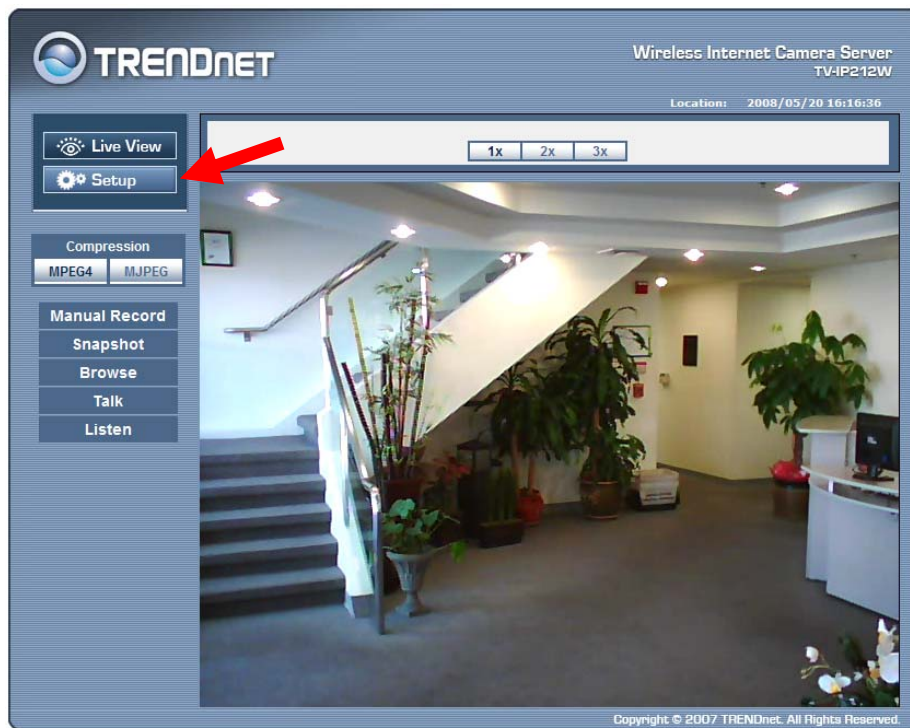
User name:

Password:

☐ Remember my password

OK Cancel

4. Click **Setup**



5. Click **Tools**

TRENDnet Wireless Internet Camera Server TV-IP212W

Location: 2008/05/20 17:19:54

Basic » System

Basic

Camera Name:

Location:

Indication LED

Indication LED control: ☒ Normal ☐ OFF

Apply Cancel

Copyright © 2007 TRENDnet. All Rights Reserved.

6. Check the firmware version first. Click **Browse** to choose the firmware file. Once the firmware is ready, click **Upgrade**.

TRENDnet Wireless Internet Camera Server TV-IP212W

Location: 2008/05/20 17:28:23

System Tools » Tools

Factory Reset

Factory reset will restore the device's factory default settings.

Reset

System Reboot

Reboot the device.

Reboot

Configuration

Backup the device configurations. Click the button bellow and save the device configurations to your local harddrive.

Get the backup file

Restore your device's configuration from a backup file.

Browse... Restore

Update Firmware

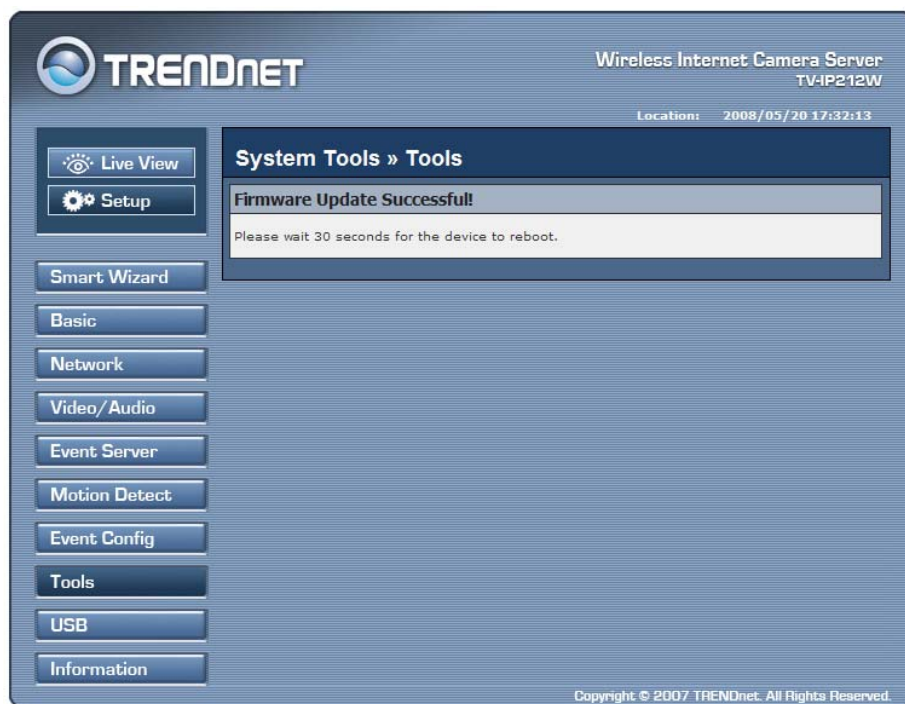
Current Firmware Version : 1.0.0 build: 25

Select the firmware:

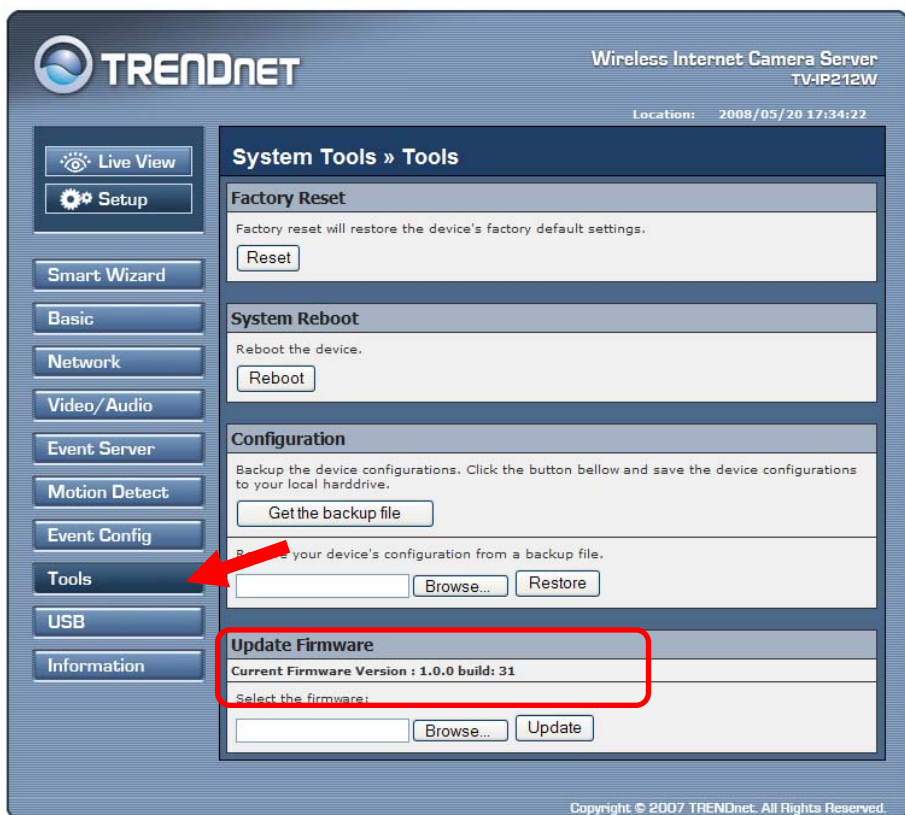
FW_TV-IP212W_1.0.0- Browse... Update

Copyright © 2007 TRENDnet. All Rights Reserved.

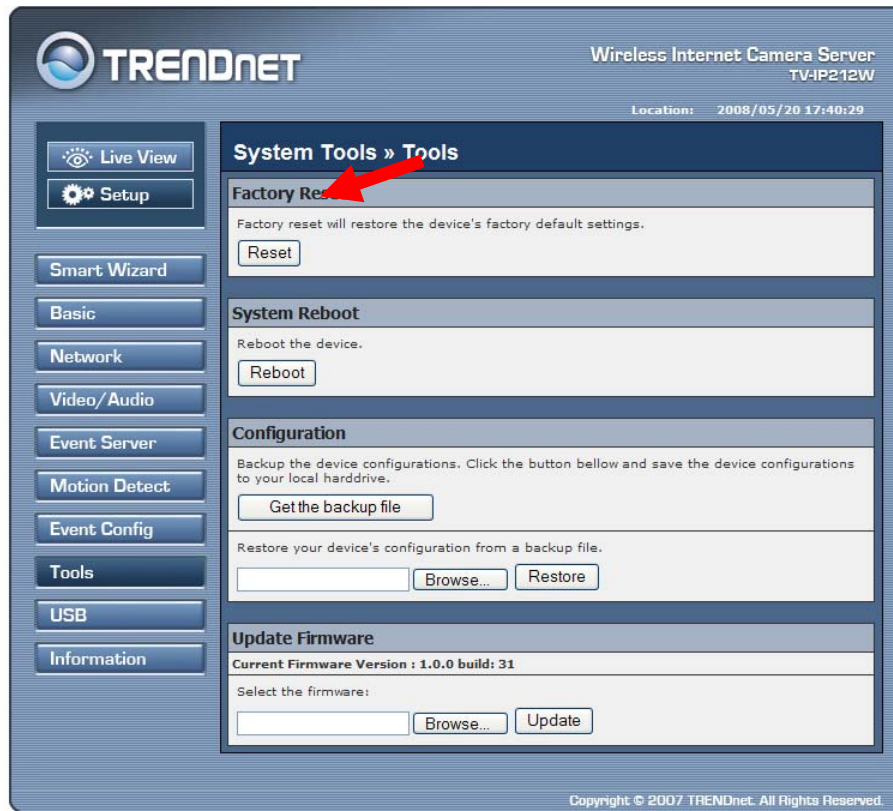
7. Wait 30 seconds for the device reboot.



8. After 30 seconds, click **Tools** again to check the firmware version.

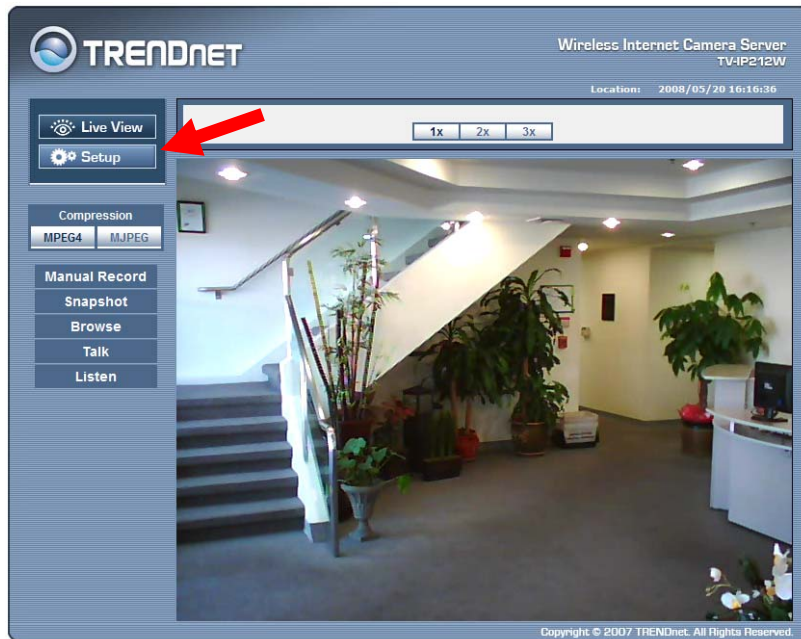


9. Click **Factory Reset**, , your firmware upgrade is now completed. You have to use PS-Utility to reset it's IP address back to original IP address

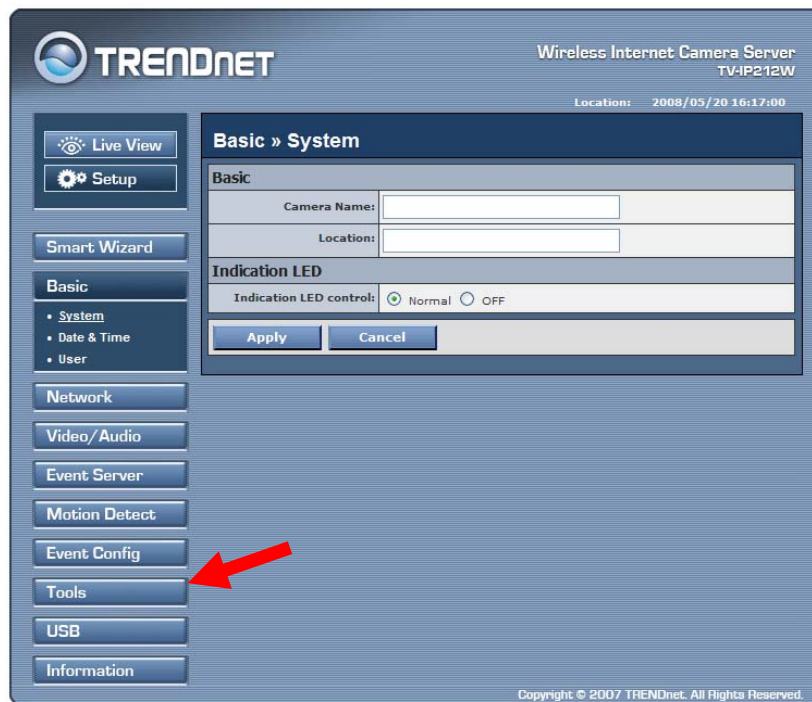


How to Back Up Configuration File

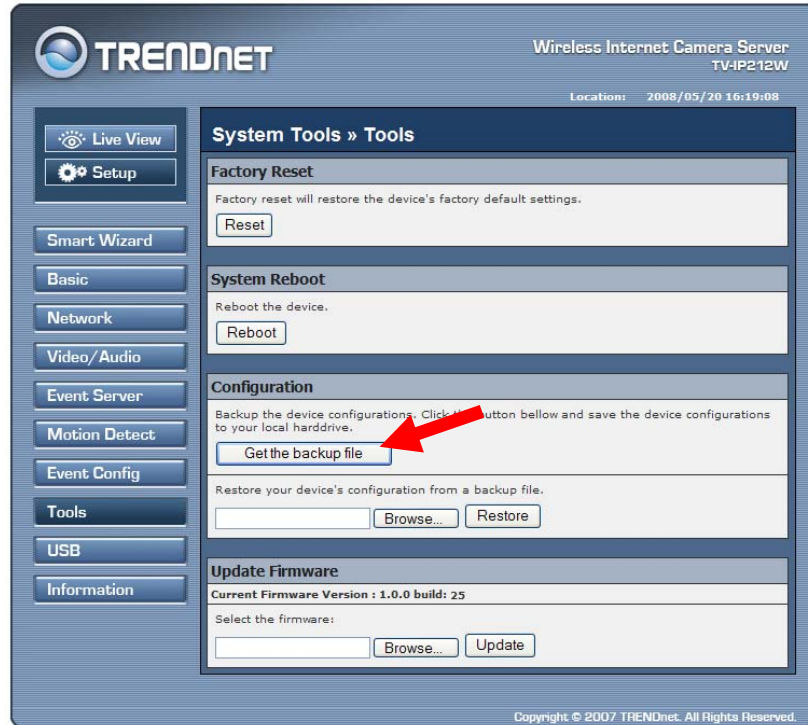
1. Click **Setup**



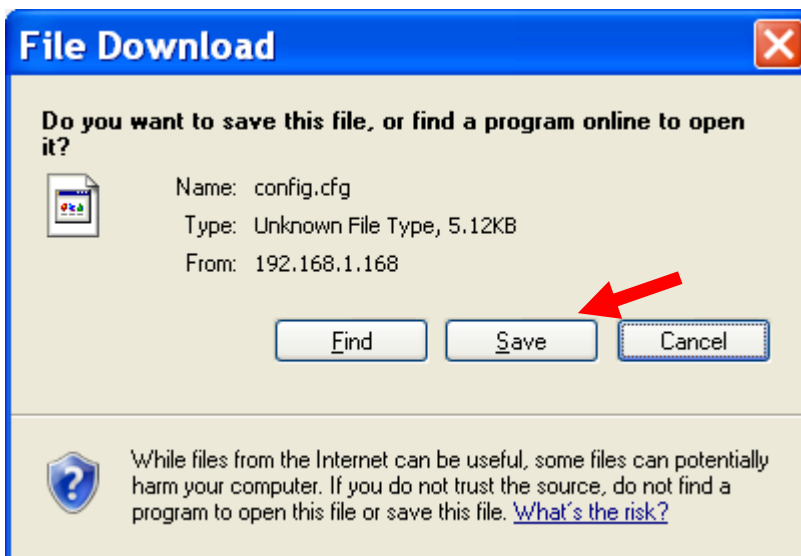
2. Click **Tools**



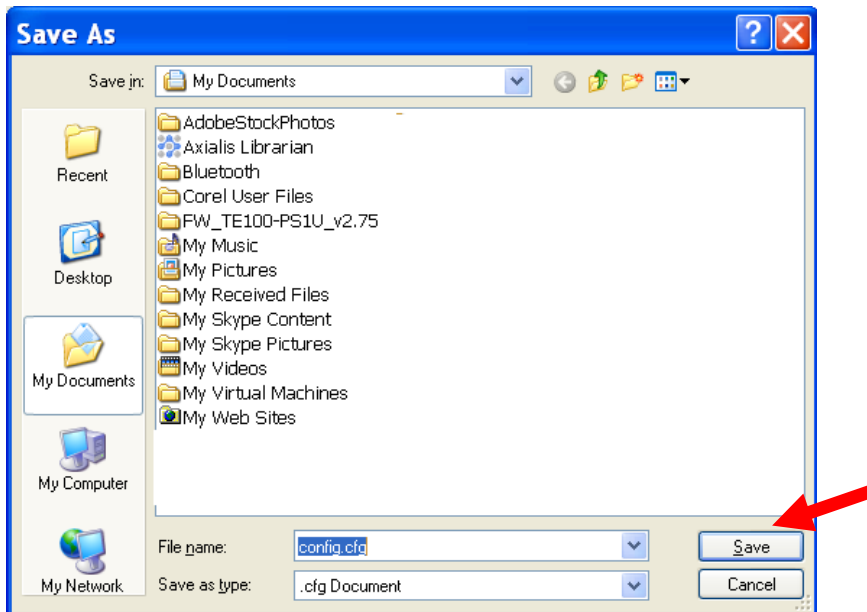
3. Click **Get the backup file**



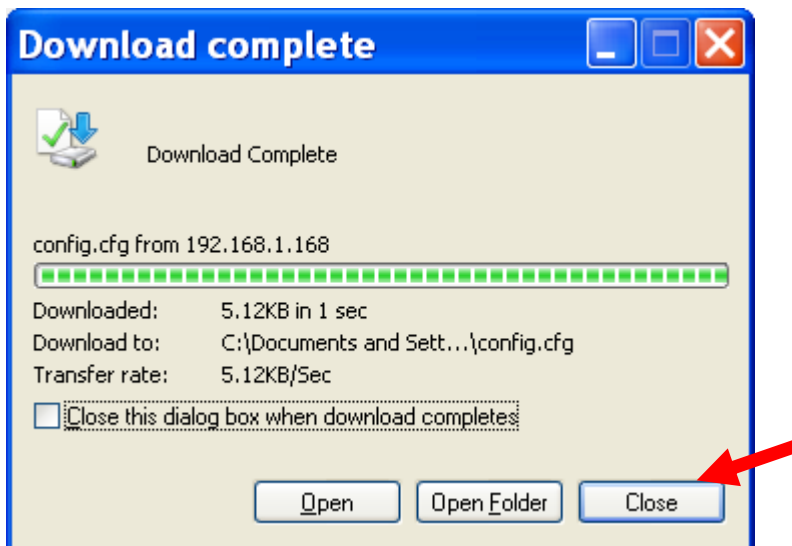
4. Click **Save**



5. Browse to your desired destination, then click **Save**.

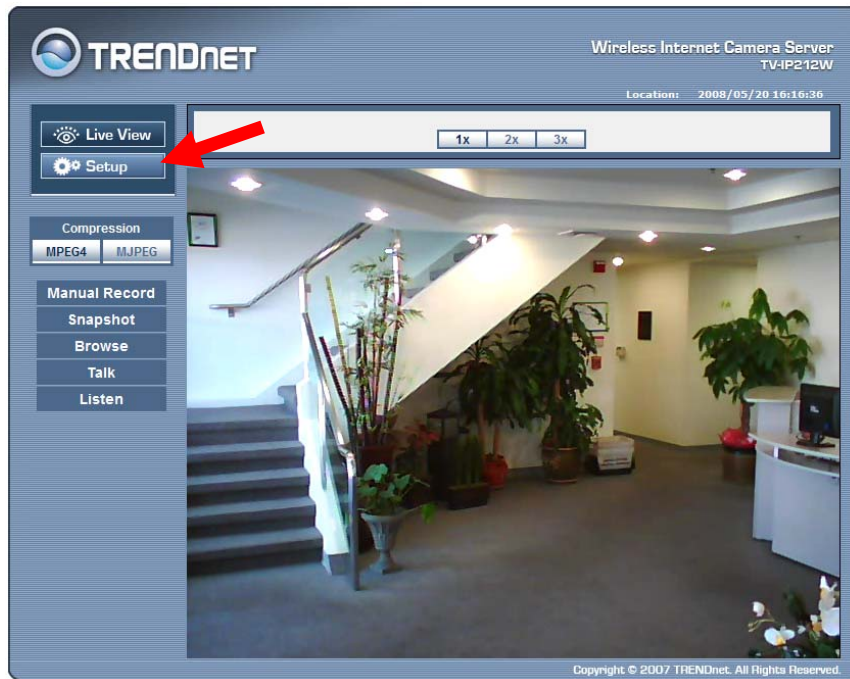


6. Click **Close**. Your configuration is now successful back up.

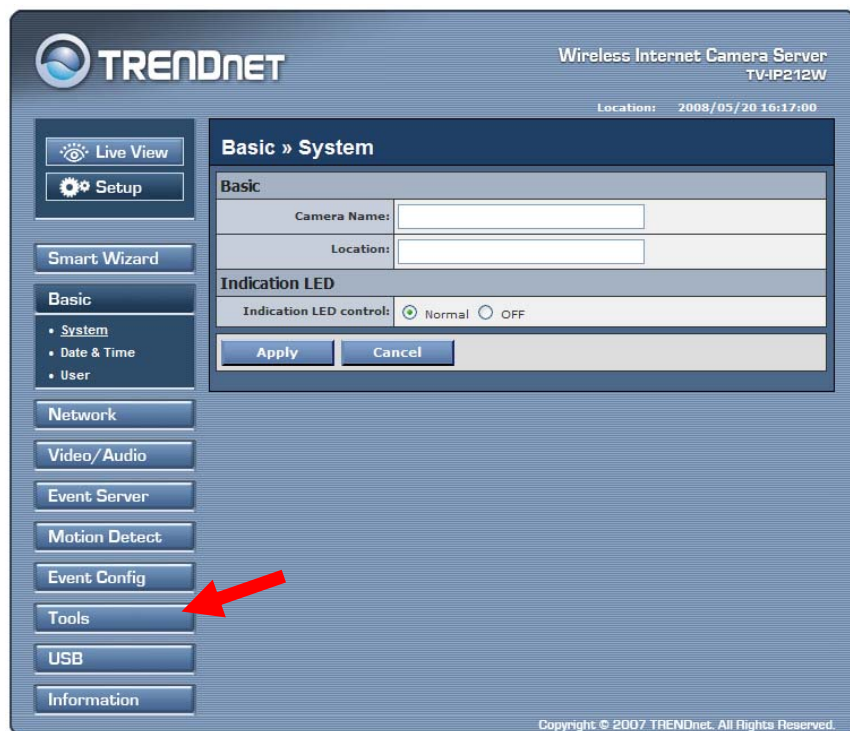


How to retstore your back up file

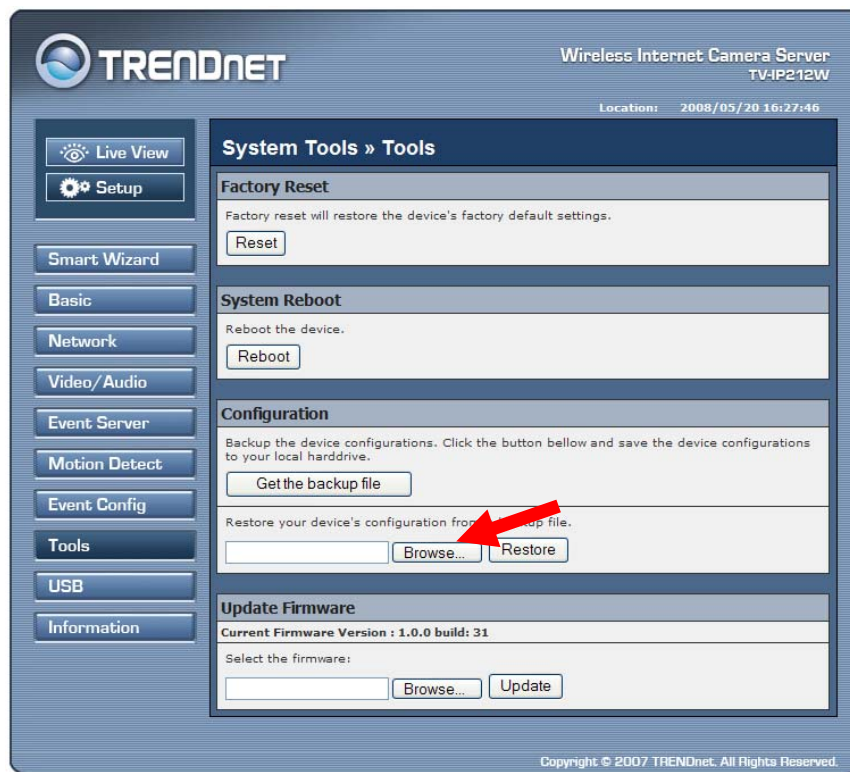
1. Click **Setup**



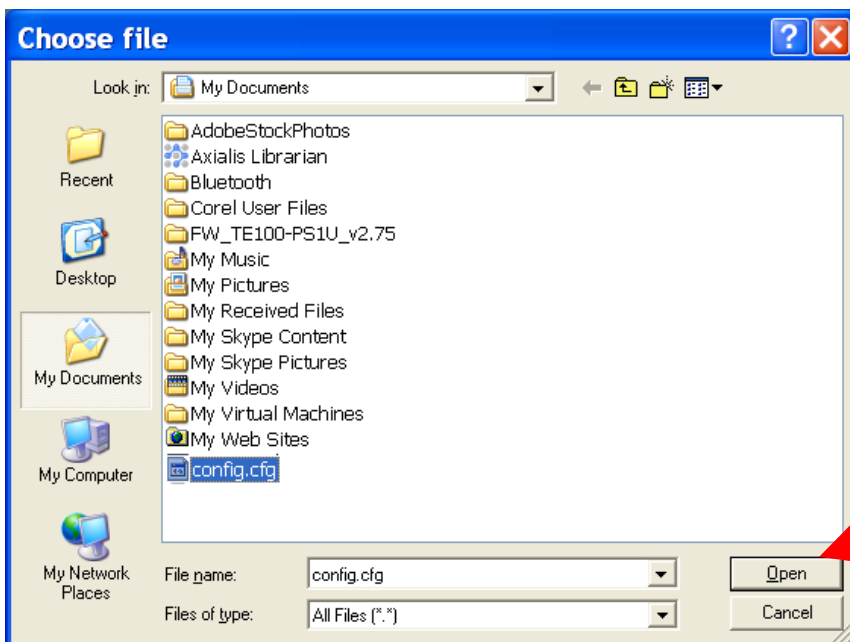
2. Click **Tools**



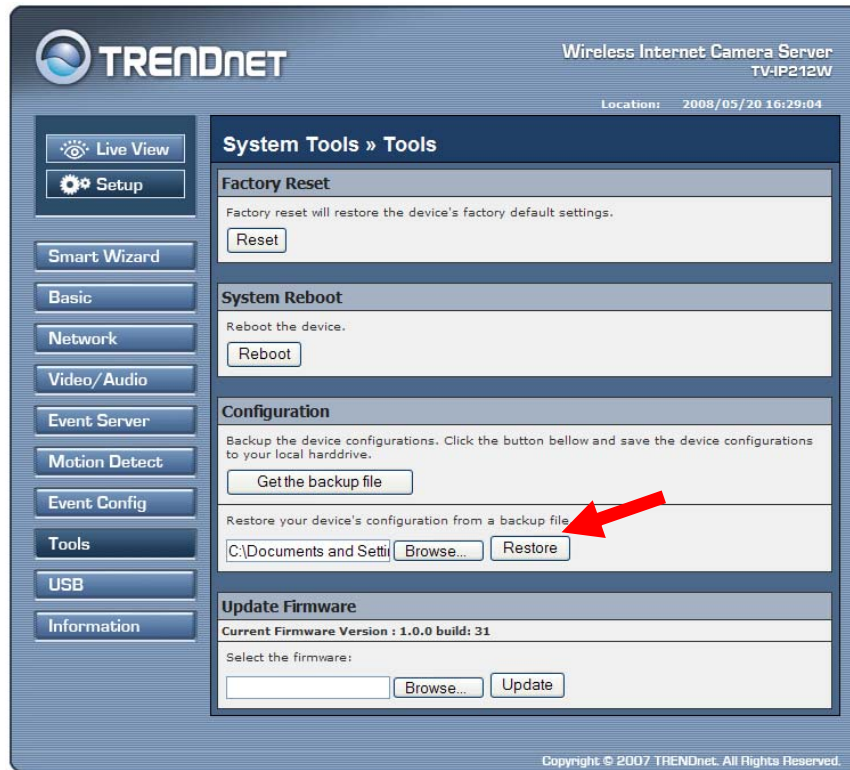
3. In **Configuration** section, Click **Browse**



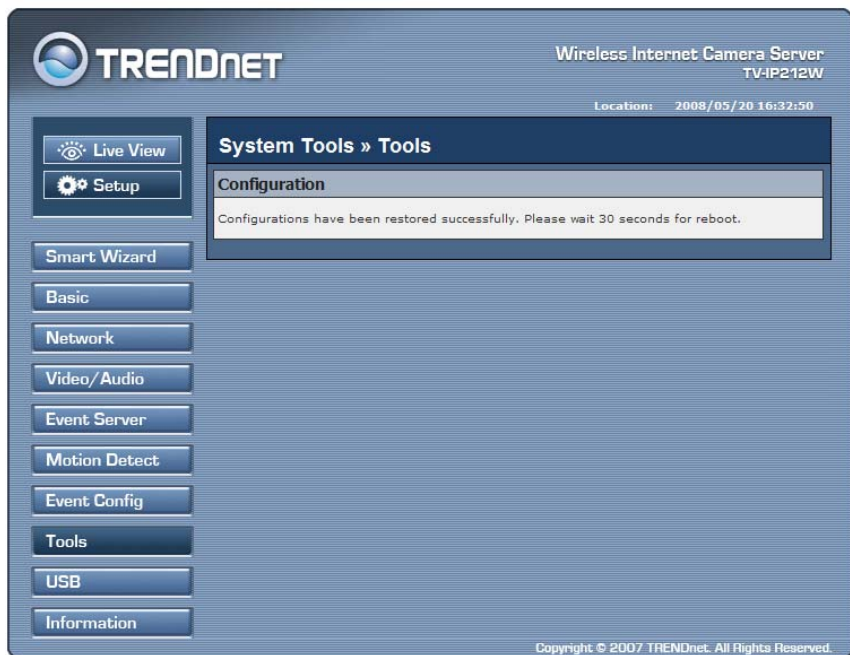
4. Select the config.cfg file, then click **Open**



5. Click Restore



6. Wait 30 seconds for the device reboot.



7. After 30 seconds, click any button to verify your setting.

TRENDnet Wireless Internet Camera Server
TV-IP212W
Location: 2008/05/20 16:37:42

Event Server Setting » FTP

FTP

Host Address:	65.123.23.23
Port Number:	21
User Name:	admin
Password:	•••••
Directory Path:	\\testing
Passive mode:	<input checked="" type="checkbox"/> Enable

Test **Apply** **Cancel**

Copyright © 2007 TRENDnet. All Rights Reserved.