



TRENDNET



Quick Installation Guide



TV-IP201
TV-IP201W

Table of Contents

English	1
1. Before You Start	1
2. How to Connect	2
3. Configure the Internet Camera	3
4. Using the Internet Camera Wirelessly (TV-IP201W only)	4
Troubleshooting	5

1. Before You Start



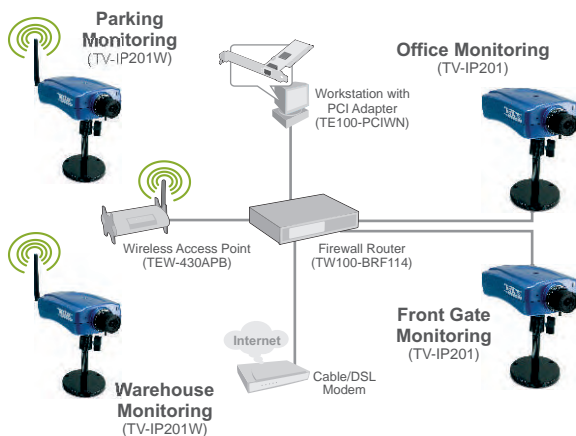
Package Content

- TV-IP201/TV-IP201W
- Antenna (TV-IP201W)
- Metal Stand
- Utility CD-ROM
- AC Power Adapter
- Quick Installation Guide

System Requirements

- 10/100Mbps Ethernet
- CPU: Intel Celeron 1.1Ghz or above
- Memory: 512MB or above
- Web Browser: Microsoft Internet Explorer 5.0 or above, Netscape 6.0 or above
- VGA Resolution: 800 x 600 or above

Application



2. How to Connect

1. Mount the Internet Camera to the metal stand.



2. Attach the Antenna. (TV-IP201W)

3. Connect a RJ-45 network cable from a Switch/Router to the **LAN** port of the Internet Camera.

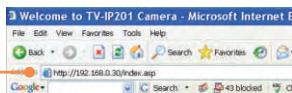
4. Connect the AC Power Adapter to the Internet Camera and then to a power outlet.



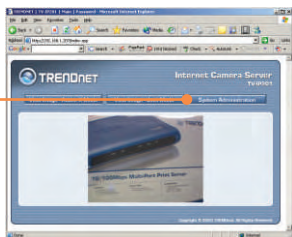
3. Configure the Internet Camera

Note: To access and configure the Internet Camera, both the Internet Camera and your computer's network adapter must be on the same network segment.

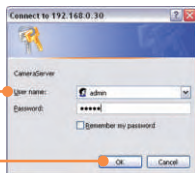
1. Open your web browser, type **http://192.168.0.30** in the Address bar, and press **Enter**.



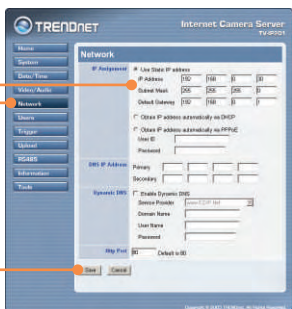
2. To access the configuration page, click **System Administration**.



3. Enter username and password, then click **OK**.
Username: **admin**
Password: **admin**



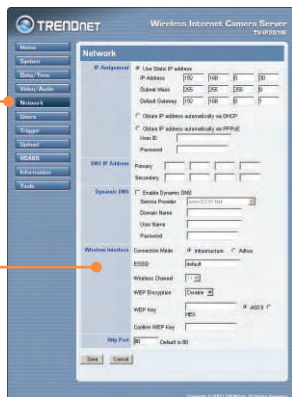
4. Click on **Network**, configure network settings to match your network segment (i.e. 192.168.1.207), and then click **Save**.



The Installation for TV-IP201 is Now complete.

4. Using the Internet Camera Wirelessly (TV-IP201W only)

1. Click on **Network** and scroll down to **Wireless Interface** section.



2. Enter the ESSID to match your wireless access point and click **Save**. (Enable/Enter the WEP information when your wireless network is encrypted)



3. Disconnect the RJ-45 cable from the camera.

The Installation for TV-IP201W is Now complete.

For detailed information regarding the TV-IP201/TV-IP201W configuration and advanced settings, please refer to the User's Guide CD-ROM or TRENDnet's website at www.trendnet.com.

Q1: The image is blurry. How do I fix this?

A1: You can adjust the Internet Camera's focus by rotating the lens.

Q2: Can I replace the camera lens?

A2: The Internet Camera's Lens is replaceable with a standard CS-Mount type lens.

Q3: How do I view the Internet Camera's live images within my Local Network?

A3: Open a web browser (Internet Explorer or Netscape), type your Internet Camera's IP address (i.e.: 192.168.1.203) in the Address bar, and then hit the Enter key. The Welcome page of the Internet Camera will appear.

Q4: When I view the camera in ActiveX mode, the image does not load, why?

A4: Please make sure ActiveX is enabled for Internet Explorer, refer to your web browser's user manual regarding ActiveX.

If you still encounter problems or have any questions regarding the TV-IP201/TV-IP201W, please contact TRENDnet's Technical Support Department.

Certifications

This equipment has been tested and found to comply with FCC and CE Rules.

Operation is subject to the following two conditions:

- (1) This device may not cause harmful interference.
- (2) This device must accept any interference received. Including interference that may cause undesired operation.



Waste electrical and electronic products must not be disposed of with household waste. Please recycle where facilities exist. Check with your Local Authority or Retailer for recycling advice.



NOTE: THE MANUFACTURER IS NOT RESPONSIBLE FOR ANY RADIO OR TV INTERFERENCE CAUSED BY UNAUTHORIZED MODIFICATIONS TO THIS EQUIPMENT. SUCH MODIFICATIONS COULD VOID THE USER'S AUTHORITY TO OPERATE THE EQUIPMENT.



TRENDnet

TRENDnet Technical Support

US/Canada Support Center

Contact

Telephone: 1(888) 777-1550

Fax: 1(310) 626-6267

Email: support@trendnet.com

Tech Support Hours

7:30am - 6:00pm
Pacific Standard Time
Monday - Friday

European Support Center

Contact**Telephone:**

Deutsch : +49 (0) 6331 / 268-460

Français : +49 (0) 6331 / 268-461

0800-907-161 (numéro vert)

Español : +49 (0) 6331 / 268-462

English : +49 (0) 6331 / 268-463

Italiano : +49 (0) 6331 / 268-464

Dutch : +49 (0) 6331 / 268-465

Fax: +49 (0) 6331 / 268-466

Tech Support Hours

8:00am - 6:00pm
Middle European Time
Monday - Friday

Product Warranty Registration

Please take a moment to register your product online.

Go to TRENDnet's website at <http://www.trendnet.com>

TRENDnet

3135 Kashiwa Street
Torrance, CA 90505
USA