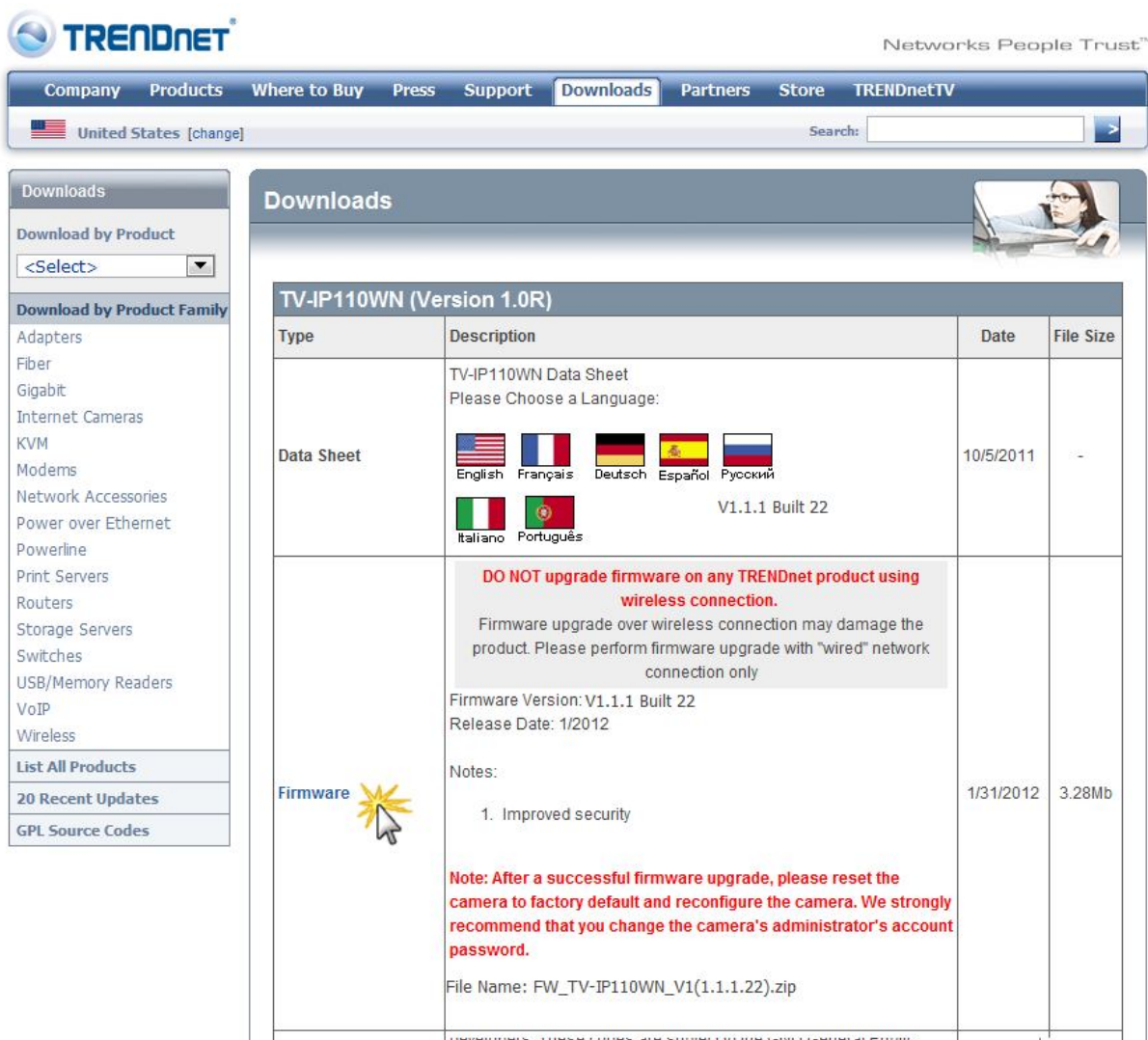


Firmware Upgrade Procedure

jfmh04272012

1. Only perform the upgrade with wired connection. If the camera is currently in wireless mode, please power off the camera, connect it to your router's network (LAN) port using a network cable, and power it back on.
2. Connect a computer to your Internet router using a network cable and close all applications. Open web browser, go to <http://www.trendnet.com/downloads/>. Select model number and hardware version for your camera. Click on **Firmware** and follow instructions to download and save the file in a location where you can easily find and access the firmware file (e.g. Desktop). The file is compressed. You will need to extract it after downloading.
3. Click **Firmware**



TRENDnet Networks People Trust™

Company Products Where to Buy Press Support Downloads Partners Store TRENDnetTV

United States [change] Search:

Downloads

Download by Product:



Download by Product Family:

- Adapters
- Fiber
- Gigabit
- Internet Cameras
- KVM
- Modems
- Network Accessories
- Power over Ethernet
- Powerline
- Print Servers
- Routers
- Storage Servers
- Switches
- USB/Memory Readers
- VoIP
- Wireless

List All Products
20 Recent Updates
GPL Source Codes

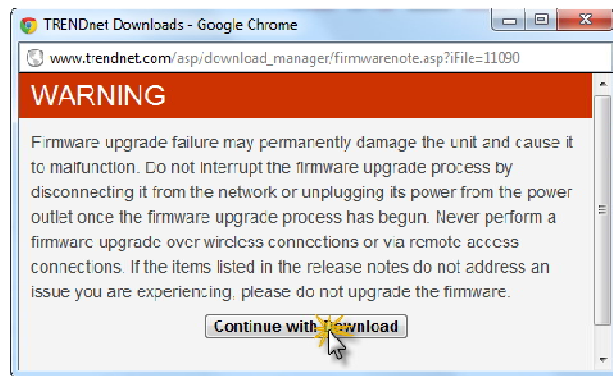
Downloads

TV-IP110WN (Version 1.0R)

Type	Description	Date	File Size
Data Sheet	TV-IP110WN Data Sheet Please Choose a Language:  English Français Deutsch Español Русский Italiano Português V1.1.1 Built 22	10/5/2011	-
Firmware 	DO NOT upgrade firmware on any TRENDnet product using wireless connection. Firmware upgrade over wireless connection may damage the product. Please perform firmware upgrade with "wired" network connection only Firmware Version: V1.1.1 Built 22 Release Date: 1/2012 Notes: 1. Improved security Note: After a successful firmware upgrade, please reset the camera to factory default and reconfigure the camera. We strongly recommend that you change the camera's administrator's account password. File Name: FW_TV-IP110WN_V1(1.1.1.22).zip	1/31/2012	3.28Mb

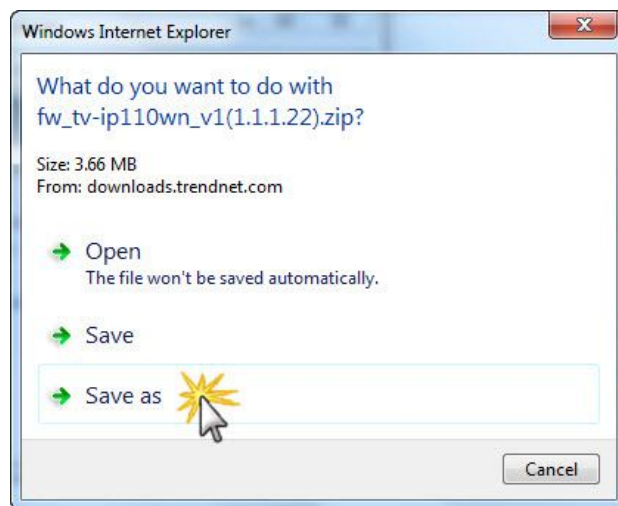
developers. These codes are subject to the GNU General Public

4. Click **Continue with Download**

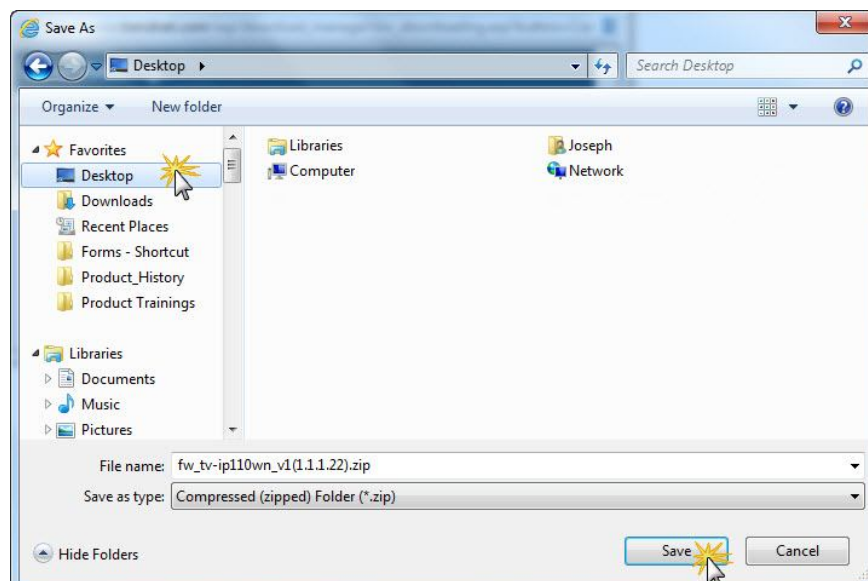


5. Click **Save as**

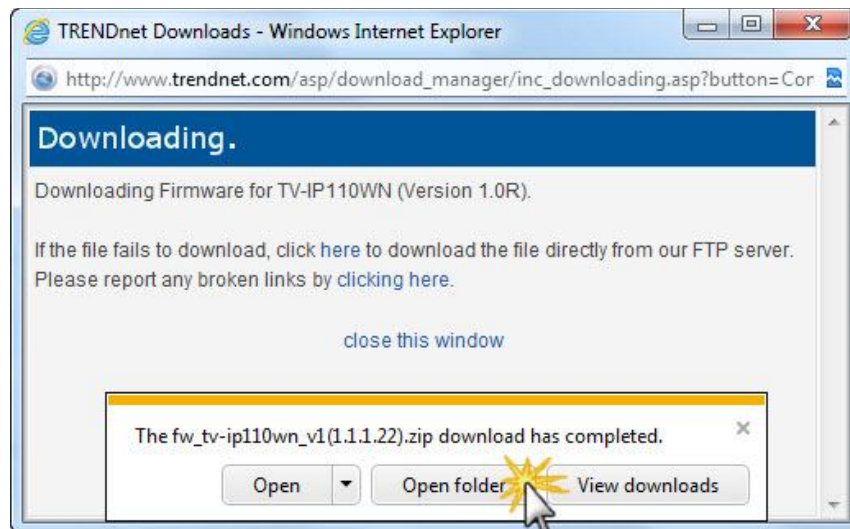
Please note that the file name & firmware version will change depending on the model number of the product.



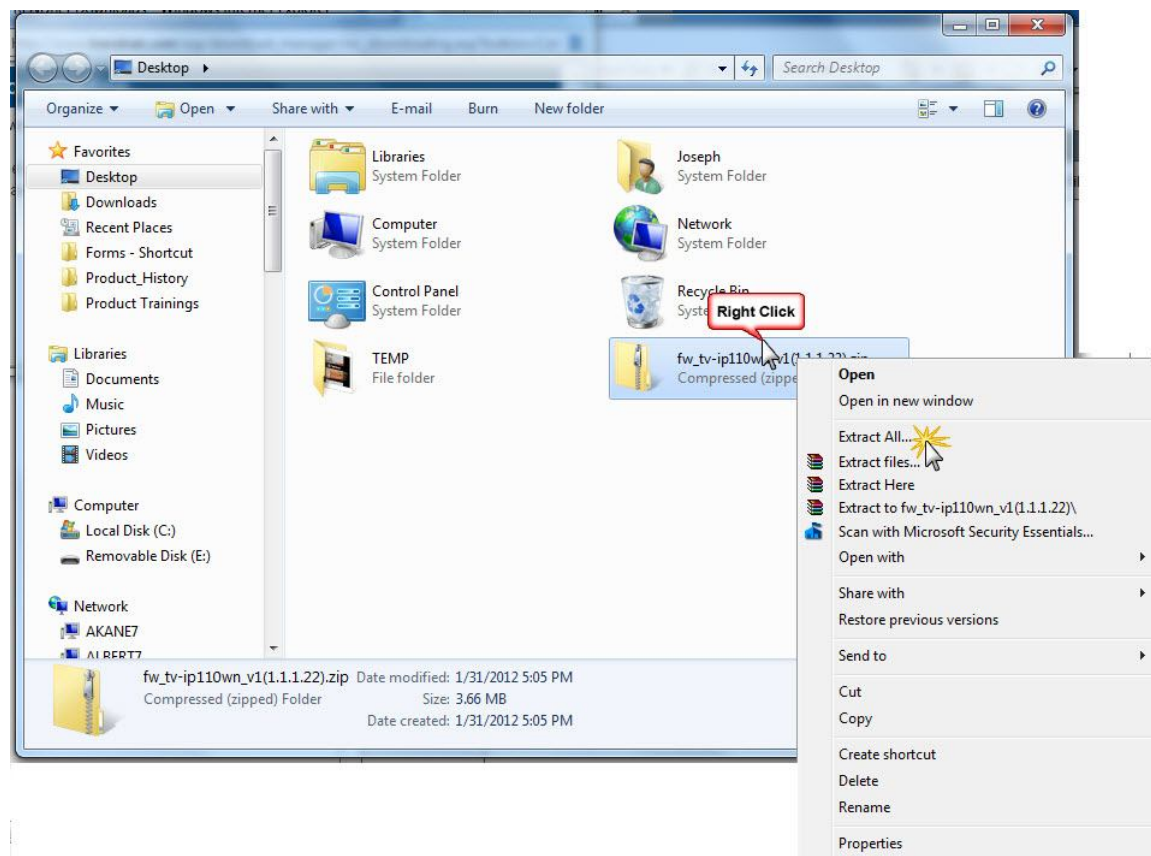
6. Select your Desktop to save the file then press **Save**.



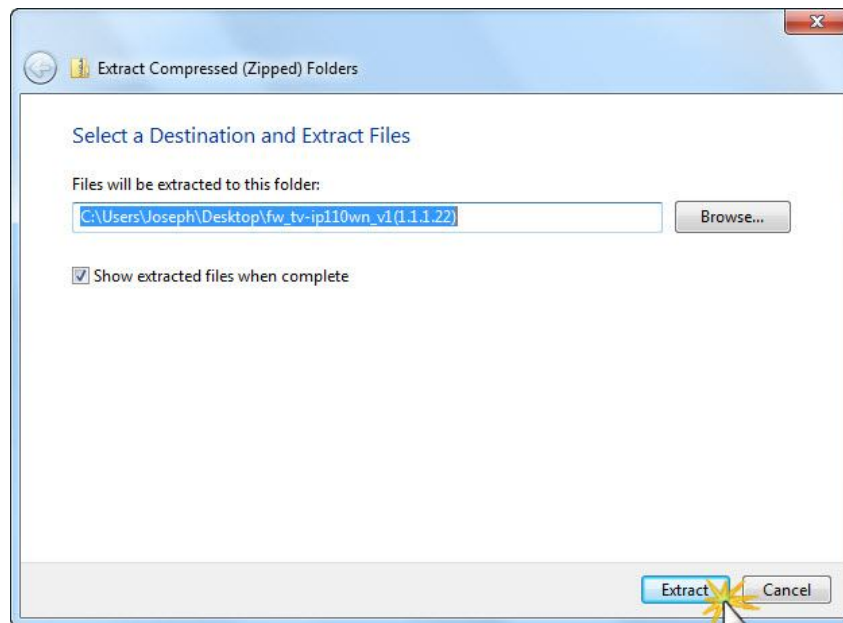
- After the file has finished downloading open the location that you saved the file to.



- Right click on the compressed file then click **Extract All**

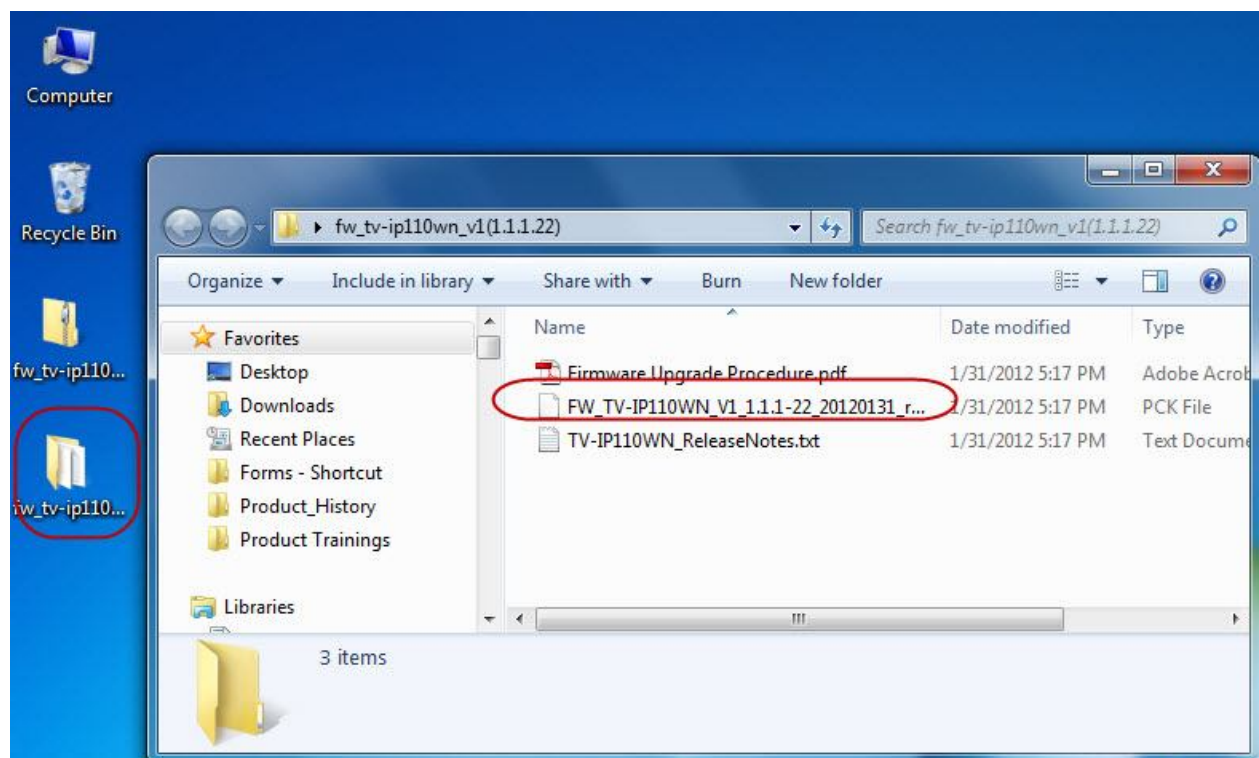


9. Click **Extract**

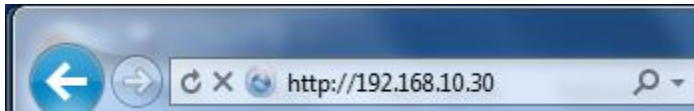


10. You will now have an uncompressed folder in the location you extracted the file to. The firmware file is **FW_TV-IP110WN_1.1.1-22_20120131_r1094**

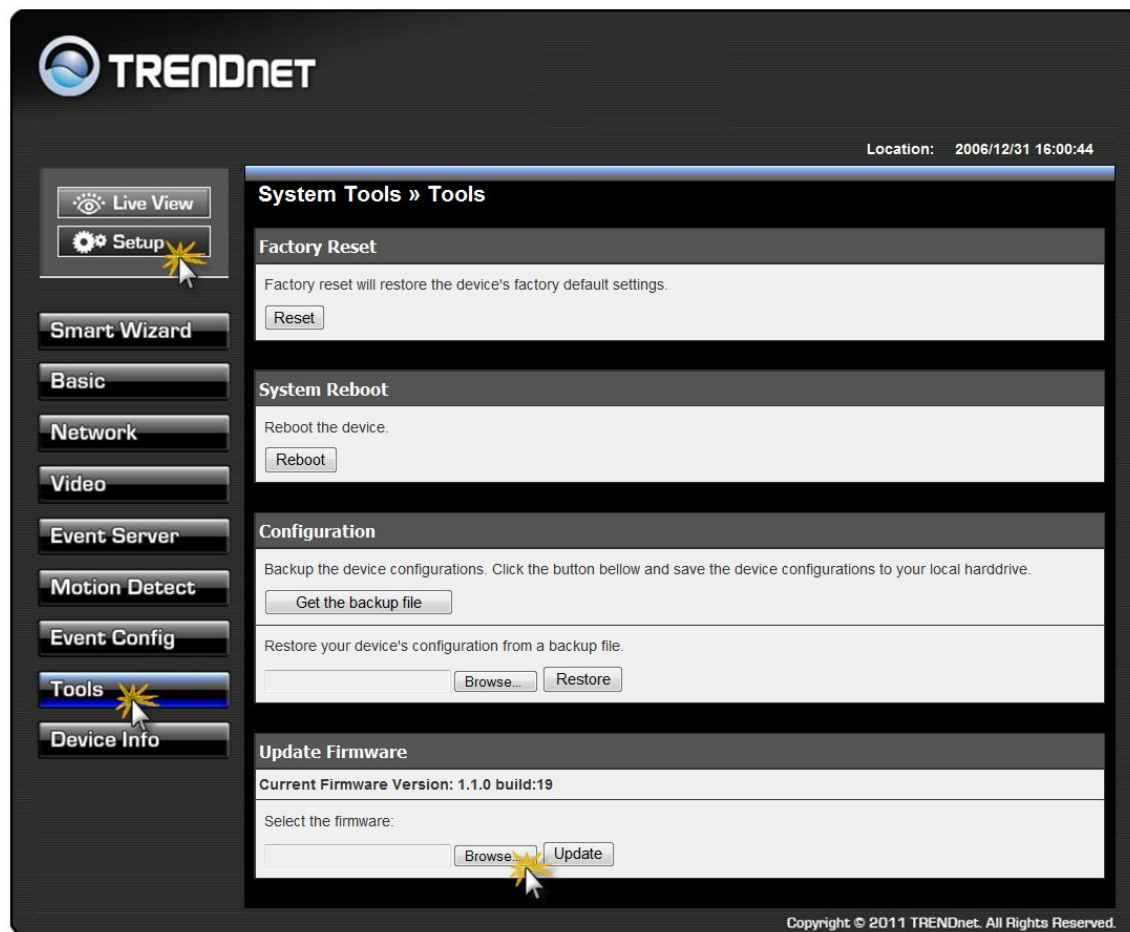
Please note that the firmware file name will change depending on the model number & firmware version of the product. The file name would always start with "FW_" and then the product model name



11. Open a web browser (e.g. Internet Explorer) and log in to the camera's configuration page. The default IP address is <http://192.168.10.30>. The default username and password are both **admin**. If you do not know the camera's default IP address, you can download and run **IP Setup** from the following address http://www.trendnet.com/downloads/list_subcategory.asp?SUBTYPE_ID=1172

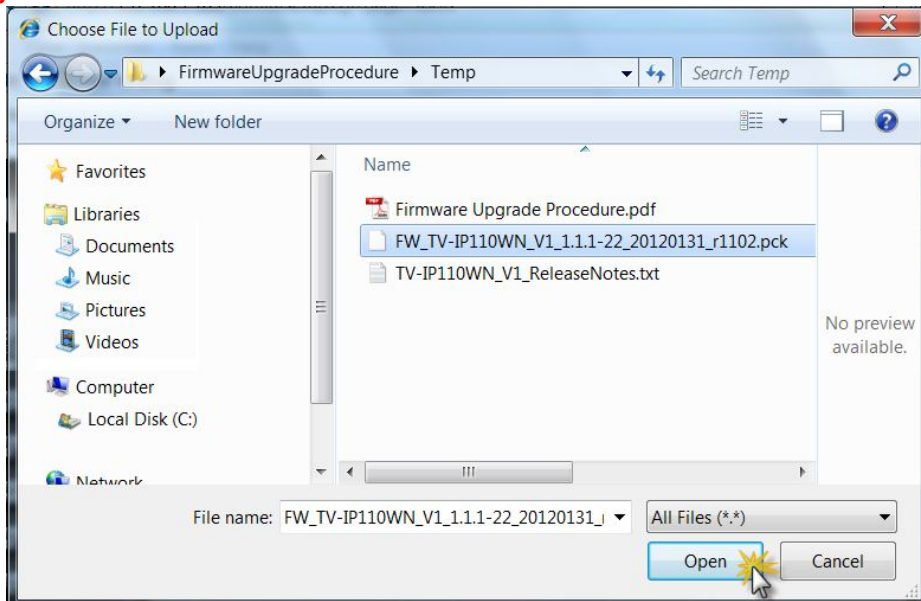


12. Click **Setup** and then click **Tools**. At the bottom of the page under **Update Firmware** click **Browse...**

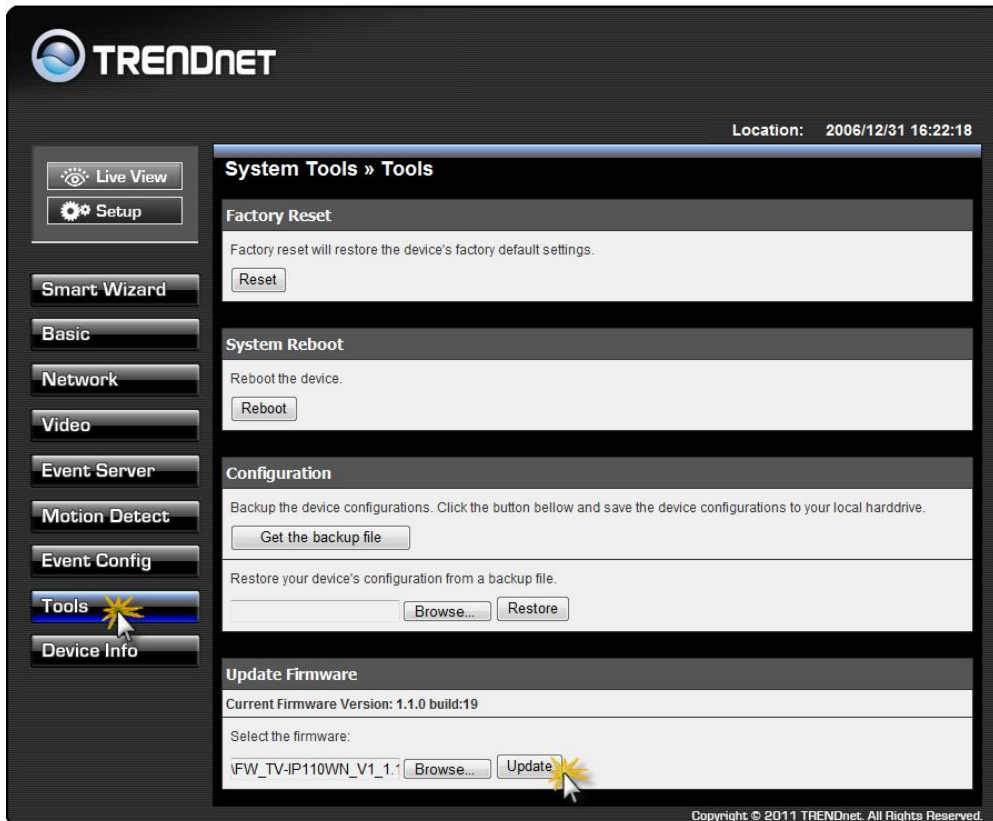


13. Navigate to the uncompressed folder that you downloaded, select the firmware file **FW_TV- 1 V 1 1** then click **Open**.

Please note that the file name will change depending on the model number & firmware version of the product. The file name would always start with "FW_" and then the product model name & firmware version.

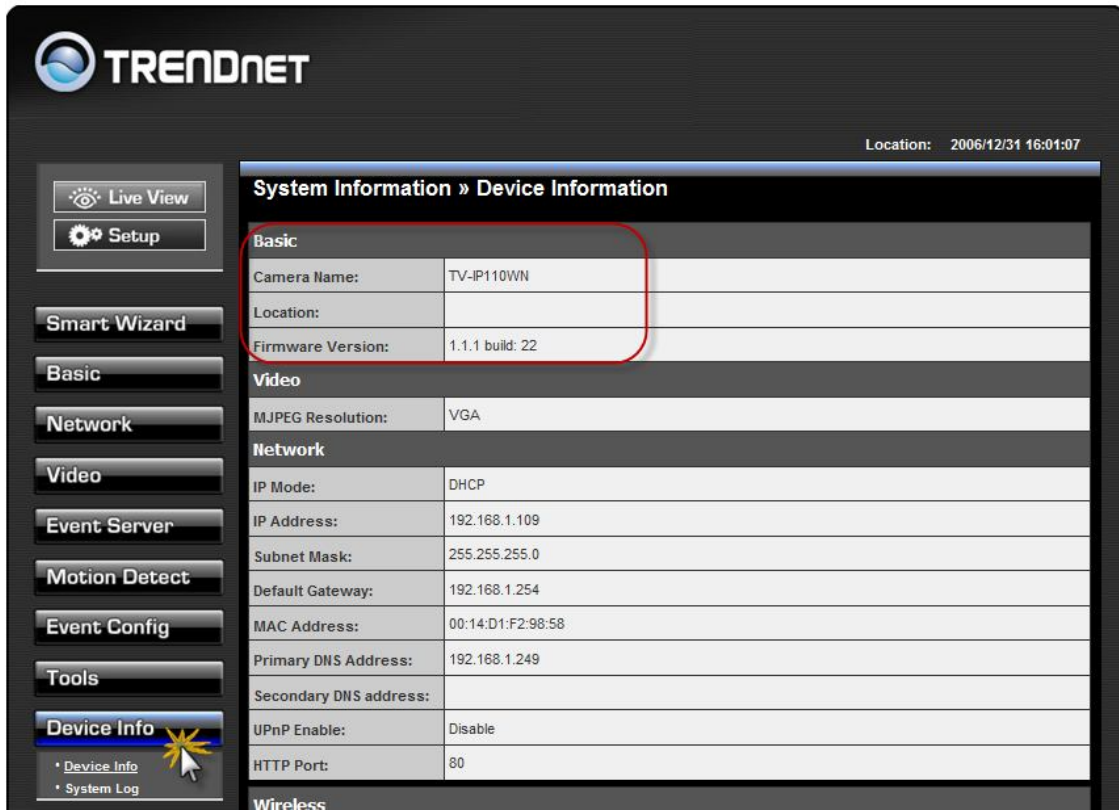


14. Click on the **Update** button.



The update will take approximately 60 seconds to complete. Please do not disconnect the network cables, do not turn off the computer or camera and do not operate the web browser.

15. After the firmware upgrade is completed you should see the message **Upgrade successful...please wait 30 seconds for the camera to reboot**. Wait 30 seconds for the camera to reboot. Refresh the web browser and you should still be on the camera's **Tools** page. If not, please click on **Setup** then **Tools** on the left hand side. Under **Factory Reset**, click on **Reset** and wait for 30 seconds for the reset process to complete.
16. After completing the factory reset, refresh the web browser again. Click **Device Info** on the left hand side. Under the **Basic** section check the current firmware version. It should show **Firmware version**

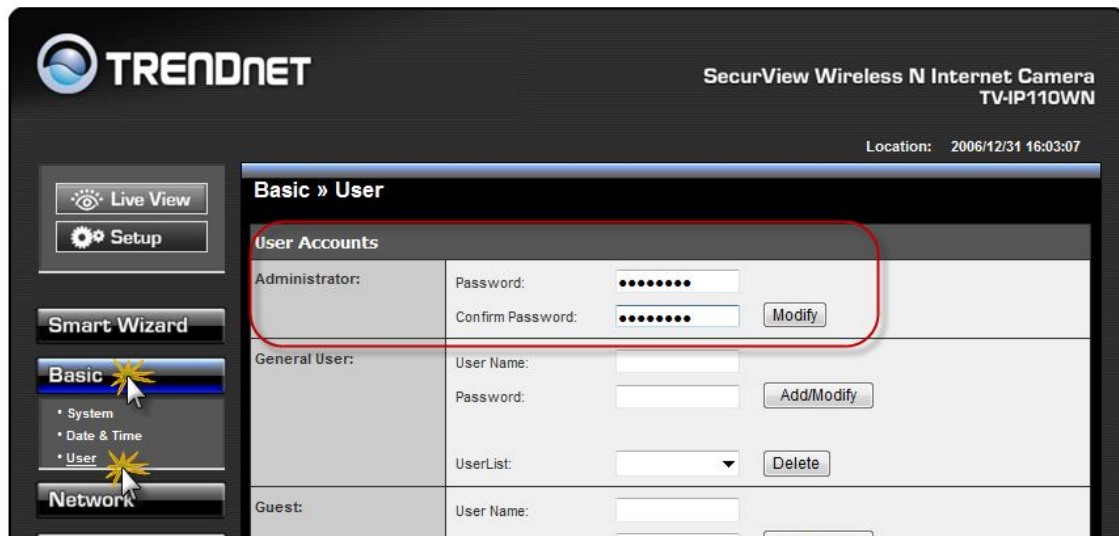


The screenshot displays the TrendNet web interface. On the left is a navigation menu with buttons for 'Live View', 'Setup', 'Smart Wizard', 'Basic', 'Network', 'Video', 'Event Server', 'Motion Detect', 'Event Config', 'Tools', and 'Device Info'. The 'Device Info' button is highlighted with a mouse cursor. The main content area is titled 'System Information » Device Information'. It contains several sections: 'Basic', 'Video', and 'Network'. The 'Basic' section is highlighted with a red rounded rectangle and contains the following information:

Basic	
Camera Name:	TV-IP110WN
Location:	
Firmware Version:	1.1.1 build: 22

Below the 'Basic' section, the 'Video' section shows 'MJPEG Resolution: VGA'. The 'Network' section shows 'IP Mode: DHCP', 'IP Address: 192.168.1.109', 'Subnet Mask: 255.255.255.0', 'Default Gateway: 192.168.1.254', 'MAC Address: 00:14:D1:F2:98:58', 'Primary DNS Address: 192.168.1.249', 'Secondary DNS address:', 'UPnP Enable: Disable', and 'HTTP Port: 80'. At the bottom, the 'Wireless' section is partially visible.

17. You can now reconfigure the camera. Do not import a previously saved configuration file from previous firmware versions. We strongly recommend that you change the camera's default administrator password. You can do this under the **Setup > Basic > User** page



The end of this document.