

TV-IP100W F.A.Q.

Q: How can I configure my TV-IP100 (A1/B2) through the web-based configuration?

A: Open your web browser and type the IP address of the TV- IP100 (A1 / B2) in the address bar. The default IP address is 192.168.0.20.

Q: What is the default IP address of my TV-IP100 (A1/B2)?

A: The default IP address is 192.168.0.20

Q: How can I view the TV-IP100 (A1/B2) remotely if it's behind a router or firewall?

A: Each camera behind a firewall or router will need one port forwarded for the video streaming. The default port is: 80 (TCP) HTTP Port.

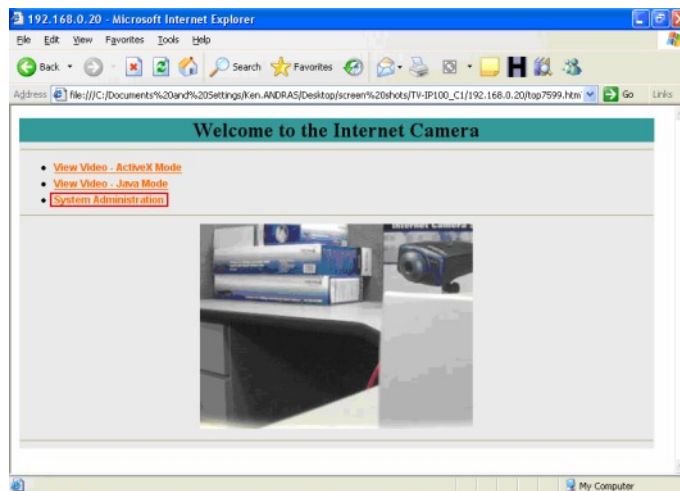
If you are installing multiple cameras you must change the port on the additional cameras.

Example: Camera 1 is using the default port 80 (TCP). Camera 2 must use a different port. For example: 81 (TCP) HTTP Port.

You can change the port on the camera on the System Administration tab in the web-configuration page.

Step 1. Open your web browser and type the IP address of the TV-IP100 (A1/B1) in the address bar. The default IP address is 192.168.0.20.

Step 2. Click on “**System Administration**”.



TV-IP100W F.A.Q.

Step 3. Click on the “**System**” link at the top of the page.

System | Image | Users | Date Time | Upload | E-mail | Information | Tools | Home

System

Camera Name : CS-051503

Location : _____

Admin

Admin ID : _____

Admin Password : _____

Confirm Password : _____

IP Assignment

Manually Assign

IP Address : 192.168.0.20

Subnet Mask : 255.255.255.0

Default Gateway : 192.168.0.1

Assign Automatically Using

RARP

BOOTP

DHCP

PPPoE

Service Name : _____

User ID : _____

Password : _____

DNS IP Address

1 : 0.0.0.0

2 : 0.0.0.0

Dynamic DNS

Yes No

Service Provider : _____

Host Name : _____

User Name : _____

Password : _____

Wireless Interface

Connection Mode : Infrastructure Adhoc

Network Name : _____ (ESS-ID)

Wireless Channel : 11

WEP Key Encryption : Disable 64 bits 128 bits

WEP Key : _____ ASCII HEX

Confirm WEP Key : _____

LED Control

Normal OFF Dummy

Loading ActiveX From : _____

Open Second Port

Yes No

1 : Web Server Default 80

81

2 : Transfer Image Default 8481

8482

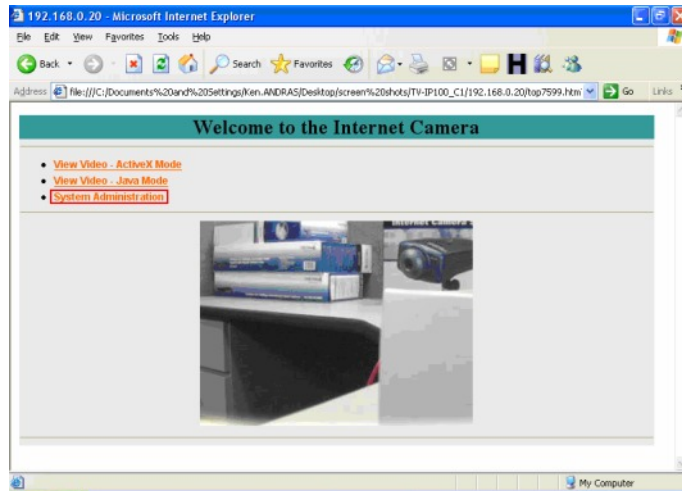
Save Cancel

TV-IP100W F.A.Q.

Q: How do I make the camera wireless?

A: Step 1. Open your web browser and type the IP address of the TV-IP100 (A1/B2) in the address bar. The default IP address is 192.168.0.20.

Step 2. Click on “**System Administration**”.



Step 3. Click on “**System**” at the top of the screen.

Step 4. Input the ESS-ID, Channel and if you have Encryption setup on our network, you will need to input that information as well, the click “**Save**”.

Note: All information has to match that of your wireless router or access point.

Step 5. After saving the information, unplug the Ethernet cable from the back of the camera, next, unplug the power from the back of the camera for 10 seconds.

Step 6. Plug the power back into the camera and wait for 30 seconds.

TV-IP100W F.A.Q.

Step 7. Open your web browser and type the IP address of the TV-IP100 (A1/B2) in the address bar. The default IP address is 192.168.0.20.

The screenshot displays the 'System' configuration page of the TV-IP100W. The page is organized into several sections, each with a teal header. The 'IP Assignment' section is highlighted with a red rectangular box. In this section, the 'Manually Assign' radio button is selected. The fields for IP Address, Subnet Mask, and Default Gateway are filled with '192.168.0.20', '255.255.255.0', and '192.168.0.1' respectively. Other sections include 'Camera Name' (CS-051503), 'Location', 'Admin' (Admin ID, Admin Password, Confirm Password), 'DNS IP Address' (1: 0.0.0.0, 2: 0.0.0.0), 'Dynamic DNS' (Yes/No, Service Provider, Host Name, User Name, Password), 'Wireless Interface' (Connection Mode: Infrastructure/Adhoc, Network Name, Wireless Channel: 11, WEP Key Encryption: Disable/64 bits/128 bits, WEP Key, Confirm WEP Key), 'LED Control' (Normal/OFF/Dummy), 'Loading ActiveX From', and 'Open Second Port' (Yes/No, 1: Web Server - Default 80, 2: Transfer Image - Default 8481). At the bottom, there are 'Save' and 'Cancel' buttons.

TV-IP100W F.A.Q.

Q: How do I configure the camera to record motion?

A: Step 1. Start the IPView Pro Program by going to **Start>Programs>IPView Pro>IPView Pro**.

Step 2. Click on “**System Configuration**”.



SYSTEM CONFIGURATION

Step 3. Motion Configuration-1

This setting provides the commands for motion detection control. Before configuring, you should select one camera from the pull-down menu.

Step 4. Detect Region field:

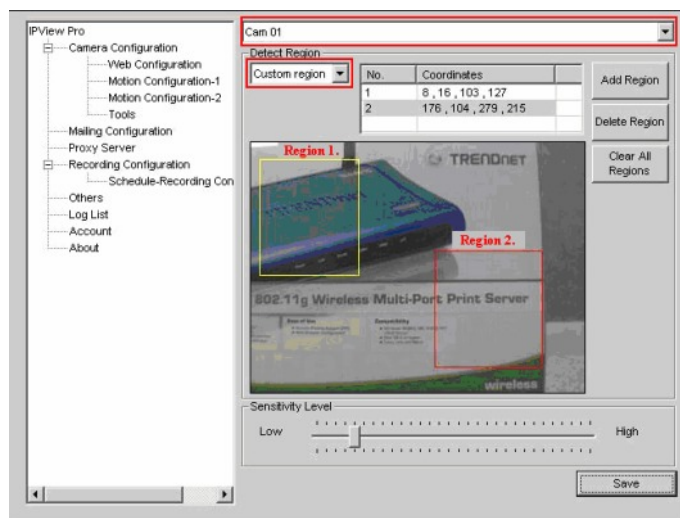
- Full picture – When you select this option, the camera will monitor the whole area.
- Custom region – Click Add Region and then use your mouse to draw an area in the view screen. When motion is detected within the area, the camera starts recording automatically. You can set multiple areas in the view screen. Click Delete Region to remove the area selected. Click Clear All Regions to remove all areas in the view screen.

Step 5. Sensitivity Level: Move the slide bar to adjust the sensitivity level for detecting motion to record video.

Note: The Sensitivity rating determines the amount of motion in the created window(s) to activate motion. Setting it too high or too low may produce unexpected results. .

TV-IP100W F.A.Q.

Step 6. Click “Save”.

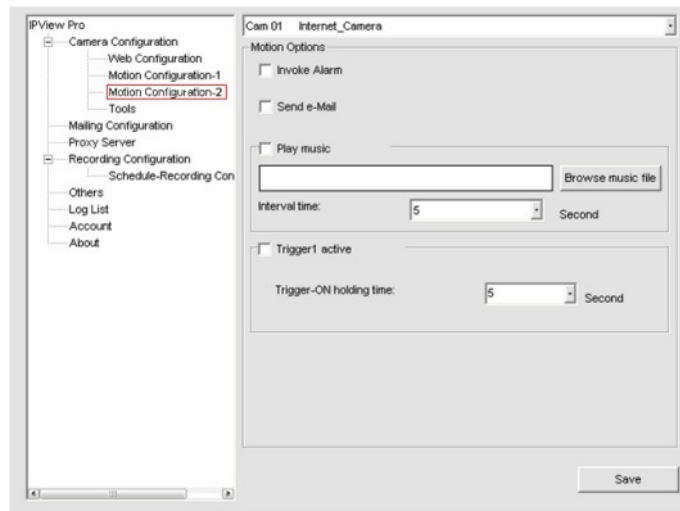


Motion Configuration-2

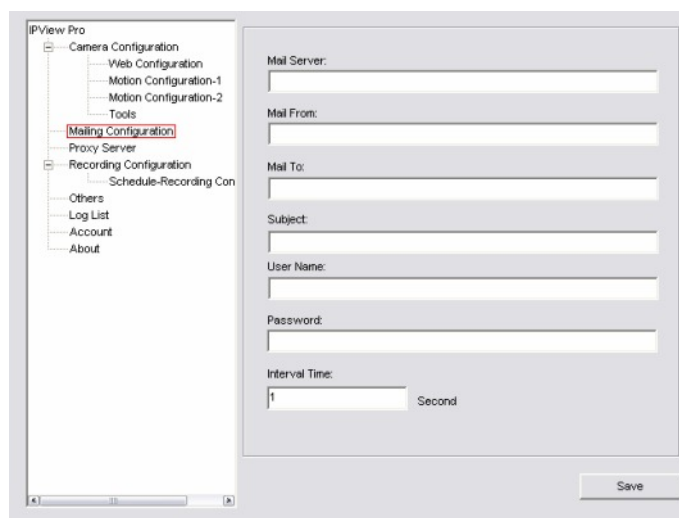
The Motion Configuration-2 setting allows you to configure the alarm and e-mail settings.

- Invoke Alarm: Select this option to enable an alarm when motion is detected by the system.

Note: Invoke Alarm requires that you have a trigger installed on the camera.



TV-IP100W F.A.Q.



Mail Server: Mail Server IP or Name.

Mail From: E-Mail Address of sender.

Mail To: E-Mail Address of receiver.

Subject: Can be any information to high light the message.

User Name: Enter the user name in this field.

Password: Enter the user password in this field to login receiver's mail server.

Interval Time: The time interval to send the next E-Mail.

Then click “**Save**”.

Q: How do I upgrade the firmware of my camera?

A: Step 1. Start the IPView Pro Program by going to **Start>Programs>IPView Pro>IPView Pro**.

Step 2. Click on “**System Administration**”.

Step 3. Click “**System**” then “**Tools**”.

Step 5. Click “**Update**”.

TV-IP100W F.A.Q.

“Warning”: DO NOT upgrade firmware on any TRENDnet product using wireless connection.

Firmware upgrade over wireless connection may damage the product. Please perform firmware upgrade with "wired" network connection only.



SYSTEM CONFIGURATION

Q: Can my TV-IP100 (A1/B2) series camera use Power over Ethernet?

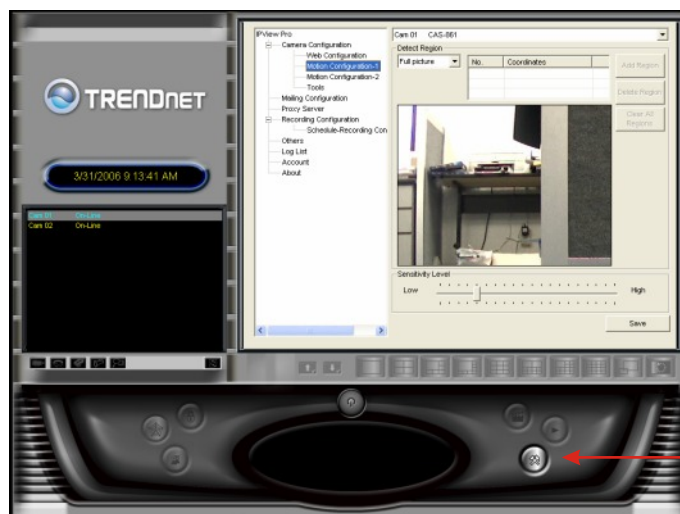
A: No. However, with the use of a TRENDnet TPE-102S you could power the unit via PoE.

Note: You must have a PoE injector for the TPE-102S. You could use either an existing PoE switch or a TPE-1011.

Q: How do I configure the camera to record motion?

A: Motion Configuration-1

Step 1. Click on the “System Configuration”.



SYSTEM CONFIGURATION

TV-IP100W F.A.Q.

Step 2. Motion Configuration-1

This setting provides the commands for motion detection control. Before configuring, you should select one camera from the pull-down menu.

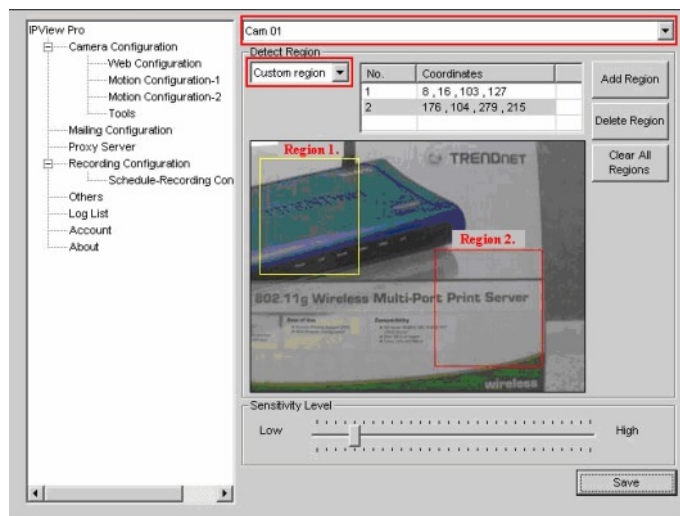
Step 3. Detect Region field:

- Full picture – When you select this option, the camera will monitor the whole area.
- Custom region – Click Add Region and then use your mouse to draw an area in the view screen. When motion is detected within the area, the camera starts recording automatically. You can set multiple areas in the view screen. Click Delete Region to remove the area selected. Click Clear All Regions to remove all areas in the view screen.

Step 4. Sensitivity Level: Move the slide bar to adjust the sensitivity level for detecting motion to record video.

Note: The Sensitivity rating determines the amount of motion in the created window(s) to activate motion. Setting it too high or too low may produce unexpected results. .

Step 5. Click on “Save”.



TV-IP100W F.A.Q.

Motion Configuration-2

The Motion Configuration-2 setting allows you to configure the alarm and e-mail settings.

- Invoke Alarm: Select this option to enable an alarm when motion is detected by the system.

Note: Invoke Alarm requires that you have a trigger installed on the camera.

IPView Pro

Camera Configuration

- Web Configuration
- Motion Configuration-1
- Motion Configuration-2**
- Tools

Mailing Configuration

Proxy Server

Recording Configuration

- Schedule-Recording Con

Others

- Log List
- Account
- About

Cam 01 Internet_Camera

Motion Options

Invoke Alarm

Send e-Mail

Play music

Interval time: 5 Second

Trigger 1 active

Trigger-ON holding time: 5 Second

Save

IPView Pro

Camera Configuration

- Web Configuration
- Motion Configuration-1
- Motion Configuration-2
- Tools

Mailing Configuration

Proxy Server

Recording Configuration

- Schedule-Recording Con

Others

- Log List
- Account
- About

Mail Server:

Mail From:

Mail To:

Subject:

User Name:

Password:

Interval Time: 1 Second

Save

Mail Server: Mail Server IP or Name.

Mail From: E-Mail Address of sender.

Mail To: E-Mail Address of receiver.

Subject: Can be any information to high light the message.

User Name: Enter the user name in this field.

Password: Enter the user password in this field to login receiver's mail server.

Interval Time: The time interval to send the next E-Mail.

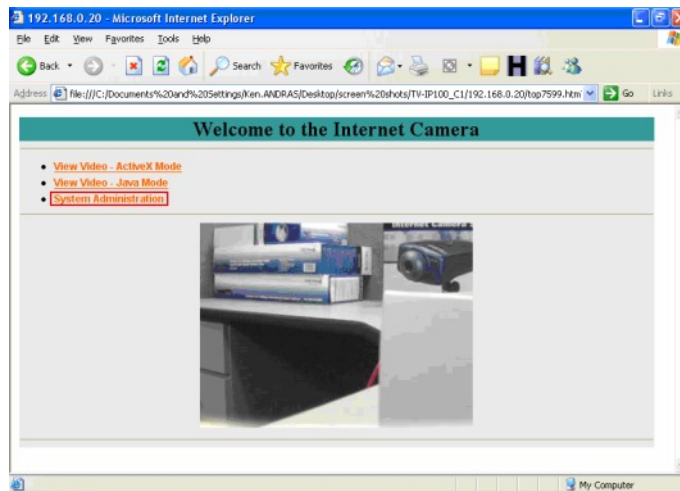
Then click **“Save”**.

TV-IP100W F.A.Q.

Q: How do I configure my TV-IP100 (A1/B2) series cameras to upload snapshots to an FTP server?

A: Step 1. Open your web browser and type the IP address of the TV-IP100 (A1/B2) in the address bar. The default IP address is 192.168.0.20.

Step 2. Click on **“System Administration”**.



Step 3. Click on the **“Upload”** at the top of the page. Fill in the FTP section and then click **“Save”**.

System Image Users Date/Time **Upload** E-mail Information Tools Home

Upload

FTP Server

Host Address : example.com

Port Number : 21 (Default is 21)

User Name : farris bueller

Password :

Directory Path : /test

Passive Mode : Yes No

Upload image to FTP server

Always

Schedule

Day : Mon Tue Wed Thu Fri Sat Sun

Time Period : Start : 0:00 (hh:mm:ss)

Stop : 0:00 (hh:mm:ss)

Image Frequency : 1 Frames/Second

1 Seconds/Frame

Base File Name : _____

File : Overwrite

Date/Time Suffix

Sequence Number Suffix Up to: 1024

Upload image to FTP server

Base File Name : _____

File : Overwrite

Date/Time Suffix

Sequence Number Suffix Up to: 1024

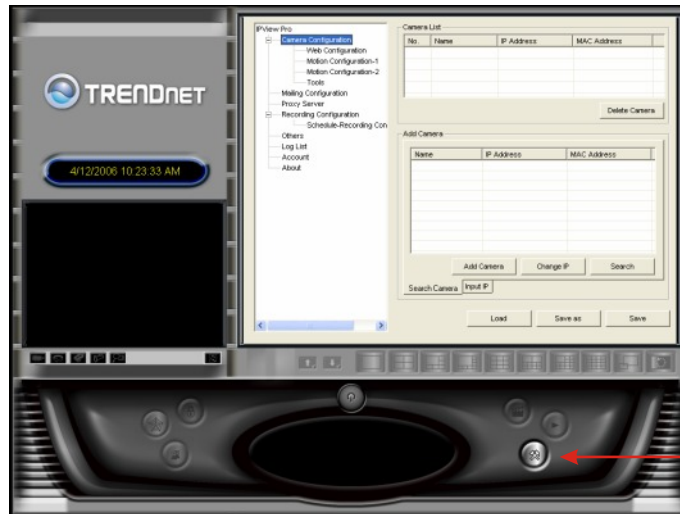
Save **Cancel**

TV-IP100W F.A.Q.

Q: How do I view the TV-IP100 (A1/B2) image using IPView Pro?

A: Step 1. Start the IPView Pro Program by going to **Start>Programs>IPView Pro>IPView Pro**.

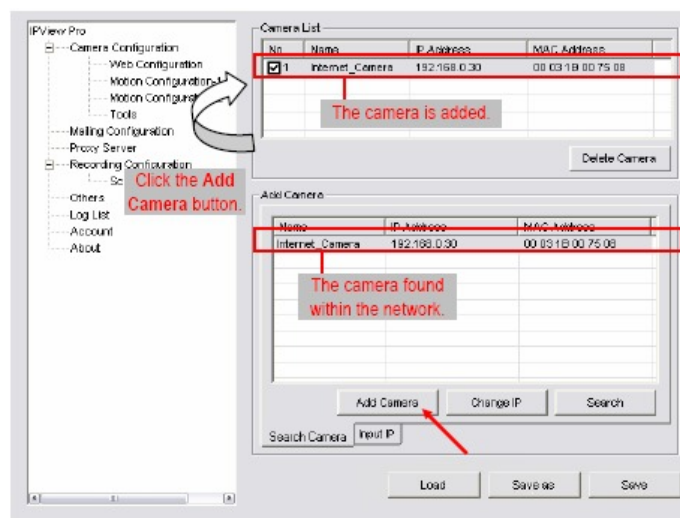
Step 2. Click on the **“System Configuration”** button to enter the System Configuration.



SYSTEM CONFIGURATION

If you are not sure of the camera's IP address, you can click **“Search”** to search the available camera(s) within the network.

Step 3. Select the camera you want by highlighting it, and then click **“Add Camera”**.



Q: Which web browsers will allow me to view the video from a TV-IP100 (A1/B2)?

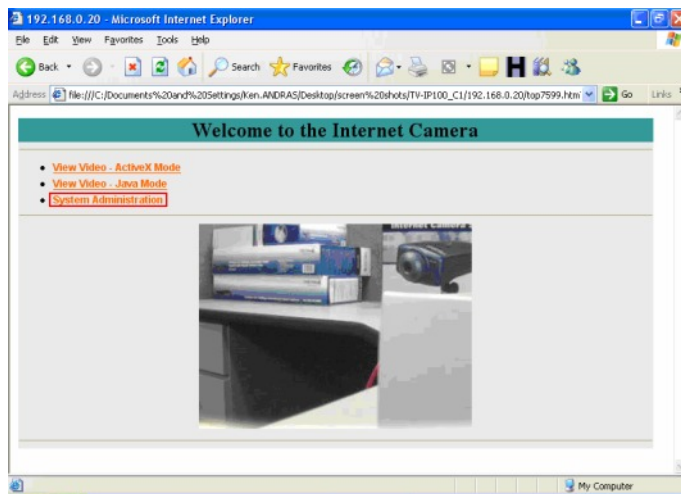
A: Internet Explorer 5.0 and above.

TV-IP100W F.A.Q.

Q: How do I add user accounts to my TV-IP100 (A1/B2)?

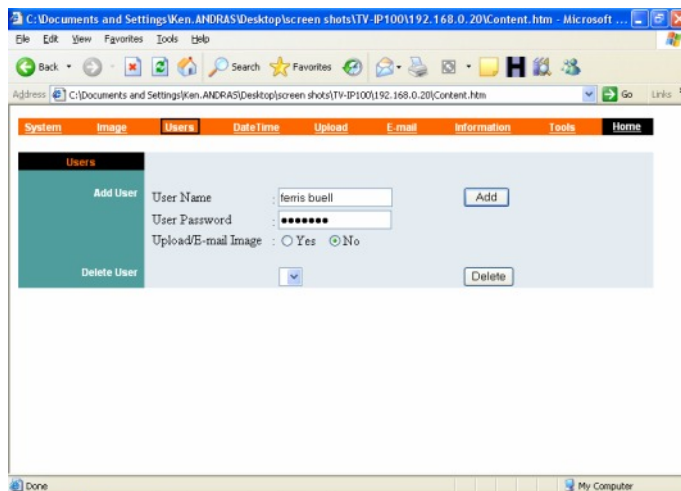
A: Step 1. Open your web browser and type the IP address of the TV-IP100 (A1/B2) in the address bar. The default IP address is 192.168.0.20.

Step 2. Click on “**System Administration**”.



Step 3. Click on the “**Users**” link at the top of the page

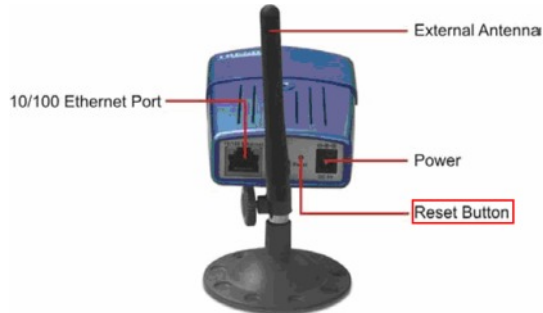
Step 4. Enter the desired username and password in the corresponding fields and click “**Add**”.



TV-IP100W F.A.Q.

Q: How do I reset my TV-IP100 (A1/B2) back to factory defaults?

A: Step 1. Locate the reset button on the back of the unit.



Step 2. Disconnect the power supply.

Step 3. Press and hold in the reset button.

Step 4. While holding in the reset button; reconnect the power supply.

Step 5. Continue to hold in the reset button for approximately 10 seconds to restore the default settings.

Q: What do the LED's on the front of the camera mean?

A: LED 1 Power LED

The Power LED is positioned on the right side of the Internet Camera's lens while facing the Internet Camera. A steady **BLUE** light confirms that the Internet Camera is powered on.

LED 2 Link LED

The Link LED is positioned on the right side of the Internet Camera's lens while facing the Internet Camera. It is located right of the Power LED. A steady **ORANGE** light confirms that the camera has good connection to LAN connectivity. Depending on the data traffic the Link LED will begin to flash to indicate that the Internet Camera is receiving/sending data from/to the network.

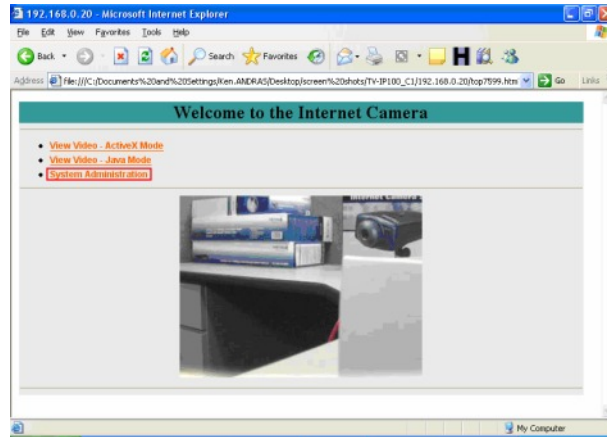


TV-IP100W F.A.Q.

Q: How do I set a password on my TV-IP100 (A1 / B2)?

A: Step 1. Open your web browser and type the IP address of the TV-IP100 (A1/B2) in the address bar. The default IP address is 192.168.0.20.

Step 2. Click on “**System Administration**”.



Step 3. Click on “**System**” link on the top of the screen.

Step 4. Enter a password into the **Admin ID:** Field, Enter a password in the **Admin password** field then retype it to confirm it. Click “**Save**”.

System | Image | Users | Date Time | Trigger | Upload | Information | Tools | Home

System

Camera Name: CS-00BEB3

Location: _____

Admin

Admin ID: Fred Durfel

Admin Password: ●●●●●●

Confirm Password: ●●●●●●

IP Assigned

Manually Assign

IP Address: 192.168.0.20

Subnet Mask: 255.255.255.0

Default Gateway: 192.168.0.1

Assign Automatically Using

RARP

BOOTP

DHCP

PPPoE

Service Name: _____

User ID: _____

Password: _____

DNS IP Address

1: 0.0.0.0

2: 0.0.0.0

Wireless Interface

Connection Mode: Infrastructure 802.11 Adhoc Adhoc

Network Name: test (ESS-ID)

Wireless Channel: 11

Encryption WEP Key: ●●●●●● ASCII HEX

Confirm WEP Key: ●●●●●●

LED Control

Normal OFF Dummy

Loading ActiveX From

Open Second Port

Yes No

1: Web Server - Default 80

81

2: Transfer Image - Default 8481

8482

Save Cancel