



Руководство по быстрой установк 

**TU3-H2EC**  
1.01

# Table of Contents

Русский	1
1. Подготовка к монтажу	1
2. Порядок установки	2
Technical Specifications	6
Troubleshooting	7



## Содержимое упаковки

- TU3-H2EC
- CD-ROM-диск с драйвером
- Руководство по быстрой установке на нескольких языках
- AC Адаптер источника питания
- (5V DC, 2.5A)(необязательно)

## Системные требования

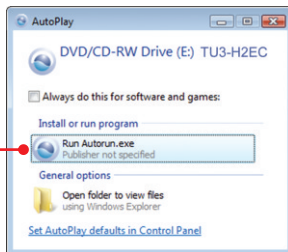
- Плата Express/34 гнез. или плата Express/54 гнез.
- Дисковод CD-ROM
- USB 3.0 кабель
- ЦП: 1GHz или выше (Windows 7) / 800MHz или выше (Windows Vista) / 300Mhz или выше (Windows XP)
- Память: 1GHz RAM или более (Windows 7) / 512MB RAM или более (Windows Vista) / 256MB RAM или более (Windows XP)
- Windows 7(32/64-bit) / Vista(32/64-bit) / XP(32/64-bit)

## 2. Порядок установки

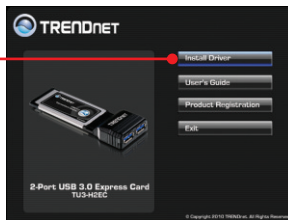
**Это важно!** НЕ устанавливайте устройство TU3-H2EC до того, как получите на то указание.

1. Установите CD-ROM-диск со служебной программой и драйвером в дисковод CD-ROM компьютера.

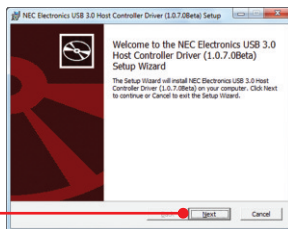
2. Нажмите **Run Autorun.exe** (только для Windows 7/Vista).



3. Выберите **Install Driver**.



4. Щелкните по кнопке **Далее (Next)**. Затем следуйте инструкциям мастера установки.



5. Нажмите **"Установить"**.



ENGLISH

Français

DEUTSCH

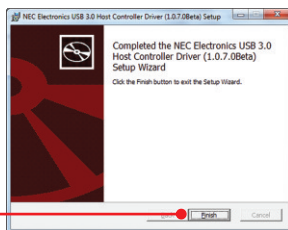
ESPAÑOL

РУССКИЙ

6. Щелкните по кнопке **Все равно родолжить** (Continue Anyway). (Windows XP).



7. Щелкните по кнопке **Завершить**.



**Примечание:** Ознакомьтесь с порядком установки оборудования в руководстве пользователя своего компьютера.

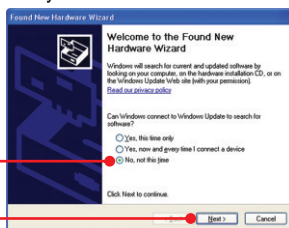
8. Отключите компьютер.

9. Плотно вставьте карту Express в свободный слот, а затем включите компьютер и дождитесь появления Рабочего стола Windows.

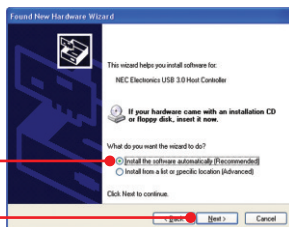


**Внимание:** в Windows 7/Vista драйверы будут установлены автоматически. Переходите к шагу 15. Для Windows XP перейдите к шагу 10.

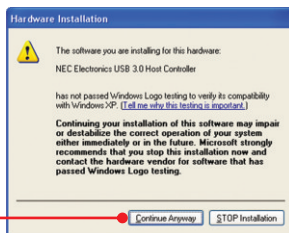
10. Появится Мастер установки нового оборудования. Выберите Нет и щелкните по кнопке **Далее (Next)**.



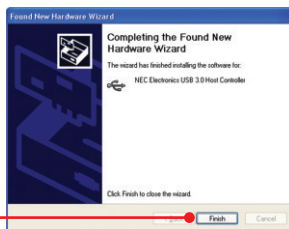
11. Выберите **Установить программное обеспечение автоматически (Install the software automatically)** и щелкните по кнопке **Далее (Next)**.



12. Щелкните по кнопке **Все равно продолжить (Continue Anyway)**.



13. Щелкните по кнопке **Завершить**.



14. Повторите шаги 10-13 для завершения установки TU3-H2EC.

15. Подключите USB-устройство к одному из USB-портов TU3-H2EC.



### Настройка конфигурации завершена

Подробную информацию о конфигурации устройства TU3-H2EC и его дополнительных настройках можно получить в разделе Устранение неисправностей из руководства пользователя на компакт-диске или на веб-сайте TRENDnet по адресу <http://www.trendnet.com>.

### Зарегистрируйте свой продукт

Для того, чтобы воспользоваться сервисным обслуживанием и поддержкой на высшем уровне, предлагаем вам зарегистрировать свой продукт в режиме онлайн здесь: [www.trendnet.com/register](http://www.trendnet.com/register) Благодарим Вас за то, что Вы выбрали TRENDnet.

Hardware	
Interface	USB 3.0 ExpressCard 1.0
Port	2 x USB 3.0 Port
Supported OS	Windows 7 (32/64-bit), Vista (32/64-bit), XP (32/64-bit)
Data Rates	Super-speed: 5Gbps High-speed: 480Mbps Full-speed: 12Mbps Low-speed: 1.5Mbps
Power Consumption	100mA (max) per port, BUS-power 900mA (max) per port, external power adapter
Power	5V DC, 2.5A external power adapter
Dimensions (L x W x D)	114 x 54 x 12mm (4.4 x 2.1 x 0.5 in.)
Weight	45g. (1.6oz.)
Temperature	5°C ~ 40°C (41°F ~ 104°F)
Humidity	90% (non-condensing)
Certification	CE, FCC



### **1. I inserted the Driver CD-ROM into my computer's CD-ROM Drive but the installation menu does not appear automatically. What should I do?**

1. For Windows 7, if the installation menu does not appear automatically, click on the Windows Icon on the bottom left hand corner of the screen, click the "Search programs and files" box, and type D:\autorun.exe, where "D" in "D:\autorun.exe" is the letter assigned to your CD-ROM Drive, and then press the ENTER key on your keyboard
2. For Windows Vista, if the installation menu does not appear automatically, click Start, click the Search box, and type D:\autorun.exe where "D" in "D:\autorun.exe" is the letter assigned to your CD-ROM Drive, and then press the ENTER key on your keyboard.
3. For Windows XP, if the window does not appear automatically, click Start, click Run and type D:\autorun.exe where "D" in "D:\autorun.exe" is the letter assigned to your CD-ROM Drive, and then press the ENTER key on your keyboard.

### **2. Can I connect or disconnect the USB cable while the computer is on?**

Yes, you can connect or disconnect the USB cable, or any external USB device while the computer is on because the USB interface is Plug-and-Play and hot-pluggable.

### **3. I have a USB 1.1/2.0 cable. Can it work with USB 3.0 devices?**

Yes, it works but it may cause problems for connecting super-speed USB 3.0 external peripherals. Therefore it is recommended that you use certified USB 3.0 cable.

### **4. After successful installation of the TU3-H2EC, connected my external USB device to the USB port, but it doesn't seem to work. What should I do?**

1. Verify that your external USB device works when you connect it directly to a USB port on your computer.
2. If you have an external AC power adapter that came with the external USB device, connect the AC power adapter to the device. Then power on the device.
3. Try connecting the external USB device to the other USB port on the TU3-H2EC.
4. Try using a different USB cable.
5. Try connecting the external power adapter to the TU3-H2EC.

If you still encounter problems or have any questions regarding the **TU3-H2EC**, please contact Trendnet's Technical Support Department.

TRENDnet warrants its products against defects in material and workmanship, under normal use and service, for the following lengths of time from the date of purchase.

### **TU3-H2EC – 2 Years Limited Warranty**

AC/DC Power Adapter, Cooling Fan, and Power Supply carry a 1 year warranty.

If a product does not operate as warranted during the applicable warranty period, TRENDnet shall reserve the right, at its expense, to repair or replace the defective product or part and deliver an equivalent product or part to the customer. The repair/replacement unit's warranty continues from the original date of purchase. All products that are replaced become the property of TRENDnet. Replacement products may be new or reconditioned. TRENDnet does not issue refunds or credit. Please contact the point-of-purchase for their return policies.

TRENDnet shall not be responsible for any software, firmware, information, or memory data of customer contained in, stored on, or integrated with any products returned to TRENDnet pursuant to any warranty.

There are no user serviceable parts inside the product. Do not remove or attempt to service the product by any unauthorized service center. This warranty is voided if (i) the product has been modified or repaired by any unauthorized service center, (ii) the product was subject to accident, abuse, or improper use (iii) the product was subject to conditions more severe than those specified in the manual.

Warranty service may be obtained by contacting TRENDnet within the applicable warranty period and providing a copy of the dated proof of the purchase. Upon proper submission of required documentation a Return Material Authorization (RMA) number will be issued. An RMA number is required in order to initiate warranty service support for all TRENDnet products. Products that are sent to TRENDnet for RMA service must have the RMA number marked on the outside of return packages and sent to TRENDnet prepaid, insured and packaged appropriately for safe shipment. Customers shipping from outside of the USA and Canada are responsible for return shipping fees. Customers shipping from outside of the USA are responsible for custom charges, including but not limited to, duty, tax, and other fees.

**WARRANTIES EXCLUSIVE:** IF THE TRENDNET PRODUCT DOES NOT OPERATE AS WARRANTED ABOVE, THE CUSTOMER'S SOLE REMEDY SHALL BE, AT TRENDNET'S OPTION, REPAIR OR REPLACE. THE FOREGOING WARRANTIES AND REMEDIES ARE EXCLUSIVE AND ARE IN LIEU OF ALL OTHER WARRANTIES, EXPRESSED OR IMPLIED, EITHER IN FACT OR BY OPERATION OF LAW, STATUTORY OR OTHERWISE, INCLUDING WARRANTIES OF MERCHANTABILITY AND FITNESS FOR A PARTICULAR PURPOSE. TRENDNET NEITHER ASSUMES NOR AUTHORIZES ANY OTHER PERSON TO ASSUME FOR IT ANY OTHER LIABILITY IN CONNECTION WITH THE SALE, INSTALLATION MAINTENANCE OR USE OF TRENDNET'S PRODUCTS.

TRENDNET SHALL NOT BE LIABLE UNDER THIS WARRANTY IF ITS TESTING AND EXAMINATION DISCLOSE THAT THE ALLEGED DEFECT IN THE PRODUCT DOES NOT EXIST OR WAS CAUSED BY CUSTOMER'S OR ANY THIRD PERSON'S MISUSE, NEGLIGENCE, IMPROPER INSTALLATION OR TESTING, UNAUTHORIZED ATTEMPTS TO REPAIR OR MODIFY, OR ANY OTHER CAUSE BEYOND THE RANGE OF THE INTENDED USE, OR BY ACCIDENT, FIRE, LIGHTNING, OR OTHER HAZARD.

LIMITATION OF LIABILITY: TO THE FULL EXTENT ALLOWED BY LAW TRENDNET ALSO EXCLUDES FOR ITSELF AND ITS SUPPLIERS ANY LIABILITY, WHETHER BASED IN CONTRACT OR TORT (INCLUDING NEGLIGENCE), FOR INCIDENTAL, CONSEQUENTIAL, INDIRECT, SPECIAL, OR PUNITIVE DAMAGES OF ANY KIND, OR FOR LOSS OF REVENUE OR PROFITS, LOSS OF BUSINESS, LOSS OF INFORMATION OR DATE, OR OTHER FINANCIAL LOSS ARISING OUT OF OR IN CONNECTION WITH THE SALE, INSTALLATION, MAINTENANCE, USE, PERFORMANCE, FAILURE, OR INTERRUPTION OF THE POSSIBILITY OF SUCH DAMAGES, AND LIMITS ITS LIABILITY TO REPAIR, REPLACEMENT, OR REFUND OF THE PURCHASE PRICE PAID, AT TRENDNET'S OPTION. THIS DISCLAIMER OF LIABILITY FOR DAMAGES WILL NOT BE AFFECTED IF ANY REMEDY PROVIDED HEREIN SHALL FAIL OF ITS ESSENTIAL PURPOSE.

**Governing Law:** This Limited Warranty shall be governed by the laws of the state of California.

Some TRENDnet products include software code written by third party developers. These codes are subject to the GNU General Public License ("GPL") or GNU Lesser General Public License ("LGPL").

Go to <http://www.trendnet.com/gpl> or <http://www.trendnet.com> Download section and look for the desired TRENDnet product to access to the GPL Code or LGPL Code. These codes are distributed WITHOUT WARRANTY and are subject to the copyrights of the developers. TRENDnet does not provide technical support for these codes. Please go to <http://www.gnu.org/licenses/gpl.txt> or <http://www.gnu.org/licenses/lgpl.txt> for specific terms of each license.

## Certifications

This equipment has been tested and found to comply with FCC and CE Rules.

Operation is subject to the following two conditions:

- (1) This device may not cause harmful interference.
- (2) This device must accept any interference received. Including interference that may cause undesired operation.



Waste electrical and electronic products must not be disposed of with household waste. Please recycle where facilities exist. Check with you Local Authority or Retailer for recycling advice.



**NOTE:** THE MANUFACTURER IS NOT RESPONSIBLE FOR ANY RADIO OR TV INTERFERENCE CAUSED BY UNAUTHORIZED MODIFICATIONS TO THIS EQUIPMENT. SUCH MODIFICATIONS COULD VOID THE USER'S AUTHORITY TO OPERATE THE EQUIPMENT.

### ADVERTENCIA

En todos nuestros equipos se mencionan claramente las características del adaptador de alimentación necesario para su funcionamiento. El uso de un adaptador distinto al mencionado puede producir daños físicos y/o daños al equipo conectado. El adaptador de alimentación debe operar con voltaje y frecuencia de la energía eléctrica domiciliar existente en el país o zona de instalación.



## Product Warranty Registration

Please take a moment to register your product online.  
Go to TRENDnet's website at <http://www.trendnet.com/register>